

LEGAL DESCRIPTIONS

PARCEL A:

ALL THAT PORTION OF LOT 54, "ANACORTES INDUSTRIAL PARK ADDITION", ACCORDING TO THE PLAT THEREOF RECORDED IN VOLUME 10 OF PLATS, PAGE 19, RECORDS OF SKAGIT COUNTY, WASHINGTON, DESCRIBED AS FOLLOWS:

COMMENCING AT THE SOUTHWEST CORNER OF SAID LOT 54; THENCE NORTH ALONG THE WEST LINE OF LOT 54 FOR 308 FEET TO THE TRUE POINT OF BEGINNING; THENCE CONTINUING NORTH ALONG THE WEST LINE OF LOT 54 FOR 227.2 FEET TO AN INTERSECTION WITH THE SOUTH LINE OF LOT 53 PROJECTED WESTERLY; THENCE EAST ALONG THE WESTERLY PROJECTION OF THE SOUTH LINE OF LOT 53 FOR 308.10 FEET; THENCE SOUTH 227.2 FEET TO A POINT THAT LIES SOUTH 89°59'40" EAST FROM THE TRUE POINT OF BEGINNING; THENCE NORTH 89°59'40" WEST 308.10 FEET TO THE POINT OF BEGINNING.

PARCEL B:

ALL THAT PORTION OF LOT 54, "ANACORTES INDUSTRIAL PARK ADDITION", ACCORDING TO THE PLAT THEREOF RECORDED IN VOLUME 10 OF PLATS, PAGE 19, DESCRIBED AS FOLLOWS:

COMMENCING AT THE SOUTHWEST CORNER OF SAID LOT 54; THENCE NORTH ALONG THE WEST LINE OF LOT 54 FOR 535.2 FEET TO AN INTERSECTION WITH THE SOUTH LINE OF LOT 53 PROJECTED WESTERLY; THENCE EAST ALONG THE WESTERLY PROJECTION OF THE SOUTH LINE OF LOT 53, 308.10 FEET TO THE TRUE POINT OF BEGINNING; THENCE CONTINUE EAST ALONG THE SOUTH LINE OF LOT 53 TO THE SOUTHWEST CORNER OF SAID LOT; THENCE EAST ALONG THE SOUTH LINE OF LOT 51 FOR 89.15 FEET TO THE INTERSECTION WITH THE WESTERLY LINE OF THE BURLINGTON NORTHERN RAILWAY; THENCE SOUTH 23°55'10" EAST ALONG THE WESTERLY LINE OF SAID RAILROAD TO THE INTERSECTION WITH THE NORTHEASTERLY PROJECTION OF THE WEST LINE OF LOT 18, BLOCK 28, "BEALE'S MAPLE GROVE ADDITION", ACCORDING TO THE PLAT RECORDED IN VOLUME 2 OF PLATS, PAGE 19; THENCE SOUTH ALONG SAID NORTHERLY PROJECTION TO A POINT WHICH IS 308 FEET NORTH OF THE SOUTH LINE OF LOT 54 SAID POINT BEING THE NORTHEAST CORNER OF A PARCEL OF LAND REFERRED TO AS "PARCEL B" IN A QUIT CLAIM DEED RECORDED UNDER AUDITOR'S FILE NO. 9303150061, RECORDS OF SKAGIT COUNTY, WASHINGTON, CONVEYED TO GOJKO AND NADA MIMICA; THENCE WEST ALONG THE NORTH LINE OF SAID MIMICA PROPERTY TO A POINT WHICH IS 308.10 FEET EAST OF THE WEST LINE OF LOT 54, SAID POINT BEING THE SOUTHWEST CORNER OF THAT TRACT OF LAND CONVEYED TO THE CITY OF ANACORTES UNDER AUDITOR'S FILE NO. 8905180037, RECORDS OF SKAGIT COUNTY, WASHINGTON; THENCE NORTH ALONG THE EAST LINE OF SAID CITY PROPERTY TO THE TRUE POINT OF BEGINNING.

PARCEL C:

THAT PORTION OF LOT 54, "ANACORTES INDUSTRIAL PARK ADDITION", ACCORDING TO THE PLAT THEREOF RECORDED IN VOLUME 10 OF PLATS, PAGES 19, 20 AND 21, RECORDS OF SKAGIT COUNTY, WASHINGTON, LYING WESTERLY OF THE BURLINGTON NORTHERN RAILWAY, AND LYING EASTERLY OF THE WESTERLY LINE OF LOT 18, BLOCK 28, "BEALE'S MAPLE GROVE ADDITION", ACCORDING TO THE PLAT THEREOF RECORDED IN VOLUME 2 OF PLATS, PAGE 19, RECORDS OF SKAGIT COUNTY, WASHINGTON, EXTENDED NORTH PARALLEL TO THE WESTERLY LINE OF SAID LOT 54 TO AN INTERSECTION WITH THE WESTERLY LINE OF SAID RAILWAY:

EXCEPT THE FOLLOWING DESCRIBED PARCEL: ALL THAT PORTION OF LOT 54, "ANACORTES INDUSTRIAL PARK ADDITION", ACCORDING TO THE PLAT THEREOF RECORDED IN VOLUME 10 OF PLATS, PAGES 19 THROUGH 21, RECORDS OF SKAGIT COUNTY, WASHINGTON, DESCRIBED AS FOLLOWS: COMMENCING AT THE NORTHEAST CORNER OF PARCEL A OF SAID "ANACORTES INDUSTRIAL PARK ADDITION"; THENCE NORTH FOR 85 FEET TO THE TRUE POINT OF BEGINNING; THENCE CONTINUING NORTH ALONG THE EAST LINE OF THAT CERTAIN TRACT PREVIOUSLY CONVEYED TO VITOMIR RUZICH AND GOJKO MIMICA BY DEED RECORDED UNDER AUDITOR'S FILE NO. 8711300038, RECORDS OF SKAGIT COUNTY, WASHINGTON, FOR A DISTANCE OF 223 FEET TO THE NORTHEAST CORNER OF SAID TRACT; THENCE SOUTH 89°59'40" EAST FOR 75.34 FEET TO THE WESTERLY LINE OF THE BURLINGTON NORTHERN RAILROAD COMPANY RIGHT-OF-WAY; THENCE SOUTH 23°55'10" EAST ALONG THE WESTERLY LINE OF SAID RIGHT-OF-WAY 233.47 FEET; THENCE SOUTH ALONG THE EAST LINE OF LOT 54 FOR 109.58 FEET TO THE NORTH LINE OF 34TH STREET; THENCE WEST ALONG THE NORTH LINE OF 34TH STREET FOR 80 FEET; THENCE NORTH 100 FEET; THENCE WEST FOR 90 FEET TO THE POINT OF BEGINNING.

SOURCE OF LEGAL DESCRIPTIONS IS ISLAND TITLE COMPANY SUBDIVISION GUARANTEE, ORDER NO. SA-17682, DATED JULY 8, 1998.

TREASURER'S CERTIFICATE

THIS IS TO CERTIFY THAT ALL TAXES HERETOFORE LEVIED AND WHICH HAVE BECOME A LIEN UPON THE LANDS DESCRIBED ABOVE HAVE BEEN FULLY PAID AND DISCHARGED ACCORDING TO THE RECORDS OF MY OFFICE UP TO AND INCLUDING THE CURRENT YEAR OF 1999.

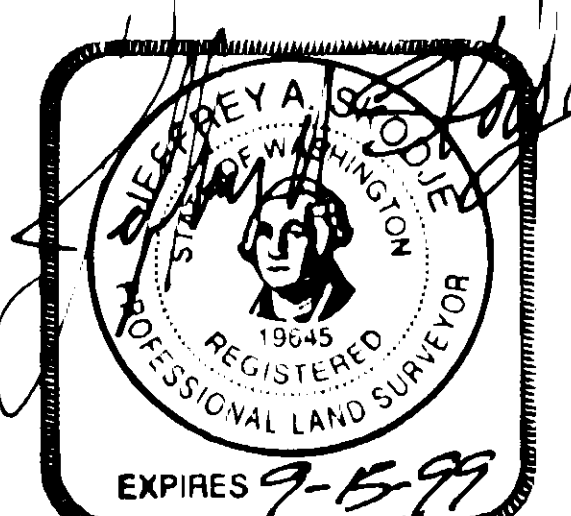
THIS 27th DAY OF January, 1999.

Judithann Menech SKAGIT COUNTY TREASURER

SURVEYOR'S CERTIFICATE

I HEREBY CERTIFY THAT THIS SHORT PLAT IS BASED ON AN ACTUAL SURVEY, WHICH IS RETRACEABLE AND BASED ON A TRUE SUBDIVISION OF THE SECTION, THAT THE DISTANCES, COURSES, AND ANGLES ARE SHOWN THEREON CORRECTLY, AND THAT MONUMENTS HAVE BEEN SET AND LOT CORNERS STAKED ON THE GROUND AS SHOWN ON THE SHORT PLAT, OR ARE SHOWN THEREON AS PER PREVIOUS SURVEYS AND/OR SHORT PLATS, IN ACCORDANCE WITH THE PROVISIONS CONTAINED IN CHAPTER 332-130 WAC.

Jeffrey A Skodje JEFFREY A SKODJE, P.L.S. CERTIFICATE NO. 19645 DATE 1/26/99



CONSENT AND DEDICATION

KNOW ALL PERSONS BY THESE PRESENTS THAT THE UNDERSIGNED SUBDIVIDERS HEREBY CERTIFY THAT THIS SHORT PLAT IS MADE AS THEIR FREE AND VOLUNTARY ACT AND DEED. WE FURTHER DECLARE THAT THE LAND DESCRIBED BY THIS SHORT PLAT HAS NOT BEEN PREVIOUSLY SHORT PLATTED WITHIN THE PREVIOUS FIVE YEARS, AND MAY NOT BE FURTHER SUBDIVIDED WITHIN FIVE YEARS FROM THE DATE OF APPROVAL OF THIS SHORT PLAT. WE FURTHER DEDICATE TO THE USE OF THE PUBLIC FOREVER, STREETS AND AVENUES SHOWN HEREON AND THE USE THEREOF FOR ALL PUBLIC PURPOSES CONSISTENT WITH THE USE THEREOF FOR PUBLIC HIGHWAY PURPOSES TOGETHER WITH THE RIGHT TO MAKE ALL NECESSARY SLOPES FOR CUTS AND FILLS UPON THE LOTS AND BLOCKS SHOWN HEREON IN THE ORIGINAL REASONABLE GRADING OF ALL SUCH STREETS AND AVENUES SHOWN HEREON.

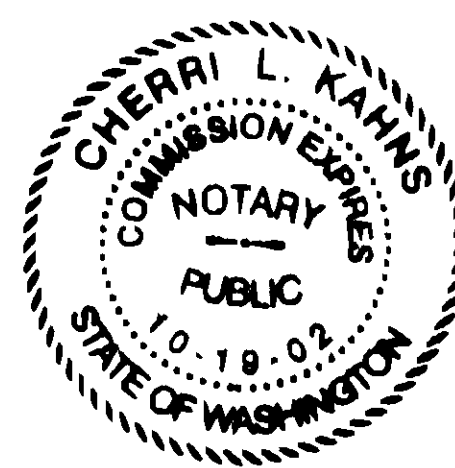
H. Dean Maxwell MAYOR, CITY OF ANACORTES

ACKNOWLEDGMENT

STATE OF WASHINGTON) COUNTY OF SKAGIT) 55

I CERTIFY THAT I KNOW OR HAVE SATISFACTORY EVIDENCE THAT DEAN MAXWELL IS THE PERSON WHO APPEARED BEFORE ME, AND ACKNOWLEDGED THAT HE SIGNED THIS INSTRUMENT, ON OATH STATED THAT HE WAS AUTHORIZED TO EXECUTE THE INSTRUMENT AND ACKNOWLEDGED IT AS THE MAYOR OF THE CITY OF ANACORTES TO BE THE FREE AND VOLUNTARY ACT OF SUCH PARTY FOR THE USES AND PURPOSES MENTIONED IN THE INSTRUMENT.

DATED: January 25, 1999 (Cheeri L. Kahns) Notary Public in and for the State of Washington My Appointment Expires 10-19-02



APPROVALS

THE WITHIN AND FOREGOING SHORT PLAT IS APPROVED IN ACCORDANCE WITH THE PROVISIONS OF THE CITY OF ANACORTES SHORT PLAT ORDINANCE. THIS 25 DAY OF JANUARY, 1999.

Ann L. Munce SUBDIVISION ADMINISTRATOR

City Engineer

TREASURER'S CERTIFICATE

I HEREBY CERTIFY THAT THERE ARE NO DELINQUENT SPECIAL ASSESSMENTS, AND THAT ALL SPECIAL ASSESSMENTS ON ANY OF THE PROPERTY HEREIN CONTAINED AND DEDICATED AS STREETS, ALLEYS OR FOR OTHER PUBLIC USE ARE PAID IN FULL.

THIS 25th DAY OF January, 1999.

Deputy Treasurer

NOTES

- 1. ZONING - COMMERCIAL
2. SEWAGE DISPOSAL - CITY OF ANACORTES
3. WATER - CITY OF ANACORTES
4. SHORT PLAT NUMBER AND DATE OF APPROVAL SHALL BE INCLUDED IN ALL DEEDS AND CONTRACTS
5. BASIS OF BEARING IS THE CENTERLINE OF T AVENUE BETWEEN FOUND MONUMENTS AT INTERSECTIONS OF 34TH STREET AND 30TH STREET BEING NORTH, PER "ANACORTES INDUSTRIAL PARK ADDITION", ACCORDING TO THE MAP AS RECORDED IN VOLUME 10 OF PLATS, AT PAGES 19 THROUGH 21, RECORDS OF SKAGIT COUNTY, WASHINGTON.
6. THIS SURVEY WAS PERFORMED IN THE FIELD USING A LIETZ SET 4A TOTAL STATION.
7. DEVELOPER - CITY OF ANACORTES
8. SKAGIT COUNTY ASSESSOR'S PARCEL NUMBERS: P78022, P78016, P78017.

AUDITOR'S CERTIFICATE

FILED FOR RECORD THIS 28 DAY OF Jan, 1999, AT 3:06 O'CLOCK P. M., IN BOOK 14 OF SHORT PLATS AT PAGE 1+2 AT THE REQUEST OF LEONARD, BOUDINOT AND SKODJE, INC. UNDER AUDITOR'S FILE NO. 9901280102

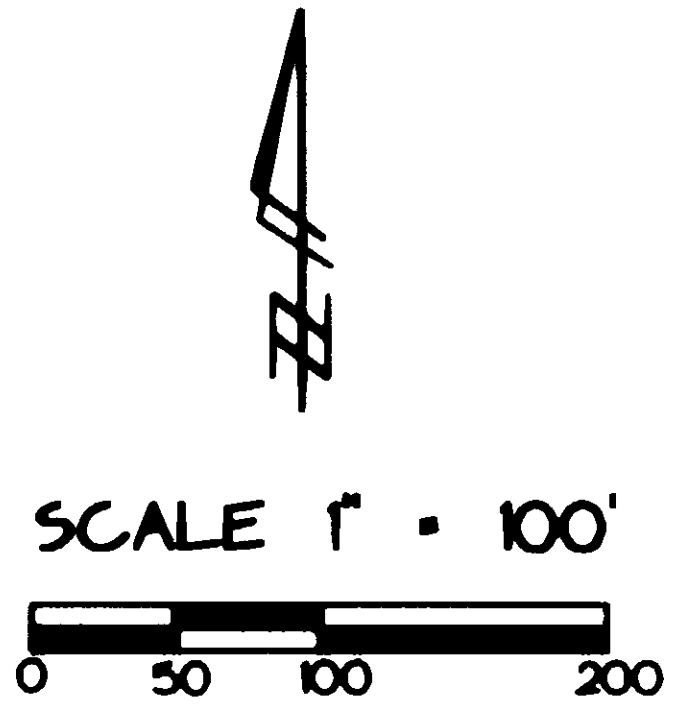
Katryn Hill SKAGIT COUNTY AUDITOR

Deputy

SHEET 1 OF 2

Table with 2 columns: SHORT PLAT NUMBER: ANA 98-008, DATE: DECEMBER 1998; CITY OF ANACORTES; PORTION OF LOT 54, "ANACORTES INDUSTRIAL PARK" LOCATED IN THE NORTH 1/2, SECTION 30, T 35, N, R. 2 E., WM CITY OF ANACORTES; FIELD BOOK 576 PG. 58, LEONARD, BOUDINOT and SKODJE, INC., SCALE: 1" = 100'; DATE: NOV 98, P.O. BOX 1228 MOUNT VERNON, WA 98273 (360) 536-5751, JOB NO. 98079

N 1/2, SECTION 30, T 35 N, R 2 E., W.M.



CURVE DELTA	RADIUS	TANGENT	LENGTH
00° 00' 06"	480.00'	0.01'	0.02'
03° 35' 00"	480.00'	15.01'	30.02'
25° 24' 30"	400.00'	90.18'	177.36'
22° 49' 40"	480.00'	96.91'	191.24'
37° 35' 36"	440.00'	149.76'	266.70'
37° 35' 36"	440.00'	149.76'	266.70'

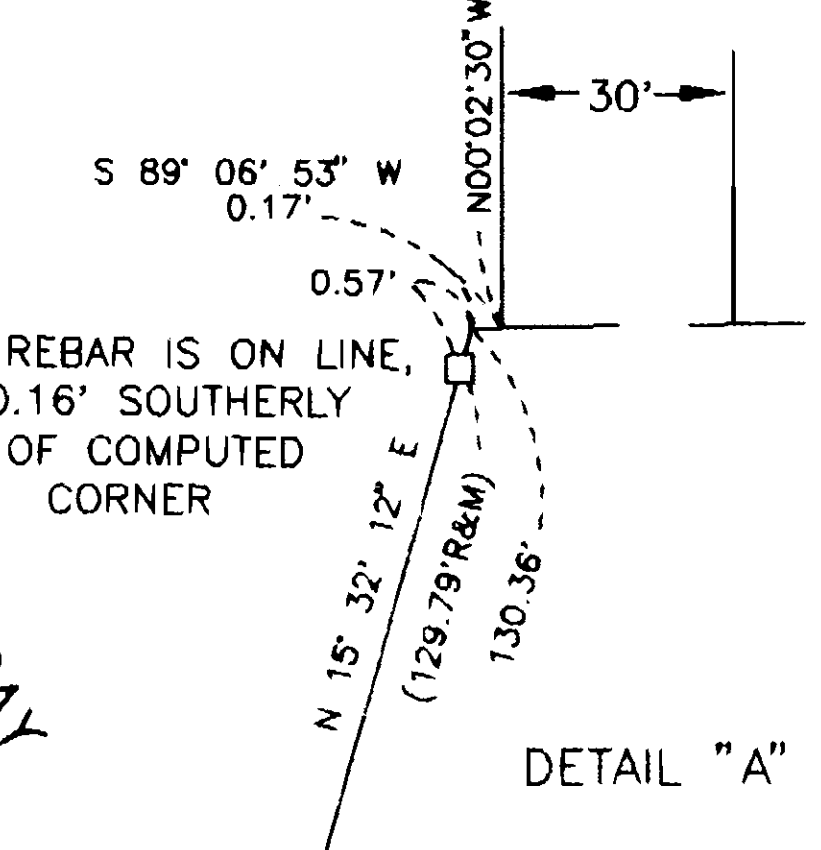
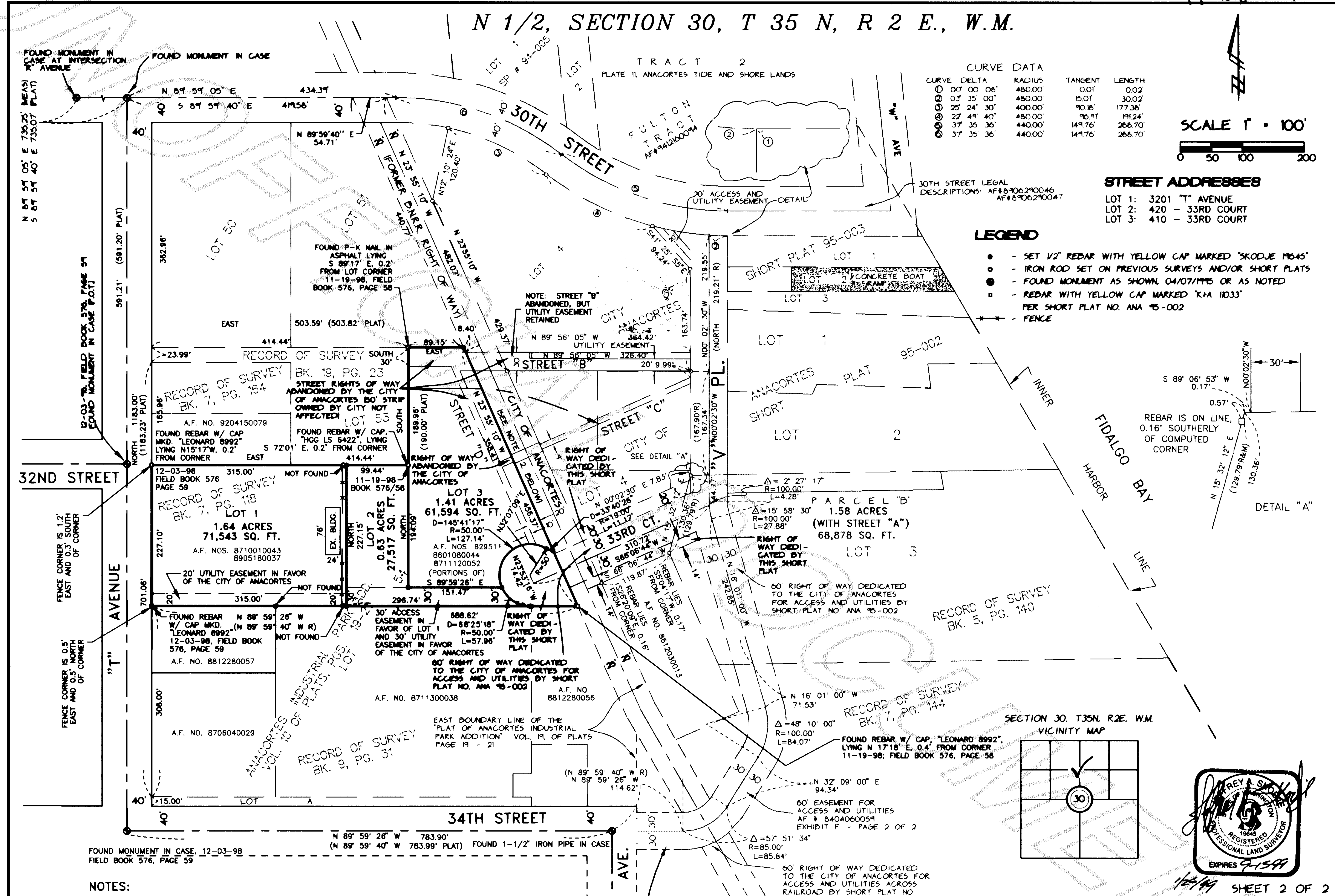
30TH STREET LEGAL DESCRIPTIONS: AF# 8906290046 AF# 8906290047

STREET ADDRESSES

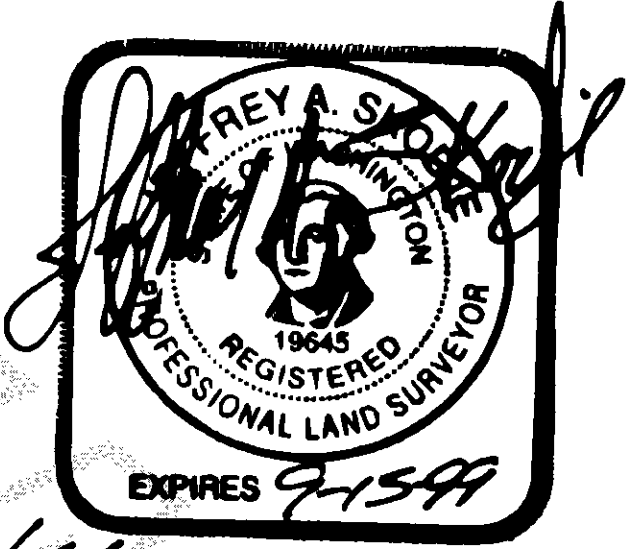
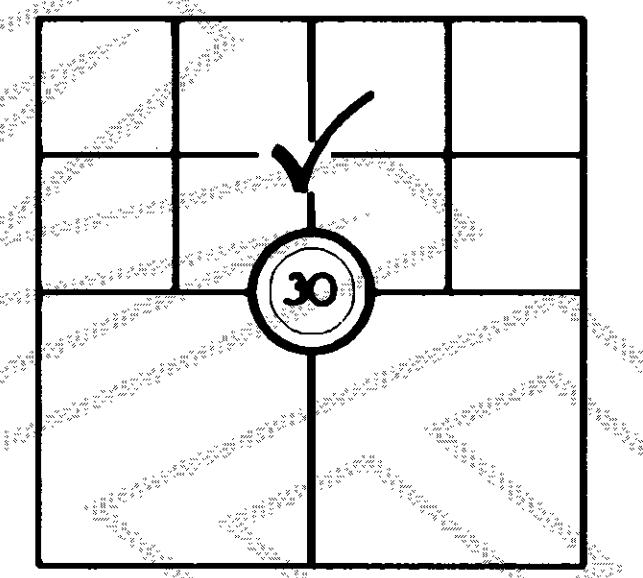
- LOT 1: 3201 "T" AVENUE
- LOT 2: 420 - 33RD COURT
- LOT 3: 410 - 33RD COURT

LEGEND

- - SET 1/2" REDBAR WITH YELLOW CAP MARKED "SKODJE 19645"
- - IRON ROD SET ON PREVIOUS SURVEYS AND/OR SHORT PLATS
- - FOUND MONUMENT AS SHOWN 04/07/1995 OR AS NOTED
- - REDBAR WITH YELLOW CAP MARKED "K+A 1033"
- - - FENCE



SECTION 30, T35N, R2E, W.M. VICINITY MAP



NOTES:

- 33RD CT. (COURT) AS SHOWN HEREON IS A REPLAT OF STREET "A" AS SHOWN ON SHORT PLAT NO. ANA 95-002.
- PURSUANT TO CITY OF ANACORTES CITY COUNCIL RESOLUTION NO. 1467, THE CITY COUNCIL HAS RESOLVED THAT CITY ORDINANCE NO. 2114 WILL BE REWRITTEN OR AMENDED TO EXTEND THE EXISTING FRANCHISE HELD BY ANACORTES RAILWAY, TO CONTINUE SOUTH FROM 9TH STREET, ALONG THE RECENTLY ACQUIRED FORMER BN ROW, TO THE VICINITY OF THE TRESTLE AT WEAVERLING SPIT, WITH THE UNDERSTANDING THAT SOME REALIGNMENT OF THE ROUTE MAY BE NECESSARY TO ACCOMMODATE STREETS, SIDEWALKS, TRAILS AND OTHER DEVELOPMENT AS PER COUNCIL RAILROAD CORRIDOR GUIDELINES 2/3/98. STAGES OF DEVELOPMENT WILL BE OUTLINED IN THAT FRANCHISE (E.G. 9TH TO 11TH; 11TH TO 22ND, ETC.) AS WELL AS AREAS WHERE ALIGNMENT MAY BE TEMPORARY OR SUBJECT TO FURTHER STIPULATIONS. ANACORTES RAILWAY WILL PAY THE COSTS OF RE-GAUGING THE CITY'S TRACK, WILL RE-PAVE ROAD CROSSINGS, AND WILL PROVIDE SWITCHES AND A TURNABLE AT END-OF-LINE (THOMPSON 8/28/97). IT IS UNDERSTOOD THAT REALIGNMENTS WILL GENERALLY BE AT THE COST OF PROPERTY OWNERS REQUESTING CHANGE. ROW AND TRACKS WILL REMAIN IN CITY OWNERSHIP.

SHORT PLAT NUMBER: ANA 95-008 DATE: DECEMBER 1998

CITY OF ANACORTES PORTION OF LOT 54, "ANACORTES INDUSTRIAL PARK" LOCATED IN THE NORTH 1/2, SECTION 30, T 35 N, R 2 E., W.M. CITY OF ANACORTES

FIELD BOOK 576 PG. 58 LEONARD, BOUDINOT and SKODJE, INC. SCALE: 1" = 100' DATE OF PRH DATE NOV/98 P.A. DATE 12/28/98 REGISTERED PROFESSIONAL LAND SURVEYORS (OR) 00073 (OR) 00074 (OR) 00075 (OR) 00076 (OR) 00077 (OR) 00078 (OR) 00079 (OR) 00080 (OR) 00081 (OR) 00082 (OR) 00083 (OR) 00084 (OR) 00085 (OR) 00086 (OR) 00087 (OR) 00088 (OR) 00089 (OR) 00090 (OR) 00091 (OR) 00092 (OR) 00093 (OR) 00094 (OR) 00095 (OR) 00096 (OR) 00097 (OR) 00098 (OR) 00099 (OR) 00100 (OR) 00101 (OR) 00102 (OR) 00103 (OR) 00104 (OR) 00105 (OR) 00106 (OR) 00107 (OR) 00108 (OR) 00109 (OR) 00110 (OR) 00111 (OR) 00112 (OR) 00113 (OR) 00114 (OR) 00115 (OR) 00116 (OR) 00117 (OR) 00118 (OR) 00119 (OR) 00120 (OR) 00121 (OR) 00122 (OR) 00123 (OR) 00124 (OR) 00125 (OR) 00126 (OR) 00127 (OR) 00128 (OR) 00129 (OR) 00130 (OR) 00131 (OR) 00132 (OR) 00133 (OR) 00134 (OR) 00135 (OR) 00136 (OR) 00137 (OR) 00138 (OR) 00139 (OR) 00140 (OR) 00141 (OR) 00142 (OR) 00143 (OR) 00144 (OR) 00145 (OR) 00146 (OR) 00147 (OR) 00148 (OR) 00149 (OR) 00150 (OR) 00151 (OR) 00152 (OR) 00153 (OR) 00154 (OR) 00155 (OR) 00156 (OR) 00157 (OR) 00158 (OR) 00159 (OR) 00160 (OR) 00161 (OR) 00162 (OR) 00163 (OR) 00164 (OR) 00165 (OR) 00166 (OR) 00167 (OR) 00168 (OR) 00169 (OR) 00170 (OR) 00171 (OR) 00172 (OR) 00173 (OR) 00174 (OR) 00175 (OR) 00176 (OR) 00177 (OR) 00178 (OR) 00179 (OR) 00180 (OR) 00181 (OR) 00182 (OR) 00183 (OR) 00184 (OR) 00185 (OR) 00186 (OR) 00187 (OR) 00188 (OR) 00189 (OR) 00190 (OR) 00191 (OR) 00192 (OR) 00193 (OR) 00194 (OR) 00195 (OR) 00196 (OR) 00197 (OR) 00198 (OR) 00199 (OR) 00200 (OR) 00201 (OR) 00202 (OR) 00203 (OR) 00204 (OR) 00205 (OR) 00206 (OR) 00207 (OR) 00208 (OR) 00209 (OR) 00210 (OR) 00211 (OR) 00212 (OR) 00213 (OR) 00214 (OR) 00215 (OR) 00216 (OR) 00217 (OR) 00218 (OR) 00219 (OR) 00220 (OR) 00221 (OR) 00222 (OR) 00223 (OR) 00224 (OR) 00225 (OR) 00226 (OR) 00227 (OR) 00228 (OR) 00229 (OR) 00230 (OR) 00231 (OR) 00232 (OR) 00233 (OR) 00234 (OR) 00235 (OR) 00236 (OR) 00237 (OR) 00238 (OR) 00239 (OR) 00240 (OR) 00241 (OR) 00242 (OR) 00243 (OR) 00244 (OR) 00245 (OR) 00246 (OR) 00247 (OR) 00248 (OR) 00249 (OR) 00250 (OR) 00251 (OR) 00252 (OR) 00253 (OR) 00254 (OR) 00255 (OR) 00256 (OR) 00257 (OR) 00258 (OR) 00259 (OR) 00260 (OR) 00261 (OR) 00262 (OR) 00263 (OR) 00264 (OR) 00265 (OR) 00266 (OR) 00267 (OR) 00268 (OR) 00269 (OR) 00270 (OR) 00271 (OR) 00272 (OR) 00273 (OR) 00274 (OR) 00275 (OR) 00276 (OR) 00277 (OR) 00278 (OR) 00279 (OR) 00280 (OR) 00281 (OR) 00282 (OR) 00283 (OR) 00284 (OR) 00285 (OR) 00286 (OR) 00287 (OR) 00288 (OR) 00289 (OR) 00290 (OR) 00291 (OR) 00292 (OR) 00293 (OR) 00294 (OR) 00295 (OR) 00296 (OR) 00297 (OR) 00298 (OR) 00299 (OR) 00300 (OR) 00301 (OR) 00302 (OR) 00303 (OR) 00304 (OR) 00305 (OR) 00306 (OR) 00307 (OR) 00308 (OR) 00309 (OR) 00310 (OR) 00311 (OR) 00312 (OR) 00313 (OR) 00314 (OR) 00315 (OR) 00316 (OR) 00317 (OR) 00318 (OR) 00319 (OR) 00320 (OR) 00321 (OR) 00322 (OR) 00323 (OR) 00324 (OR) 00325 (OR) 00326 (OR) 00327 (OR) 00328 (OR) 00329 (OR) 00330 (OR) 00331 (OR) 00332 (OR) 00333 (OR) 00334 (OR) 00335 (OR) 00336 (OR) 00337 (OR) 00338 (OR) 00339 (OR) 00340 (OR) 00341 (OR) 00342 (OR) 00343 (OR) 00344 (OR) 00345 (OR) 00346 (OR) 00347 (OR) 00348 (OR) 00349 (OR) 00350 (OR) 00351 (OR) 00352 (OR) 00353 (OR) 00354 (OR) 00355 (OR) 00356 (OR) 00357 (OR) 00358 (OR) 00359 (OR) 00360 (OR) 00361 (OR) 00362 (OR) 00363 (OR) 00364 (OR) 00365 (OR) 00366 (OR) 00367 (OR) 00368 (OR) 00369 (OR) 00370 (OR) 00371 (OR) 00372 (OR) 00373 (OR) 00374 (OR) 00375 (OR) 00376 (OR) 00377 (OR) 00378 (OR) 00379 (OR) 00380 (OR) 00381 (OR) 00382 (OR) 00383 (OR) 00384 (OR) 00385 (OR) 00386 (OR) 00387 (OR) 00388 (OR) 00389 (OR) 00390 (OR) 00391 (OR) 00392 (OR) 00393 (OR) 00394 (OR) 00395 (OR) 00396 (OR) 00397 (OR) 00398 (OR) 00399 (OR) 00400 (OR) 00401 (OR) 00402 (OR) 00403 (OR) 00404 (OR) 00405 (OR) 00406 (OR) 00407 (OR) 00408 (OR) 00409 (OR) 00410 (OR) 00411 (OR) 00412 (OR) 00413 (OR) 00414 (OR) 00415 (OR) 00416 (OR) 00417 (OR) 00418 (OR) 00419 (OR) 00420 (OR) 00421 (OR) 00422 (OR) 00423 (OR) 00424 (OR) 00425 (OR) 00426 (OR) 00427 (OR) 00428 (OR) 00429 (OR) 00430 (OR) 00431 (OR) 00432 (OR) 00433 (OR) 00434 (OR) 00435 (OR) 00436 (OR) 00437 (OR) 00438 (OR) 00439 (OR) 00440 (OR) 00441 (OR) 00442 (OR) 00443 (OR) 00444 (OR) 00445 (OR) 00446 (OR) 00447 (OR) 00448 (OR) 00449 (OR) 00450 (OR) 00451 (OR) 00452 (OR) 00453 (OR) 00454 (OR) 00455 (OR) 00456 (OR) 00457 (OR) 00458 (OR) 00459 (OR) 00460 (OR) 00461 (OR) 00462 (OR) 00463 (OR) 00464 (OR) 00465 (OR) 00466 (OR) 00467 (OR) 00468 (OR) 00469 (OR) 00470 (OR) 00471 (OR) 00472 (OR) 00473 (OR) 00474 (OR) 00475 (OR) 00476 (OR) 00477 (OR) 00478 (OR) 00479 (OR) 00480 (OR) 00481 (OR) 00482 (OR) 00483 (OR) 00484 (OR) 00485 (OR) 00486 (OR) 00487 (OR) 00488 (OR) 00489 (OR) 00490 (OR) 00491 (OR) 00492 (OR) 00493 (OR) 00494 (OR) 00495 (OR) 00496 (OR) 00497 (OR) 00498 (OR) 00499 (OR) 00500 (OR) 00501 (OR) 00502 (OR) 00503 (OR) 00504 (OR) 00505 (OR) 00506 (OR) 00507 (OR) 00508 (OR) 00509 (OR) 00510 (OR) 00511 (OR) 00512 (OR) 00513 (OR) 00514 (OR) 00515 (OR) 00516 (OR) 00517 (OR) 00518 (OR) 00519 (OR) 00520 (OR) 00521 (OR) 00522 (OR) 00523 (OR) 00524 (OR) 00525 (OR) 00526 (OR) 00527 (OR) 00528 (OR) 00529 (OR) 00530 (OR) 00531 (OR) 00532 (OR) 00533 (OR) 00534 (OR) 00535 (OR) 00536 (OR) 00537 (OR) 00538 (OR) 00539 (OR) 00540 (OR) 00541 (OR) 00542 (OR) 00543 (OR) 00544 (OR) 00545 (OR) 00546 (OR) 00547 (OR) 00548 (OR) 00549 (OR) 00550 (OR) 00551 (OR) 00552 (OR) 00553 (OR) 00554 (OR) 00555 (OR) 00556 (OR) 00557 (OR) 00558 (OR) 00559 (OR) 00560 (OR) 00561 (OR) 00562 (OR) 00563 (OR) 00564 (OR) 00565 (OR) 00566 (OR) 00567 (OR) 00568 (OR) 00569 (OR) 00570 (OR) 00571 (OR) 00572 (OR) 00573 (OR) 00574 (OR) 00575 (OR) 00576 (OR) 00577 (OR) 00578 (OR) 00579 (OR) 00580 (OR) 00581 (OR) 00582 (OR) 00583 (OR) 00584 (OR) 00585 (OR) 00586 (OR) 00587 (OR) 00588 (OR) 00589 (OR) 00590 (OR) 00591 (OR) 00592 (OR) 00593 (OR) 00594 (OR) 00595 (OR) 00596 (OR) 00597 (OR) 00598 (OR) 00599 (OR) 00600 (OR) 00601 (OR) 00602 (OR) 00603 (OR) 00604 (OR) 00605 (OR) 00606 (OR) 00607 (OR) 00608 (OR) 00609 (OR) 00610 (OR) 00611 (OR) 00612 (OR) 00613 (OR) 00614 (OR) 00615 (OR) 00616 (OR) 00617 (OR) 00618 (OR) 00619 (OR) 00620 (OR) 00621 (OR) 00622 (OR) 00623 (OR) 00624 (OR) 00625 (OR) 00626 (OR) 00627 (OR) 00628 (OR) 00629 (OR) 00630 (OR) 00631 (OR) 00632 (OR) 00633 (OR) 00634 (OR) 00635 (OR) 00636 (OR) 00637 (OR) 00638 (OR) 00639 (OR) 00640 (OR) 00641 (OR) 00642 (OR) 00643 (OR) 00644 (OR) 00645 (OR) 00646 (OR) 00647 (OR) 00648 (OR) 00649 (OR) 00650 (OR) 00651 (OR) 00652 (OR) 00653 (OR) 00654 (OR) 00655 (OR) 00656 (OR) 00657 (OR) 00658 (OR) 00659 (OR) 00660 (OR) 00661 (OR) 00662 (OR) 00663 (OR) 00664 (OR) 00665 (OR) 00666 (OR) 00667 (OR) 00668 (OR) 00669 (OR) 00670 (OR) 00671 (OR) 00672 (OR) 00673 (OR) 00674 (OR) 00675 (OR) 00676 (OR) 00677 (OR) 00678 (OR) 00679 (OR) 00680 (OR) 00681 (OR) 00682 (OR) 00683 (OR) 00684 (OR) 00685 (OR) 00686 (OR) 00687 (OR) 00688 (OR) 00689 (OR) 00690 (OR) 00691 (OR) 00692 (OR) 00693 (OR) 00694 (OR) 00695 (OR) 00696 (OR) 00697 (OR) 00698 (OR) 00699 (OR) 00700 (OR) 00701 (OR) 00702 (OR) 00703 (OR) 00704 (OR) 00705 (OR) 00706 (OR) 00707 (OR) 00708 (OR) 00709 (OR) 00710 (OR) 00711 (OR) 00712 (OR) 00713 (OR) 00714 (OR) 00715 (OR) 00716 (OR) 00717 (OR) 00718 (OR) 00719 (OR) 00720 (OR) 00721 (OR) 00722 (OR) 00723 (OR) 00724 (OR) 00725 (OR) 00726 (OR) 00727 (OR) 00728 (OR) 00729 (OR) 00730 (OR) 00731 (OR) 00732 (OR) 00733 (OR) 00734 (OR) 00735 (OR) 00736 (OR) 00737 (OR) 00738 (OR) 00739 (OR) 00740 (OR) 00741 (OR) 00742 (OR) 00743 (OR) 00744 (OR) 00745 (OR) 00746 (OR) 00747 (OR) 00748 (OR) 00749 (OR) 00750 (OR) 00751 (OR) 00752 (OR) 00753 (OR) 00754 (OR) 00755 (OR) 00756 (OR) 00757 (OR) 00758 (OR) 00759 (OR) 00760 (OR) 00761 (OR) 00762 (OR) 00763 (OR) 00764 (OR) 00765 (OR) 00766 (OR) 00767 (OR) 00768 (OR) 00769 (OR) 00770 (OR) 00771 (OR) 00772 (OR) 00773 (OR) 00774 (OR) 00775 (OR) 00776 (OR) 00777 (OR) 00778 (OR) 00779 (OR) 00780 (OR) 00781 (OR) 00782 (OR) 00783 (OR) 00784 (OR) 00785 (OR) 00786 (OR) 00787 (OR) 00788 (OR) 00789 (OR) 00790 (OR) 00791 (OR) 00792 (OR) 00793 (OR) 00794 (OR) 00795 (OR) 00796 (OR) 00797 (OR) 00798 (OR) 00799 (OR) 00800 (OR) 00801 (OR) 00802 (OR) 00803 (OR) 00804 (OR) 00805 (OR) 00806 (OR) 00807 (OR) 00808 (OR) 00809 (OR) 00810 (OR) 00811 (OR) 00812 (OR) 00813 (OR) 00814 (OR) 00815 (OR) 00816 (OR) 00817 (OR) 00818 (OR) 00819 (OR) 00820 (OR) 00821 (OR) 00822 (OR) 00823 (OR) 00824 (OR) 00825 (OR) 00826 (OR) 00827 (OR) 00828 (OR) 00829 (OR) 00830 (OR) 00831 (OR) 00832 (OR) 00833 (OR) 00834 (OR) 00835 (OR) 00836 (OR) 00837 (OR) 00838 (OR) 00839 (OR) 00840 (OR) 00841 (OR) 00842 (OR) 00843 (OR) 00844 (OR) 00845 (OR) 00846 (OR) 00847 (OR) 00848 (OR) 00849 (OR) 00850 (OR) 00851 (OR) 00852 (OR) 00853 (OR) 00854 (OR) 00855 (OR) 00856 (OR) 00857 (OR) 00858 (OR) 00859 (OR) 00860 (OR) 00861 (OR) 00862 (OR) 00863 (OR) 00864 (OR) 00865 (OR) 00866 (OR) 00867 (OR) 00868 (OR) 00869 (OR) 00870 (OR) 00871 (OR) 00872 (OR) 00873 (OR) 00874 (OR) 00875 (OR) 00876 (OR) 00877 (OR) 00878 (OR) 00879 (OR) 00880 (OR) 00881 (OR) 00882 (OR) 00883 (OR) 00884 (OR) 00885 (OR) 00886 (OR) 00887 (OR) 00888 (OR) 00889 (OR) 00890 (OR) 00891 (OR) 00892 (OR) 00893 (OR) 00894 (OR) 00895 (OR) 00896 (OR) 00897 (OR) 00898 (OR) 00899 (OR) 00900 (OR) 00901 (OR) 00902 (OR) 00903 (OR) 00904 (OR) 00905 (OR) 00906 (OR) 00907 (OR) 00908 (OR) 00909 (OR) 00910 (OR) 00911 (OR) 00912 (OR) 00913 (OR) 00914 (OR) 00915 (OR) 00916 (OR) 00917 (OR) 00918 (OR) 00919 (OR) 00920 (OR) 00921 (OR) 00922 (OR) 00923 (OR) 00924 (OR) 00925 (OR) 00926 (OR) 00927 (OR) 00928 (OR) 00929 (OR) 00930 (OR) 00931 (OR) 00932 (OR) 00933 (OR) 00934 (OR) 00935 (OR) 00936 (OR) 00937 (OR) 00938 (OR) 00939 (OR) 00940 (OR) 00941 (OR) 00942 (OR) 00943 (OR) 00944 (OR) 00945 (OR) 00946 (OR) 00947 (OR) 00948 (OR) 00949 (OR) 00950 (OR) 00951 (OR) 00952 (OR) 00953 (OR) 00954 (OR) 00955 (OR) 00956 (OR) 00957 (OR) 00958 (OR) 00959 (OR) 00960 (OR) 00961 (OR) 00962 (OR) 00963 (OR) 00964 (OR) 00965 (OR) 00966 (OR) 00967 (OR) 00968 (OR) 00969 (OR) 00970 (OR) 00971 (OR) 00972 (OR) 00973 (OR) 00974 (OR) 00975 (OR) 00976 (OR) 00977 (OR) 00978 (OR) 00979 (OR) 00980 (OR) 00981 (OR) 00982 (OR) 00983 (OR) 00984 (OR) 00985 (OR) 00986 (OR) 00987 (OR) 00988 (OR) 00989 (OR) 00990 (OR) 00991 (OR) 00992 (OR) 00993 (OR) 00994 (OR) 00995 (OR) 00996 (OR) 00997 (OR) 00998 (OR) 00999 (OR) 01000 (OR) 01001 (OR) 01002 (OR) 01003 (OR) 01004 (OR) 01005 (OR) 01006 (OR) 01007 (OR) 01008 (OR) 01009 (OR) 01010 (OR) 01011 (OR) 01012 (OR) 01013 (OR) 01014 (OR) 01015 (OR) 01016 (OR) 01017 (OR) 01018 (OR) 01019 (OR) 01020 (OR) 01021 (OR) 01022 (OR) 01023 (OR) 01024 (OR) 01025 (OR) 01026 (OR) 01027 (OR) 01028 (OR) 01029 (OR) 01030 (OR) 01031 (OR) 01032 (OR) 01033 (OR) 01034 (OR) 01035 (OR) 01036 (OR) 01037 (OR) 01038 (OR) 01039 (OR) 01040 (OR) 01041 (OR) 01042 (OR) 01043 (OR) 01044 (OR) 01045 (OR) 01046 (OR) 01047 (OR) 01048 (OR) 01049 (OR) 01050 (OR) 01051 (OR) 01052 (OR) 01053 (OR) 01054 (OR) 01055 (OR) 01056 (OR) 01057 (OR) 01058 (OR) 01059 (OR) 01060 (OR) 01061 (OR) 01062 (OR) 01063 (OR) 01064 (OR) 01065 (OR) 01066 (OR) 01067 (OR) 01068 (OR) 01069 (OR) 01070 (OR) 01071 (OR) 01072 (OR) 01073 (OR) 01074 (OR) 01075 (OR) 01076 (OR) 01077 (OR) 01078 (OR) 01079 (OR) 01080 (OR) 01081 (OR) 01082 (OR) 01083 (OR) 01084 (OR) 01085 (OR) 01086 (OR) 01087 (OR) 01088 (OR) 01089 (OR) 01090 (OR) 01091 (OR) 01092 (OR) 01093 (OR) 01094 (OR) 01095 (OR) 01096 (OR) 01097 (OR) 01098 (OR) 01099 (OR) 01100 (OR) 01101 (OR) 01102 (OR) 01103 (OR) 01104 (OR) 01105 (OR) 01106 (OR) 01107 (OR) 01108 (OR) 01109 (OR) 01110 (OR) 01111 (OR) 01112 (OR) 01113 (OR) 01114 (OR) 01115 (OR) 01116 (OR) 01117 (OR) 01118 (OR) 01119 (OR) 01120 (OR) 01121 (OR) 01122 (OR) 01123 (OR) 01124 (OR) 01125 (OR) 01126 (OR) 01127 (OR) 01128 (OR) 01129 (OR) 01130 (OR) 01131 (OR) 01132 (OR) 01133 (OR) 01134 (OR) 01135 (OR) 01136 (OR) 01137 (OR) 01138 (OR) 01139 (OR) 01140 (OR) 01141 (OR) 01142 (OR) 01143 (OR) 01144 (OR) 01145 (OR) 01146 (OR) 01147 (OR) 01148 (OR) 01149 (OR) 01150 (OR) 01151 (OR) 01152 (OR) 01153 (OR) 01154 (OR) 01155 (OR) 01156 (OR) 01157 (OR) 01158 (OR) 01159 (OR) 01160 (OR) 01161 (OR) 01162 (OR) 01163 (OR) 01164 (OR) 01165 (OR) 01166 (OR) 01167 (OR) 01168 (OR) 01169 (OR) 01170 (OR) 01171 (OR) 01172 (OR) 01173 (OR) 01174 (OR) 01175 (OR) 01176 (OR) 01177 (OR) 01178 (OR) 01179 (OR) 01180 (OR) 01181 (OR) 01182 (OR) 01183 (OR) 01184 (OR) 01185 (OR) 01186 (OR) 01187 (OR) 01188 (OR) 01189 (OR) 01190 (OR) 01191 (OR) 01192 (OR) 01193 (OR) 01194 (OR) 01195 (OR) 01196 (OR) 01197 (OR) 01198 (OR) 01199 (OR) 01200 (OR) 01201 (OR) 01202 (OR) 01203 (OR) 01204 (OR) 01205 (OR) 01206 (OR) 01207 (OR) 01208 (OR) 01209 (OR) 01210 (OR) 01211 (OR) 01212 (OR) 01213 (OR) 01214 (OR) 01215 (OR) 01216 (OR) 01217 (OR)