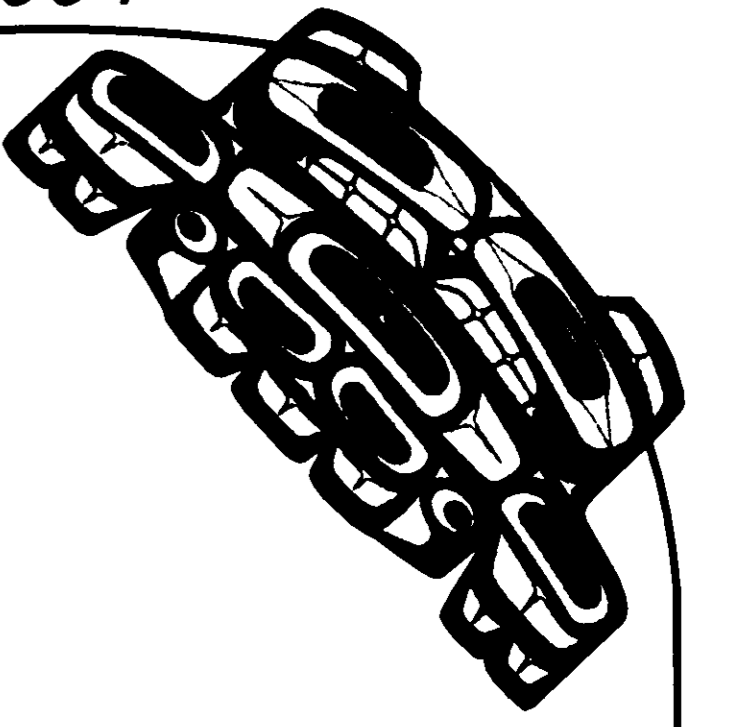




# UPPER SKAGIT INDIAN TRIBE

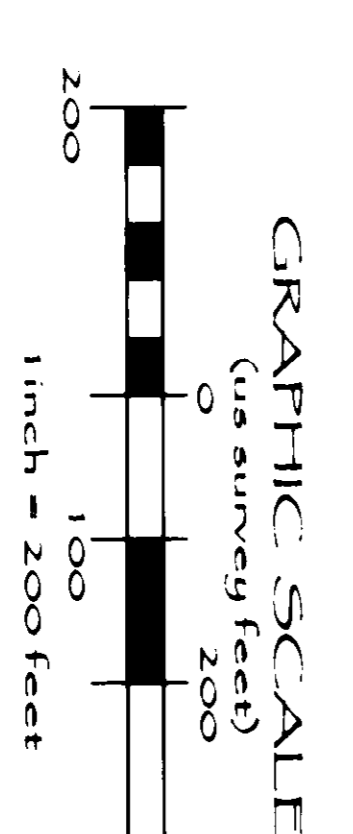
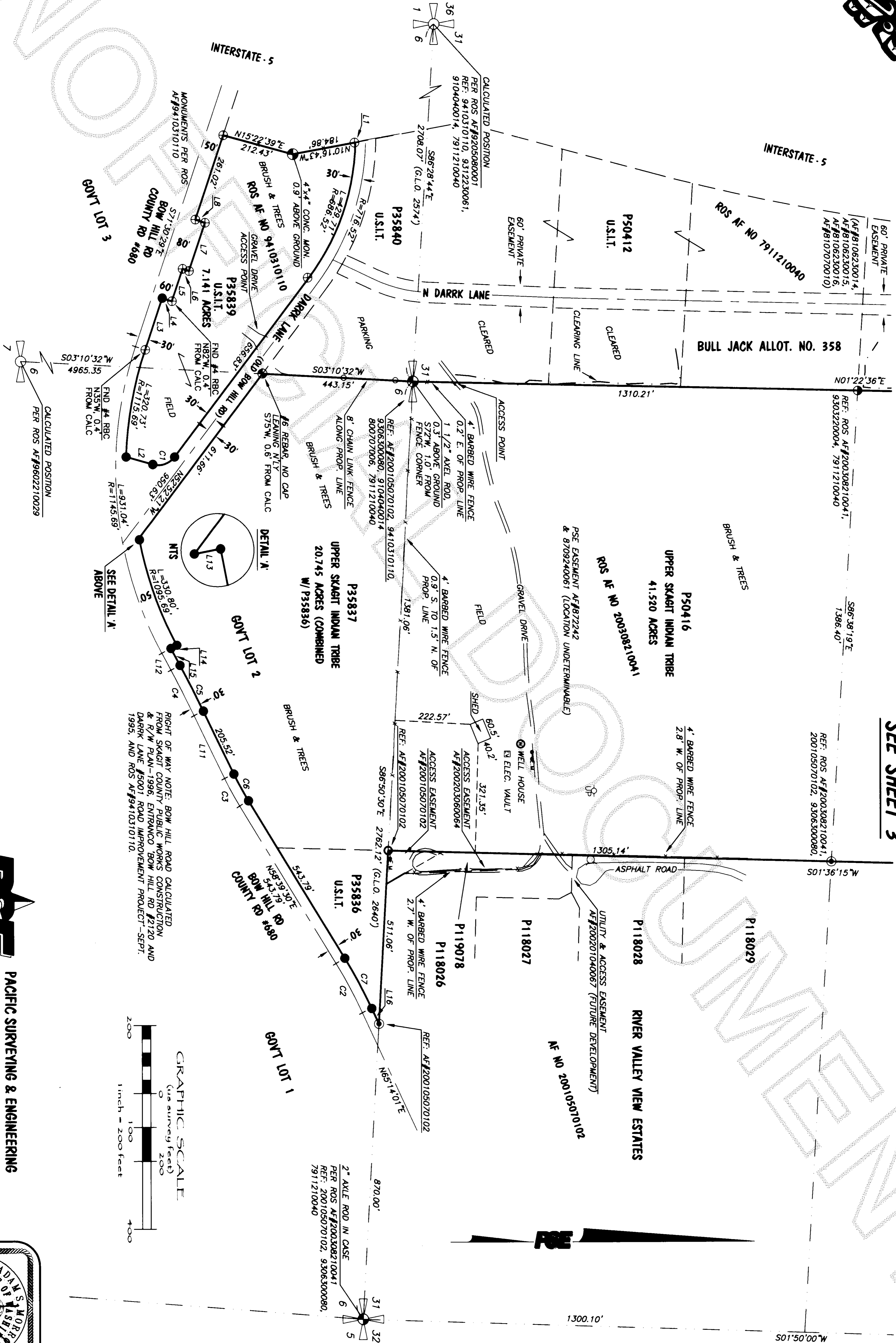
25944 COMMUNITY PLAZA WAY, SEDRO WOOLLEY, WA 98284, 360-854-7000, FAX: 360-854-7004



## RECORD OF SURVEY ALTA / ACSM LAND TITLE SURVEY

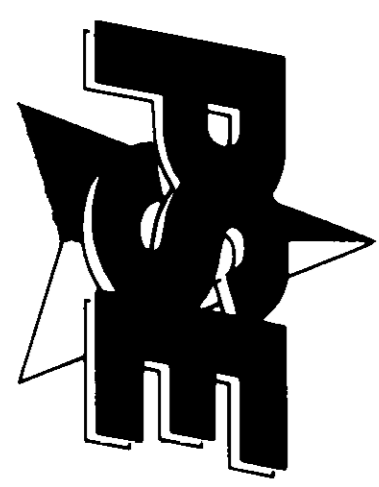
SITUATE IN A PORTION OF THE SE 1/4 OF SECTION 31, TOWNSHIP 36 NORTH,  
RANGE 4 EAST AND GOVT LOTS 1, 2 & 3 OF SECTION 6, TOWNSHIP 35  
NORTH, RANGE 4 EAST, W.M., SKAGIT COUNTY, WASHINGTON

SEE SHEET 3

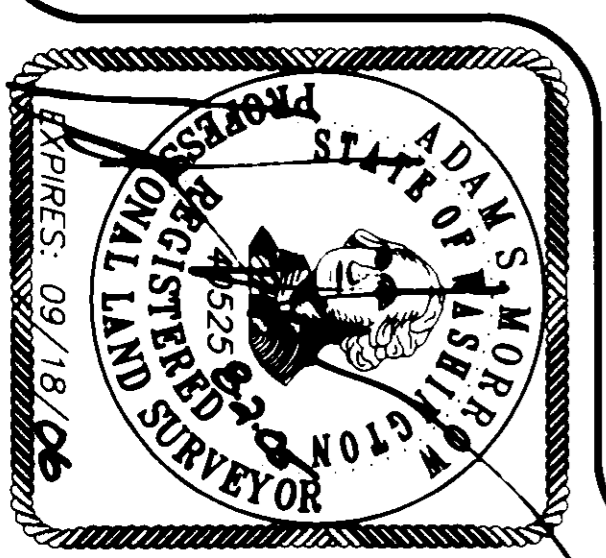


SEE SHEET 1 FOR LEGEND, NOTES, ETC.

DRAWN BY: AJN CHECKED BY: ASM F.B.# 200... DATE: 7.29.05 JOB NO. 2005032 SHEET NO. 2 OF 3 DWG. NO. uslt01a\_200x.dwg



**PACIFIC SURVEYING & ENGINEERING**  
1812 CORNWALL AVE. BELLINGHAM, WA 98225  
360.671.7387, FAX: 360.671.4685  
www.psesurvey.com



200503020064  
Skagit County Auditor  
8/2/2005 Page 2 of 3 3:11:53AM

# UPPER SKAGIT INDIAN TRIBE

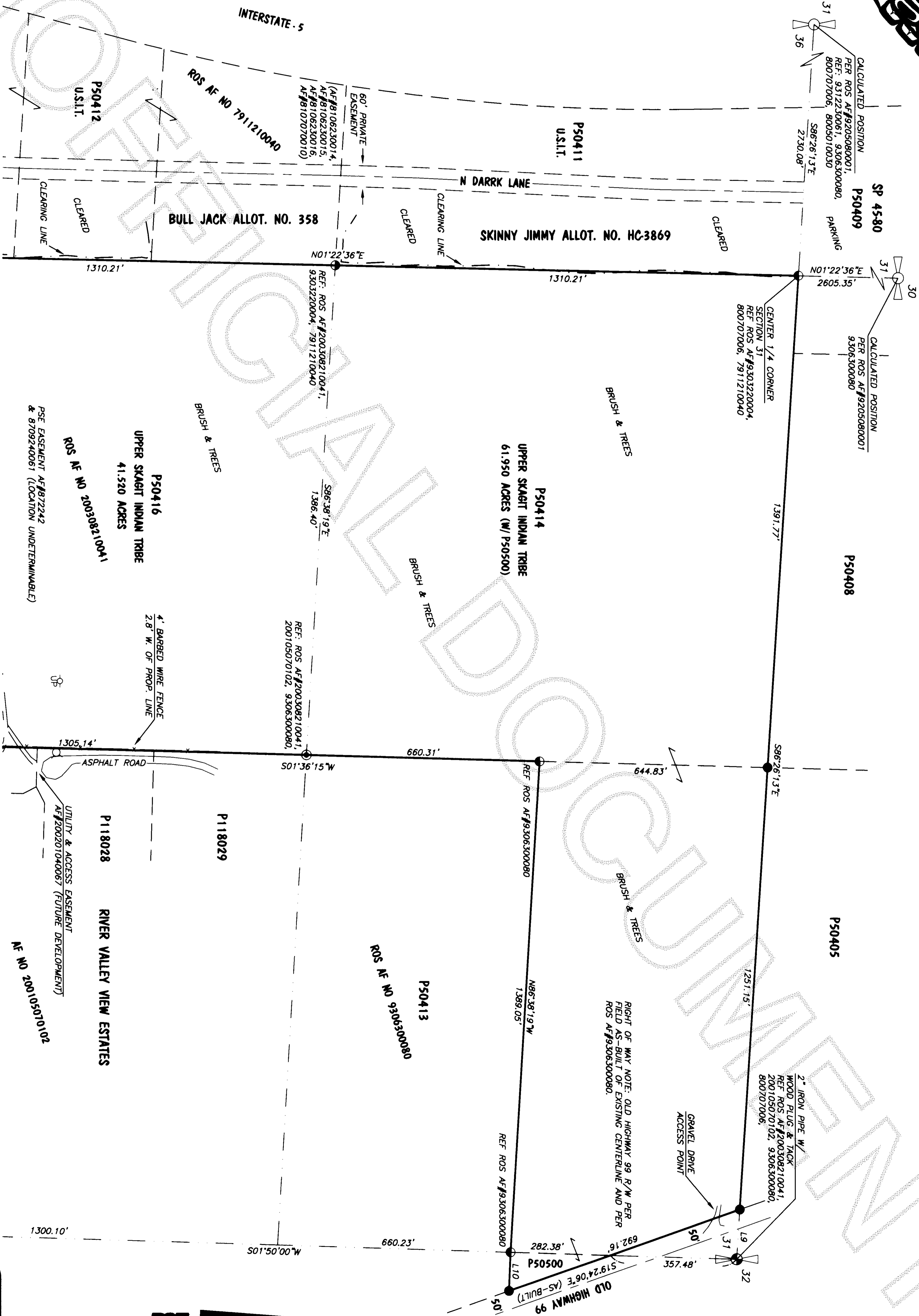
25944 COMMUNITY PLAZA WAY, SEDRO WOOLLEY, WA 98284, 360-854-7000, FAX: 360-854-7004

## RECORD OF SURVEY ALTA/ACSM LAND TITLE SURVEY

SITUATE IN A PORTION OF THE SE 1/4 OF SECTION 31, TOWNSHIP 36 NORTH,  
RANGE 4 EAST AND GOV'T LOTS 1, 2 & 3 OF SECTION 6, TOWNSHIP 35  
NORTH, RANGE 4 EAST, W.M., SKAGIT COUNTY, WASHINGTON

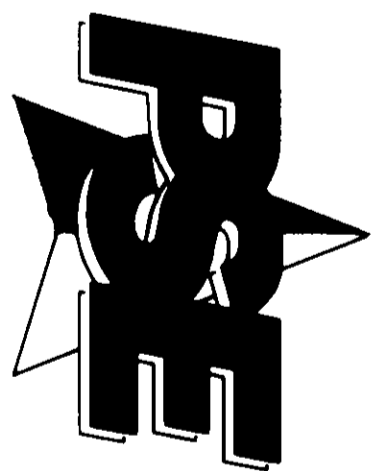
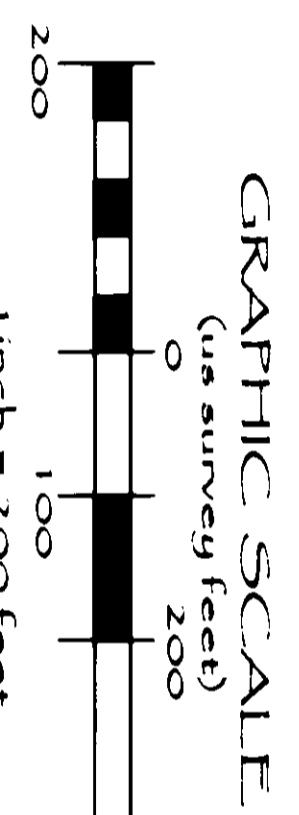
8/2/2005 Page 3 of 3 3:11:53AM

200508020064  
Skagit County Auditor



SEE SHEET 1 FOR LEGEND, NOTES, ETC.

SEE SHEET 2



**PACIFIC SURVEYING & ENGINEERING**  
1812 CORNWALL AVE. BELLINGHAM, WA 98225  
360.671.7387 FAX: 360.671.4685  
www.pacificsurvey.com

DRAWN BY: AJM

CHECKED BY: ASM

F.B.# 200...

DATE: 7.29.05

JOB NO. 2005032

SHEET NO. 3 OF 3

DWG. NO. usitalk\_200x.dwg

