

Auditor's Certificate

Anna Bunnell by
 Skagit County Auditor
 Judy Gunn

Project Measure
 N69°42'21"E
 Per Record & Recent Measure

Per Record & Recent Measure
 S20°17'39"E
 117.00

Per Record & Recent Measure
 N69°42'21"E
 250.00

Per Record & Recent Measure
 N69°42'21"E
 105.00

Per Record & Recent Measure
 N69°42'21"E
 117.00

Per Record & Recent Measure
 N69°42'21"E
 117.00

Per Record & Recent Measure
 N69°42'21"E
 117.00

Per Record & Recent Measure
 N69°42'21"E
 117.00

Per Record & Recent Measure
 N69°42'21"E
 117.00

Per Record & Recent Measure
 N69°42'21"E
 117.00

Per Record & Recent Measure
 N69°42'21"E
 117.00

Per Record & Recent Measure
 N69°42'21"E
 117.00

Per Record & Recent Measure
 N69°42'21"E
 117.00

Per Record & Recent Measure
 N69°42'21"E
 117.00

Per Record & Recent Measure
 N69°42'21"E
 117.00

Per Record & Recent Measure
 N69°42'21"E
 117.00

Per Record & Recent Measure
 N69°42'21"E
 117.00

Per Record & Recent Measure
 N69°42'21"E
 117.00

Per Record & Recent Measure
 N69°42'21"E
 117.00

Per Record & Recent Measure
 N69°42'21"E
 117.00

Per Record & Recent Measure
 N69°42'21"E
 117.00

Per Record & Recent Measure
 N69°42'21"E
 117.00

Per Record & Recent Measure
 N69°42'21"E
 117.00

Per Record & Recent Measure
 N69°42'21"E
 117.00

Per Record & Recent Measure
 N69°42'21"E
 117.00

Per Record & Recent Measure
 N69°42'21"E
 117.00

Per Record & Recent Measure
 N69°42'21"E
 117.00

Per Record & Recent Measure
 N69°42'21"E
 117.00

Per Record & Recent Measure
 N69°42'21"E
 117.00

Per Record & Recent Measure
 N69°42'21"E
 117.00

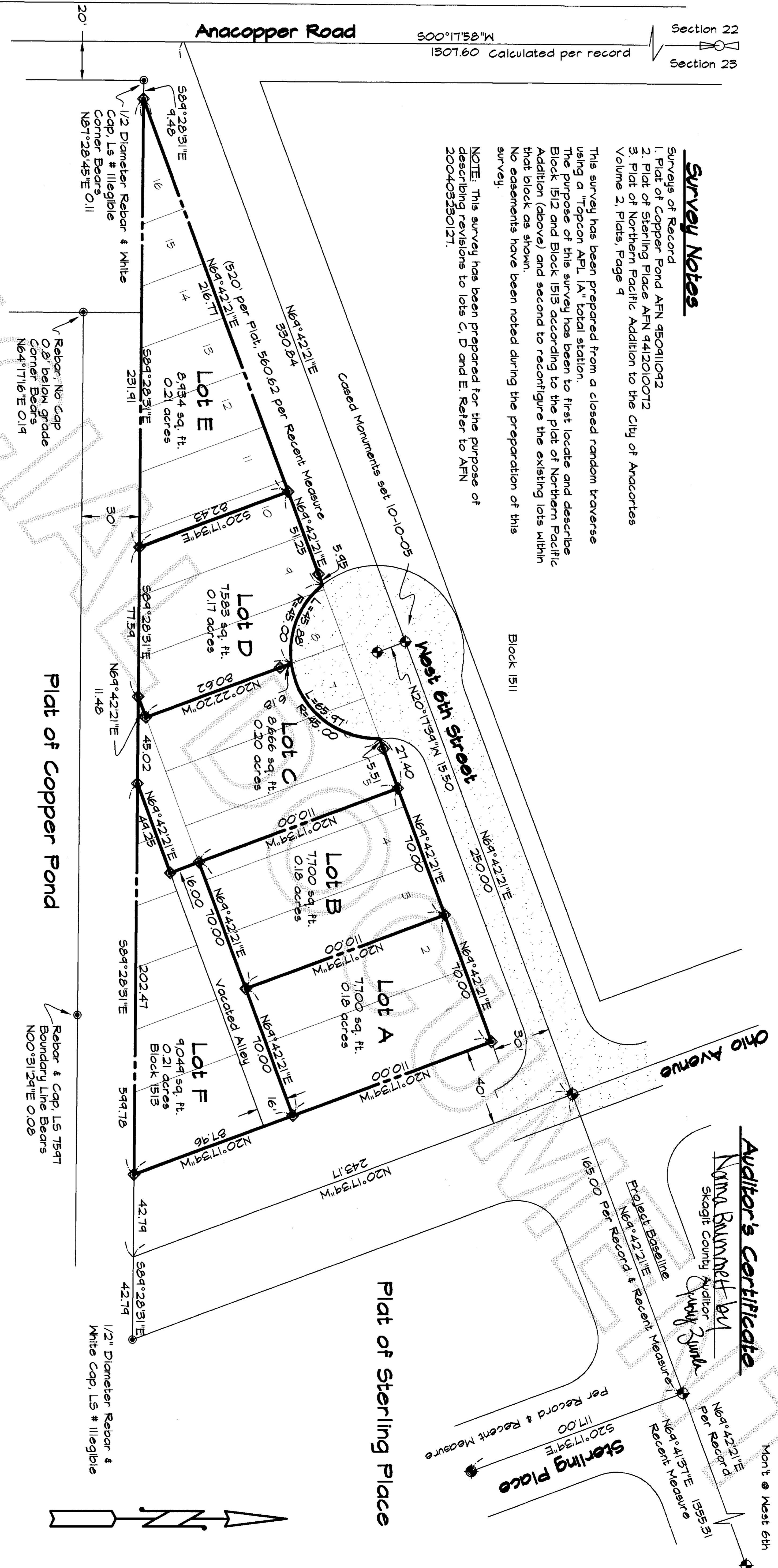
Per Record & Recent Measure
 N69°42'21"E
 117.00

Per Record & Recent Measure
 N69°42'21"E
 117.00

Per Record & Recent Measure
 N69°42'21"E
 117.00

Section 22
 Section 23

500°17'58"W
 1307.60 Calculated per record



Survey Notes

Surveys of Record
 1. Plat of Copper Pond AFN 4509411092
 2. Plat of Sterling Place AFN 4412010072
 3. Plat of Northern Pacific Addition to the City of Anacortes Volume 2, Plats, Page 9

This survey has been prepared from a closed random traverse using a "Topcon AP1 LA" total station.
 The purpose of this survey has been to first locate and describe Block 1512 and Block 1513 according to the plat of Northern Pacific Addition (above) and second to reconfigure the existing lots within that block as shown.
 No easements have been noted during the preparation of this survey.

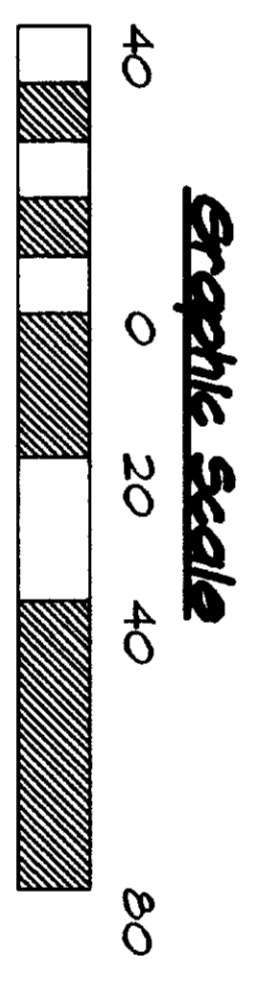
NOTE: This survey has been prepared for the purpose of describing revisions to lots C, D and E. Refer to AFN 200403250121.

Land Description

Auditor's File Number (AFN) 20031021001 - Block 1512
 Lots 1-16, Block 1512, "Northern Pacific Addition to Anacortes," as per plat recorded in Volume 2 of Plats, page 9, records of Skagit County, Washington.
 Also, Block 1513, "Northern Pacific Addition to Anacortes," as per Volume 2, Plats, page 9, records of Skagit County, Washington.
 Situate in the City of Anacortes, County of Skagit, State of Washington.

Legend

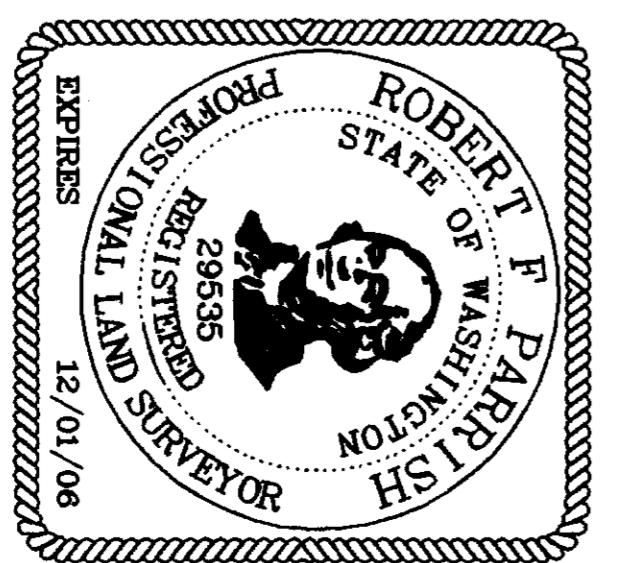
- ◆ Rebar & Cap, LS 24535
- Rebar as noted
- ◐ Cased Street Monument



Surveyor's Certificate

This map correctly represents a survey made by me or under my direction in conformance with the requirements of the survey recording act at the request of Randy A. Click of Skagit County, in March, 2004 and revised April, 2005.
 certificate no.
 LS 24535

Robert F. Parrish



Record of Survey

Re-recorded to show street monuments set in West 6th

Prepared at the request of

Randy A. Click

Block 1512, Lots 1 through 16, & Block 1513 Northern Addition
 Portions of the Southwest Quarter, Sect. 23 T. 35N., R.1E. 1M.,
 Anacortes, Skagit County, Washington

Parrish Land Surveying

142 BLOSSOM LANE, PORT TOWNSEND, WA, 98368
 (360) 588-1467 - parrishland.com

JOB NO.: 402-124REV

CADD BY: rp

CHK BY:

BK REF: 0&14

SCALE: 1" = 40'

DATE: 8/05/05