



200908280052
Skagit County Auditor

8/28/2009 Page 1 of 2 10:36AM

AFFIDAVIT OF MINOR CORRECTION OF SURVEY

TO: SKAGIT COUNTY AUDITOR

I, YOUNG-SOO KIM, being first duly sworn on oath, deposes and says:

That I am a **Professional Land Surveyor**: that I made a survey of land for the plat of Saratoga Passage View which document was recorded on the 10th day of June, 2009, Recording Number 200906100089, Records of Skagit County Auditor's Office, Mount Vernon, **Washington**, said document being a Treasurer's Certificate on Page 3 of 6 of Saratoga Passage View C.A.R.D. PL06-0107. That there being a minor survey, spelling, mathematical or drafting error, or omitted signature which does not in anyway materially subvert the approval of the original document by changing lot areas so as to affect zoning approvals, easements, conditions of approval or access roadways, the affiant approves the following change to the aforementioned recordings as follows:

TREASURER'S CERTIFICATE

THIS IS TO CERTIFY THAT ALL TAXES HERETOFORE LEVIED AND WHICH HAVE BECOME A LIEN UPON THE LANDS HEREIN DESCRIBED HAVE BEEN FULLY PAID AND DISCHARGED ACCORDING TO THE RECORDS OF MY OFFICE, UP TO AND INCLUDING THE YEAR OF 2009.

I, **KATIE JUNGQUIST** TREASURER OF SKAGIT COUNTY, WASHINGTON, HEREBY CERTIFY THAT A DEPOSIT HAS BEEN PAID TO COVER ANTICIPATED TAXES UP TO AND INCLUDING THE YEAR 2010.

THIS 4th DAY OF AUGUST, 2009

Katie Jungquist
SKAGIT COUNTY TREASURER



To Wit:

Young-Soo Kim
Professional Land Surveyor
License Number 32169

Surveyor Seal:



STATE OF WASHINGTON,)
COUNTY OF SKAGIT)

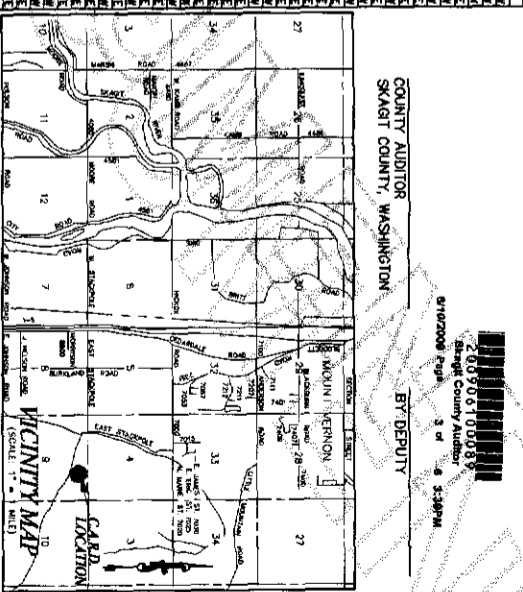
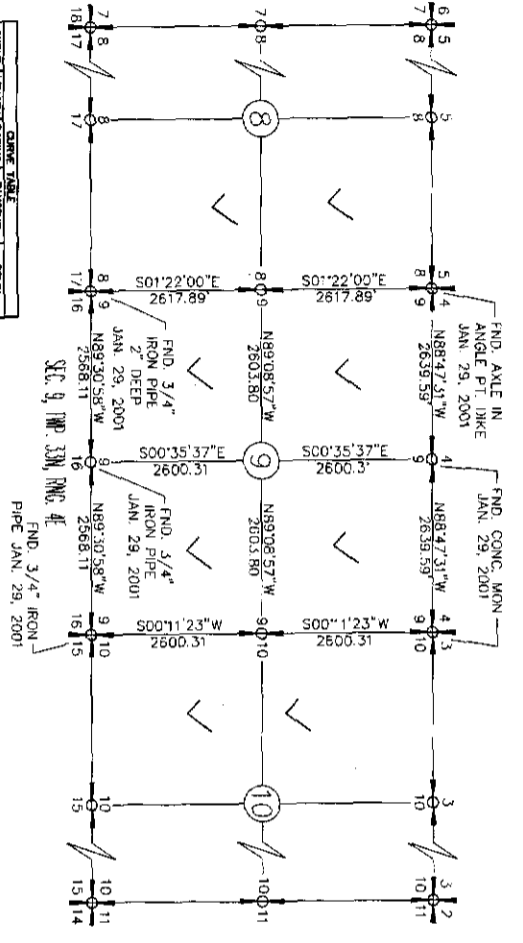
On this day personally appeared before me YOUNG-SOO KIM, to me known to be the individual described in and who executed the within and foregoing instrument and acknowledged to me that he signed the same as his free and voluntary act and deed for the purposes therein mentioned.

Given under my hand and official seal this 4 day of AUGUST, 2009.

NOTARY PUBLIC SEAL:



Young-Soo Kim
Notary Public in and for the
State of Washington residing
at Burlington



LINE	LENGTH	BEARING
1	1.73	S72°52'57\"/>
2	14.19	S100°02'28\"/>
3	8.60	S100°02'28\"/>
4	25.11	S82°28'42\"/>
5	46.07	S100°02'28\"/>
6	38.33	N07°51'21\"/>
7	63.07	S72°52'57\"/>
8	43.24	N44°31'02\"/>
9	18.60	S82°28'42\"/>
10	18.40	S88°27'02\"/>
11	33.19	S88°27'02\"/>
12	33.19	S88°27'02\"/>
13	33.19	S88°27'02\"/>
14	33.19	S88°27'02\"/>
15	33.19	S88°27'02\"/>
16	33.19	S88°27'02\"/>
17	33.19	S88°27'02\"/>
18	33.19	S88°27'02\"/>
19	33.19	S88°27'02\"/>
20	33.19	S88°27'02\"/>
21	33.19	S88°27'02\"/>
22	33.19	S88°27'02\"/>
23	33.19	S88°27'02\"/>
24	33.19	S88°27'02\"/>
25	33.19	S88°27'02\"/>
26	33.19	S88°27'02\"/>
27	33.19	S88°27'02\"/>
28	33.19	S88°27'02\"/>
29	33.19	S88°27'02\"/>
30	33.19	S88°27'02\"/>
31	33.19	S88°27'02\"/>
32	33.19	S88°27'02\"/>
33	33.19	S88°27'02\"/>
34	33.19	S88°27'02\"/>
35	33.19	S88°27'02\"/>
36	33.19	S88°27'02\"/>
37	33.19	S88°27'02\"/>
38	33.19	S88°27'02\"/>
39	33.19	S88°27'02\"/>
40	33.19	S88°27'02\"/>
41	33.19	S88°27'02\"/>
42	33.19	S88°27'02\"/>
43	33.19	S88°27'02\"/>
44	33.19	S88°27'02\"/>
45	33.19	S88°27'02\"/>
46	33.19	S88°27'02\"/>
47	33.19	S88°27'02\"/>
48	33.19	S88°27'02\"/>
49	33.19	S88°27'02\"/>
50	33.19	S88°27'02\"/>
51	33.19	S88°27'02\"/>
52	33.19	S88°27'02\"/>
53	33.19	S88°27'02\"/>
54	33.19	S88°27'02\"/>
55	33.19	S88°27'02\"/>
56	33.19	S88°27'02\"/>
57	33.19	S88°27'02\"/>
58	33.19	S88°27'02\"/>
59	33.19	S88°27'02\"/>
60	33.19	S88°27'02\"/>
61	33.19	S88°27'02\"/>
62	33.19	S88°27'02\"/>
63	33.19	S88°27'02\"/>
64	33.19	S88°27'02\"/>
65	33.19	S88°27'02\"/>
66	33.19	S88°27'02\"/>
67	33.19	S88°27'02\"/>
68	33.19	S88°27'02\"/>
69	33.19	S88°27'02\"/>
70	33.19	S88°27'02\"/>
71	33.19	S88°27'02\"/>
72	33.19	S88°27'02\"/>
73	33.19	S88°27'02\"/>
74	33.19	S88°27'02\"/>
75	33.19	S88°27'02\"/>
76	33.19	S88°27'02\"/>
77	33.19	S88°27'02\"/>
78	33.19	S88°27'02\"/>
79	33.19	S88°27'02\"/>
80	33.19	S88°27'02\"/>
81	33.19	S88°27'02\"/>
82	33.19	S88°27'02\"/>
83	33.19	S88°27'02\"/>
84	33.19	S88°27'02\"/>
85	33.19	S88°27'02\"/>
86	33.19	S88°27'02\"/>
87	33.19	S88°27'02\"/>
88	33.19	S88°27'02\"/>
89	33.19	S88°27'02\"/>
90	33.19	S88°27'02\"/>
91	33.19	S88°27'02\"/>
92	33.19	S88°27'02\"/>
93	33.19	S88°27'02\"/>
94	33.19	S88°27'02\"/>
95	33.19	S88°27'02\"/>
96	33.19	S88°27'02\"/>
97	33.19	S88°27'02\"/>
98	33.19	S88°27'02\"/>
99	33.19	S88°27'02\"/>
100	33.19	S88°27'02\"/>

PUD UTILITY EASEMENT
 Easements are granted to Public Utility District No. 1 of Skagit County, Washington, and its successors, for the purpose of installing, constructing, maintaining, repairing, and operating utility lines, including but not limited to electric, gas, water, and communication lines, and other similar public services over, across, under, along, and adjacent to the lands shown on this plat. The easement shall include the right to install, maintain, repair, and operate utility lines, including but not limited to electric, gas, water, and communication lines, and other similar public services over, across, under, along, and adjacent to the lands shown on this plat. The easement shall include the right to install, maintain, repair, and operate utility lines, including but not limited to electric, gas, water, and communication lines, and other similar public services over, across, under, along, and adjacent to the lands shown on this plat. The easement shall include the right to install, maintain, repair, and operate utility lines, including but not limited to electric, gas, water, and communication lines, and other similar public services over, across, under, along, and adjacent to the lands shown on this plat.

ADDRESS RANGE	BEARING RANGE	EXPOSED RANGE
20176	109368	24587
20177	109368	24587
20178	109368	24587
20179	109368	24587
20180	109368	24587
20181	109368	24587
20182	109368	24587
20183	109368	24587
20184	109368	24587
20185	109368	24587
20186	109368	24587
20187	109368	24587
20188	109368	24587
20189	109368	24587
20190	109368	24587
20191	109368	24587
20192	109368	24587
20193	109368	24587
20194	109368	24587
20195	109368	24587
20196	109368	24587
20197	109368	24587
20198	109368	24587
20199	109368	24587
20200	109368	24587

TREASURER'S CERTIFICATE
 THIS IS TO CERTIFY THAT ALL TAXES HEREON DUE AND UNPAID HAVE BEEN FULLY PAID AND DISCHARGED ACCORDING TO THE RECORDS OF MY OFFICE UP TO AND INCLUDING THE YEAR 2008.

APPROVALS
 THE WITHIN AND FOREGOING PLAT/CARD IS APPROVED IN ACCORDANCE WITH THE PROVISIONS OF THE SKAGIT COUNTY PLAT ORDINANCE THIS 12th DAY OF April 2008.

APPROVED:
 [Signature] COUNTY ENGINEER
 [Signature] COUNTY DEPUTY



SURVEYORS CERTIFICATE
 I, YOUNG-SOO PARK, DO HEREBY CERTIFY THAT THIS PLAT, TITLED "SARATOGA PASSAGE VIEW C.A.R.D. PL 06-0107 DATE 4/19", WAS PREPARED BY ME OR UNDER MY CLOSE PERSONAL SUPERVISION AND THAT I AM A LICENSED SURVEYOR IN THE STATE OF WASHINGTON. I HAVE BEEN FULLY TRAINED AND QUALIFIED TO PREPARE THIS PLAT AND I HAVE BEEN FULLY TRAINED AND QUALIFIED TO PREPARE THIS PLAT AND I HAVE BEEN FULLY TRAINED AND QUALIFIED TO PREPARE THIS PLAT.

Young-Soo Park
 YOUNG-SOO PARK, 1747

SUMMIT ENGINEERS & SURVEYORS, INC.
 2718 OLD HIGHWAY 88 SOUTH ROAD, MOUNT VERNON, WA 98273
 PHONE: (360) 416-4889 FAX: (360) 416-4949
 E-MAIL: YSK@SUMMITES.COM

SUMMIT