

SITUATE IN THE NE 1/4, NW 1/4, SE 1/4 & SW 1/4 OF SECTION 20 AND THE SW 1/4 OF SECTION 21,
TOWNSHIP 34 NORTH, RANGE 2 EAST, W.M., SKAGIT COUNTY, WASHINGTON

RECORD OF SURVEY



201203230030
Skagit County Auditor

3/23/2012 Page 1 of 6 9:37AM

MONUMENT HISTORIES AND DESCRIPTIONS

EAST QUARTER CORNER SECTION 21 'A'

JANUARY 29, 1874, GENERAL LAND OFFICE DEPUTY SURVEYOR LEWIS VAN VLEET, UNDER GOVERNMENT CONTRACT NO. 184, SET A POST 3 INCH FLATTENED, 4 FEET LONG, 18 INCHES IN THE GROUND, FOR EAST QUARTER CORNER, SECTION 21.
BETWEEN AUGUST AND DECEMBER, 1917, GENERAL LAND OFFICE DEPUTY SURVEYOR GEORGE R. CAMPBELL, UNDER GOVERNMENT CONTRACT, A RETRACEMENT OF PORTIONS OF THE SWINOMISH INDIAN RESERVATION, SET AN IRON POST, 3 FEET LONG, 1 INCH DIAMETER, 26 INCHES IN THE GROUND, FOR QUARTER CORNER, WITH BRASS CAP MARKED APPROPRIATELY.
MARCH 21, 1936, SKAGIT FIELD NOTES ROAD #4001, WEST 1/4 CORNER ANGLE POINT, SECTION 22, TOWNSHIP 34 NORTH, RANGE 2 EAST, W.M., MONUMENT IS NOT DESCRIBED.
AUGUST 30, 1974, AUDITOR'S FILE NUMBER 805587, FOUND NAIL IN ROAD FROM PREVIOUS SURVEYS AND COUNTY REFERENCE POINTS.
MARCH 29, 1982, AUDITOR'S FILE NUMBER 8203290039, FOUND 1917 STEEL POST WITH BRASS CAP.
SEPTEMBER 27, 1982, AUDITOR'S FILE NUMBER 8209270016, RAILROAD SPIKE IN HIGHWAY. (POSSIBLE SCORNBERS ERROR)
AUGUST 2, 1983, AUDITOR'S FILE NUMBER 8308020003, FOUND BRASS DISK MONUMENT CASED STAMPED 1/4 S21 S22.
PERPETUATED AND UTILIZED BY NUMEROUS RECORD OF SURVEYS, PLATS AND BLM, RECORDED AND UNRECORDED.
DECEMBER 2011, FOUND 2 1/2 INCH DIAMETER GENERAL LAND OFFICES BRASS CAP, APPROPRIATELY MARKED, ON 1 INCH DIAMETER IRON PIPE IN MONUMENT CASE, 1.0 BELOW ASPHALT GRADE. ACCEPTED AS QUARTER CORNER.

NORTH SIXTEENTH CORNER SECTION 21 AND 22 'B'

JANUARY 29, 1874, GENERAL LAND OFFICE DEPUTY SURVEYOR LEWIS VAN VLEET, UNDER GOVERNMENT CONTRACT NO. 184, SET A POST 3 INCH FLATTENED, 4 FEET LONG, 18 INCHES IN THE GROUND FOR NORTH 1/16TH CORNER, SECTION 21 AND 22.
BETWEEN AUGUST AND DECEMBER, 1917, GENERAL LAND OFFICE DEPUTY SURVEYOR GEORGE R. CAMPBELL, UNDER GOVERNMENT CONTRACT, A RETRACEMENT OF PORTIONS OF THE SWINOMISH INDIAN RESERVATION, SET AN IRON POST, 3 FEET LONG, 1 INCH DIAMETER, 26 INCHES IN THE GROUND, FOR NORTH 1/16TH CORNER, WITH BRASS CAP MARKED APPROPRIATELY.

MARCH 21, 1936, SKAGIT FIELD NOTES ROAD #4001, WEST 1/16 CORNER ANGLE POINT SECTION 22, TOWNSHIP 34 NORTH, RANGE 2 EAST, W.M., MONUMENT IS NOT DESCRIBED.

AUGUST 30, 1974, AUDITOR'S FILE NUMBER 805587, SIXTEENTH CORNER NOT FOUND.

MARCH 29, 1982, AUDITOR'S FILE NUMBER 8203290039, FOUND 1917 IRON POST WITH BRASS CAP.

PERPETUATED AND UTILIZED BY NUMEROUS RECORD OF SURVEYS, PLATS AND BLM, RECORDED AND UNRECORDED.

DECEMBER 2011, FOUND 2 1/2 INCH DIAMETER GENERAL LAND OFFICES BRASS CAP, APPROPRIATELY MARKED, ORIENTED EASTERLY, ON 1 INCH DIAMETER IRON PIPE IN MONUMENT CASE, 1.7 BELOW ASPHALT GRADE. ACCEPTED AS NORTH SIXTEENTH CORNER, SECTION 21 AND 22.

CENTER EAST SIXTEENTH CORNER SECTION 21 AND 22 'C'

FEBRUARY 6, 1874, GENERAL LAND OFFICE DEPUTY SURVEYOR LEWIS VAN VLEET, UNDER GOVERNMENT CONTRACT NO. 184, SET A POST 3 INCH FLATTENED, 4 FEET LONG, 18 INCHES IN THE GROUND FOR CENTER EAST SIXTEENTH CORNER, IN MOUND OF STONE.

JUNE 16, 1970, AUDITOR'S FILE NUMBER 740161, PIPE.

MARCH 29, 1982, AUDITOR'S FILE NUMBER 8203290039, FOUND 1 3/4 INCH AXLE PER 1949 SKAGIT COUNTY ENGINEER'S SURVEY, 3.05 FEET EAST OF A FOUND 3/4 INCH PIPE, PIPE WAS SET IN 1965.

SEPTEMBER 7, 2010, AUDITOR'S FILE NUMBER 201009070251, FOUND AXLE IN CONCRETE.

PERPETUATED AND UTILIZED BY NUMEROUS RECORD OF SURVEYS AND PLATS, RECORDED AND UNRECORDED.

DECEMBER 2011, FOUND 1 3/4 INCH DIAMETER AXLE ROD, WITH "X" ON TOP, IN 8 INCH CONCRETE PAD, 1.5 BELOW GRADE. ACCEPTED AS CENTER EAST SIXTEENTH CORNER.

MEANDER CORNER BETWEEN GOVERNMENT LOTS 2 AND 9 'D'

FEBRUARY 6, 1874, GENERAL LAND OFFICE DEPUTY SURVEYOR LEWIS VAN VLEET, UNDER GOVERNMENT CONTRACT NO. 184, SET A POST 3 INCH FLATTENED, 4 FEET LONG, 18 INCHES IN THE GROUND FOR MEANDER CORNER TO FRACTIONAL NORTH AND SOUTH HALF OF SECTION 21, IN MOUND OF STONE.

MARCH 29, 1982, AUDITOR'S FILE NUMBER 8203290039, MEANDER CORNER NOT FOUND, SET CAST ALUMINUM MONUMENT AS WITNESS CORNER.

DECEMBER 2011, FOUND 3 1/4 INCH DIAMETER ALUMINUM CAP, "TAKKEMA AND KINGMA INC. L.S. 15640, AND AN "X", 0.4 BELOW GRADE. ACCEPTED AS WITNESS CORNER TO MEANDER CORNER, NO EVIDENCE OF ORIGINAL MEANDER CORNER FOUND, RE-MARKED THE CAP "PSE 35147 2011."

ACREAGE

SUBJECT PARCEL ACREAGE: 82.9 ACRES ±

AUDITOR'S CERTIFICATE

Filed for record this 33rd day of March 2012 at 9:37AM
in book _____ of surveys at page _____ at the request of
PACIFIC SURVEYING AND ENGINEERING SERVICES INC.

County Auditor

DRAWN BY: RMT

CHECKED BY: PKB

F.B.# 117 SERIES

DATE: 03.22.12

JOB NO. 2011141

SHEET NO. 1 OF 6

DWG. NO. 2011141-swk_ROS_Solar.dwg

"KUKUTALI PRESERVE"

RECORD OF SURVEY

SWINOMISH TRIBAL COMMUNITY

SURVEYOR'S CERTIFICATE

This map correctly represents a survey made by me or under my direction in conformance with the requirements of the Survey Recording Act at the request of the Swinomish Tribal Community in December, 2011

Certificate No.: 35147

BASIS OF BEARINGS

ASTRONOMIC NORTH BASED ON SOLAR OBSERVATION, HOUR ANGLE METHOD.

PARCEL DESCRIPTIONS

THE LAND REFERRED TO HEREIN IS SITUATED IN THE STATE OF WASHINGTON, COUNTY OF SKAGIT, AND IS DESCRIBED AS FOLLOWS:
GOVERNMENT LOT 2 IN SECTION 20, TOWNSHIP 34 NORTH, RANGE 2 EAST, W.M.
ALSO GOVERNMENT LOTS 5, 6, 7, 8 AND 9 IN SECTION 21, TOWNSHIP 34 NORTH, RANGE 2 EAST, W.M.

TOGETHER WITH A NON-EXCLUSIVE EASEMENT FOR INGRESS, EGRESS AND UTILITIES OVER THE SOUTH 60 FEET OF GOVERNMENT LOT 2, SECTION 21, TOWNSHIP 34 NORTH, RANGE 2 EAST, W.M.

AND

THE SOUTH 410.32 FEET OF GOVERNMENT LOT 2, SECTION 21, TOWNSHIP 34 NORTH, RANGE 2 EAST, W.M.
EXCEPT THE EAST 30 FEET THEREOF FOR ROAD.

MONUMENT HISTORIES AND DESCRIPTIONS

MEANDER CORNER BETWEEN GOVERNMENT LOTS 5 AND 9 'E'

FEBRUARY 6, 1874, GENERAL LAND OFFICE DEPUTY SURVEYOR LEWIS VAN VLEET, UNDER GOVERNMENT CONTRACT NO. 184, SET A POST 3 INCH FLATTENED, 4 FEET LONG, 18 INCHES IN THE GROUND FOR MEANDER CORNER TO FRACTIONAL NORTH AND SOUTH HALF OF SECTION 21.

MARCH 29, 1982, AUDITOR'S FILE NUMBER 8203290039, MEANDER CORNER NOT FOUND, SET CAST ALUMINUM MONUMENT AS WITNESS CORNER.

DECEMBER 2011, FOUND 3 1/4 INCH DIAMETER ALUMINUM CAP, "TAKKEMA AND KINGMA INC. L.S. 15640, AND AN "X", 0.1 BELOW GRADE. ACCEPTED AS WITNESS CORNER TO MEANDER CORNER, NO EVIDENCE OF ORIGINAL MEANDER CORNER FOUND, RE-MARKED THE CAP "PSE 35147 2011."

CENTER QUARTER CORNER 'F'

FEBRUARY 6, 1874, GENERAL LAND OFFICE DEPUTY SURVEYOR LEWIS VAN VLEET, UNDER GOVERNMENT CONTRACT NO. 184, SET A POST 3 INCH FLATTENED, 4 FEET LONG, 18 INCHES IN THE GROUND FOR QUARTER SECTION CORNER IN THE CENTER OF SECTION 21.

MARCH 29, 1982, AUDITOR'S FILE NUMBER 8203290039, SET CAST ALUMINUM MONUMENT.

DECEMBER 2011, FOUND 3 1/4 INCH DIAMETER ALUMINUM CAP, "TAKKEMA AND KINGMA INC. L.S. 15640, AND AN "X", 0.2 BELOW GRADE. ACCEPTED AS CENTER QUARTER CORNER, NO ORIGINAL EVIDENCE OF CENTER QUARTER CORNER FOUND, RE-MARKED THE CAP "PSE 35147 2011."

MEANDER CORNER BETWEEN GOVERNMENT LOTS 6 AND 8 'G'

FEBRUARY 6, 1874, GENERAL LAND OFFICE DEPUTY SURVEYOR LEWIS VAN VLEET, UNDER GOVERNMENT CONTRACT NO. 184, SET A POST 3 INCH FLATTENED, 4 FEET LONG, 18 INCHES IN THE GROUND FOR MEANDER CORNER TO FRACTIONAL NORTH AND SOUTH HALF OF SECTION 21.

MARCH 29, 1982, AUDITOR'S FILE NUMBER 8203290039, MEANDER CORNER NOT FOUND, SET CAST ALUMINUM MONUMENT AS WITNESS CORNER.

DECEMBER 2011, FOUND 3 1/4 INCH DIAMETER ALUMINUM CAP, "TAKKEMA AND KINGMA INC. L.S. 15640, AND AN "X", 0.2 BELOW GRADE. ACCEPTED AS WITNESS CORNER TO MEANDER CORNER, NO ORIGINAL EVIDENCE OF MEANDER CORNER FOUND, RE-MARKED THE CAP "PSE 35147 2011."

MEANDER CORNER IN GOVERNMENT LOT 2 'H'

MARCH 29, 1982, AUDITOR'S FILE NUMBER 8203290039, SET CAST ALUMINUM MONUMENT AS WITNESS CORNER.

DECEMBER 2011, FOUND 3 1/4 INCH DIAMETER ALUMINUM CAP, "TAKKEMA AND KINGMA INC. L.S. 15640, AND AN "X", LISTING AT 45 DEGREES NORTH ON EDGE OF ERODING BANK, NOT ACCEPTED AS A WITNESS CORNER, NOT RE-MONUMENTED AS THIS IS A NON-ESSENTIAL MONUMENT IN GOVERNMENT LOT 2.

MEANDER CORNER BETWEEN GOVERNMENT LOTS 8 AND 9 'I'

MARCH 29, 1982, AUDITOR'S FILE NUMBER 8203290039, SET CAST ALUMINUM MONUMENT AS WITNESS CORNER.

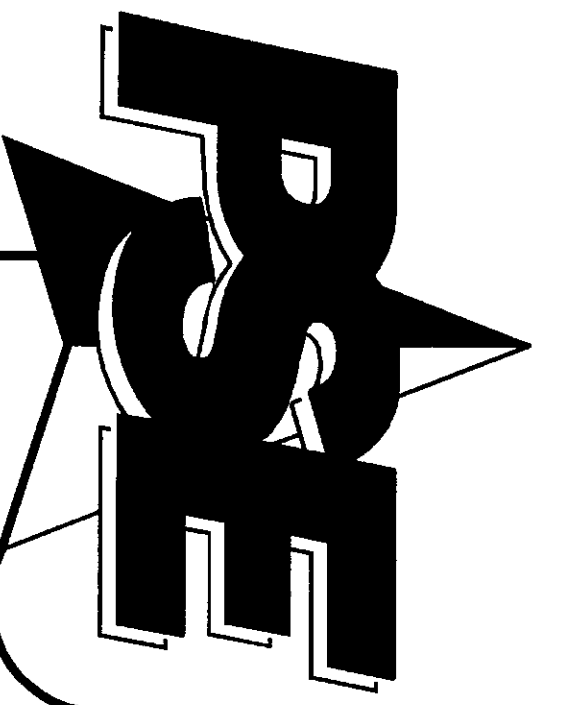
DECEMBER 2011, FOUND 3 1/4 INCH DIAMETER ALUMINUM CAP, "TAKKEMA AND KINGMA INC. L.S. 15640, AND AN "X", 0.2 BELOW GRADE. ACCEPTED AS WITNESS CORNER TO MEANDER CORNER BETWEEN GOVERNMENT LOTS 8 AND 9, RE-MARKED THE CAP "PSE 35147 2011."

MEANDER CORNER BETWEEN GOVERNMENT LOTS 5 AND 6 'J'

MARCH 29, 1982, AUDITOR'S FILE NUMBER 8203290039, SET CAST ALUMINUM MONUMENT AS WITNESS CORNER.

DECEMBER 2011, FOUND 3 1/4 INCH DIAMETER ALUMINUM CAP, "TAKKEMA AND KINGMA INC. L.S. 15640, AND AN "X", 0.2 BELOW GRADE. ACCEPTED AS WITNESS CORNER TO MEANDER CORNER BETWEEN GOVERNMENT LOTS 5 AND 6, RE-MARKED THE CAP "PSE 35147 2011."

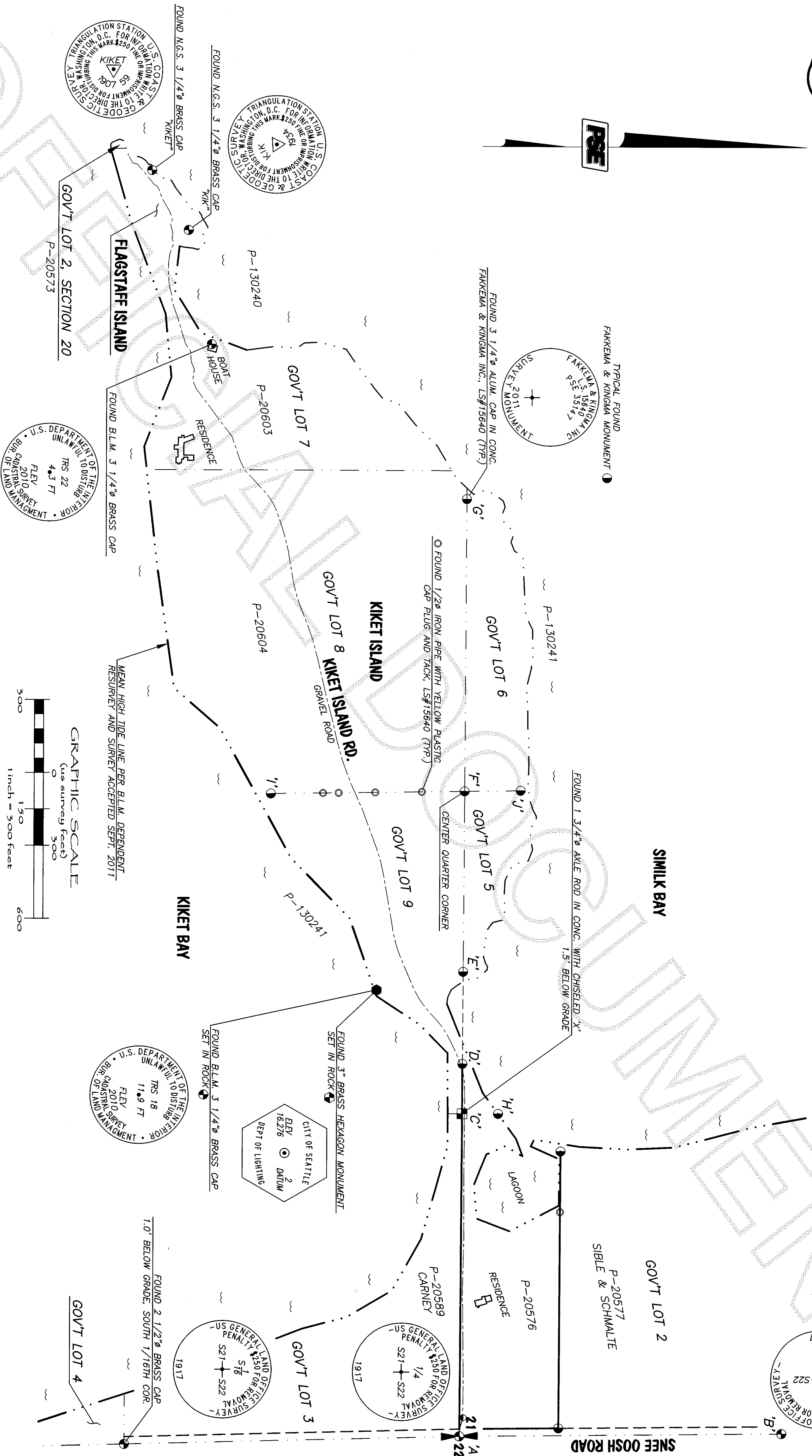




RECORD OF SURVEY

SITUATE IN THE NE 1/4, NW 1/4, SE 1/4 & SW 1/4 OF SECTION 20 AND THE SW 1/4 OF SECTION 21,
TOWNSHIP 34 NORTH, RANGE 2 EAST, W.M., SKAGIT COUNTY, WASHINGTON

201203230030
Skagit County Auditor
3/23/2012 Page 2 of 8 9:37AM

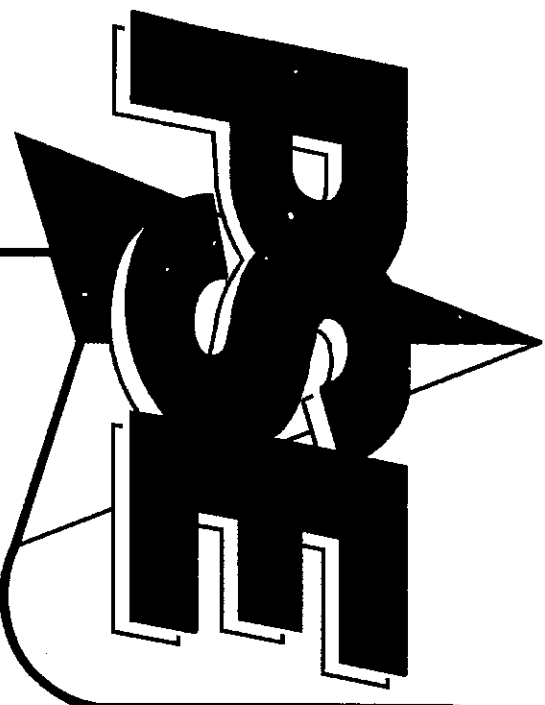


"KUKUTALI PRESERVE" RECORD OF SURVEY SWINOMISH TRIBAL COMMUNITY

DRAWN BY: RMT CHECKED BY: PKB F.B.# 117 SERIES DATE: 03.22.12 JOB NO. 2011141 SHEET NO. 2 OF 6 DWG. NO. 2011141-SVX-ROS_Solar.dwg



3-23-12



PACIFIC SURVEY & ENGINEERING INC EMAIL: pse@psurvey.com
1812 CORNWALL AVE, BELLINGHAM, WA 98225 PHONE: 671.7387 FAX: 671.4685 www.psurvey.com

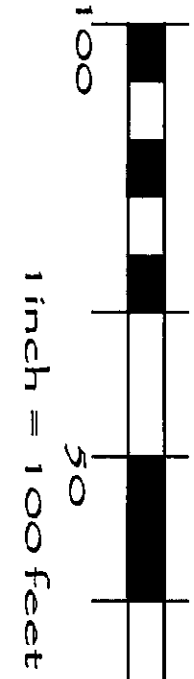
RECORD OF SURVEY

201203230030
Skagit County Auditor
3/23/2012 Page 3 of 6 9:37AM

SITUATE IN THE NE 1/4, NW 1/4, SE 1/4 & SW 1/4 OF SECTION 20 AND THE SW 1/4 OF SECTION 21,
TOWNSHIP 34 NORTH, RANGE 2 EAST, W.M., SKAGIT COUNTY, WASHINGTON

MEAN HIGH TIDE LINE PER B.L.M. DEPENDENT
RESURVEY AND SURVEY ACCEPTED SEPT. 2011

GRAPHIC SCALE
(use survey feet)



SIMILK BAY

18" RCP CULVERT
ABANDONED

30.87' N63°15'31"W

30.87' N63°15'31"E

30.87' N63°15'31"E

30.87' N63°15'31"E

30.87' N63°15'31"E

30.87' N63°15'31"E

30.87' N63°15'31"E

30.87' N63°15'31"E

30.87' N63°15'31"E

30.87' N63°15'31"E

30.87' N63°15'31"E

30.87' N63°15'31"E

30.87' N63°15'31"E

30.87' N63°15'31"E

30.87' N63°15'31"E

30.87' N63°15'31"E

30.87' N63°15'31"E

30.87' N63°15'31"E

30.87' N63°15'31"E

30.87' N63°15'31"E

30.87' N63°15'31"E

30.87' N63°15'31"E

30.87' N63°15'31"E

30.87' N63°15'31"E

30.87' N63°15'31"E

30.87' N63°15'31"E

30.87' N63°15'31"E

30.87' N63°15'31"E

30.87' N63°15'31"E

SEE RESIDENCE DETAIL (THIS SHEET)

KIKET LAGOON

DEED - 410.32'

DEED - 410.32'

DEED - 410.32'

DEED - 410.32'

DEED - 410.32'

DEED - 410.32'

DEED - 410.32'

DEED - 410.32'

DEED - 410.32'

DEED - 410.32'

DEED - 410.32'

DEED - 410.32'

DEED - 410.32'

DEED - 410.32'

DEED - 410.32'

DEED - 410.32'

DEED - 410.32'

DEED - 410.32'

DEED - 410.32'

DEED - 410.32'

DEED - 410.32'

DEED - 410.32'

DEED - 410.32'

SEE SHEET 4

GOV'T LOT 9

GOV'T LOT 9

GOV'T LOT 9

GOV'T LOT 9

GOV'T LOT 9

GOV'T LOT 9

GOV'T LOT 9

GOV'T LOT 9

GOV'T LOT 9

GOV'T LOT 9

GOV'T LOT 9

GOV'T LOT 9

GOV'T LOT 9

GOV'T LOT 9

GOV'T LOT 9

GOV'T LOT 9

GOV'T LOT 9

GOV'T LOT 9

GOV'T LOT 9

GOV'T LOT 9

GOV'T LOT 9

GOV'T LOT 9

GOV'T LOT 9

GOV'T LOT 9

GOV'T LOT 9

GOV'T LOT 9

GOV'T LOT 9

GOV'T LOT 9

GOV'T LOT 9

GOV'T LOT 9

GOV'T LOT 9

GOV'T LOT 9

GOV'T LOT 9

GOV'T LOT 9

GOV'T LOT 9

GOV'T LOT 9

GOV'T LOT 9

GOV'T LOT 9

KIKET BAY

KIKET BAY

KIKET BAY

KIKET BAY

KIKET BAY

KIKET BAY

KIKET BAY

KIKET BAY

KIKET BAY

KIKET BAY

KIKET BAY

KIKET BAY

KIKET BAY

KIKET BAY

KIKET BAY

KIKET BAY

KIKET BAY

KIKET BAY

KIKET BAY

KIKET BAY

KIKET BAY

KIKET BAY

KIKET BAY

KIKET BAY

KIKET BAY

KIKET BAY

KIKET BAY

KIKET BAY

KIKET BAY

KIKET BAY

KIKET BAY

KIKET BAY

KIKET BAY

KIKET BAY

GOV'T LOT 3

GOV'T LOT 3

GOV'T LOT 3

GOV'T LOT 3

GOV'T LOT 3

GOV'T LOT 3

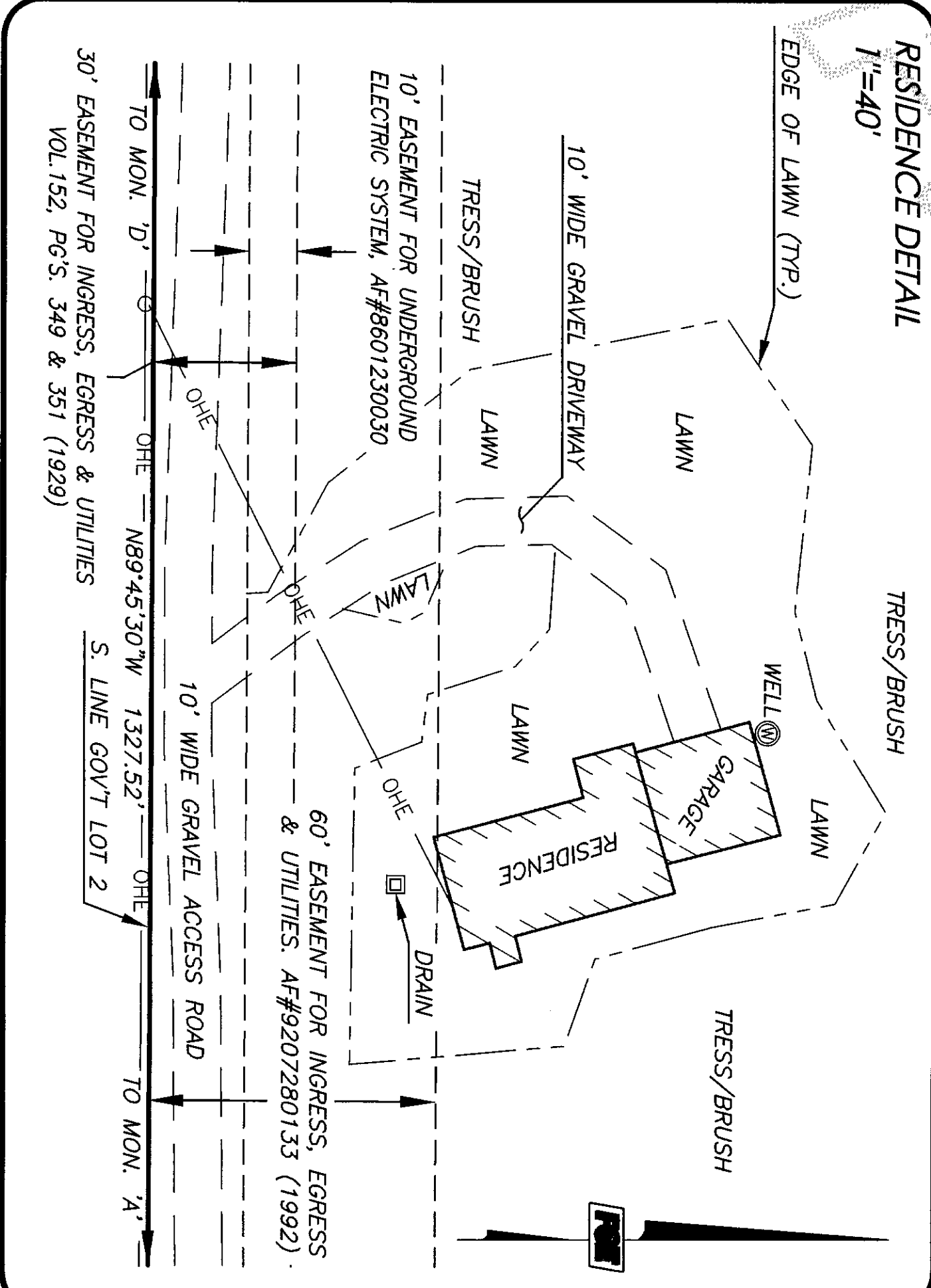
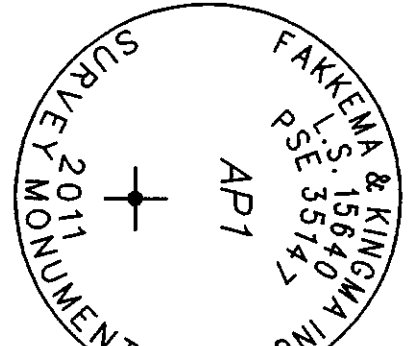
GOV'T LOT 3

GOV'T LOT 3

GOV'T LOT 3

GOV'T LOT 3

TYPICAL G.L.O. MEASUREMENT REFERENCES = [G.L.O. 1917]
[G.L.O. 1874]



GOV'T LOT 4

"KUKUTALI PRESERVE"
RECORD OF SURVEY
SWINOMISH TRIBAL COMMUNITY

DRAWN BY: RMT

CHECKED BY: PKB

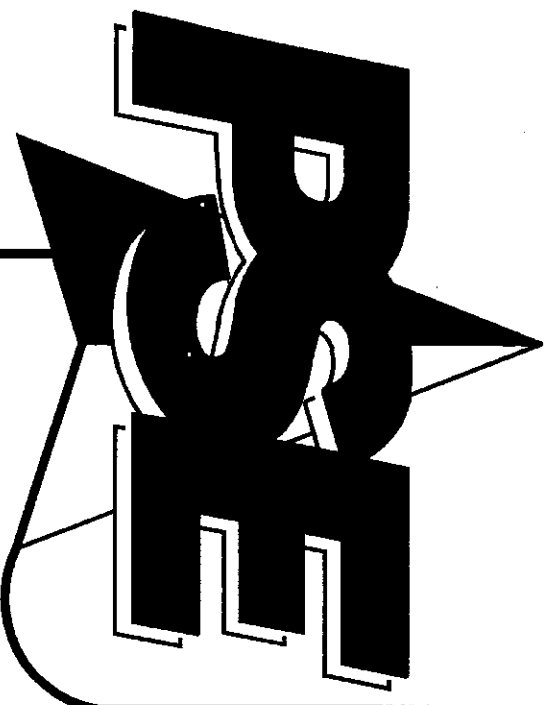
F.B.# 117 SERIES DATE: 03.22.12 JOB NO. 2011141

SHEET NO. 3 OF 6

DWG. NO. 2011141-SVX-ROS-Solid.dwg



2-23-12



PACIFIC SURVEY & ENGINEERING INC EMAIL: pse@psurvey.com
1812 CORNWALL AVE, BELLINGHAM, WA 98225 PHONE: 671.7387 FAX: 671.4685 www.psesurvey.com

RECORD OF SURVEY

SITUATE IN THE NE 1/4, NW 1/4, SE 1/4 & SW 1/4 OF SECTION 20 AND THE SW 1/4 OF SECTION 21,
TOWNSHIP 34 NORTH, RANGE 2 EAST, W.M., SKAGIT COUNTY, WASHINGTON

201203230030
Skagit County Auditor
3/23/2012 Page 4 of 6 9:37AM

SIMLK BAY

ORDINARY HIGH WATER MARK (OHWM)/EDGE OF BLUFF
PER 2011 ORTHO IMAGE (TYP)

GOV'T LOT 6

TYPICAL G.L.O. MEASUREMENT REFERENCES = [G.L.O. 1917]
[G.L.O. 1874]

GOV'T LOT 5

P-20576

GOV'T LOT 9

HEAVY TIMBER

P-20604

KIKET ISLAND

HEAVY TIMBER

GOV'T LOT 8

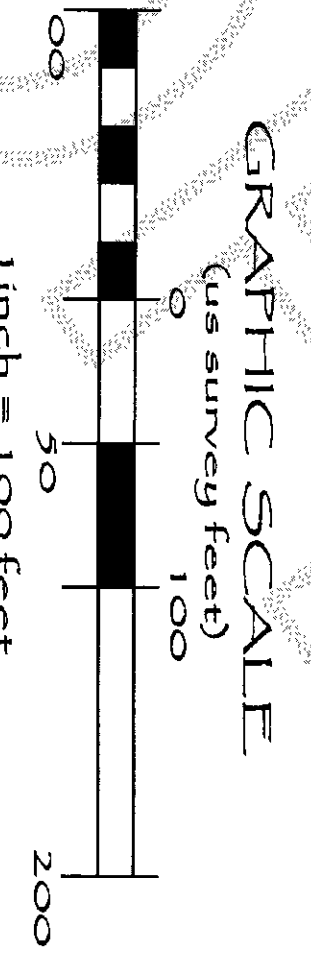
10' WIDE GRAVEL ROAD (TYP.)
KIKET ISLAND RD.
(PRIVATE)

FOUND 1/2" IRON PIPE WITH YELLOW PLASTIC CAP PLUG AND TACK, LS#15640
ON LINE

FOUND 1/2" IRON PIPE WITH YELLOW PLASTIC CAP PLUG AND TACK, LS#15640
ON LINE

FOUND 1/2" IRON PIPE WITH YELLOW PLASTIC CAP PLUG AND TACK, LS#15640
0.1' WEST OF GOV'T LOT LINE

KIKET BAY



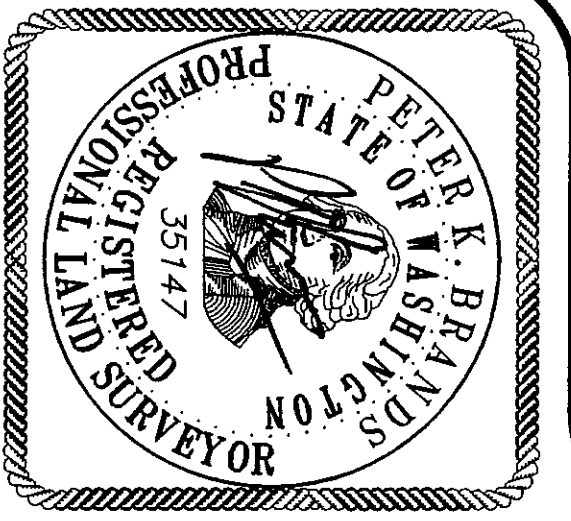
SEE SHEET 5

SEE SHEET 3

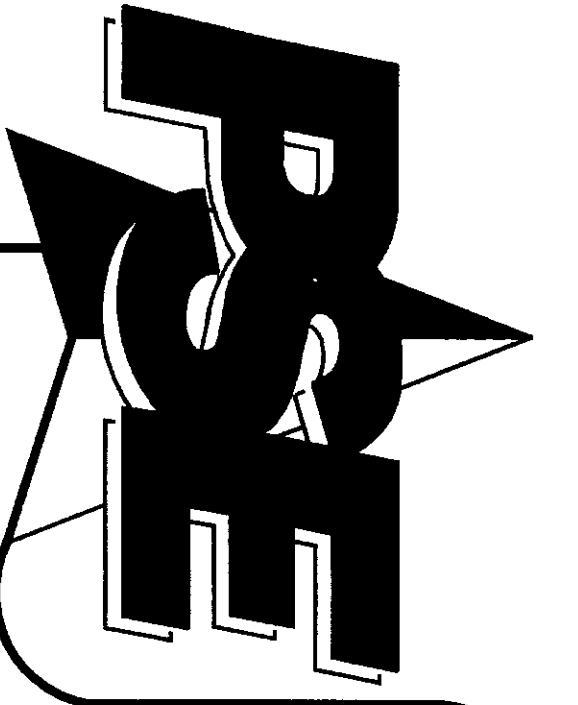
MEAN HIGH TIDE LINE PER B.L.M. DEPENDENT
RESURVEY AND SURVEY ACCEPTED SEPT. 2011

"KUKUTALI PRESERVE"
RECORD OF SURVEY
SWINOMISH TRIBAL COMMUNITY

DRAWN BY: RMT CHECKED BY: PKB F.B.# 117 SERIES DATE: 03.22.12 JOB NO. 2011141 SHEET NO. 4 OF 6 DWG. NO. 2011141-REV-ROS-Solid.dwg



5-23-12

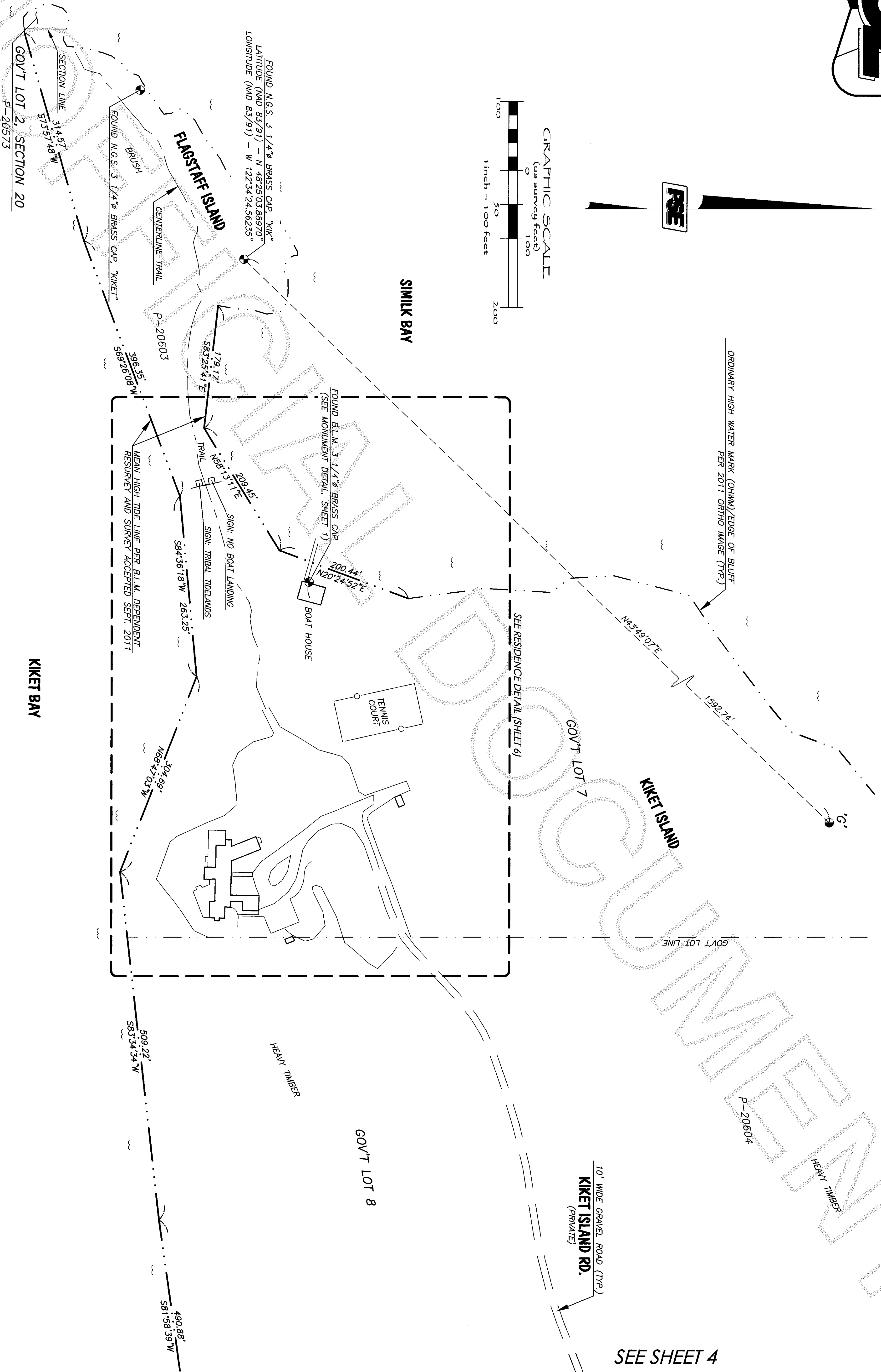
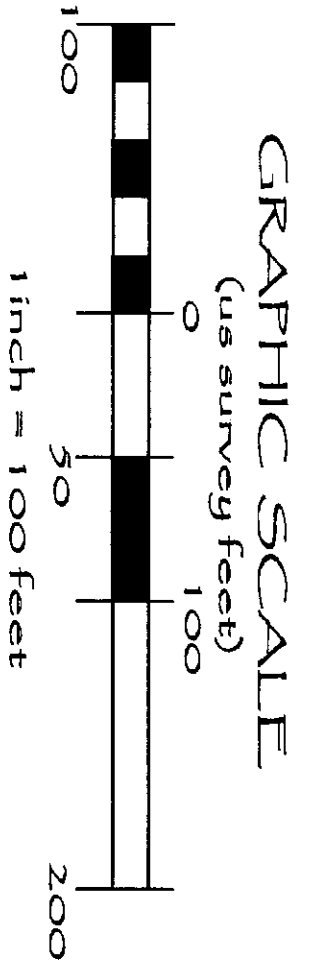


PACIFIC SURVEY & ENGINEERING INC EMAIL: pse@psurvey.com
1812 CORNWALL AVE, BELLINGHAM, WA 98225 PHONE: 671.7387 FAX: 671.4685 www.psurvey.com

RECORD OF SURVEY

SITUATE IN THE NE 1/4, NW 1/4, SE 1/4 & SW 1/4 OF SECTION 20 AND THE SW 1/4 OF SECTION 21,
TOWNSHIP 34 NORTH, RANGE 2 EAST, W.M., SKAGIT COUNTY, WASHINGTON

201203230030
Skagit County Auditor
3/23/2012, Page 5 of 6 9:37AM



SEE SHEET 4

"KUKUTALI PRESERVE"
RECORD OF SURVEY
SWINOMISH TRIBAL COMMUNITY

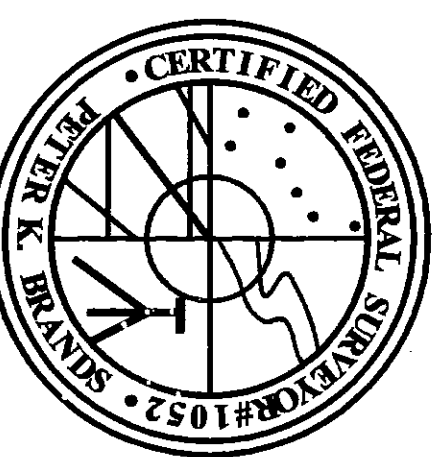
DRAWN BY: RWT

CHECKED BY: PKB

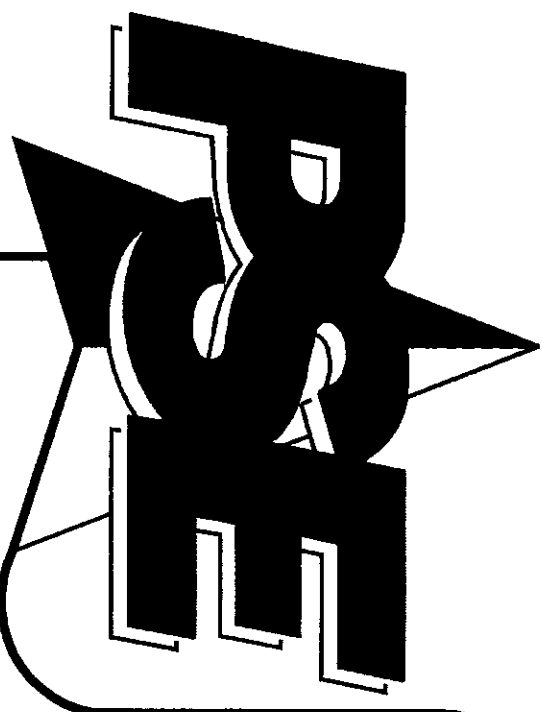
F.B.# 117 SERIES DATE: 03.22.12 JOB NO. 2011141

SHEET NO. 5 OF 6

DWG. NO. 2011141_svk_FOS_Solar.dwg



5-23-12

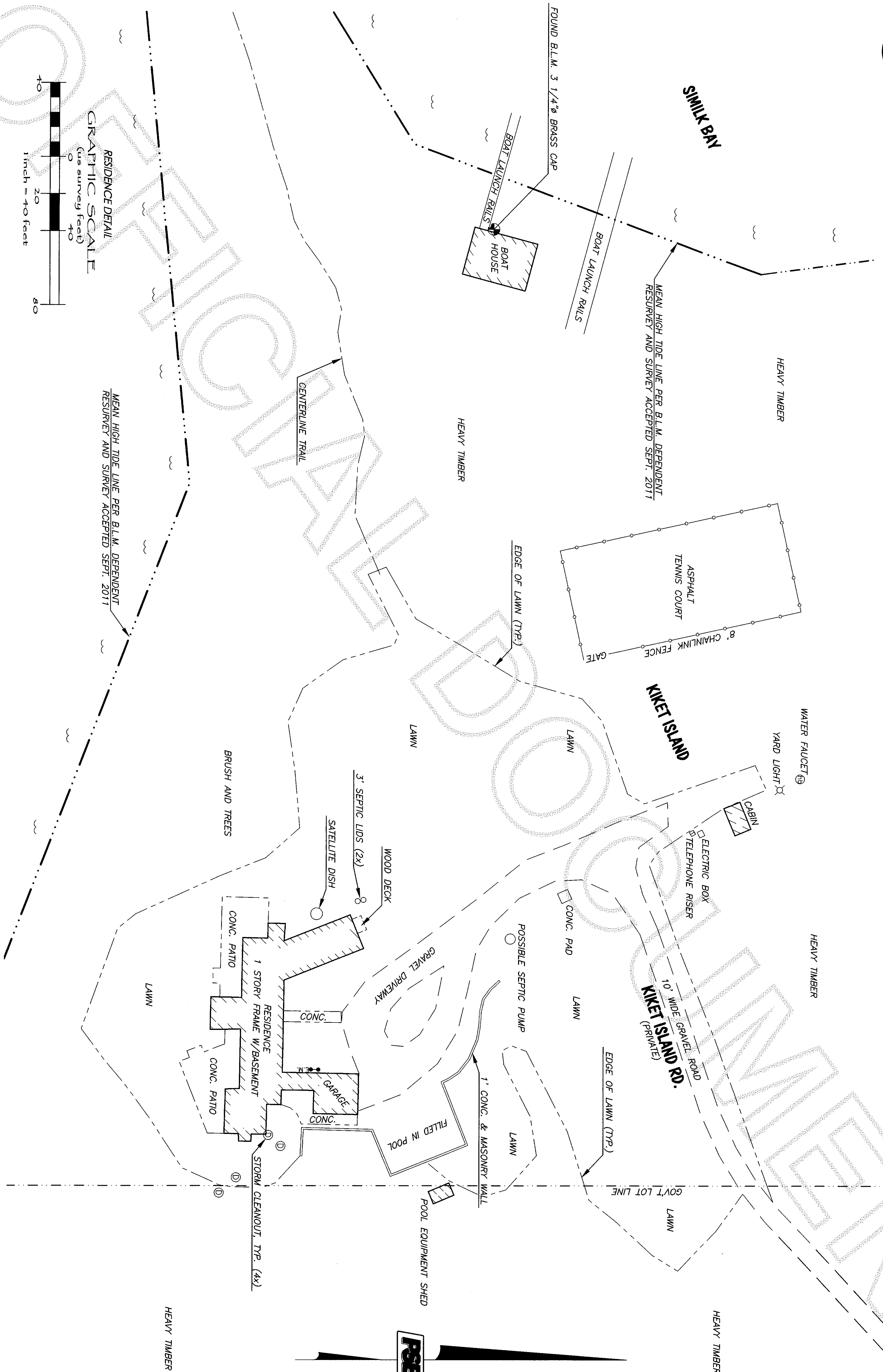


PACIFIC SURVEY & ENGINEERING INC EMAIL: pse@psurvey.com
1812 CORNWALL AVE, BELLINGHAM, WA 98225 PHONE:671.7387 FAX:671.4685 www.psurvey.com

RECORD OF SURVEY

SITUATE IN THE NE 1/4, NW 1/4, SE 1/4 & SW 1/4 OF SECTION 20 AND THE SW 1/4 OF SECTION 21,
TOWNSHIP 34 NORTH, RANGE 2 EAST, W.M., SKAGIT COUNTY, WASHINGTON

201203230030
Skagit County Auditor
3/23/2012, Page 6 of 6 9:37AM



"KUKUTALI PRESERVE" RECORD OF SURVEY SWINOMISH TRIBAL COMMUNITY

DRAWN BY: RMT

CHECKED BY: PKB

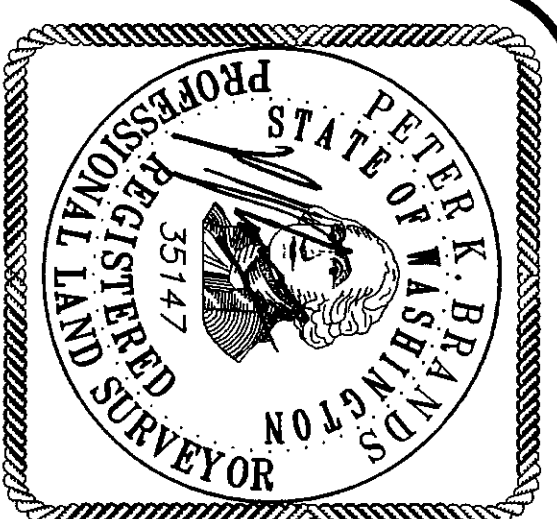
F.B.# 117 SERIES

DATE: 03.22.12

JOB NO. 2011141

SHEET NO. 6 OF 6

DWG. NO. 2011141_svx_ROS_Solar.dwg



3-23-12