

**SURVEYOR NARRATIVE**

SURVEY HISTORY IN THE AREA: SEE GLO RECORDS FOR ORIGINAL SURVEY INFO. 1984- SURVEY BY ELMER DUNN IN SECTIONS 28, 29, 30 & 31 IN TWP. 35N., R7E. FOR THE U.S. FOREST SERVICE, RECORDED UNDER A.F.# 841 001 0001. FOLLOWED BY HIS 1985 CERTIFICATE OF CORRECTION RECORDED UNDER A.F.# 8508280008. 1990 & 1993 SURVEYS OF SECTION 21 BY NORTHWEST SURVEYING RECORDED UNDER A.F.# 90030601 20 & 931 221 0094 RESPECTIVELY. 1996 SURVEY OF SECTION 21 BY THIS SURVEYOR RECORDED UNDER A.F.# 9609 100058. 1998 SURVEY OF SECTION 28 BY NORTHWEST SURVEYING RECORDED UNDER A.F.# 981 11 601 05. 2000 SURVEY OF SECTION 20 BY HAMPSTUR CORPORATION RECORDED UNDER A.F.# 200501 250003.

SURVEY DISCREPANCIES: ELMER DUNN'S SURVEY REPORTED FINDING A GLO MATCHING STUMP PATTERN AT THE SOUTH STANDARD 1/4 CORNER OF SECTION 21. THIS LOCATION MATCHED GLO NOTES WELL FOR DISTANCE FROM THE SW STANDARD CORNER OF SECTION 21, BUT WAS MORE THAN 200 FEET OFF OF THE GLO CORNER OF SECTION 21. THIS WAS MORE THAN 200 FEET OFF OF THE GLO CORNER OF SECTION 21. THIS WAS INTERESTINGLY THE ONLY CORNER IN HIS ENTIRE SURVEY THAT HE DID NOT MONUMENT. NO SCRIBING WAS NOTED. DUNN DID RELY ON THIS LOCATION TO CALCULATE AND ESTABLISH THE NW CLOSING CORNER OF SECTION 28. HE DID NOT FIND ANY ORIGINAL EVIDENCE THERE, BUT DID SET AN AL. MONUMENT AND NEW REFERENCES. NORTHWEST SURVEYING'S SECTION 21 SURVEYS DID NOT ACCEPT DUNN'S SOUTH STANDARD CORNER OF SECTION 21, CONSIDERED IT LOST AND ESTABLISHED THIS CORNER BY MODIFIED SINGLE PROPORTION, SETTING A MONUMENT. I ACCEPTED NORTHWEST SURVEYING'S SINGLE PROPORTION POSITION IN MY 1996 SURVEY OF SECTION 21. NORTHWEST SURVEYING'S 1996 SURVEY OF SECTION 28 AGAIN DID NOT ACCEPT DUNN'S POSITION FOR THE SOUTH STANDARD CORNER OF SECTION 21. HOWEVER, THEY DID ACCEPT THE DEPENDENT POSITION OF DUNN'S MONUMENT AT THE NW CLOSING CORNER OF SECTION 28 AND USED DUNN'S SURVEY TO THEN CALCULATE THE LOCATION OF THE WEST 1/4 CORNER OF SECTION 28. USING THE ABOVE SURVEYS, I WAS ABLE TO CALCULATE AN EXACT POSITION FOR DUNN'S SOUTH STANDARD CORNER OF SECTION 21. INSTEAD OF A 60° CEDAR BEARING TREE REPORTED BY GLO, I FOUND A 60° FIR STUMP WITH NO SCRIBING AND A POOR MATCH FOR DUNN'S SECOND REPORTED BT. AN 18" HEMLOCK STUMP. I FOUND NO EVIDENCE TO JUSTIFY DUNN'S POSITION AND ACCEPTED NORTHWEST SURVEYING'S SINGLE PROPORTION POSITION. THEREFORE, I DID NOT ACCEPT DUNN'S NW CLOSING CORNER OF SECTION 28 EITHER, AND CALCULATED A NEW PROPORTIONED POSITION FOR THIS CORNER. I TIED THE WEST 1/4 CORNER OF SECTION 28 AND FOUND THAT IT DIFFERED WITH NORTHWEST SURVEYING'S POSITION BY ABOUT 9 FEET. FOR THESE REASONS, THIS SURVEY'S SUBDIVISION OF SECTION 28 DIFFERS SLIGHTLY FROM NORTHWEST SURVEYING'S SUBDIVISION OF THE SAME. THE RESULTING DIFFERENCES ARE NOTED IN THE CORNER NOTE SECTION OF THIS SURVEY.

**CORNER NOTES**

- C1** WEST 1/4 CORNER SECTION 21: PD. CONC. MONIBRASS CAP. SEE LCR A.F.# 81 10300024.
- C2** SOUTHEAST STANDARD CORNER SECTION 21: AL. MONUMENT SET BY DUNN, 1 BT, 3 RFS.
- C3** NORTHWEST CLOSING CORNER SECTION 28: CALCULATED POSITION. DUNN'S MONUMENT BEARS 559-01-31 E, 21.18', NOT ACCEPTED. NW SURVEYING CALCULATED POSITION BEARS 588-25-11 E, 18.56', NOT ACCEPTED.
- C4** SOUTH STANDARD CORNER SECTION 21: FOUND NW SURVEYING I.P.CAP AT SINGLE PROPORTION POSITION. DUNN'S CALCULATED POSITION BEARS 559-01-08 E, 129.81', NOT ACCEPTED.
- C5** NORTH 1/4 CORNER SEC 28 ONLY: CALCULATED BY SINGLE PROPORTION. NW SURVEYING CALCULATED POSITION BEARS 588-19-10 E, 9.31'.
- C6** SOUTHEAST STANDARD CORNER SECTION 21: DUNN SET A USFS AL. MONUMENT. SEE DUNN'S SURVEY FOR DETAILS.
- C7** NORTHEAST CLOSING CORNER SECTION 28: DUNN SET USFS AL. MONUMENT. SEE DUNN'S SURVEY FOR DETAILS.
- C8** EAST 1/4 CORNER SECTION 28: DUNN SET USFS AL. MONUMENT. SEE DUNN'S SURVEY FOR DETAILS.
- C9** WEST 1/4 CORNER SECTION 28: FOUND USFS AL. MONUMENT, SET BY DUNN. SEE DUNN'S SURVEY FOR DETAILS.
- C10** EAST 1/16TH SOUTH LINE SECTION 20: FOUND HAMPSTUR AL. MONUMENT. SEE HAMPSTUR SURVEY FOR DETAILS.

**LEGAL DESCRIPTION**

JAMES AND TERRI COOK OWNERSHIP:  
THE SOUTH HALF OF THE NORTHWEST QUARTER OF SECTION 28, TOWNSHIP 35 NORTH, RANGE 7 EAST, W.M.

GRANDY LAKE FOREST ASSOCIATES, LLC OWNERSHIP:  
U.S. GOVERNMENT LOTS 2, 3 & 4: AND THE SOUTHWEST QUARTER OF THE NORTHEAST QUARTER, ALL IN SECTION 28, TOWNSHIP 35 NORTH, RANGE 7 EAST, W.M.

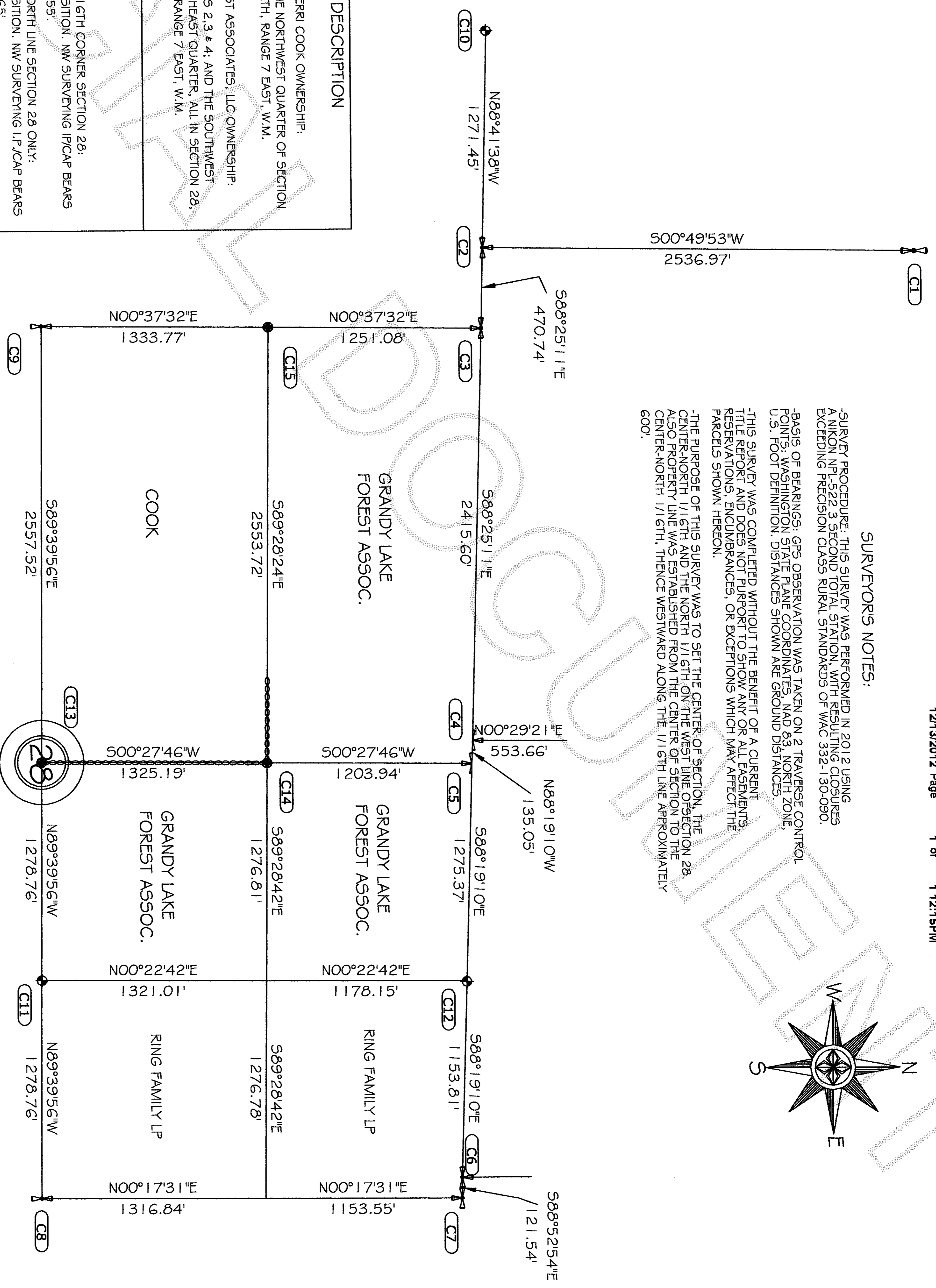
**SURVEYOR'S NOTES:**

-SURVEY PROCEDURE: THIS SURVEY WAS PERFORMED IN 2012 USING A NIKON NPL-522 3 SECOND TOTAL STATION WITH RESULTING CLOSURES EXCEEDING PRECISION CLASS RURAL STANDARDS OF VAC 332-130-090.

-BASIS OF BEARINGS: GPS OBSERVATION WAS TAKEN ON 2 TRAVERSE CONTROL POINTS: WASHINGTON STATE PLANE COORDINATES, NAD 83, NORTH ZONE, U.S. FOOT DEFINITION. DISTANCES SHOWN ARE GROUND DISTANCES.

-THIS SURVEY WAS COMPLETED WITHOUT THE BENEFIT OF A CURRENT TITLE REPORT AND DOES NOT PURPORT TO SHOW ANY OR ALL EASEMENTS, RESERVATIONS, ENCUMBRANCES, OR EXCEPTIONS WHICH MAY AFFECT THE PARCELS SHOWN HEREON.

-THE PURPOSE OF THIS SURVEY WAS TO SET THE CENTER OF SECTION, THE CENTER-NORTH 1/16TH AND THE NORTH 1/16TH OF THE WEST LINE OF SECTION 28. ALSO PROPERTY LINE WAS ESTABLISHED FROM THE CENTER OF SECTION TO THE CENTER-NORTH 1/16TH, THENCE WESTWARD ALONG THE 1/16TH LINE APPROXIMATELY 600'.



**SURVEYOR'S CERTIFICATE**

THIS MAP CORRECTLY REPRESENTS A SURVEY MADE UNDER MY DIRECTION IN CONFORMANCE WITH THE REQUIREMENTS OF THE SURVEY RECORDING ACT AT THE REQUEST OF GRANDY LAKE FOREST ASSOCIATES AND JAMES COOK.

FREDERIC P. PETERSEN CERT # 26303



**AUDITORS CERTIFICATE**

FILED FOR THE RECORD THIS 13 DAY OF Dec 2012 AT 12:15 IN BOOK OF SURVEYS ON PAGE 123 AT THE REQUEST OF FREDERIC P. PETERSEN, PLS.

AUDITORS FILE NO.: 2012-123008

**LEGEND:**

- ✚ DENOTES ACCEPTED GLO CONTROLLING CORNER POSITION.
- DENOTES PROPERTY CORNER SET BY THIS SURVEY.
- DENOTES PROPERTY CORNER SET DURING PREVIOUS SURVEY.
- DENOTES PROPERTY LINE MARKED BY THIS SURVEY

**PETERSEN LAND SURVEYING**

4525 KIOWA DRIVE  
MOUNT VERNON, WA, 98273  
PHONE: 360-333-9493

SCALE 1" = 500'

DRAWN BY: F.P.

SURVEY BY: F.P., C.K.

DATE: 12/10/2012

SHEET 1 OF 1