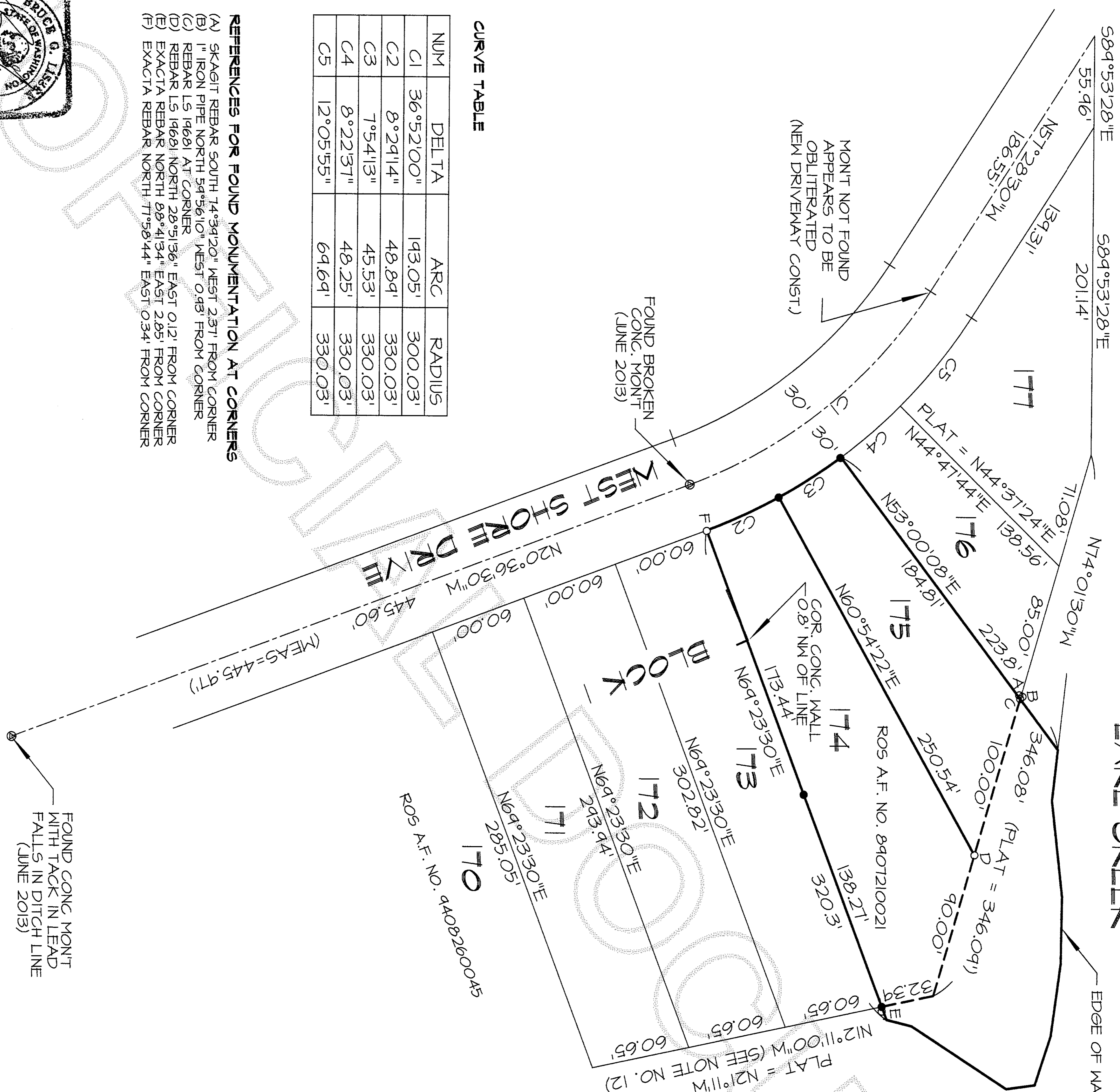


LAKE CREEK

EDGE OF WATER LOCATED JUNE 27, 2013



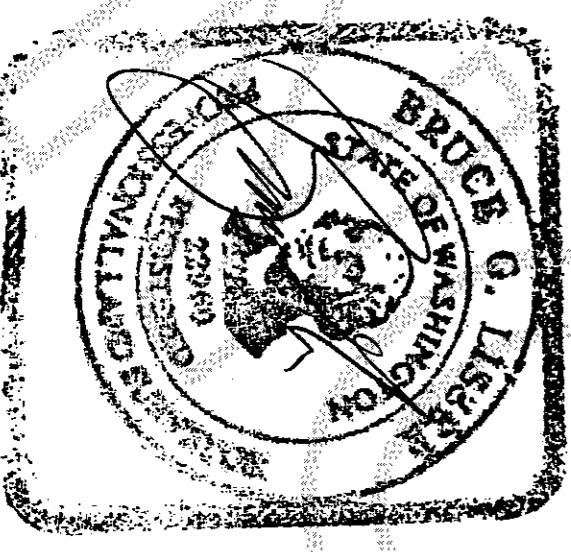
201307020046
Skagit County Auditor
7/2/2013 Page 2 of 2 9:13AM



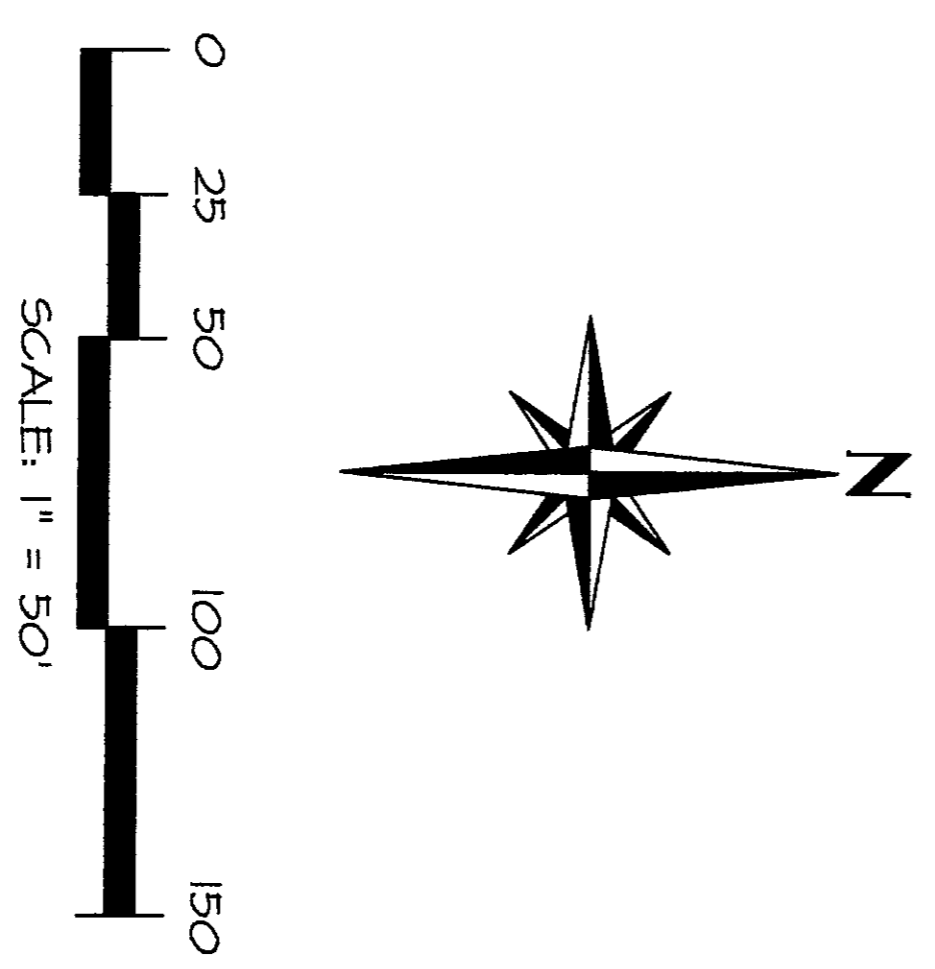
CURVE TABLE

| NUM | DELTA | ARC | RADIUS |
|-----|-----------|---------|---------|
| C1 | 36°52'00" | 143.05' | 300.03' |
| C2 | 8°29'14" | 48.89' | 330.03' |
| C3 | 7°54'13" | 45.53' | 330.03' |
| C4 | 8°22'37" | 48.25' | 330.03' |
| C5 | 12°05'55" | 69.69' | 330.03' |

- REFERENCES FOR FOUND MONUMENTATION AT CORNERS**
- (A) SKAGIT REBAR SOUTH 74°34'20" WEST 2.37' FROM CORNER
 - (B) 1" IRON PIPE NORTH 54°56'10" WEST 0.483' FROM CORNER
 - (C) REBAR L5 19681 AT CORNER
 - (D) REBAR L5 19681 NORTH 28°51'36" EAST 0.12' FROM CORNER
 - (E) EXACTA REBAR NORTH 89°41'34" EAST 2.85' FROM CORNER
 - (F) EXACTA REBAR NORTH 77°58'44" EAST 0.34' FROM CORNER



7-1-13



SHEET 2 OF 2

DATE: 7/01/13

SURVEY IN A PORTION OF THE SOUTH 1/2 OF SECTION 22, T. 33 N., R. 6 E., N.M. PLAT OF LAKE CAYANAUGH, DIV. 3 SKAGIT COUNTY, WASHINGTON FOR: NICOLA K. LESOURD

FB: 341 Pg: 8 LIGGER & ASSOCIATES, PLLC SCALE: 1"=50'
MERIDIAN: ASSUMED SURVEYING & LAND-USE CONSULTATION 13-043 B / BDRY
MOUNT VERNON, WA 98273 360-419-7442