

Return Name & Address:

\_\_\_\_\_  
\_\_\_\_\_  
\_\_\_\_\_



201604220097

Skagit County Auditor

\$74.00

4/22/2016 Page

1 of

2 1:01PM

SKAGIT COUNTY PLANNING & DEVELOPMENT SERVICES  
**REASONABLE USE EXCEPTION DETERMINATION**

Pursuant to SCC 14.16.850(4)(f)

File Number: PL16-0028


Applicant Name: Philip Black

Property Owner Name: same

Having reviewed the information provided by the applicant, the Department hereby finds that the lot bearing Skagit County Assessor Account Number(s) P-65867 has complied with the requirements of the Reasonable Use Exception pursuant to SCC 14.16.850(4)(f). A Reasonable Use Exception is hereby granted to consider residential development on the above referenced lot (see attached map for Exception boundaries).

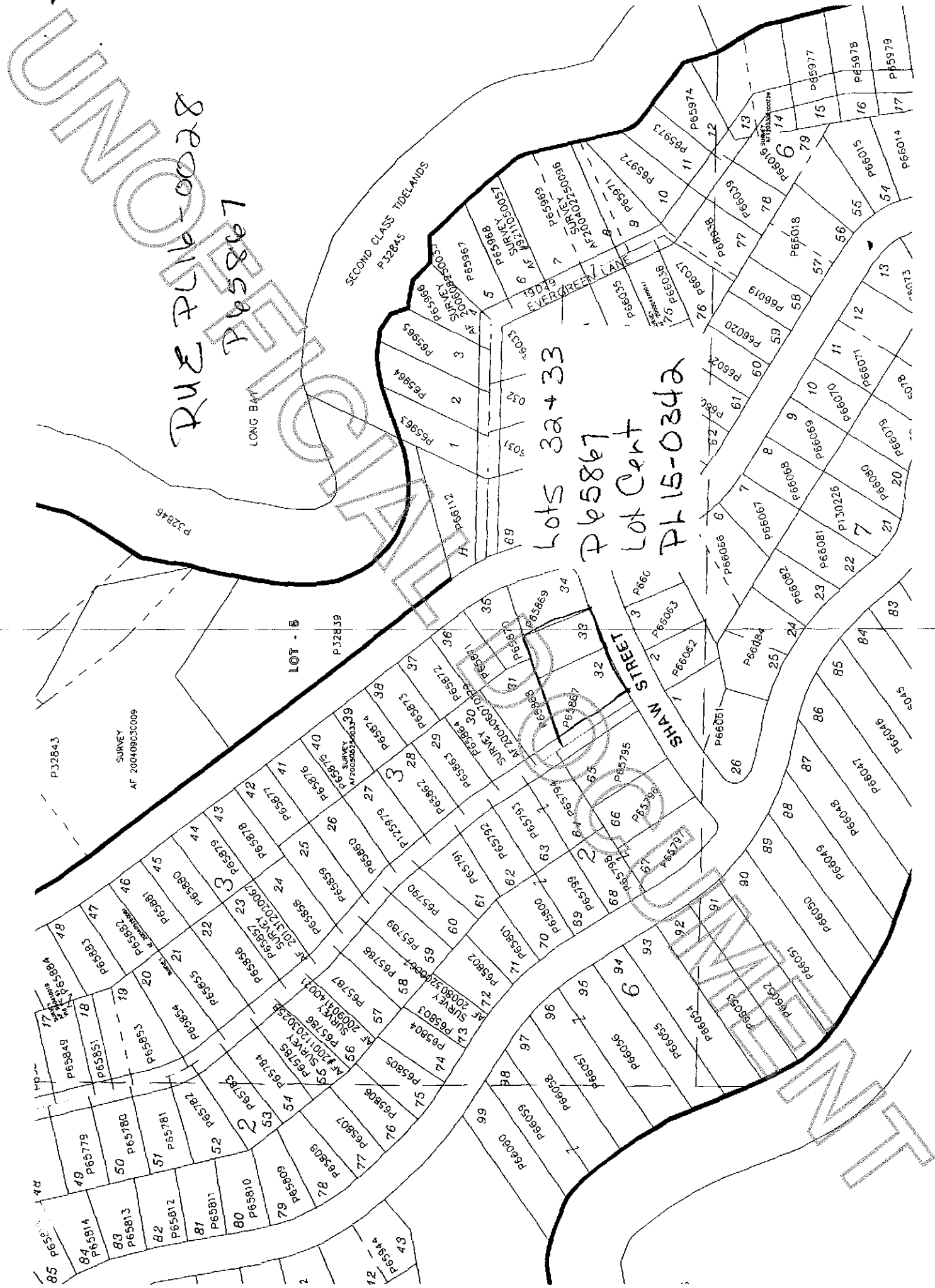
This approval does not guarantee that development permits(s) will be issued. Pursuant to SCC 14.16.850(4)(f), only residential uses that meet all applicable provisions of Skagit County Code and do not require the extension of urban services outside of an Urban Growth Area will be approved.

Parcel P65867; 3926-003-03.2-0019; Lots 32 & 33, Holiday Hideaway # 1, located within a portion of the SE ¼ of Section 8, Twp. 35, Rge 2; recorded in Vol. 8 of Plats, Pages 36 to 42, Records of Skagit County; AF 625483

Authorized Signature: 

Date: 4/21/2016

See Attached Map



PL 15-0342

PL 15-0342

PL 15-0342

PL 15-0342

PL 15-0342

PL 15-0342

PL 15-0342

PL 15-0342

PL 15-0342

PL 15-0342

PL 15-0342

PL 15-0342

LONG BAY

SECOND CLASS TIDELANDS  
P-32845

SHAW STREET

LOT - B

PL 15-0342

PL 15-0342

PL 15-0342

PL 15-0342

PL 15-0342

PL 15-0342

PL 15-0342

PL 15-0342

PL 15-0342

PL 15-0342

PL 15-0342

PL 15-0342

P65867

LOT - B

P32839

P32843

SURVEY  
AF 200409030009

P65874

P65875

P65876

P65877

P65878

P65879

P65880

P65881

P65882

P65883

P65884

P65885

P65886

P65887

P65888

P65889

P65890

P65891

P65892

P65893

P65894

P65895

P65896

P65885

P65886

P65887

P65888

P65889

P65890

P65891

P65892

P65893

P65894

P65895

P65896

P65897

P65898

P65899

P65900

P65901

P65902

P65903

P65904

P65905

P65885

P65886

P65887

P65888

P65889

P65890

P65891

P65892

P65893

P65894

P65895

P65896

P65897

P65898

P65899

P65900

P65901

P65902

P65903

P65904

P65905

P65885

P65886

P65887

P65888

P65889

P65890

P65891

P65892

P65893

P65894

P65895

P65896

P65897

P65898

P65899

P65900

P65901

P65902

P65903

P65904

P65905

P65885

P65886

P65887

P65888

P65889

P65890

P65891

P65892

P65893

P65894

P65895

P65896

P65897

P65898

P65899

P65900

P65901

P65902

P65903

P65904

P65905

P65885

P65886

P65887

P65888

P65889

P65890

P65891

P65892

P65893

P65894

P65895

P65896

P65897

P65898

P65899

P65900

P65901

P65902

P65903

P65904

P65905

P65885

P65886

P65887

P65888

P65889

P65890

P65891

P65892

P65893

P65894

P65895

P65896

P65897

P65898

P65899

P65900

P65901

P65902

P65903

P65904

P65905

P65885

P65886

P65887

P65888

P65889

P65890

P65891

P65892

P65893

P65894

P65895

P65896

P65897

P65898

P65899

P65900

P65901

P65902

P65903

P65904

P65905

P65885

P65886

P65887

P65888

P65889

P65890

P65891

P65892

P65893

P65894

P65895

P65896

P65897

P65898

P65899

P65900

P65901

P65902

P65903

P65904

P65905

P65885

P65886

P65887

P65888

P65889

P65890

P65891

P65892

P65893

P65894

P65895

P65896

P65897

P65898

P65899

P65900

P65901

P65902

P65903

P65904

P65905

P65885

P65886

P65887

P65888

P65889

P65890

P65891

P65892

P65893

P65894

P65895

P65896

P65897

P65898

P65899

P65900

P65901

P65902

P65903

P65904

P65905

PL 15-0342

PL 15-0342

PL 15-0342

PL 15-0342

PL 15-0342

PL 15-0342

PL 15-0342

PL 15-0342

PL 15-0342

PL 15-0342

PL 15-0342

PL 15-0342

LONG BAY

SECOND CLASS TIDELANDS  
P-32845

SHAW STREET

LOT - B

P32843

SURVEY  
AF 200409030009

P65874

P65875

P65876

P65877

P65878

P65879

P65880

P65881

P65882

P65883

P65884

P65885

P65886

P65887

P65888

P65889

P65890

P65891

P65892

P65893

P65894

P65895

P65896

P65885

P65886

P65887

P65888