

**SURVEY DESCRIPTION**

GOVERNMENT LOT 4, SECTION 36, TOWNSHIP 36 NORTH, RANGE 2 EAST, WM, LEES COUNTY ROAD, SITUATE IN SKAGIT COUNTY, WASHINGTON. EXCEPT RIGHT-OF-WAY FOR THE COUNTY ROAD KNOWN AS ROYER ROAD ALONG THE WEST LINE THEREOF;  
 ALSO EXCEPT THE RIGHT-OF-WAY FOR THE COUNTY ROAD KNOWN AS SAMISH ISLAND ROAD ACROSS A SOUTHERLY PORTION OF THE SUBJECT PROPERTY; AND FURTHER EXCEPT THAT PORTION THEREOF CONVERTED TO SKAGIT COUNTY FOR SAID SAMISH ISLAND ROAD BY DEED RECORDED AS ADDITORS' FILE NO. 16515 AND DESCRIBED AS FOLLOWS:  
 A STRIP OF LAND IN GOVERNMENT LOT 4 OF SECTION 36, TOWNSHIP 36 NORTH, RANGE 2 EAST, WM, BEING 25 FEET IN WIDTH AND LYING ON THE NORTHERLY SIDE ADJACENT TO AND PARALLEL WITH THE FOLLOWING DESCRIBED LINE:  
 BEGINNING AT THE SOUTHEAST CORNER OF THE ABOVE DESCRIBED SUBDIVISION;  
 THENCE NORTH 131.00° WEST ALONG THE EAST LINE OF SAID GOVERNMENT LOT 4, 436.34 FEET TO A POINT ON THE CENTRAL LINE OF A CURVE TO THE RIGHT IN SAID GOVERNMENT LOT 4, 152.36 FEET IN RADIUS, BEARING S 89° 41' 50" WEST 105° 43' 33" TO THE POINT OF CURVATURE OF A 2° CURVE TO THE RIGHT;  
 THENCE FOLLOWING SAID 2° CURVE TO THE RIGHT, 1403.93 FEET TO A POINT ON THE WEST LINE OF SAID GOVERNMENT LOT 4, 152.36 FEET IN RADIUS, BEARING N 89° 41' 50" WEST 105° 43' 33" TO SAID CORNER OF SAID LOT 4, THE TANGENT TO SAID POINT BEARS SOUTH 86° 36' 28" WEST.

SUBJECT TO AND TOGETHER WITH EASEMENTS, RESERVATIONS, RESTRICTIONS, COVENANTS, LEAS, LEASES, COURT CAUSES AND OTHER INSTRUMENTS OF RECORD.  
 SITUATE IN THE COUNTY OF SKAGIT, STATE OF WASHINGTON.



**SURVEYORS CERTIFICATE**

I HEREBY CERTIFY THAT THIS SHORT PLAT SUBDIVISION IS BASED ON AN ACTUAL SURVEY, WHICH IS RETRACEABLE AND BASED ON A TRUE SUBDIVISION OF THE SECTION, THAT THE DISTANCES, COURSES, AND ANGLES ARE SHOWN HEREON ACCORDS WITH THE SHORT PLAT SUBDIVISION IN ACCORDANCE WITH THE PROVISIONS CONTAINED IN CHAPTER 352-120-040, RCW.

DATE: Feb 27, 2019  
 BRUCE G. LIGER, P.L.S., CERTIFICATE NO. 22160  
 LIGER & ASSOCIATES, PLLC  
 1000 PULLMANER ST, PO BOX 104  
 BURLINGAME, WA 98148  
 PHONE: (360) 418-1442  
 FAX: (360) 418-0561  
 E-MAIL: BRUCE@LIGER.COM

**APPROVALS**

THE WITHIN AND FOREGOING SHORT PLAT SUBDIVISION IS APPROVED IN ACCORDANCE WITH THE PROVISIONS OF THE SKAGIT COUNTY CODE (SCC) 14.16.060 AND SCC 14.18 ON THIS 27th DAY OF February, 2019.

Neil H. Bly  
 SHORT PLAT ADMINISTRATOR

Rebecca Kelly  
 SKAGIT COUNTY ENGINEER

THE WITHIN AND FOREGOING SHORT PLAT IS APPROVED IN ACCORDANCE WITH THE PROVISIONS OF THE SKAGIT COUNTY CODE TITLE 12.09.100, SITE BARRING § 12.09.100(5) THIS 27th DAY OF February, 2019.

Heather Lago  
 SKAGIT COUNTY HEALTH OFFICER  
 TREASURER'S CERTIFICATE

THIS IS TO CERTIFY THAT ALL TAXES HERETOFORE LEVIED AND WHICH HAVE NOT BEEN PAID AND DISCHARGED ACCORDING TO THE RECORDS OF THE OFFICE UP TO AND INCLUDING THE YEAR OF 2018.

T. Madson  
 SKAGIT COUNTY TREASURER  
 FOR: SHIRLEY OLIVSON

DATE: 2/15/19



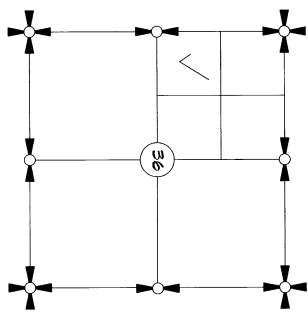
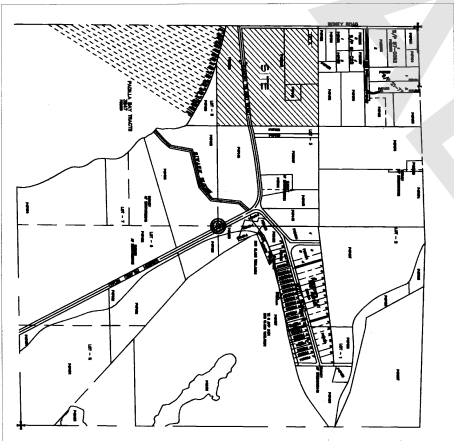
**AUDITOR'S CERTIFICATE**

FILED FOR AT THE REQUEST OF LIGER & ASSOCIATES, PLLC.

FILED FOR RECORD THIS 15th DAY OF Feb, 2019 AT 11 MINUTES PAST 2 O'CLOCK P.M. IN VOLUME 2019-048 OF SHORT PLATS ON PAGES 1-2 UNDER AUDITORS' FILE NO. 801902150064  
 RECORDS OF SKAGIT COUNTY, WASHINGTON.

Barbara Pelican  
 SKAGIT COUNTY AUDITOR

Devin Brown  
 DEPUTY



SECTION 36, TOWNSHIP 36 NORTH, RANGE 2 EAST, WM, VICINITY MAP

SHEET 1 OF 4		DATE: <u>2/27/19</u>
SKAGIT COUNTY SHORT PLAT NO. PL-18-0485		
SURVEY IN A PORTION OF THE GOVERNMENT LOT 4, SECTION 36, TOWNSHIP 36 NORTH, RANGE 2 EAST, WM, SKAGIT COUNTY, WASHINGTON		
FOR: THE SAMISH FLOWER FARM LIMITED PARTNERSHIP		
BY:	PLC	LIGER & ASSOCIATES, PLLC
FOR:	PLC	SCAL
PREPARED BY:	PLC	SCAL
REVISION:	PLC	SCAL
DATE:	PLC	SCAL
BY:	PLC	SCAL
FOR:	PLC	SCAL
PREPARED BY:	PLC	SCAL
REVISION:	PLC	SCAL
DATE:	PLC	SCAL
BY:	PLC	SCAL
FOR:	PLC	SCAL
PREPARED BY:	PLC	SCAL
REVISION:	PLC	SCAL
DATE:	PLC	SCAL
BY:	PLC	SCAL
FOR:	PLC	SCAL
PREPARED BY:	PLC	SCAL
REVISION:	PLC	SCAL
DATE:	PLC	SCAL
BY:	PLC	SCAL
FOR:	PLC	SCAL
PREPARED BY:	PLC	SCAL
REVISION:	PLC	SCAL
DATE:	PLC	SCAL
BY:	PLC	SCAL
FOR:	PLC	SCAL
PREPARED BY:	PLC	SCAL
REVISION:	PLC	SCAL
DATE:	PLC	SCAL
BY:	PLC	SCAL
FOR:	PLC	SCAL
PREPARED BY:	PLC	SCAL
REVISION:	PLC	SCAL
DATE:	PLC	SCAL
BY:	PLC	SCAL
FOR:	PLC	SCAL
PREPARED BY:	PLC	SCAL
REVISION:	PLC	SCAL
DATE:	PLC	SCAL
BY:	PLC	SCAL
FOR:	PLC	SCAL
PREPARED BY:	PLC	SCAL
REVISION:	PLC	SCAL
DATE:	PLC	SCAL
BY:	PLC	SCAL
FOR:	PLC	SCAL
PREPARED BY:	PLC	SCAL
REVISION:	PLC	SCAL
DATE:	PLC	SCAL
BY:	PLC	SCAL
FOR:	PLC	SCAL
PREPARED BY:	PLC	SCAL
REVISION:	PLC	SCAL
DATE:	PLC	SCAL
BY:	PLC	SCAL
FOR:	PLC	SCAL
PREPARED BY:	PLC	SCAL
REVISION:	PLC	SCAL
DATE:	PLC	SCAL
BY:	PLC	SCAL
FOR:	PLC	SCAL
PREPARED BY:	PLC	SCAL
REVISION:	PLC	SCAL
DATE:	PLC	SCAL
BY:	PLC	SCAL
FOR:	PLC	SCAL
PREPARED BY:	PLC	SCAL
REVISION:	PLC	SCAL
DATE:	PLC	SCAL
BY:	PLC	SCAL
FOR:	PLC	SCAL
PREPARED BY:	PLC	SCAL
REVISION:	PLC	SCAL
DATE:	PLC	SCAL
BY:	PLC	SCAL
FOR:	PLC	SCAL
PREPARED BY:	PLC	SCAL
REVISION:	PLC	SCAL
DATE:	PLC	SCAL
BY:	PLC	SCAL
FOR:	PLC	SCAL
PREPARED BY:	PLC	SCAL
REVISION:	PLC	SCAL
DATE:	PLC	SCAL
BY:	PLC	SCAL
FOR:	PLC	SCAL
PREPARED BY:	PLC	SCAL
REVISION:	PLC	SCAL
DATE:	PLC	SCAL
BY:	PLC	SCAL
FOR:	PLC	SCAL
PREPARED BY:	PLC	SCAL
REVISION:	PLC	SCAL
DATE:	PLC	SCAL
BY:	PLC	SCAL
FOR:	PLC	SCAL
PREPARED BY:	PLC	SCAL
REVISION:	PLC	SCAL
DATE:	PLC	SCAL
BY:	PLC	SCAL
FOR:	PLC	SCAL
PREPARED BY:	PLC	SCAL
REVISION:	PLC	SCAL
DATE:	PLC	SCAL
BY:	PLC	SCAL
FOR:	PLC	SCAL
PREPARED BY:	PLC	SCAL
REVISION:	PLC	SCAL
DATE:	PLC	SCAL
BY:	PLC	SCAL
FOR:	PLC	SCAL
PREPARED BY:	PLC	SCAL
REVISION:	PLC	SCAL
DATE:	PLC	SCAL
BY:	PLC	SCAL
FOR:	PLC	SCAL
PREPARED BY:	PLC	SCAL
REVISION:	PLC	SCAL
DATE:	PLC	SCAL
BY:	PLC	SCAL
FOR:	PLC	SCAL
PREPARED BY:	PLC	SCAL
REVISION:	PLC	SCAL
DATE:	PLC	SCAL
BY:	PLC	SCAL
FOR:	PLC	SCAL
PREPARED BY:	PLC	SCAL
REVISION:	PLC	SCAL
DATE:	PLC	SCAL
BY:	PLC	SCAL
FOR:	PLC	SCAL
PREPARED BY:	PLC	SCAL
REVISION:	PLC	SCAL
DATE:	PLC	SCAL
BY:	PLC	SCAL
FOR:	PLC	SCAL
PREPARED BY:	PLC	SCAL
REVISION:	PLC	SCAL
DATE:	PLC	SCAL
BY:	PLC	SCAL
FOR:	PLC	SCAL
PREPARED BY:	PLC	SCAL
REVISION:	PLC	SCAL
DATE:	PLC	SCAL
BY:	PLC	SCAL
FOR:	PLC	SCAL
PREPARED BY:	PLC	SCAL
REVISION:	PLC	SCAL
DATE:	PLC	SCAL
BY:	PLC	SCAL
FOR:	PLC	SCAL
PREPARED BY:	PLC	SCAL
REVISION:	PLC	SCAL
DATE:	PLC	SCAL
BY:	PLC	SCAL
FOR:	PLC	SCAL
PREPARED BY:	PLC	SCAL
REVISION:	PLC	SCAL
DATE:	PLC	SCAL
BY:	PLC	SCAL
FOR:	PLC	SCAL
PREPARED BY:	PLC	SCAL
REVISION:	PLC	SCAL
DATE:	PLC	SCAL
BY:	PLC	SCAL
FOR:	PLC	SCAL
PREPARED BY:	PLC	SCAL
REVISION:	PLC	SCAL
DATE:	PLC	SCAL
BY:	PLC	SCAL
FOR:	PLC	SCAL
PREPARED BY:	PLC	SCAL
REVISION:	PLC	SCAL
DATE:	PLC	SCAL
BY:	PLC	SCAL
FOR:	PLC	SCAL
PREPARED BY:	PLC	SCAL
REVISION:	PLC	SCAL
DATE:	PLC	SCAL
BY:	PLC	SCAL
FOR:	PLC	SCAL
PREPARED BY:	PLC	SCAL
REVISION:	PLC	SCAL
DATE:	PLC	SCAL
BY:	PLC	SCAL
FOR:	PLC	SCAL
PREPARED BY:	PLC	SCAL
REVISION:	PLC	SCAL
DATE:	PLC	SCAL
BY:	PLC	SCAL
FOR:	PLC	SCAL
PREPARED BY:	PLC	SCAL
REVISION:	PLC	SCAL
DATE:	PLC	SCAL
BY:	PLC	SCAL
FOR:	PLC	SCAL
PREPARED BY:	PLC	SCAL
REVISION:	PLC	SCAL
DATE:	PLC	SCAL
BY:	PLC	SCAL
FOR:	PLC	SCAL
PREPARED BY:	PLC	SCAL
REVISION:	PLC	SCAL
DATE:	PLC	SCAL
BY:	PLC	SCAL
FOR:	PLC	SCAL
PREPARED BY:	PLC	SCAL
REVISION:	PLC	SCAL
DATE:	PLC	SCAL
BY:	PLC	SCAL
FOR:	PLC	SCAL
PREPARED BY:	PLC	SCAL
REVISION:	PLC	SCAL
DATE:	PLC	SCAL
BY:	PLC	SCAL
FOR:	PLC	SCAL
PREPARED BY:	PLC	SCAL
REVISION:	PLC	SCAL
DATE:	PLC	SCAL
BY:	PLC	SCAL
FOR:	PLC	SCAL
PREPARED BY:	PLC	SCAL
REVISION:	PLC	SCAL
DATE:	PLC	SCAL
BY:	PLC	SCAL
FOR:	PLC	SCAL
PREPARED BY:	PLC	SCAL
REVISION:	PLC	SCAL
DATE:	PLC	SCAL
BY:	PLC	SCAL
FOR:	PLC	SCAL
PREPARED BY:	PLC	SCAL
REVISION:	PLC	SCAL
DATE:	PLC	SCAL
BY:	PLC	SCAL
FOR:	PLC	SCAL
PREPARED BY:	PLC	SCAL
REVISION:	PLC	SCAL
DATE:	PLC	SCAL
BY:	PLC	SCAL
FOR:	PLC	SCAL
PREPARED BY:	PLC	SCAL
REVISION:	PLC	SCAL
DATE:	PLC	SCAL
BY:	PLC	SCAL
FOR:	PLC	SCAL
PREPARED BY:	PLC	SCAL
REVISION:	PLC	SCAL
DATE:	PLC	SCAL
BY:	PLC	SCAL
FOR:	PLC	SCAL
PREPARED BY:	PLC	SCAL
REVISION:	PLC	SCAL
DATE:	PLC	SCAL
BY:	PLC	SCAL
FOR:	PLC	SCAL
PREPARED BY:	PLC	SCAL
REVISION:	PLC	SCAL
DATE:	PLC	SCAL
BY:	PLC	SCAL
FOR:	PLC	SCAL
PREPARED BY:	PLC	SCAL
REVISION:	PLC	SCAL
DATE:	PLC	SCAL
BY:	PLC	SCAL
FOR:	PLC	SCAL
PREPARED BY:	PLC	SCAL
REVISION:	PLC	SCAL
DATE:	PLC	SCAL
BY:	PLC	SCAL
FOR:	PLC	SCAL
PREPARED BY:	PLC	SCAL
REVISION:	PLC	SCAL
DATE:	PLC	SCAL
BY:	PLC	SCAL
FOR:	PLC	SCAL
PREPARED BY:	PLC	SCAL
REVISION:	PLC	SCAL
DATE:	PLC	SCAL
BY:	PLC	SCAL
FOR:	PLC	SCAL
PREPARED BY:	PLC	SCAL
REVISION:	PLC	SCAL
DATE:	PLC	SCAL
BY:	PLC	SCAL
FOR:	PLC	SCAL
PREPARED BY:	PLC	SCAL
REVISION:	PLC	SCAL
DATE:	PLC	SCAL
BY:	PLC	SCAL
FOR:	PLC	SCAL
PREPARED BY:	PLC	SCAL
REVISION:	PLC	SCAL
DATE:	PLC	SCAL
BY:	PLC	SCAL
FOR:	PLC	SCAL
PREPARED BY:	PLC	SCAL
REVISION:	PLC	SCAL
DATE:	PLC	SCAL
BY:	PLC	SCAL
FOR:	PLC	SCAL
PREPARED BY:	PLC	SCAL
REVISION:	PLC	SCAL
DATE:	PLC	SCAL
BY:	PLC	SCAL
FOR:	PLC	SCAL
PREPARED BY:	PLC	SCAL
REVISION:	PLC	SCAL
DATE:	PLC	SCAL
BY:	PLC	SCAL
FOR:	PLC	SCAL
PREPARED BY:	PLC	SCAL

**CONSENT AND DEDICATION**

KNOW ALL MEN BY THESE PRESENTS THAT THE UNDERIGNED OWNERS OF THE LAND INCLUDED WITHIN THIS SHORT PLAT DO HEREBY CERTIFY THAT THE REGION TO MAKE THIS SHORT PLAT HAS OUR FREE AND VOLUNTARY ACT AND CONSENT AND APPROVAL AND THAT WE HAVE NO OTHER INTERESTS IN THE STREETS AND AVENUES SHOWN HEREON AND THE USE THEREOF FOR ALL PUBLIC PURPOSES NOT INCONSISTENT WITH THE USE THEREOF FOR PUBLIC HIGHWAY PURPOSES, ALSO THE RIGHT TO MAKE ALL NECESSARY SLOPES FOR CUTS AND FILLS UPON THE LOTS AND BLOCKS SHOWN ON THIS SHORT PLAT AND TO MAKE ANY NECESSARY GRADINGS OF SAID STREETS AND AVENUES SHOWN HEREON.

IN WITNESS WHEREOF, WE HAVE HERETO SET OUR HANDS AND SEALS THIS 2 DAY OF JANUARY, 2019.

THE SAMSUIH FLOWER FARM LIMITED PARTNERSHIP

BY: David E. Dunphy BY: Sarah K. Hunt  
TITLE: Executive Director TITLE: General Partnership

BY: Stacy M. Rie  
TITLE: General Partnership

WASHINGTON NATIONAL BANK A WASHINGTON CORPORATION

BY: \_\_\_\_\_  
TITLE: \_\_\_\_\_

SKAGIT COUNTY WHICH IS A POLITICAL SUBDIVISION OF THE STATE OF WASHINGTON

BY: \_\_\_\_\_  
TITLE: \_\_\_\_\_

**ACKNOWLEDGEMENTS**

STATE OF \_\_\_\_\_  
COUNTY OF \_\_\_\_\_

I CERTIFY THAT I KNOW OR HAVE SATISFACTORY EVIDENCE THAT HE/HEN/ET/HEY HAS/ARE AUTHORIZED TO EXECUTE THE INSTRUMENT AND ACKNOWLEDGE IT AS THE \_\_\_\_\_ OF \_\_\_\_\_ TO BE THE FREE AND VOLUNTARY ACT OF SUCH PARTY FOR THE USES AND PURPOSES MENTIONED IN THE INSTRUMENT.  
DATED: \_\_\_\_\_

SIGNATURE \_\_\_\_\_  
NOTARY PUBLIC  
MY APPOINTMENT EXPIRES \_\_\_\_\_  
RESIDING AT \_\_\_\_\_

STATE OF \_\_\_\_\_  
COUNTY OF \_\_\_\_\_

I CERTIFY THAT I KNOW OR HAVE SATISFACTORY EVIDENCE THAT HE/HEN/ET/HEY HAS/ARE AUTHORIZED TO EXECUTE THE INSTRUMENT AND ACKNOWLEDGE IT AS THE \_\_\_\_\_ OF THE SAMSUIH FLOWER FARM LIMITED PARTNERSHIP TO BE THE FREE AND VOLUNTARY ACT OF SUCH PARTY FOR THE USES AND PURPOSES MENTIONED IN THE INSTRUMENT.  
DATED: \_\_\_\_\_

SIGNATURE \_\_\_\_\_  
NOTARY PUBLIC  
MY APPOINTMENT EXPIRES \_\_\_\_\_  
RESIDING AT \_\_\_\_\_

STATE OF Washington  
COUNTY OF Skagit

I CERTIFY THAT I KNOW OR HAVE SATISFACTORY EVIDENCE THAT HE/HEN/ET/HEY HAS/ARE AUTHORIZED TO EXECUTE THE INSTRUMENT AND ACKNOWLEDGE IT AS THE \_\_\_\_\_ OF \_\_\_\_\_ TO BE THE FREE AND VOLUNTARY ACT OF SUCH PARTY FOR THE USES AND PURPOSES MENTIONED IN THE INSTRUMENT.  
DATED: 1-2-19

SIGNATURE Jane Zilic  
NOTARY PUBLIC  
MY APPOINTMENT EXPIRES 3-10-23  
RESIDING AT 3-10-23 Skagitville WA

STATE OF Washington  
COUNTY OF Skagit

I CERTIFY THAT I KNOW OR HAVE SATISFACTORY EVIDENCE THAT HE/HEN/ET/HEY HAS/ARE AUTHORIZED TO EXECUTE THE INSTRUMENT AND ACKNOWLEDGE IT AS THE \_\_\_\_\_ OF \_\_\_\_\_ TO BE THE FREE AND VOLUNTARY ACT OF SUCH PARTY FOR THE USES AND PURPOSES MENTIONED IN THE INSTRUMENT.  
DATED: 1-2-19

SIGNATURE Jane Zilic  
NOTARY PUBLIC  
MY APPOINTMENT EXPIRES 3-10-23  
RESIDING AT 3-10-23 Skagitville WA

STATE OF Washington  
COUNTY OF Skagit

I CERTIFY THAT I KNOW OR HAVE SATISFACTORY EVIDENCE THAT HE/HEN/ET/HEY HAS/ARE AUTHORIZED TO EXECUTE THE INSTRUMENT AND ACKNOWLEDGE IT AS THE \_\_\_\_\_ OF \_\_\_\_\_ TO BE THE FREE AND VOLUNTARY ACT OF SUCH PARTY FOR THE USES AND PURPOSES MENTIONED IN THE INSTRUMENT.  
DATED: 1-2-19

SIGNATURE Jane Zilic  
NOTARY PUBLIC  
MY APPOINTMENT EXPIRES 3-10-23  
RESIDING AT 3-10-23 Skagitville WA

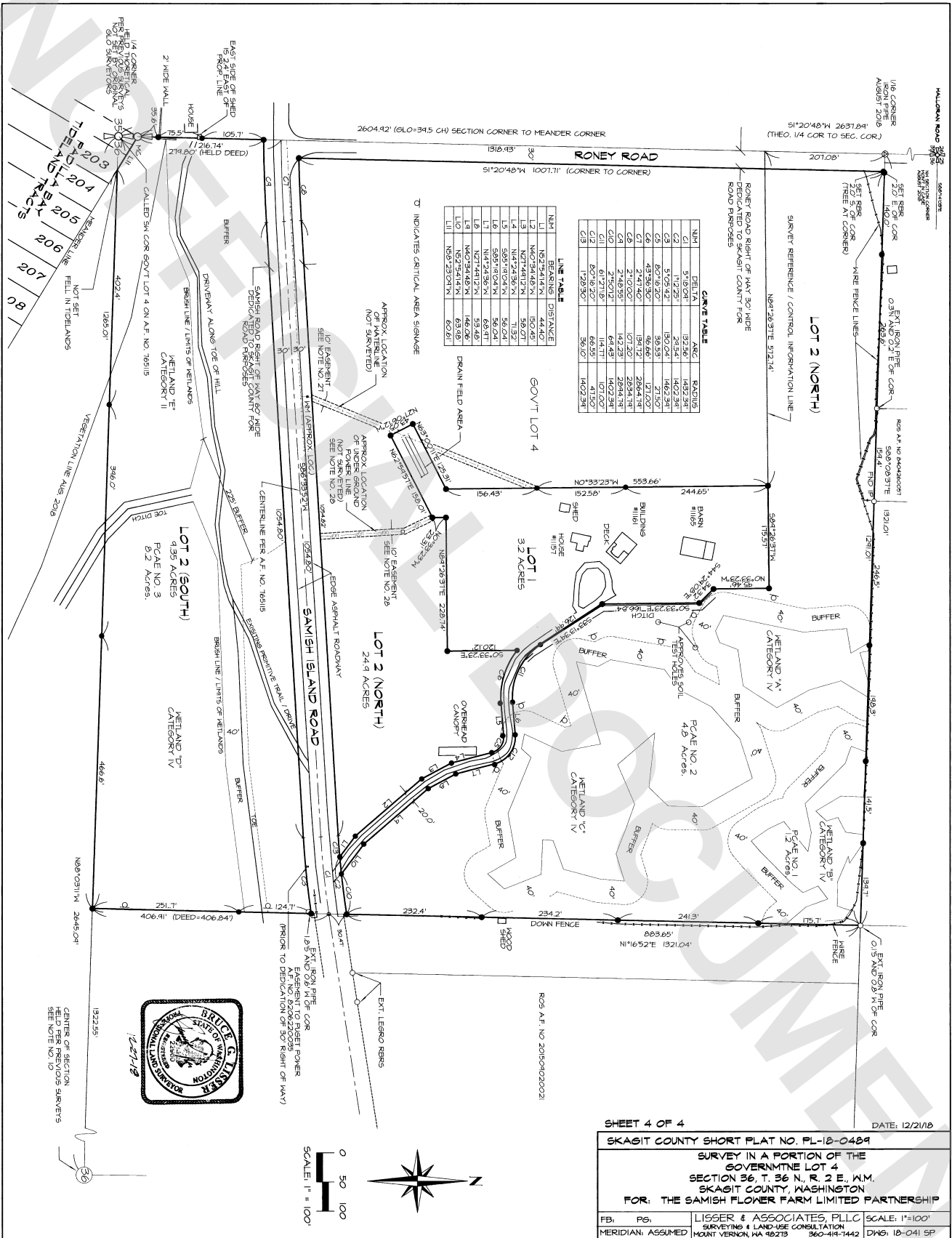


SHEET 2 OF 4

DATE: 12/27/18

FB	RS	ISSUER & ASSOCIATED FILE SCALE:	VERDIAN, ASSIGNED
SKAGIT COUNTY SHORT PLAT NO. PL-18-0464 SURVEY IN A PORTION OF THE GOVERNMENT LOT 4 SECTION 36, T. 36 N., R. 2 E., M. SKAGIT COUNTY, WASHINGTON FOR: THE SAMSUIH FLOWER FARM LIMITED PARTNERSHIP			





LINE TABLE

N/M	BEARINGS	DISTANCE
L1	N57°54'14"N	44.40'
L2	N02°34'48"W	150.49'
L3	N44°24'12"W	59.87'
L4	N44°24'12"W	59.87'
L5	S85°10'04"W	56.04'
L6	S85°10'04"W	56.04'
L7	N14°23'36"W	68.91'
L8	N02°34'48"W	142.60'
L9	N57°54'14"N	68.95'
L10	N57°54'14"N	68.95'
L11	N57°23'07"W	60.61'

CURVE TABLE

N/M	DELTA	ARC	RADIUS
C1	37°03'41"	192.50'	1493.34'
C2	111°52'11"	1053.34'	1053.34'
C3	57°05'42"	180.04'	1462.34'
C4	80°16'20"	80.53'	271.50'
C5	43°38'30"	49.66'	271.00'
C6	27°17'07"	47.12'	284.14'
C7	107°21'42"	142.23'	284.14'
C8	27°05'27"	64.48'	1402.34'
C9	61°27'18"	141.77'	1071.00'
C10	80°16'20"	80.53'	271.50'
C11	128°28'00"	149.57'	149.57'

SHEET 4 OF 4 DATE: 12/21/18

SKAGIT COUNTY SHORT PLAT NO. PL-18-0489

SURVEY IN A PORTION OF THE GOVERNMENT LOT 4 SECTION 36, T. 36 N., R. 2 E., W.M. SKAGIT COUNTY, WASHINGTON FOR: THE SAMISH FLOWER FARM LIMITED PARTNERSHIP

FB:	PG:	LISSEY & ASSOCIATES, PLLC	SCALE: 1"=100'
MERIDIAN:	ASSUMED	SURVEYING & LAND-USE CONSULTATION MOUNT VERNON, WA 98278	360-418-1442 DWG: 18-041.SP

