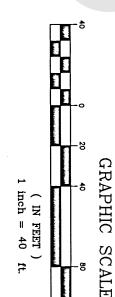
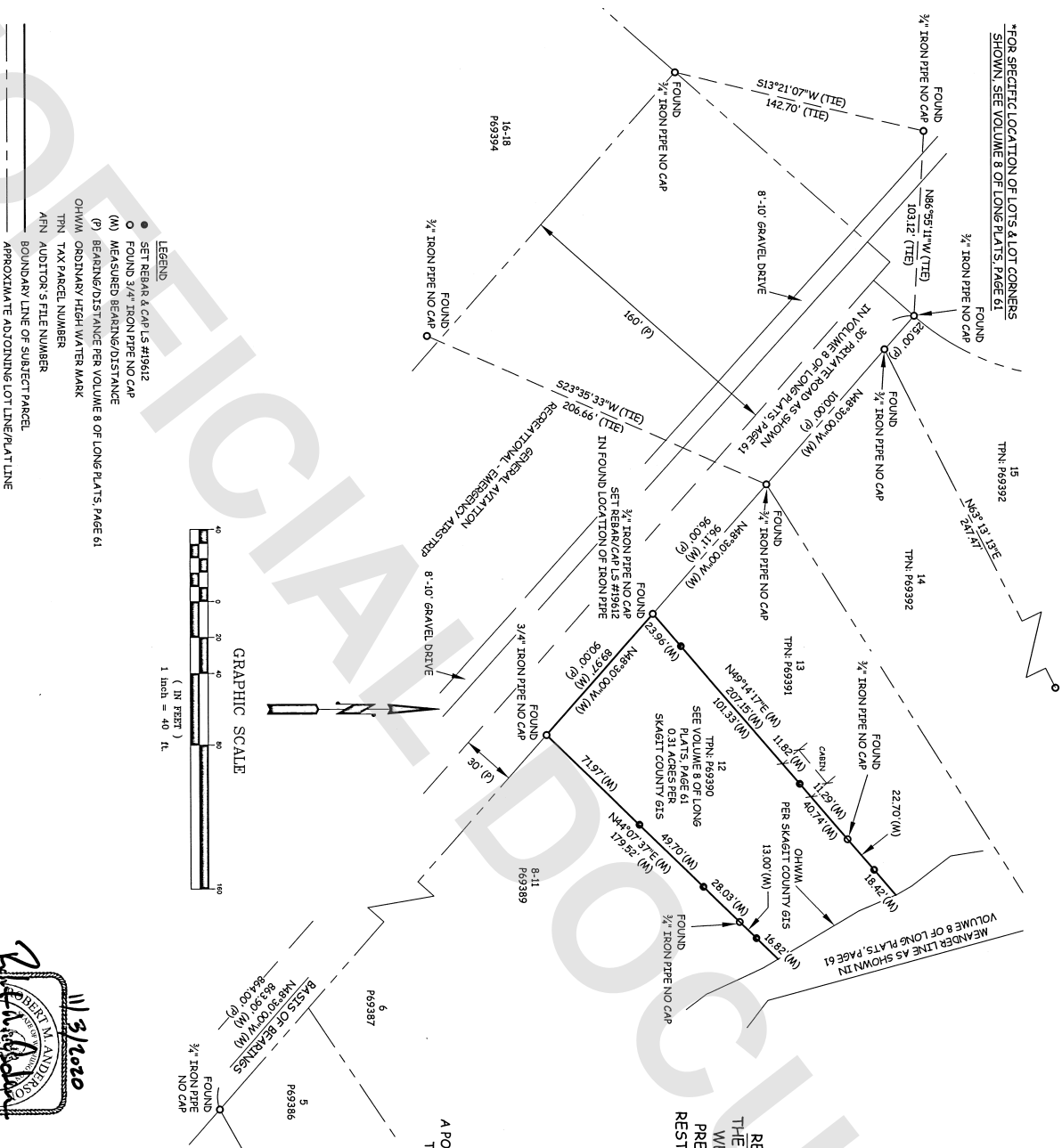


*FOR SPECIFIC LOCATION OF LOTS & LOT CORNERS
SHOWN, SEE VOLUME 3 OF LONG PLATS, PAGE 61

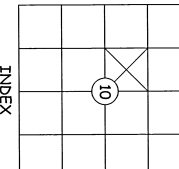


- LEGEND**
- SET REBAR & CAP LS #19612
 - FOUND 3/4" IRON PIPE NO CAP
 - (M) MEASURED BEARING/DISTANCE
 - (P) BEARING/DISTANCE PER VOLUME 8 OF LONG PLATS, PAGE 61
 - OHWM ORDINARY HIGH WATER MARK
 - TFN TAX PARCEL NUMBER
 - AFN AUDITOR'S FILE NUMBER
 - BOUNDARY LINE OF SUBJECT PARCEL
 - APPROXIMATE ADJOINING LOT LINE/PLAT LINE



11/3/2020

RE-RECORDED FROM AFN 202006040041
THE ORIGINAL FRONT CORNERS FOR LOT 12
WERE RECOVERED SUBSEQUENT TO THE
PREVIOUS FILING. THE LOT LINES WERE
RE-STAKED AND THE RECOVERED CORNER ARE
SHOWN ON THIS SURVEY.



A PORTION OF GOV'T LOT 3 (SE/NW), SECTION 10,
TOWNSHIP 36 NORTH, RANGE 1 WEST, W.M.
SINCLAIR ISLAND, SKAGIT COUNTY, WA

RE-RECORD OF SURVEY

PREPARED AT THE REQUEST OF
JIM KOLB
STAR SURVEYING, INC.
P.O. BOX 2997
FRIDAY HARBOR
WASHINGTON 98250
phone - (360)378-5072
fax - (360)378-4539
star@starsurveying.com
www.starsurveying.com

LAND SURVEYING
MAPPING
PLANNING

CAD BY: ANM	DATE: 09/23/2020	JOB NO.: 2208
CHK BY: BMA	PAGE 2 OF 2	SCALE: 1" = 40'
PLD BK: 143	2208.DWG	LD: 2009

SURVEYED BY FIELD TRAVERSE WITH A TRIMBLE S-7 ROBOTIC SYSTEM