

SURVEY DESCRIPTION

PARCELS PRIOR TO BOUNDARY LINE ADJUSTMENT
 EXHIBIT "A" SKAGIT COUNTY AUDITOR'S FILE NO. 2021029260076
 (SKAGIT COUNTY ASSESSOR'S PARCEL NUMBER P-12166)
 THE WEST 1/2 OF LOT 6, BLOCK 130, FIRST ADDITION TO BURLINGTON, SKAGIT CO., WASH., AS PER PLAT RECORDED IN VOLUME 3 OF PLATS, PAGE II, RECORDS OF SKAGIT COUNTY, WASHINGTON.
 TOGETHER WITH THE NORTH 1/2 OF VACATED CEDAR STREET ADJACENT WHICH REVERTED THERETO BY OPERATION OF LAW.
 EXHIBIT "B" SKAGIT COUNTY AUDITOR'S FILE NO. 2021029260076
 (SKAGIT COUNTY ASSESSOR'S PARCEL NUMBER P-12169)
 THE EAST 1/2 OF LOT 6, BLOCK 130, FIRST ADDITION TO BURLINGTON, SKAGIT CO., WASH., AS PER PLAT RECORDED IN VOLUME 3 OF PLATS, PAGE II, RECORDS OF SKAGIT COUNTY, WASHINGTON.
 TOGETHER WITH THE NORTH 1/2 OF VACATED CEDAR STREET ADJACENT WHICH REVERTED THERETO BY OPERATION OF LAW.
 ALL OF THE ABOVE BEING SUBJECT TO AND TOGETHER WITH EASEMENTS, RESERVATIONS, RESTRICTIONS, COVENANTS, LIENS, LEASES, COURT CAUSES AND OTHER INSTRUMENTS OF RECORD.
 ALL OF THE ABOVE SITUATED IN THE CITY OF BURLINGTON, COUNTY OF SKAGIT, STATE OF WASHINGTON.

AFTER BOUNDARY LINE ADJUSTMENT
 SKAGIT COUNTY ASSESSOR'S PARCEL NUMBERS P-12166 AND P-12164
 EXHIBIT "C" SKAGIT COUNTY AUDITOR'S FILE NO. 2021029260076
 THE NORTH 6375 FEET WAS MEASURED PERPENDICULAR TO THE NORTH LINE OF LOT 6, BLOCK 130, FIRST ADDITION TO BURLINGTON, SKAGIT COUNTY, WASHINGTON, PLAT NUMBER 3 OF PLATS, PAGE II, RECORDS OF SKAGIT COUNTY, WASHINGTON.
 EXHIBIT "D" SKAGIT COUNTY AUDITOR'S FILE NO. 2021029260076
 LOT 6, BLOCK 130, FIRST ADDITION TO BURLINGTON, SKAGIT CO., WASH., AS PER PLAT RECORDED IN VOLUME 3 OF PLATS, PAGE II, RECORDS OF SKAGIT COUNTY, WASHINGTON.
 TOGETHER WITH THE NORTH 1/2 OF VACATED CEDAR STREET ADJACENT WHICH REVERTED THERETO BY OPERATION OF LAW.

EXCEPT FROM ALL OF THE ABOVE, THE NORTH 6375 FEET WAS MEASURED PERPENDICULAR TO THE NORTH LINE OF SAID LOT 6, BLOCK 130. ALL OF THE ABOVE BEING SUBJECT TO AND TOGETHER WITH EASEMENTS, RESERVATIONS, RESTRICTIONS, COVENANTS, LIENS, LEASES, COURT CAUSES AND OTHER INSTRUMENTS OF RECORD.
 ALL OF THE ABOVE SITUATED IN THE CITY OF BURLINGTON, COUNTY OF SKAGIT, STATE OF WASHINGTON.

SURVEYOR'S CERTIFICATE

THIS MAP CORRECTLY REPRESENTS A SURVEY MADE BY ME OR UNDER MY DIRECTION IN CONFORMANCE WITH THE REQUIREMENTS OF THE SURVEY RECORDING ACT AT THE REQUEST OF BRIAN SHELLEY PROPERTIES, LLC, A LIMITED LIABILITY PARTNERSHIP, IN JULY 2021.

KEVIN G. LISBER, P.L.S., CERTIFICATE NO. 20123164
 LISBER & ASSOCIATES, PLLC
 3320 MILWAUKEE ST/PO BOX 104
 BURLINGTON, WA 98259
 PHONE (360) 414-1442
 FAX (360) 414-0521
 E-MAIL: KEVIN@LISBER.COM

DATE 10-15-21

NOTES

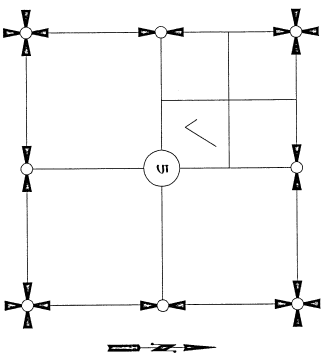
- INDICATES REBAR SET AND CAPPED WITH YELLOW CAP DESCRIBED LISBER 20123164.
- INDICATES EXISTING PIPE OR REBAR FOUND AS NOTED
- INDICATES EXISTING MONUMENT AS NOTED
- DESCRIPTION FOR THIS SURVEY IS BASED UPON SUT CLAIM BOUNDARY LINE ADJUSTMENT DEED RECORDED UNDER SKAGIT COUNTY AUDITOR'S FILE NUMBER 2021029260076.
- FOR ADDITIONAL SURVEY AND SURVEYOR INFORMATION SEE FIRST RECORDS OF SKAGIT COUNTY ASSESSOR'S PARCEL NUMBER P-12166 AND P-12169 UNDER AUDITOR'S FILE NO. 9501240051 AND RECORD OF SURVEY MAPS RECORDED UNDER AUDITOR'S FILE NUMBERS 201023240230 AND 20102310044, ALL IN RECORDS OF SKAGIT COUNTY AUDITOR.
- INSTRUMENTATION: TRIMBLE 5-7 THEODOLITE DISTANCE METER
- SURVEY PROCEDURE: STANDARD FIELD TRAVERSE
- MERIDIAN: ASSUMED
- BASIS OF BEARING: MOUNTAINTED EAST LINE OF THE NORTHWEST 1/4 OF SECTION 5, TOWNSHIP 34 NORTH, RANGE 4 EAST, 1/4 BEARING = SOUTH 02194° EAST
- THIS SURVEY WAS PERFORMED AT THE REQUEST OF BRIAN SHELLEY PROPERTIES, LLC, A LIMITED LIABILITY PARTNERSHIP FOR THE DELINEATION AND STAKING OF THE DESCRIBED PROPERTY, AS SHOWN.
- EXCEPT AS SPECIFICALLY STATED OR SHOWN ON THIS SURVEY MAP, THIS SURVEY DOES NOT PURPORT TO REFLECT ALL OF THE FOLLOWING, WHICH MAY BE APPLICABLE TO THE SUBJECT REAL ESTATE: EASEMENTS, BUILDING SETBACK LINES, RESTRICTIONS, COVENANTS, SUBDIVISION RESTRICTIONS, ZONING OR OTHER LAND-USE REGULATIONS, NO TITLE REPORT WAS PROVIDED FOR THIS SURVEY.
- ALL DISTANCES SHOWN HEREON ARE IN FEET.
- THIS SURVEY FOUND OCCUPATIONAL INDICATORS (FENCES AND DRIVEWAYS) AS PER PAR 6 CHAPTER 332-130. LINES OF OCCUPATION WERE MEASURED AND SHOWN ON THIS SURVEY MAP. THE OCCUPATION OWNERSHIP OF THE BOUNDARY SURVEY HAS ONLY SHOWN THE RELATIONSHIP OF LINES OF OCCUPATION TO THE DEEDED LINES OF RECORD. NO RESOLUTION OF OWNERSHIP BASED ON UNWRITTEN RIGHTS HAS BEEN MADE OR IMPLIED BY THIS SURVEY.

AUDITOR'S CERTIFICATE

FILED FOR RECORD AT THE REQUEST OF LISBER & ASSOCIATES, PLLC.
 FILED FOR RECORD THIS 15th DAY OF October 2021 AT
 THE COUNTY CLERK'S OFFICE IN THE CITY OF BURLINGTON, WASHINGTON.
 FILE NO. 202110150094 RECORDS OF SKAGIT COUNTY, WASHINGTON.

SKAGIT COUNTY AUDITOR
Judith Pelias

DEPUTY
Shawn Gault



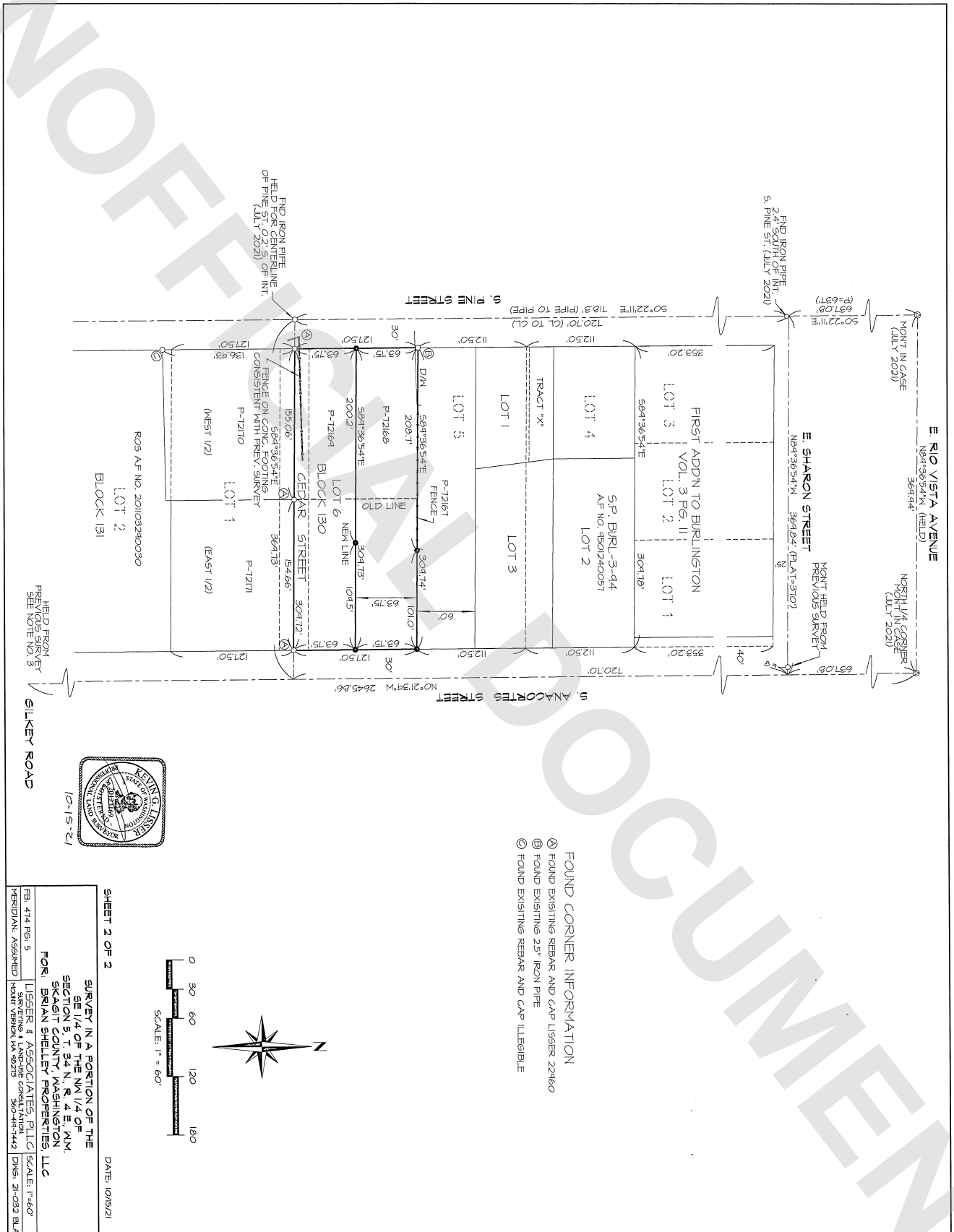
SECTION 5, TOWNSHIP 34 NORTH, RANGE 4 EAST, 1/4
 VICINITY MAP

SHEET 1 OF 2

DATE: 10/15/21

SURVEY IN A PORTION OF THE
 SECTION 5, T. 34 N. R. 4 E. 1/4, N.W.
 SKAGIT COUNTY, WASHINGTON.
 FOR: BRIAN SHELLEY PROPERTIES, LLC

FB:	LISBER & ASSOCIATES, PLLC	SCALE:
FG:	3600-414-1442	DWG: 21-032 BLA
FR:	10/15/21	
FS:	10/15/21	
FT:	10/15/21	
FW:	10/15/21	
FX:	10/15/21	
FY:	10/15/21	
FZ:	10/15/21	
FA:	10/15/21	
FB:	10/15/21	
FC:	10/15/21	
FD:	10/15/21	
FE:	10/15/21	
FF:	10/15/21	
FG:	10/15/21	
FH:	10/15/21	
FI:	10/15/21	
FJ:	10/15/21	
FK:	10/15/21	
FL:	10/15/21	
FM:	10/15/21	
FN:	10/15/21	
FO:	10/15/21	
FP:	10/15/21	
FQ:	10/15/21	
FR:	10/15/21	
FS:	10/15/21	
FT:	10/15/21	
FU:	10/15/21	
FV:	10/15/21	
FW:	10/15/21	
FX:	10/15/21	
FY:	10/15/21	
FZ:	10/15/21	
FA:	10/15/21	
FB:	10/15/21	
FC:	10/15/21	
FD:	10/15/21	
FE:	10/15/21	
FF:	10/15/21	
FG:	10/15/21	
FH:	10/15/21	
FI:	10/15/21	
FJ:	10/15/21	
FK:	10/15/21	
FL:	10/15/21	
FM:	10/15/21	
FN:	10/15/21	
FO:	10/15/21	
FP:	10/15/21	
FQ:	10/15/21	
FR:	10/15/21	
FS:	10/15/21	
FT:	10/15/21	
FU:	10/15/21	
FV:	10/15/21	
FW:	10/15/21	
FX:	10/15/21	
FY:	10/15/21	
FZ:	10/15/21	
FA:	10/15/21	
FB:	10/15/21	
FC:	10/15/21	
FD:	10/15/21	
FE:	10/15/21	
FF:	10/15/21	
FG:	10/15/21	
FH:	10/15/21	
FI:	10/15/21	
FJ:	10/15/21	
FK:	10/15/21	
FL:	10/15/21	
FM:	10/15/21	
FN:	10/15/21	
FO:	10/15/21	
FP:	10/15/21	
FQ:	10/15/21	
FR:	10/15/21	
FS:	10/15/21	
FT:	10/15/21	
FU:	10/15/21	
FV:	10/15/21	
FW:	10/15/21	
FX:	10/15/21	
FY:	10/15/21	
FZ:	10/15/21	
FA:	10/15/21	
FB:	10/15/21	
FC:	10/15/21	
FD:	10/15/21	
FE:	10/15/21	
FF:	10/15/21	
FG:	10/15/21	
FH:	10/15/21	
FI:	10/15/21	
FJ:	10/15/21	
FK:	10/15/21	
FL:	10/15/21	
FM:	10/15/21	
FN:	10/15/21	
FO:	10/15/21	
FP:	10/15/21	
FQ:	10/15/21	
FR:	10/15/21	
FS:	10/15/21	
FT:	10/15/21	
FU:	10/15/21	
FV:	10/15/21	
FW:	10/15/21	
FX:	10/15/21	
FY:	10/15/21	
FZ:	10/15/21	
FA:	10/15/21	
FB:	10/15/21	
FC:	10/15/21	
FD:	10/15/21	
FE:	10/15/21	
FF:	10/15/21	
FG:	10/15/21	
FH:	10/15/21	
FI:	10/15/21	
FJ:	10/15/21	
FK:	10/15/21	
FL:	10/15/21	
FM:	10/15/21	
FN:	10/15/21	
FO:	10/15/21	
FP:	10/15/21	
FQ:	10/15/21	
FR:	10/15/21	
FS:	10/15/21	
FT:	10/15/21	
FU:	10/15/21	
FV:	10/15/21	
FW:	10/15/21	
FX:	10/15/21	
FY:	10/15/21	
FZ:	10/15/21	
FA:	10/15/21	
FB:	10/15/21	
FC:	10/15/21	
FD:	10/15/21	
FE:	10/15/21	
FF:	10/15/21	
FG:	10/15/21	
FH:	10/15/21	
FI:	10/15/21	
FJ:	10/15/21	
FK:	10/15/21	
FL:	10/15/21	
FM:	10/15/21	
FN:	10/15/21	
FO:	10/15/21	
FP:	10/15/21	
FQ:	10/15/21	
FR:	10/15/21	
FS:	10/15/21	
FT:	10/15/21	
FU:	10/15/21	
FV:	10/15/21	
FW:	10/15/21	
FX:	10/15/21	
FY:	10/15/21	
FZ:	10/15/21	
FA:	10/15/21	
FB:	10/15/21	
FC:	10/15/21	
FD:	10/15/21	
FE:	10/15/21	
FF:	10/15/21	
FG:	10/15/21	
FH:	10/15/21	
FI:	10/15/21	
FJ:	10/15/21	
FK:	10/15/21	
FL:	10/15/21	
FM:	10/15/21	
FN:	10/15/21	
FO:	10/15/21	
FP:	10/15/21	
FQ:	10/15/21	
FR:	10/15/21	
FS:	10/15/21	
FT:	10/15/21	
FU:	10/15/21	
FV:	10/15/21	
FW:	10/15/21	
FX:	10/15/21	
FY:	10/15/21	
FZ:	10/15/21	
FA:	10/15/21	
FB:	10/15/21	
FC:	10/15/21	
FD:	10/15/21	
FE:	10/15/21	
FF:	10/15/21	
FG:	10/15/21	
FH:	10/15/21	
FI:	10/15/21	
FJ:	10/15/21	
FK:	10/15/21	
FL:	10/15/21	
FM:	10/15/21	
FN:	10/15/21	
FO:	10/15/21	
FP:	10/15/21	
FQ:	10/15/21	
FR:	10/15/21	
FS:	10/15/21	
FT:	10/15/21	
FU:	10/15/21	
FV:	10/15/21	
FW:	10/15/21	
FX:	10/15/21	
FY:	10/15/21	
FZ:	10/15/21	
FA:	10/15/21	
FB:	10/15/21	
FC:	10/15/21	
FD:	10/15/21	
FE:	10/15/21	
FF:	10/15/21	
FG:	10/15/21	
FH:	10/15/21	
FI:	10/15/21	
FJ:	10/15/21	
FK:	10/15/21	
FL:	10/15/21	
FM:	10/15/21	
FN:	10/15/21	
FO:	10/15/21	
FP:	10/15/21	
FQ:	10/15/21	
FR:	10/15/21	
FS:	10/15/21	
FT:	10/15/21	
FU:	10/15/21	
FV:	10/15/21	
FW:	10/15/21	
FX:	10/15/21	
FY:	10/15/21	
FZ:	10/15/21	
FA:	10/15/21	
FB:	10/15/21	
FC:	10/15/21	
FD:	10/15/21	
FE:	10/15/21	
FF:	10/15/21	
FG:	10/15/21	
FH:	10/15/21	
FI:	10/15/21	
FJ:	10/15/21	
FK:	10/15/21	
FL:	10/15/21	
FM:	10/15/21	
FN:	10/15/21	
FO:	10/15/21	
FP:	10/15/21	
FQ:	10/15/21	
FR:	10/15/21	
FS:	10/15/21	
FT:	10/15/21	
FU:	10/15/21	
FV:	10/15/21	
FW:	10/15/21	
FX:	10/15/21	
FY:	10/15/21	
FZ:	10/15/21	
FA:	10/15/21	
FB:	10/15/21	
FC:	10/15/21	
FD:	10/15/21	
FE:	10/15/21	
FF:	10/15/21	
FG:	10/15/21	
FH:	10/15/21	
FI:	10/15/21	
FJ:	10/15/21	
FK:	10/15/21	
FL:	10/15/21	
FM:	10/15/21	
FN:	10/15/21	
FO:	10/15/21	
FP:	10/15/21	
FQ:	10/15/21	
FR:	10/15/21	
FS:	1	



FOUND CORNER INFORMATION
 ⊗ FOUND EXISTING REBAR AND CAP LISSNER 22#60
 ⊕ FOUND EXISTING 2 1/2" IRON PIPE
 ⊙ FOUND EXISTING REBAR AND CAP ILLIBLEG



SHEET 2 OF 2
 DATE: 10/19/21
 SURVEY IN A PORTION OF THE
 SE 1/4 OF THE NW 1/4 OF
 SECTION 5, T. 24 N., R. 4 E., S. 14 M.,
 SKAGIT COUNTY, WASHINGTON,
 FOR: BRIAN SHELEY PROPERTIES, LLC
 LISSNER & ASSOCIATES, PLLC SCALE: 1"=60'
 FB: 414 Pg. 5
 MERIDIAN: ASSIGNED
 WASHINGTON, WA 98275 360-467-1442
 DWG: 21-032 B.L.A.

