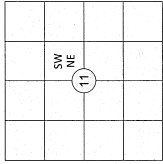


RECORD OF SURVEY

BEING A PORTION OF THE SW 1/4 OF THE NE 1/4 OF SECTION 11, TOWNSHIP 35 NORTH, RANGE 7 EAST OF W.M. SKAGIT COUNTY, WASHINGTON

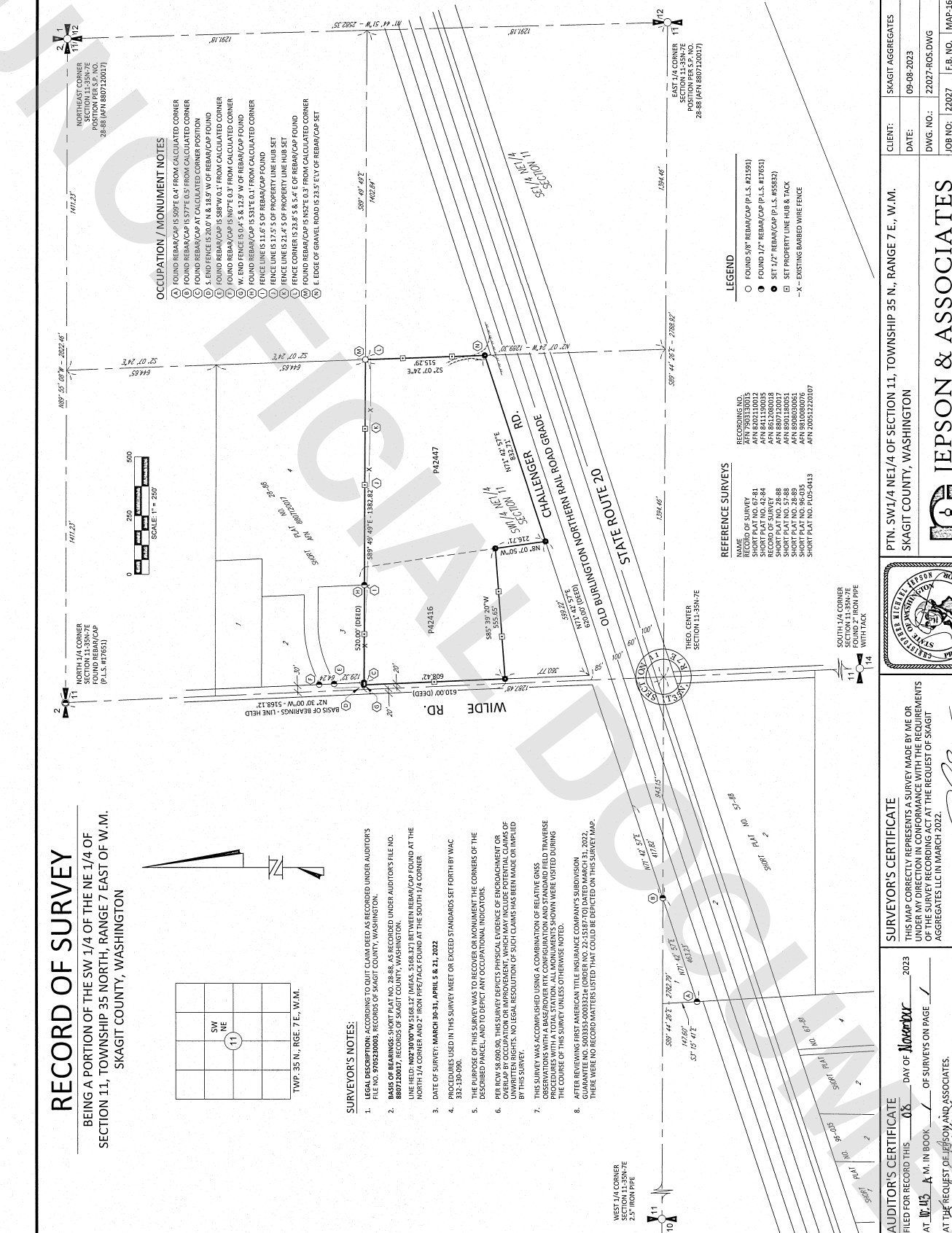


TWP. 35 N., RGE. 7 E., W.M.

SURVEYOR'S NOTES:

- LEGAL DESCRIPTION: ACCORDING TO QUIT CLAIM DEED AS RECORDED UNDER AUDITOR'S FILE NO. 97623006, RECORDS OF SKAGIT COUNTY, WASHINGTON.
- BASIS OF BEARINGS: SHORT PLAT NO. 28-88, AS RECORDED UNDER AUDITOR'S FILE NO. 880220017, RECORDS OF SKAGIT COUNTY, WASHINGTON.
- DATE OF SURVEY: MARCH 30-31, APRIL 5 & 21, 2022
- PROCEDURES USED IN THIS SURVEY MEET OR EXCEED STANDARDS SET FORTH BY WAC 333-130-090.
- THE PURPOSE OF THIS SURVEY WAS TO RECOVER OR MONUMENT THE CORNERS OF THE DESCRIBED PARCEL, AND TO DEPICT ANY OCCUPATIONAL INDICATORS.
- PER ROW 58.090-90, THIS SURVEY DEPICTS PHYSICAL EVIDENCE OF ENCROACHMENT OR OVERLAP BY OCCUPATION OR IMPROVEMENT, WHICH MAY INCLUDE POTENTIAL CLAIMS OF ADVERSE POSSESSION. NO LEGAL RESOLUTION OF SUCH CLAIMS HAS BEEN MADE OR IMPLIED BY THIS SURVEY.
- THIS SURVEY WAS ACCOMPLISHED USING A COMBINATION OF REAL-TIME OBSERVATIONS WITH A BASE/ROVER RTK CONFIGURATION AND STANDARD FIELD TRAVERSE PROCEDURES WITH A TOTAL STATION. ALL MONUMENTS AND STANDARD FIELD TRAVERSE OBSERVATIONS WITH A TOTAL STATION. ALL MONUMENTS SHOWN WERE VISITED DURING THE COURSE OF THIS SURVEY UNLESS OTHERWISE NOTED.
- AFTER REVIEWING FIRST AMERICAN TITLE INSURANCE COMPANY'S SUBDIVISION GUARANTEE NO. 500355-0003224 (ORD. NO. 22-0538770) DATED MARCH 31, 2022, THERE WERE NO RECORDS THAT WERE USED THAT SHOULD BE DEPICTED ON THIS SURVEY MAP.

- ### OCCUPATION / MONUMENT NOTES
- (1) FOUND REBAR/CAP IS 50.4" FROM CALCULATED CORNER
 - (2) FOUND REBAR/CAP IS 71.5" FROM CALCULATED CORNER
 - (3) FOUND REBAR/CAP IS 70.0" FROM CALCULATED CORNER
 - (4) FOUND REBAR/CAP IS 58.8" FROM CALCULATED CORNER
 - (5) FOUND REBAR/CAP IS 58.8" FROM CALCULATED CORNER
 - (6) FOUND REBAR/CAP IS 58.8" FROM CALCULATED CORNER
 - (7) FOUND REBAR/CAP IS 58.8" FROM CALCULATED CORNER
 - (8) FOUND REBAR/CAP IS 58.8" FROM CALCULATED CORNER
 - (9) FOUND REBAR/CAP IS 58.8" FROM CALCULATED CORNER
 - (10) FOUND REBAR/CAP IS 58.8" FROM CALCULATED CORNER
 - (11) FOUND REBAR/CAP IS 58.8" FROM CALCULATED CORNER
 - (12) FOUND REBAR/CAP IS 58.8" FROM CALCULATED CORNER
 - (13) FOUND REBAR/CAP IS 58.8" FROM CALCULATED CORNER
 - (14) FOUND REBAR/CAP IS 58.8" FROM CALCULATED CORNER
 - (15) FOUND REBAR/CAP IS 58.8" FROM CALCULATED CORNER
 - (16) FOUND REBAR/CAP IS 58.8" FROM CALCULATED CORNER
 - (17) FOUND REBAR/CAP IS 58.8" FROM CALCULATED CORNER
 - (18) FOUND REBAR/CAP IS 58.8" FROM CALCULATED CORNER
 - (19) FOUND REBAR/CAP IS 58.8" FROM CALCULATED CORNER
 - (20) FOUND REBAR/CAP IS 58.8" FROM CALCULATED CORNER
 - (21) FOUND REBAR/CAP IS 58.8" FROM CALCULATED CORNER
 - (22) FOUND REBAR/CAP IS 58.8" FROM CALCULATED CORNER
 - (23) FOUND REBAR/CAP IS 58.8" FROM CALCULATED CORNER
 - (24) FOUND REBAR/CAP IS 58.8" FROM CALCULATED CORNER
 - (25) FOUND REBAR/CAP IS 58.8" FROM CALCULATED CORNER
 - (26) FOUND REBAR/CAP IS 58.8" FROM CALCULATED CORNER
 - (27) FOUND REBAR/CAP IS 58.8" FROM CALCULATED CORNER
 - (28) FOUND REBAR/CAP IS 58.8" FROM CALCULATED CORNER
 - (29) FOUND REBAR/CAP IS 58.8" FROM CALCULATED CORNER
 - (30) FOUND REBAR/CAP IS 58.8" FROM CALCULATED CORNER
 - (31) FOUND REBAR/CAP IS 58.8" FROM CALCULATED CORNER
 - (32) FOUND REBAR/CAP IS 58.8" FROM CALCULATED CORNER
 - (33) FOUND REBAR/CAP IS 58.8" FROM CALCULATED CORNER
 - (34) FOUND REBAR/CAP IS 58.8" FROM CALCULATED CORNER
 - (35) FOUND REBAR/CAP IS 58.8" FROM CALCULATED CORNER
 - (36) FOUND REBAR/CAP IS 58.8" FROM CALCULATED CORNER
 - (37) FOUND REBAR/CAP IS 58.8" FROM CALCULATED CORNER
 - (38) FOUND REBAR/CAP IS 58.8" FROM CALCULATED CORNER
 - (39) FOUND REBAR/CAP IS 58.8" FROM CALCULATED CORNER
 - (40) FOUND REBAR/CAP IS 58.8" FROM CALCULATED CORNER
 - (41) FOUND REBAR/CAP IS 58.8" FROM CALCULATED CORNER
 - (42) FOUND REBAR/CAP IS 58.8" FROM CALCULATED CORNER
 - (43) FOUND REBAR/CAP IS 58.8" FROM CALCULATED CORNER
 - (44) FOUND REBAR/CAP IS 58.8" FROM CALCULATED CORNER
 - (45) FOUND REBAR/CAP IS 58.8" FROM CALCULATED CORNER
 - (46) FOUND REBAR/CAP IS 58.8" FROM CALCULATED CORNER
 - (47) FOUND REBAR/CAP IS 58.8" FROM CALCULATED CORNER
 - (48) FOUND REBAR/CAP IS 58.8" FROM CALCULATED CORNER
 - (49) FOUND REBAR/CAP IS 58.8" FROM CALCULATED CORNER
 - (50) FOUND REBAR/CAP IS 58.8" FROM CALCULATED CORNER
 - (51) FOUND REBAR/CAP IS 58.8" FROM CALCULATED CORNER
 - (52) FOUND REBAR/CAP IS 58.8" FROM CALCULATED CORNER
 - (53) FOUND REBAR/CAP IS 58.8" FROM CALCULATED CORNER
 - (54) FOUND REBAR/CAP IS 58.8" FROM CALCULATED CORNER
 - (55) FOUND REBAR/CAP IS 58.8" FROM CALCULATED CORNER
 - (56) FOUND REBAR/CAP IS 58.8" FROM CALCULATED CORNER
 - (57) FOUND REBAR/CAP IS 58.8" FROM CALCULATED CORNER
 - (58) FOUND REBAR/CAP IS 58.8" FROM CALCULATED CORNER
 - (59) FOUND REBAR/CAP IS 58.8" FROM CALCULATED CORNER
 - (60) FOUND REBAR/CAP IS 58.8" FROM CALCULATED CORNER
 - (61) FOUND REBAR/CAP IS 58.8" FROM CALCULATED CORNER
 - (62) FOUND REBAR/CAP IS 58.8" FROM CALCULATED CORNER
 - (63) FOUND REBAR/CAP IS 58.8" FROM CALCULATED CORNER
 - (64) FOUND REBAR/CAP IS 58.8" FROM CALCULATED CORNER
 - (65) FOUND REBAR/CAP IS 58.8" FROM CALCULATED CORNER
 - (66) FOUND REBAR/CAP IS 58.8" FROM CALCULATED CORNER
 - (67) FOUND REBAR/CAP IS 58.8" FROM CALCULATED CORNER
 - (68) FOUND REBAR/CAP IS 58.8" FROM CALCULATED CORNER
 - (69) FOUND REBAR/CAP IS 58.8" FROM CALCULATED CORNER
 - (70) FOUND REBAR/CAP IS 58.8" FROM CALCULATED CORNER
 - (71) FOUND REBAR/CAP IS 58.8" FROM CALCULATED CORNER
 - (72) FOUND REBAR/CAP IS 58.8" FROM CALCULATED CORNER
 - (73) FOUND REBAR/CAP IS 58.8" FROM CALCULATED CORNER
 - (74) FOUND REBAR/CAP IS 58.8" FROM CALCULATED CORNER
 - (75) FOUND REBAR/CAP IS 58.8" FROM CALCULATED CORNER
 - (76) FOUND REBAR/CAP IS 58.8" FROM CALCULATED CORNER
 - (77) FOUND REBAR/CAP IS 58.8" FROM CALCULATED CORNER
 - (78) FOUND REBAR/CAP IS 58.8" FROM CALCULATED CORNER
 - (79) FOUND REBAR/CAP IS 58.8" FROM CALCULATED CORNER
 - (80) FOUND REBAR/CAP IS 58.8" FROM CALCULATED CORNER
 - (81) FOUND REBAR/CAP IS 58.8" FROM CALCULATED CORNER
 - (82) FOUND REBAR/CAP IS 58.8" FROM CALCULATED CORNER
 - (83) FOUND REBAR/CAP IS 58.8" FROM CALCULATED CORNER
 - (84) FOUND REBAR/CAP IS 58.8" FROM CALCULATED CORNER
 - (85) FOUND REBAR/CAP IS 58.8" FROM CALCULATED CORNER
 - (86) FOUND REBAR/CAP IS 58.8" FROM CALCULATED CORNER
 - (87) FOUND REBAR/CAP IS 58.8" FROM CALCULATED CORNER
 - (88) FOUND REBAR/CAP IS 58.8" FROM CALCULATED CORNER
 - (89) FOUND REBAR/CAP IS 58.8" FROM CALCULATED CORNER
 - (90) FOUND REBAR/CAP IS 58.8" FROM CALCULATED CORNER
 - (91) FOUND REBAR/CAP IS 58.8" FROM CALCULATED CORNER
 - (92) FOUND REBAR/CAP IS 58.8" FROM CALCULATED CORNER
 - (93) FOUND REBAR/CAP IS 58.8" FROM CALCULATED CORNER
 - (94) FOUND REBAR/CAP IS 58.8" FROM CALCULATED CORNER
 - (95) FOUND REBAR/CAP IS 58.8" FROM CALCULATED CORNER
 - (96) FOUND REBAR/CAP IS 58.8" FROM CALCULATED CORNER
 - (97) FOUND REBAR/CAP IS 58.8" FROM CALCULATED CORNER
 - (98) FOUND REBAR/CAP IS 58.8" FROM CALCULATED CORNER
 - (99) FOUND REBAR/CAP IS 58.8" FROM CALCULATED CORNER
 - (100) FOUND REBAR/CAP IS 58.8" FROM CALCULATED CORNER



- ### LEGEND
- FOUND 5/8\"/>

- ### REFERENCE SURVEYS
- NAME OF SURVEY
- SHORT PLAT NO. 27-84
 - AFN 8202110012
 - SHORT PLAT NO. 42-84
 - AFN 8411000035
 - SHORT PLAT NO. 28-88
 - AFN 8802120017
 - SHORT PLAT NO. 52-88
 - AFN 8901100051
 - SHORT PLAT NO. 56-93S
 - AFN 9310000076
 - SHORT PLAT NO. 6105-0413
 - AFN 200512220707

CLIENT:	SKAGIT AGGREGATES
DATE:	09-08-2023
DWG. NO.:	22027-ROS.DWG
JOB NO.:	22027
DRAWN BY:	SMF
CHECKED BY:	CWJ
F.B. NO.:	MAP-16
SHEET:	1 of 1

PTN. SW1/4 NE1/4 OF SECTION 11, TOWNSHIP 35 N., RANGE 7 E., W.M.
SKAGIT COUNTY, WASHINGTON

JEPSON & ASSOCIATES
REGISTERED PROFESSIONAL ENGINEERS AND LAND SURVEYORS
222 GRAND AVE., SUITE C, BELLINGHAM, WA 98223
EMAIL: CJMJEPSON@JEPSONENGINEERING.COM

SURVEYOR'S CERTIFICATE
THIS MAP CORRECTLY REPRESENTS A SURVEY MADE BY ME OR UNDER MY DIRECTION IN CONFORMANCE WITH THE REQUIREMENTS OF THE SURVEY RECORDING ACT AT THE REQUEST OF SKAGIT AGGREGATES LLC IN MARCH 2022.

Christopher Michael Jepson 11/16/23
CHRISTOPHER MICHAEL JEPSON CERTIFICATE NO. 55853

AUDITOR'S CERTIFICATE
FILED FOR RECORD THIS 08 DAY OF November 2023
AT 10:45 A.M. IN BOOK 1 OF SURVEYS ON PAGE 1
AT THE REQUEST OF JEPSON & ASSOCIATES.
COUNTY AUDITOR *Anna Dickson* BY DEPUTY
AUDITOR'S FILE NO. 102311080100

