

LAND DESCRIPTION

(PER DEED OF TRUST AFN: 20230600085)
LOT 4 OF CITY OF ANACORTES, SHORT PLAT NUMBER ANA 0004 APPROVED DECEMBER 21, 2009 AND RECORDED JANUARY 20, 2010 UNDER AUDITORS FILE NO. 201001200001, BEING A PORTION OF LOT 4 OF THAT SURVEY RECORDED UNDER AUDITORS FILE NO. 200610050114 BEING LOCATED WITHIN A PORTION OF LOTS 67, 68 AND 69 ANACOCO BEACH, IN VOLUME 9 OF PLATS, PAGE 4, RECORDS OF SKAGITT COUNTY, WASHINGTON.

SURVEY NOTES:

- THE BASIS OF BEARINGS FOR THIS SURVEY IS 556°31'04"E, WASHINGTON STATE PLANE COORDINATES, NORTH ZONE, NAD 83/11, DERIVED FROM GNSS OBSERVATIONS BETWEEN FOUND ROAD CENTER LINE MONUMENTS ON ANACOCO BEACH ROAD.
- THE PARCEL BOUNDARY SHOWN WAS ESTABLISHED BASED ON FOUND SURVEY MONUMENTS IN THE FIELD AND THE SURVEY REFERENCES LISTED BELOW.
- THIS SURVEY WAS PERFORMED WITHOUT THE BENEFIT OF A TITLE REPORT AND DOES NOT PURPORT TO SHOW ALL RECORDED OR UNRECORDED EASEMENTS.
- THIS SURVEY WAS PERFORMED USING A TRIMBLE S6 TOTAL STATION WITH A TRIMBLE R10 GNSS RECEIVER. ALL FIELD WORK WAS PERFORMED IN SEPTEMBER/OCTOBER, 2023.
- ALL CORNERS ARE WITHIN 0.10' OF POSITION UNLESS OTHERWISE NOTED.
- PARCEL ALSO SUBJECT TO EASEMENTS LISTED IN EXHIBIT B OF STATUTORY WARRANTY DEED RECORDED UNDER AFN: 202304170067 RECORDS OF SKAGITT COUNTY, WA

FOUND 2" BRASS DISC W/ PUNCH IN CONC. IN CURB (FIELD)

FOUND 2" BRASS DISC W/ PUNCH IN CONC. IN CURB (FIELD)

FOUND 2" BRASS DISC W/ PUNCH IN CONC. IN CURB (FIELD)

FOUND 2" BRASS DISC W/ PUNCH IN CONC. IN CURB (FIELD)

FOUND 2" BRASS DISC W/ PUNCH IN CONC. IN CURB (FIELD)

FOUND 2" BRASS DISC W/ PUNCH IN CONC. IN CURB (FIELD)

FOUND 2" BRASS DISC W/ PUNCH IN CONC. IN CURB (FIELD)

FOUND 2" BRASS DISC W/ PUNCH IN CONC. IN CURB (FIELD)

FOUND 2" BRASS DISC W/ PUNCH IN CONC. IN CURB (FIELD)

FOUND 2" BRASS DISC W/ PUNCH IN CONC. IN CURB (FIELD)

FOUND 2" BRASS DISC W/ PUNCH IN CONC. IN CURB (FIELD)

FOUND 2" BRASS DISC W/ PUNCH IN CONC. IN CURB (FIELD)

FOUND 2" BRASS DISC W/ PUNCH IN CONC. IN CURB (FIELD)

FOUND 2" BRASS DISC W/ PUNCH IN CONC. IN CURB (FIELD)

FOUND 2" BRASS DISC W/ PUNCH IN CONC. IN CURB (FIELD)

FOUND 2" BRASS DISC W/ PUNCH IN CONC. IN CURB (FIELD)

FOUND 2" BRASS DISC W/ PUNCH IN CONC. IN CURB (FIELD)

FOUND 2" BRASS DISC W/ PUNCH IN CONC. IN CURB (FIELD)

FOUND 2" BRASS DISC W/ PUNCH IN CONC. IN CURB (FIELD)

FOUND 2" BRASS DISC W/ PUNCH IN CONC. IN CURB (FIELD)

FOUND 2" BRASS DISC W/ PUNCH IN CONC. IN CURB (FIELD)

FOUND 2" BRASS DISC W/ PUNCH IN CONC. IN CURB (FIELD)

FOUND 2" BRASS DISC W/ PUNCH IN CONC. IN CURB (FIELD)

FOUND 2" BRASS DISC W/ PUNCH IN CONC. IN CURB (FIELD)

FOUND 2" BRASS DISC W/ PUNCH IN CONC. IN CURB (FIELD)

FOUND 2" BRASS DISC W/ PUNCH IN CONC. IN CURB (FIELD)

FOUND 2" BRASS DISC W/ PUNCH IN CONC. IN CURB (FIELD)

FOUND 2" BRASS DISC W/ PUNCH IN CONC. IN CURB (FIELD)

FOUND 2" BRASS DISC W/ PUNCH IN CONC. IN CURB (FIELD)

FOUND 2" BRASS DISC W/ PUNCH IN CONC. IN CURB (FIELD)

FOUND 2" BRASS DISC W/ PUNCH IN CONC. IN CURB (FIELD)

FOUND 2" BRASS DISC W/ PUNCH IN CONC. IN CURB (FIELD)

FOUND 2" BRASS DISC W/ PUNCH IN CONC. IN CURB (FIELD)

FOUND 2" BRASS DISC W/ PUNCH IN CONC. IN CURB (FIELD)

FOUND 2" BRASS DISC W/ PUNCH IN CONC. IN CURB (FIELD)

FOUND 2" BRASS DISC W/ PUNCH IN CONC. IN CURB (FIELD)

FOUND 2" BRASS DISC W/ PUNCH IN CONC. IN CURB (FIELD)

FOUND 2" BRASS DISC W/ PUNCH IN CONC. IN CURB (FIELD)

FOUND 2" BRASS DISC W/ PUNCH IN CONC. IN CURB (FIELD)

FOUND 2" BRASS DISC W/ PUNCH IN CONC. IN CURB (FIELD)

FOUND 2" BRASS DISC W/ PUNCH IN CONC. IN CURB (FIELD)

FOUND 2" BRASS DISC W/ PUNCH IN CONC. IN CURB (FIELD)

FOUND 2" BRASS DISC W/ PUNCH IN CONC. IN CURB (FIELD)

FOUND 2" BRASS DISC W/ PUNCH IN CONC. IN CURB (FIELD)

FOUND 2" BRASS DISC W/ PUNCH IN CONC. IN CURB (FIELD)

FOUND 2" BRASS DISC W/ PUNCH IN CONC. IN CURB (FIELD)

FOUND 2" BRASS DISC W/ PUNCH IN CONC. IN CURB (FIELD)

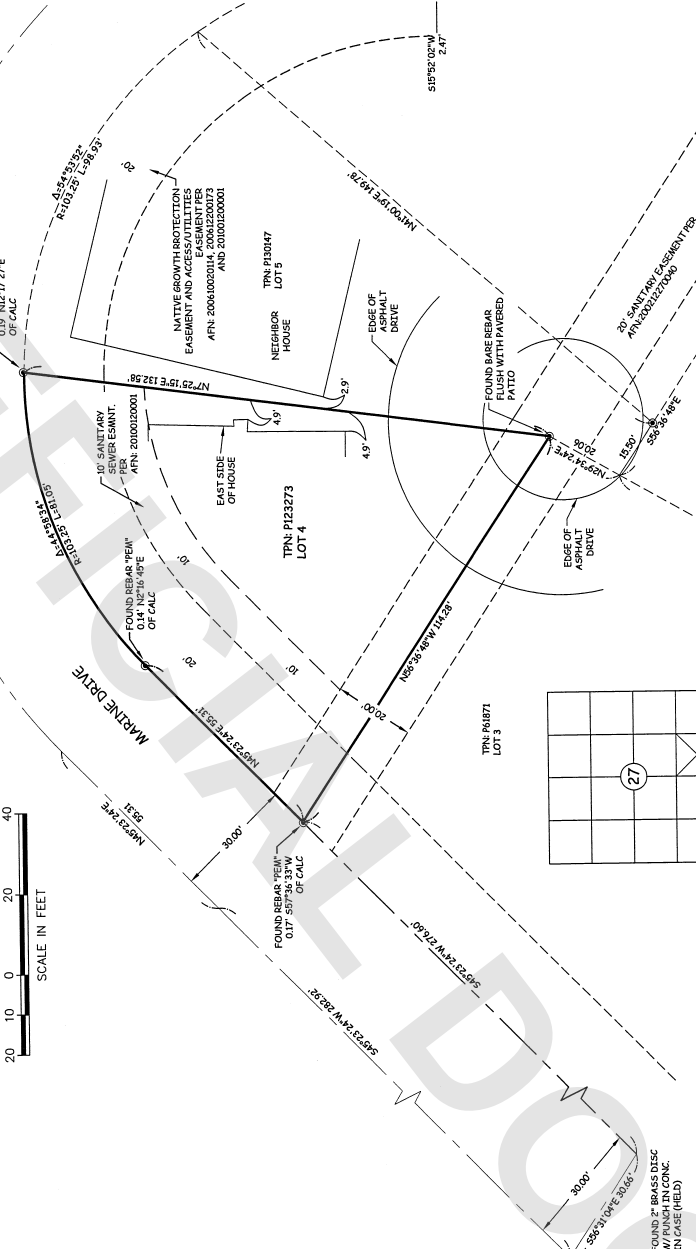
FOUND 2" BRASS DISC W/ PUNCH IN CONC. IN CURB (FIELD)

FOUND 2" BRASS DISC W/ PUNCH IN CONC. IN CURB (FIELD)

FOUND 2" BRASS DISC W/ PUNCH IN CONC. IN CURB (FIELD)

LEGEND

- FOUND REBAR & CAP PERM L.S. 25971' AS NOTED
- FOUND MONUMENT IN CASE AS NOTED
- TPN TAX PARCEL NUMBER
- SUBJECT PROPERTY LINE
- ADJACENT PARCEL LINE
- ROAD CENTER LINE
- ROAD RIGHT-OF-WAY LINE
- HOUSE SIDE WALLS



INDEX



RECORD OF SURVEY

PREPARED AT THE REQUEST OF
AARON MAYS
A PORTION OF THE SW 1/4, OF THE SE 1/4,
SECTION 27, TOWNSHIP 35 NORTH, RANGE 1
EAST, W.M. SKAGITT COUNTY, WA

STAR SURVEYING, INC.
Phone - (360)399-7693
info.star@rockland.com
www.starurveying.com
LAND SURVEYING MAPPING PLANNING

CAD BY: BLP/AK	DATE: 11/1/2023	JOB NO: A2576
CHK BY: BMA	PAGE 1 OF 1	SCALE: 1" = 20'
FLD BK: A507	A2576.DWG	CIVIL 3D 2020
SURVEYED BY FIELD TRAVERSE WITH A TRIMBLE S-4 ROBOTIC SYSTEM		

SURVEYOR'S CERTIFICATE
THIS MAP CORRECTLY REPRESENTS A SURVEY MADE BY ME OR UNDER MY DIRECTION IN CONFORMANCE WITH THE REQUIREMENTS OF THE SURVEY RECORDING ACT AT THE REQUEST OF AARON MAYS IN NOVEMBER, 2023.

Robert W. Anderson
ROBERT W. ANDERSON
CERTIFICATE NUMBER LS 19612

Sandra Perkins
SKAGITT COUNTY AUDITOR

AUDITOR'S CERTIFICATE
FILED FOR RECORD THIS 12 DAY OF February, 2024, AT 8:41 AM
IN BOOK _____ OF SURVEYS AT PAGE _____ AT THE REQUEST OF AARON MAYS

256702766670
FILE NUMBER

