

**SURVEY DESCRIPTION**

LOT A (EXHIBIT 'C' SKAGIT COUNTY AUDITOR'S FILE NO. 202404020054)  
 THAT PORTIONS OF LOTS 11, 12 AND 13, BLOCK 66, "AMENDED PLAT OF BURLINGTON SKAGIT COUNTY, WASH.," AS PER PLAT RECORDED IN VOLUME 3 OF PLATS, PAGE 17, RECORDS OF SKAGIT COUNTY, WASHINGTON LYING NORTH OF THE FOLLOWING DESCRIBED LINE:  
 COMMENCING AT THE SOUTHWEST CORNER OF LOT 11, BLOCK 66, SAID AMENDED PLAT OF BURLINGTON, SKAGIT COUNTY, WASH.;  
 THENCE NORTH 00°00'22" WEST, ALONG THE WEST LINE OF LOT 11, ALSO BEING THE EAST MARGIN OF SOUTH REGENT STREET, FOR A DISTANCE OF 14.82 FEET TO THE POINT OF BEGINNING OF SAID LINE;  
 THENCE SOUTH 84°54'51" EAST FOR A DISTANCE OF 30.00 FEET;  
 THENCE NORTH 00°00'22" WEST FOR A DISTANCE OF 30.00 FEET;  
 THENCE SOUTH 84°54'51" EAST FOR A DISTANCE OF 14.82 FEET, MORE OR LESS, TO A POINT ON THE EAST LINE OF LOT 13, BLOCK 66, SAID AMENDED PLAT OF BURLINGTON, SKAGIT COUNTY, WASH. AT A POINT BEARING NORTH 00°00'22" WEST AND A DISTANCE OF 14.82 FEET FROM THE SOUTHWEST CORNER OF SAID LOT 13 AND BEING THE TERMINUS OF SAID LINE.

SUBJECT TO AN EASEMENT FOR SANITARY SEWER PURPOSES OVER A PORTION OF SAID LOT 13 AS SHOWN ON A SANITARY SEWER MAP OF BURLINGTON, SKAGIT COUNTY, WASH., AS PER PLAT RECORDED IN VOLUME 3 OF PLATS, PAGE 17, RECORDS OF SKAGIT COUNTY, WASHINGTON, DESCRIBED AS FOLLOWS:  
 BEGINNING AT THE NORTHEAST CORNER OF SAID LOT 13,  
 THENCE SOUTH 00°00'22" EAST ALONG THE EAST LINE OF SAID LOT 13, NORTH 00°00'22" WEST, MORE OR LESS, TO A POINT BEARING SOUTHEAST CORNER OF SAID LOT 13,  
 THENCE NORTH 84°54'51" EAST FOR A DISTANCE OF 14.00 FEET;  
 THENCE NORTH 45°48'43" EAST FOR A DISTANCE OF 24.00 FEET, MORE OR LESS, TO THE NORTH LINE OF SAID LOT 13, AT A POINT BEARING NORTH 00°00'22" WEST FOR A DISTANCE OF 24.00 FEET;  
 THENCE SOUTH 84°54'51" EAST ALONG THE NORTH LINE OF SAID LOT 13 FOR A DISTANCE OF 10.00 FEET, MORE OR LESS, TO THE NORTHEAST CORNER OF SAID LOT 13 TO THE POINT OF BEGINNING.  
 AND SUBJECT TO AN EASEMENT FOR SEWER PURPOSES RECORDED UNDER SKAGIT COUNTY AUDITOR'S FILE NO. 4041285,  
 SUBJECT TO AND TOGETHER WITH EASEMENTS, RESERVATIONS, RESTRICTIONS, COVENANTS, LIENS, LEASES, COURT CAUSES AND OTHER INSTRUMENTS OF RECORD.  
 SITUATE IN THE CITY OF BURLINGTON, COUNTY OF SKAGIT, STATE OF WASHINGTON.

LOT B (EXHIBIT 'B' SKAGIT COUNTY AUDITOR'S FILE NO. 202404020054)  
 THAT PORTIONS OF LOTS 11, 12 AND 13, BLOCK 66, "AMENDED PLAT OF BURLINGTON SKAGIT COUNTY, WASH.," AS PER PLAT RECORDED IN VOLUME 3 OF PLATS, PAGE 17, RECORDS OF SKAGIT COUNTY, WASHINGTON LYING SOUTH OF THE FOLLOWING DESCRIBED LINE:  
 COMMENCING AT THE SOUTHWEST CORNER OF LOT 11, BLOCK 66, SAID AMENDED PLAT OF BURLINGTON, SKAGIT COUNTY, WASH.;  
 THENCE NORTH 00°00'22" WEST, ALONG THE WEST LINE OF LOT 11, ALSO BEING THE EAST MARGIN OF SOUTH REGENT STREET, FOR A DISTANCE OF 64.94 FEET TO THE TRUE POINT OF BEGINNING OF SAID LINE;  
 THENCE SOUTH 84°54'51" EAST FOR A DISTANCE OF 41.00 FEET;  
 THENCE SOUTH 00°00'22" WEST FOR A DISTANCE OF 30.00 FEET;  
 THENCE SOUTH 84°54'51" EAST FOR A DISTANCE OF 30.00 FEET;  
 THENCE NORTH 00°00'22" WEST FOR A DISTANCE OF 2.23 FEET, MORE OR LESS, TO A POINT ON THE EAST LINE OF LOT 13, BLOCK 66, SAID AMENDED PLAT OF BURLINGTON, SKAGIT COUNTY, WASH., AT A POINT BEARING NORTH 00°00'22" WEST AND A DISTANCE OF 14.82 FEET FROM THE SOUTHWEST CORNER OF SAID LOT 13 AND BEING THE TERMINUS OF SAID LINE.  
 TOGETHER WITH AN EASEMENT FOR SANITARY SEWER PURPOSES OVER A PORTION OF LOT 13, BLOCK 66, "AMENDED PLAT OF BURLINGTON SKAGIT COUNTY, WASH.," AS PER PLAT RECORDED IN VOLUME 3 OF PLATS, PAGE 17, RECORDS OF SKAGIT COUNTY, WASHINGTON, DESCRIBED AS FOLLOWS:

**SURVEY DESCRIPTION (CONTINUED)**

BEGINNING AT THE NORTHEAST CORNER OF SAID LOT 13,  
 THENCE SOUTH 00°00'22" EAST ALONG THE EAST LINE OF SAID LOT 13, FOR A DISTANCE OF 35.06 FEET, MORE OR LESS, TO A POINT BEARING NORTH 00°00'22" WEST, A DISTANCE OF 14.82 FEET FROM THE SOUTHWEST CORNER OF SAID LOT 13,  
 THENCE NORTH 00°00'22" WEST, A DISTANCE OF 14.82 FEET;  
 THENCE NORTH 45°48'43" EAST FOR A DISTANCE OF 12.77 FEET;  
 THENCE NORTH 00°00'22" WEST FOR A DISTANCE OF 24.00 FEET, MORE OR LESS, TO THE NORTH LINE OF SAID LOT 13, AT A POINT BEARING NORTH 84°54'51" WEST FROM THE POINT OF BEGINNING;  
 THENCE SOUTH 84°54'51" EAST ALONG THE NORTH LINE OF SAID LOT 13 FOR A DISTANCE OF 10.00 FEET, MORE OR LESS, TO THE NORTHEAST CORNER OF SAID LOT 13 TO THE POINT OF BEGINNING.  
 SUBJECT TO AND TOGETHER WITH EASEMENTS, RESERVATIONS, RESTRICTIONS, COVENANTS, LIENS, LEASES, COURT CAUSES AND OTHER INSTRUMENTS OF RECORD.  
 SITUATE IN THE CITY OF BURLINGTON, COUNTY OF SKAGIT, STATE OF WASHINGTON.

**NOTES**

- 1. INDICATES REBAR SET AND CAPPED WITH YELLOW CAP INCREASING USER 2012164
- 2. INDICATES EXISTING PIPE OR REBAR FOUND AS NOTED
- 3. DESCRIPTION FOR THIS SURVEY IS BASED UPON QUIT CLAIM DEED BOUNDARY LINE ADJUSTMENT EXHIBITS B AND C, RECORDED UNDER SKAGIT COUNTY AUDITOR'S FILE NUMBER 202404020054.
- 4. FOR ADDITIONAL SURVEY AND SUBDIVISION INFORMATION SEE AMENDED PLAT OF BURLINGTON, SKAGIT COUNTY, WASH. RECORDED IN VOLUME 3 OF PLATS, PAGE 17, RECORD OF SURVEY MAPS RECORDED UNDER AUDITOR'S FILE NUMBERS 2013052802746, 201912100283, 201912210034, 201912300283, AND 2008605020190. ALL IN RECORDS OF SKAGIT COUNTY AUDITOR.
- 5. INSTRUMENTATION: TRIPLE 5-5 TOTAL STATION
- 6. SURVEY PROCEDURE: STANDARD FIELD TRAVERSE
- 7. MERIDIAN: ASSIGNED
- 8. BASIS OF BEARING: NONMENTED CENTERLINE OF ORANGE AVENUE BETWEEN SOUTH REGENT STREET AND SOUTH SKAGIT STREET BEARING = SOUTH 84°54'52" EAST
- 9. THIS SURVEY WAS PERFORMED AT THE REQUEST OF DOUGLAS BARNET AND KIMBERLY BARNET, HUSBAND AND WIFE, FOR THE DELINEATION AND STAKING OF THE DESCRIBED PROPERTY, AS SHOWN.
- 10. EXCEPT AS SPECIFICALLY STATED OR SHOWN ON THIS SURVEY MAP, THIS SURVEY WAS PERFORMED IN ACCORDANCE WITH THE REQUIREMENTS WHICH MAY BE APPLICABLE TO THE SUBJECT REAL ESTATE EASEMENTS, RESTRICTIONS, ZONING OR OTHER LAND-USE REGULATIONS, NO TITLE REPORT WAS PROVIDED.
- 11. ALL DISTANCES SHOWN HEREON ARE IN U.S. SURVEY FEET.
- 12. THIS SURVEY FOUND OCCUPATIONAL INDICATORS (FENCES, SHED, DRIVEWAYS) AS PER IAC CHAPTER 332-180. LINES OF OCCUPATION MAY INDICATE AREAS FOR POTENTIAL CLAIMS OF UNREGISTERED OWNERSHIP. THIS BOUNDARY SURVEY HAS ONLY SHOWN THE RELATIONSHIP OF LINES OF OCCUPATION TO THE DEEDED LINES OF RECORD. NO RESOLUTION OF OCCUPATION OR UNREGISTERED OWNERSHIP HAS BEEN MADE OR IMPLIED BY THIS SURVEY.

**AUDITOR'S CERTIFICATE**

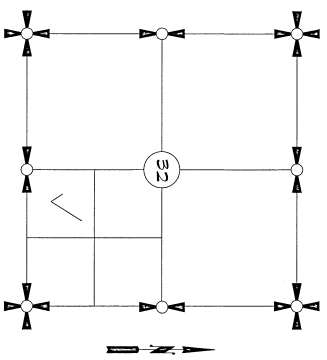
FILED FOR RECORD AT THE REQUEST OF LISSEER & ASSOCIATES, PLLC.  
 FILED FOR RECORD THIS 23 DAY OF APRIL 2024 AT 3H  
 MINUTES PAST 10 O'CLOCK P.M. IN THE OFFICE OF SURVEYS ON  
 PAGES 1 UNDER AUDITOR'S FILE NO. 2024 04230074  
 RECORDS OF SKAGIT COUNTY, WASHINGTON.

*Kevin Lisser*  
 SKAGIT COUNTY AUDITOR  
*David Baran*  
 DEPUTY

**SURVEYOR'S CERTIFICATE**

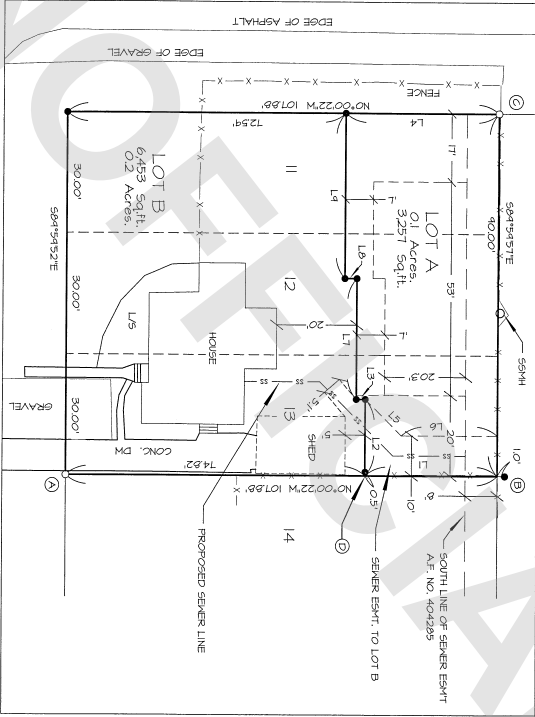
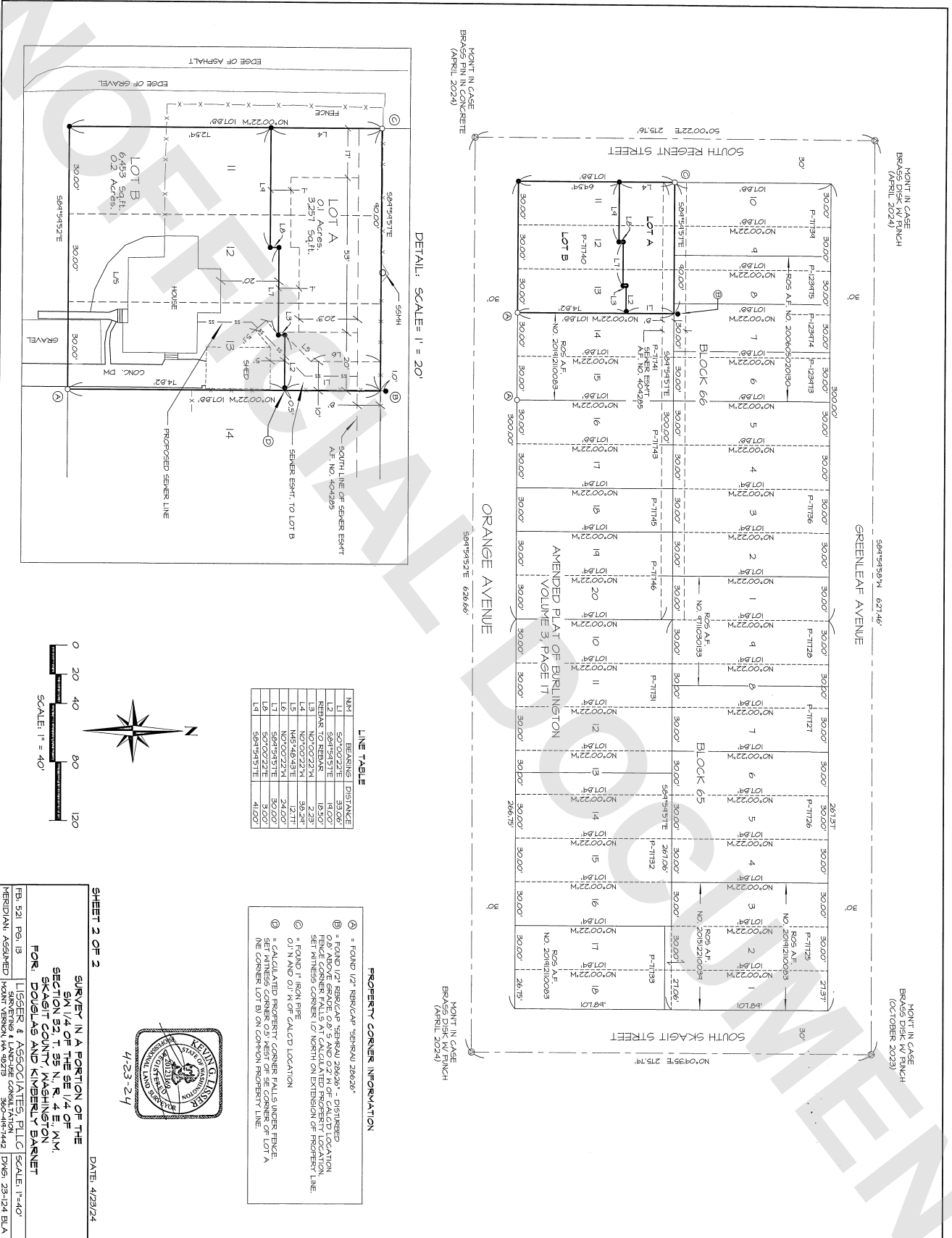
THIS MAP CORRECTLY REPRESENTS A SURVEY MADE BY ME OR UNDER MY DIRECTION IN CONFORMANCE WITH THE REQUIREMENTS OF THE SURVEY RECORDING ACT AT THE REQUEST OF DOUGLAS BARNET AND KIMBERLY BARNET, HUSBAND AND WIFE, IN MARCH 2024.

KEVIN S. LISSEER, PLLC, CERTIFICATE NO. 2012164 DATE 4-23-24  
 LISSEER & ASSOCIATES, PLLC  
 320 WILKAREE STRIP BOX 1104  
 POINT BELLUM, WA 98224  
 PHONE: (360) 418-0981  
 FAX: (360) 418-0981  
 E-MAIL: KEVIN@LISSEER.COM



SECTION 32, TOWNSHIP 35 NORTH, RANGE 4 EAST, 1M1.  
 VICINITY MAP  
 N24

SHEET 1 OF 2		DATE: 4/23/24	
SURVEY IN A PORTION OF THE			
5M 1/4 OF THE SE 1/4 OF			
SECTION 32, T. 35 N., R. 4 E., 1M1.			
SKAGIT COUNTY, WASHINGTON			
FOR: DOUGLAS AND KIMBERLY BARNET			
Fo.	For.	LISSEER & ASSOCIATES, PLLC	DATE: 4/23/24
		SURVEYING & LAND-USE CONSULTATION	
		POINT BELLUM, WA 98224	
		360-418-0981	
		DRG: 23-124-BLA	



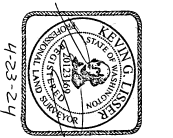
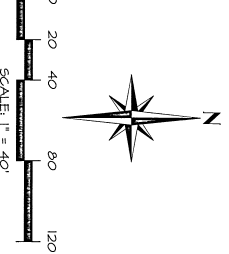
DETAIL: SCALE: 1" = 20'

LINE TABLE

LINE	BEARING	DISTANCE
L1	S07°00'22"W	33.00'
L2	S73°43'13"E	18.50'
L3	N07°00'22"W	2.23'
L4	N87°48'43"E	36.24'
L5	N87°48'43"E	12.71'
L6	S04°58'57"E	30.00'
L7	S07°00'22"W	3.00'
L8	S07°00'22"W	41.00'

PROPERTY CORNER INFORMATION

- ⓐ = FOUND 1/2" BRASS CAP - SERIAL# 28828\*
- Ⓑ = FOUND 1/2" BRASS CAP - SERIAL# 28830\* - DISTURBED
- Ⓒ = FOUND 1/2" BRASS CAP - SERIAL# 28832\* - DISTURBED
- Ⓓ = FOUND 1/2" BRASS CAP - SERIAL# 28834\* - DISTURBED
- Ⓔ = FOUND 1/2" BRASS CAP - SERIAL# 28836\* - DISTURBED
- Ⓕ = FOUND 1/2" BRASS CAP - SERIAL# 28838\* - DISTURBED
- Ⓖ = FOUND 1/2" BRASS CAP - SERIAL# 28840\* - DISTURBED
- Ⓗ = FOUND 1/2" BRASS CAP - SERIAL# 28842\* - DISTURBED
- Ⓙ = FOUND 1/2" BRASS CAP - SERIAL# 28844\* - DISTURBED
- ⓓ = FOUND 1/2" BRASS CAP - SERIAL# 28846\* - DISTURBED
- ⓔ = FOUND 1/2" BRASS CAP - SERIAL# 28848\* - DISTURBED
- ⓖ = FOUND 1/2" BRASS CAP - SERIAL# 28850\* - DISTURBED
- ⓗ = FOUND 1/2" BRASS CAP - SERIAL# 28852\* - DISTURBED
- Ⓢ = FOUND 1/2" BRASS CAP - SERIAL# 28854\* - DISTURBED
- Ⓣ = FOUND 1/2" BRASS CAP - SERIAL# 28856\* - DISTURBED
- Ⓤ = FOUND 1/2" BRASS CAP - SERIAL# 28858\* - DISTURBED
- Ⓥ = FOUND 1/2" BRASS CAP - SERIAL# 28860\* - DISTURBED
- Ⓦ = FOUND 1/2" BRASS CAP - SERIAL# 28862\* - DISTURBED
- Ⓧ = FOUND 1/2" BRASS CAP - SERIAL# 28864\* - DISTURBED
- Ⓨ = FOUND 1/2" BRASS CAP - SERIAL# 28866\* - DISTURBED
- Ⓩ = FOUND 1/2" BRASS CAP - SERIAL# 28868\* - DISTURBED
- ⓞ = FOUND 1/2" BRASS CAP - SERIAL# 28870\* - DISTURBED
- ⓐ = FOUND 1/2" BRASS CAP - SERIAL# 28872\* - DISTURBED
- ⓑ = FOUND 1/2" BRASS CAP - SERIAL# 28874\* - DISTURBED
- ⓒ = FOUND 1/2" BRASS CAP - SERIAL# 28876\* - DISTURBED
- ⓓ = FOUND 1/2" BRASS CAP - SERIAL# 28878\* - DISTURBED
- ⓔ = FOUND 1/2" BRASS CAP - SERIAL# 28880\* - DISTURBED
- ⓖ = FOUND 1/2" BRASS CAP - SERIAL# 28882\* - DISTURBED
- ⓗ = FOUND 1/2" BRASS CAP - SERIAL# 28884\* - DISTURBED
- Ⓢ = FOUND 1/2" BRASS CAP - SERIAL# 28886\* - DISTURBED
- Ⓣ = FOUND 1/2" BRASS CAP - SERIAL# 28888\* - DISTURBED
- Ⓤ = FOUND 1/2" BRASS CAP - SERIAL# 28890\* - DISTURBED
- Ⓥ = FOUND 1/2" BRASS CAP - SERIAL# 28892\* - DISTURBED
- Ⓦ = FOUND 1/2" BRASS CAP - SERIAL# 28894\* - DISTURBED
- Ⓧ = FOUND 1/2" BRASS CAP - SERIAL# 28896\* - DISTURBED
- Ⓨ = FOUND 1/2" BRASS CAP - SERIAL# 28898\* - DISTURBED
- Ⓩ = FOUND 1/2" BRASS CAP - SERIAL# 28900\* - DISTURBED
- ⓞ = FOUND 1/2" BRASS CAP - SERIAL# 28902\* - DISTURBED
- ⓐ = FOUND 1/2" BRASS CAP - SERIAL# 28904\* - DISTURBED
- ⓑ = FOUND 1/2" BRASS CAP - SERIAL# 28906\* - DISTURBED
- ⓒ = FOUND 1/2" BRASS CAP - SERIAL# 28908\* - DISTURBED
- ⓓ = FOUND 1/2" BRASS CAP - SERIAL# 28910\* - DISTURBED
- ⓔ = FOUND 1/2" BRASS CAP - SERIAL# 28912\* - DISTURBED
- ⓖ = FOUND 1/2" BRASS CAP - SERIAL# 28914\* - DISTURBED
- ⓗ = FOUND 1/2" BRASS CAP - SERIAL# 28916\* - DISTURBED
- Ⓢ = FOUND 1/2" BRASS CAP - SERIAL# 28918\* - DISTURBED
- Ⓣ = FOUND 1/2" BRASS CAP - SERIAL# 28920\* - DISTURBED
- Ⓤ = FOUND 1/2" BRASS CAP - SERIAL# 28922\* - DISTURBED
- Ⓥ = FOUND 1/2" BRASS CAP - SERIAL# 28924\* - DISTURBED
- Ⓦ = FOUND 1/2" BRASS CAP - SERIAL# 28926\* - DISTURBED
- Ⓧ = FOUND 1/2" BRASS CAP - SERIAL# 28928\* - DISTURBED
- Ⓨ = FOUND 1/2" BRASS CAP - SERIAL# 28930\* - DISTURBED
- Ⓩ = FOUND 1/2" BRASS CAP - SERIAL# 28932\* - DISTURBED
- ⓞ = FOUND 1/2" BRASS CAP - SERIAL# 28934\* - DISTURBED
- ⓐ = FOUND 1/2" BRASS CAP - SERIAL# 28936\* - DISTURBED
- ⓑ = FOUND 1/2" BRASS CAP - SERIAL# 28938\* - DISTURBED
- ⓒ = FOUND 1/2" BRASS CAP - SERIAL# 28940\* - DISTURBED
- ⓓ = FOUND 1/2" BRASS CAP - SERIAL# 28942\* - DISTURBED
- ⓔ = FOUND 1/2" BRASS CAP - SERIAL# 28944\* - DISTURBED
- ⓖ = FOUND 1/2" BRASS CAP - SERIAL# 28946\* - DISTURBED
- ⓗ = FOUND 1/2" BRASS CAP - SERIAL# 28948\* - DISTURBED
- Ⓢ = FOUND 1/2" BRASS CAP - SERIAL# 28950\* - DISTURBED
- Ⓣ = FOUND 1/2" BRASS CAP - SERIAL# 28952\* - DISTURBED
- Ⓤ = FOUND 1/2" BRASS CAP - SERIAL# 28954\* - DISTURBED
- Ⓥ = FOUND 1/2" BRASS CAP - SERIAL# 28956\* - DISTURBED
- Ⓦ = FOUND 1/2" BRASS CAP - SERIAL# 28958\* - DISTURBED
- Ⓧ = FOUND 1/2" BRASS CAP - SERIAL# 28960\* - DISTURBED
- Ⓨ = FOUND 1/2" BRASS CAP - SERIAL# 28962\* - DISTURBED
- Ⓩ = FOUND 1/2" BRASS CAP - SERIAL# 28964\* - DISTURBED
- ⓞ = FOUND 1/2" BRASS CAP - SERIAL# 28966\* - DISTURBED
- ⓐ = FOUND 1/2" BRASS CAP - SERIAL# 28968\* - DISTURBED
- ⓑ = FOUND 1/2" BRASS CAP - SERIAL# 28970\* - DISTURBED
- ⓒ = FOUND 1/2" BRASS CAP - SERIAL# 28972\* - DISTURBED
- ⓓ = FOUND 1/2" BRASS CAP - SERIAL# 28974\* - DISTURBED
- ⓔ = FOUND 1/2" BRASS CAP - SERIAL# 28976\* - DISTURBED
- ⓖ = FOUND 1/2" BRASS CAP - SERIAL# 28978\* - DISTURBED
- ⓗ = FOUND 1/2" BRASS CAP - SERIAL# 28980\* - DISTURBED
- Ⓢ = FOUND 1/2" BRASS CAP - SERIAL# 28982\* - DISTURBED
- Ⓣ = FOUND 1/2" BRASS CAP - SERIAL# 28984\* - DISTURBED
- Ⓤ = FOUND 1/2" BRASS CAP - SERIAL# 28986\* - DISTURBED
- Ⓥ = FOUND 1/2" BRASS CAP - SERIAL# 28988\* - DISTURBED
- Ⓦ = FOUND 1/2" BRASS CAP - SERIAL# 28990\* - DISTURBED
- Ⓧ = FOUND 1/2" BRASS CAP - SERIAL# 28992\* - DISTURBED
- Ⓨ = FOUND 1/2" BRASS CAP - SERIAL# 28994\* - DISTURBED
- Ⓩ = FOUND 1/2" BRASS CAP - SERIAL# 28996\* - DISTURBED
- ⓞ = FOUND 1/2" BRASS CAP - SERIAL# 28998\* - DISTURBED
- ⓐ = FOUND 1/2" BRASS CAP - SERIAL# 29000\* - DISTURBED



**SHEET 2 OF 2** DATE: 4/23/24  
**SURVEY IN A PORTION OF THE**  
**5N 1/4 OF THE SE 1/4 OF**  
**SECTION 32, T. 35 N., R. 4 E., 1M,**  
**SKAGIT COUNTY, WASHINGTON**  
**FOR: DOUGLAS AND KIMBERLY BARNET**  
 LISSEER & ASSOCIATES PLLC | SCALE: 1"=40'  
 SURVEYING & LAND-USE CONSULTATION  
 360-414-1142 | DWS-23-124 B/LA  
 HERIDIAN ASSIGNED