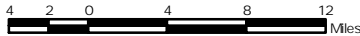
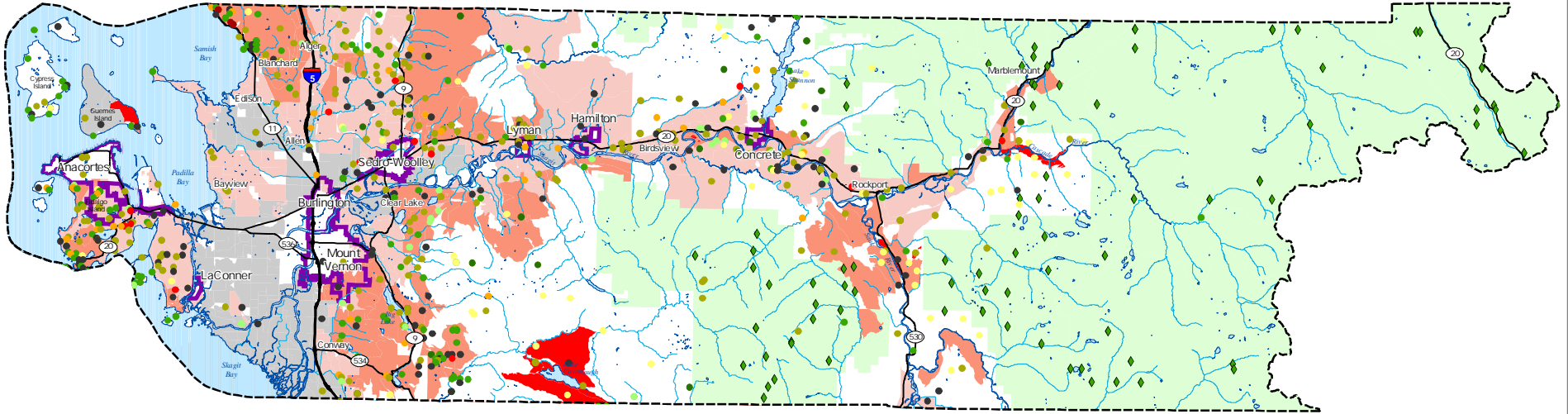


FIRE - 5

Skagit County Wildland-Urban Interface Fire Risk Assessment Based On NFPA 299 Risk Assessment & Fire Causes



Washington State



LEGEND

- | | | |
|-------------------------|------------------------|----------------|
| Interstate | Federal Lands | Lightning |
| State Route | Fires on Federal Lands | Incendiary |
| County Boundary | Current Risk | Recreation |
| Incorporated Area | Extreme fire hazard | Smokers |
| Major Water Body | High fire hazard | Debris Burning |
| River, Creek, or Stream | Moderate fire hazard | Logging |
| | Low fire hazard | Children |
| | Areas not assessed | Railroads |
| | | Miscellaneous |

Data Source Information:

County Boundary, Incorporated Areas, Hydrology and Road centerlines are maintained by Skagit County GIS. Wildfire data provided by Washington State Department of Natural Resources (WADNR) and was created using Risk Assessment & Mitigation Strategies (R.A.M.S.) software. Wildfire risk assessment is based on National Fire Protection Association (NFPA) 299 Risk Assessment. Wildfire locations and causes dated 1970-2001.



Map Created: 6-4-2003
Map Updated: 8-4-2003

This map was created from available public records and existing map sources, not from field surveys. Map features from all sources have been adjusted to achieve a "best fit" registration to the Ownership Parcels Map. While great care was taken in this process, maps from different sources rarely agree as to the precise location of geographic features. The relative positioning of map features to one another results from combining different map sources without field "ground truthing."