



# Hazard Mitigation

What Constitutes Mitigation?

Actions taken which, in the long-term, reduce the risk and/or impact of a hazard.

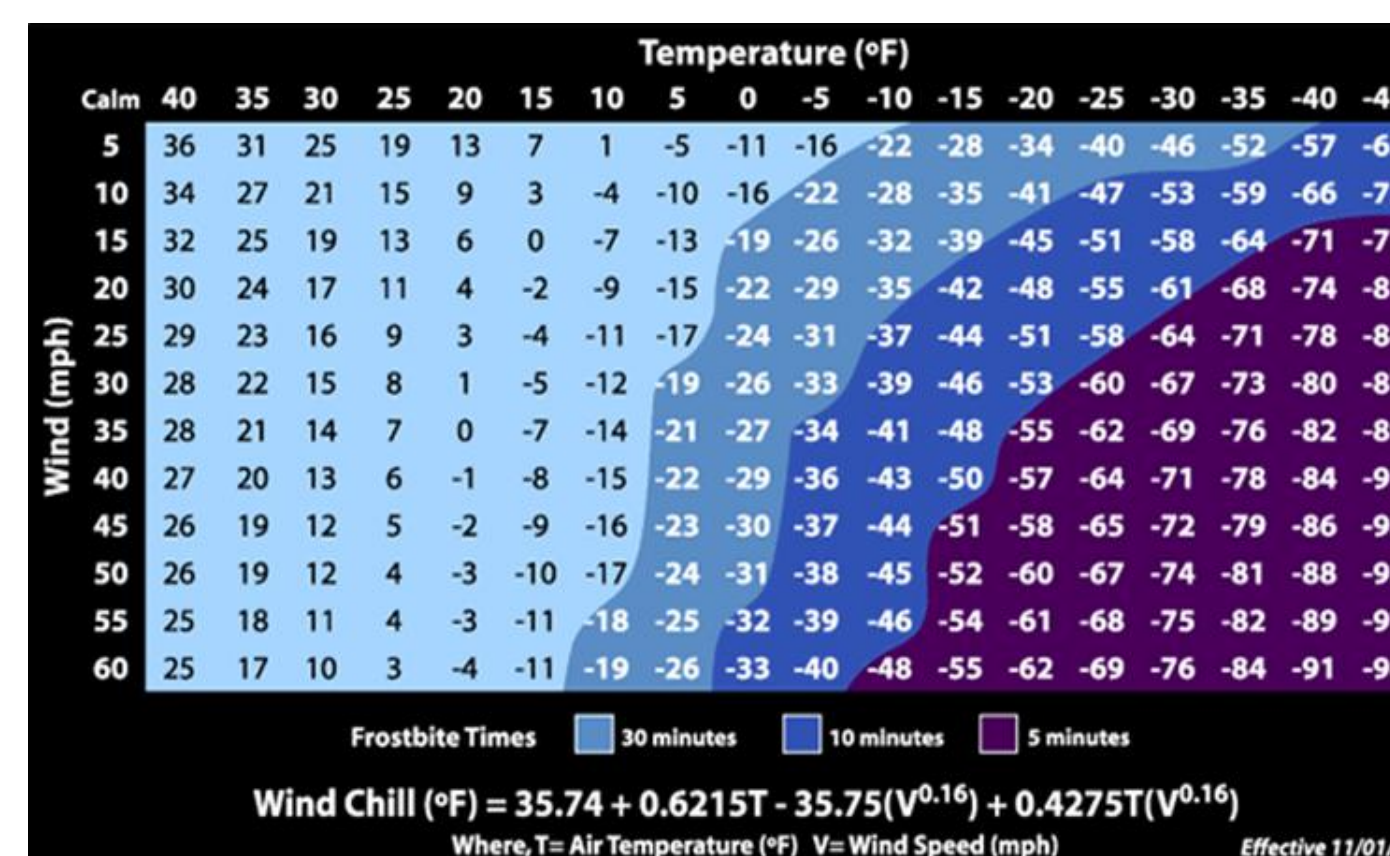


## Hazard Mitigation Plan Update

Skagit County, its local municipal jurisdictions, tribes, and special purpose districts are embarking on a planning process to prepare for impacts of natural disasters. Responding to federal mandates in the Disaster Mitigation Act of 2000 (Public Law 106-390), Skagit County Department of Emergency Management is updating its 2015 Hazard Mitigation Plan to enhance resilience throughout the County. During this process, local citizens will be asked to contribute by sharing knowledge of the area's vulnerability to hazards based on past occurrences. Check out the County's Hazard Mitigation Planning Website located on Skagit County's Emergency Management website!

## Why Plan? Between 1953 and 2017, Skagit County has experienced 18 Federal Disaster Declarations

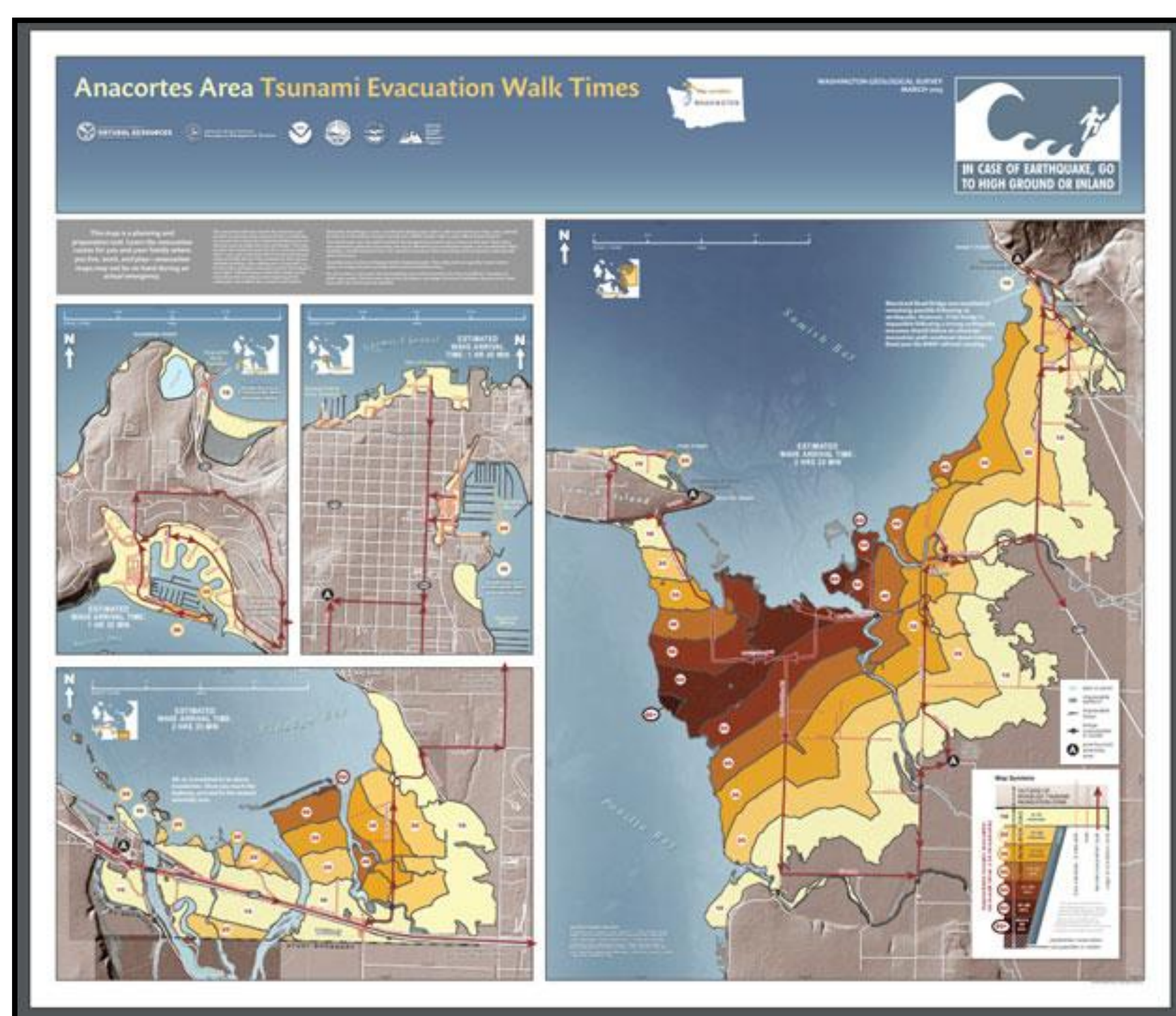
Skagit County Hazard Mitigation Plan Update Planning Partner Participation List (As of June 20, 2019)		
Cities	Towns	Tribal Nations
Anacortes	Concrete	Swinomish Indian Tribal Community
Burlington	Hamilton	Upper Skagit Indian Tribe
Mount Vernon	La Conner	Sauk-Suiattle Tribe
Sedro-Wolley	Lyman	
Special Purpose Districts		
Concrete School District	Island Hospital	Drainage District #16
Sedro-Woolley School District	Skagit County Conservation District	Dike District #12
La Conner School District	Skagit County Drainage District Consortium	Dike District #17



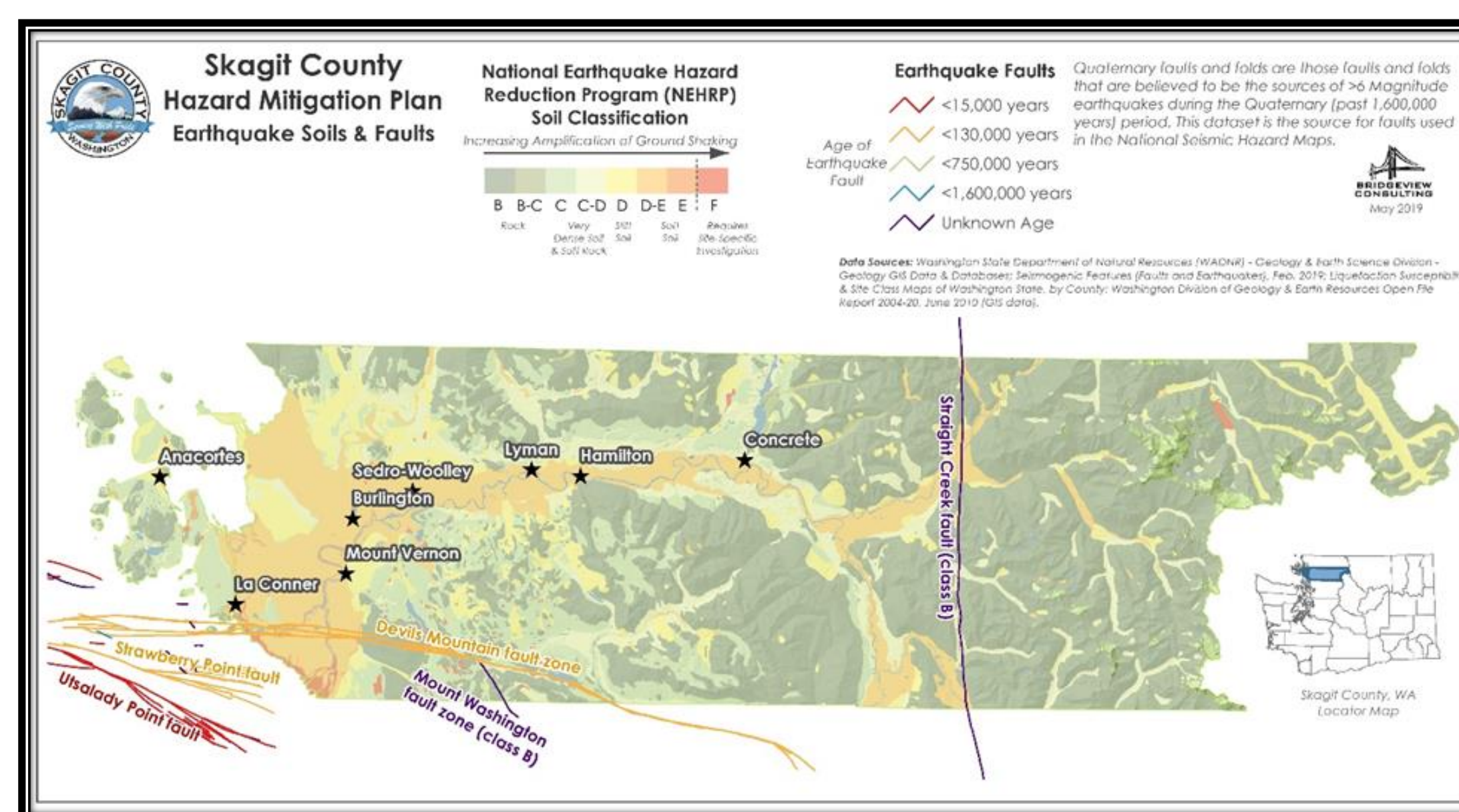
### Hazards addressed:

- Climate Change
- Drought
- Earthquake
- Flood
- Landslide
- Severe Weather
- Tsunami
- Wildfire
- Volcano

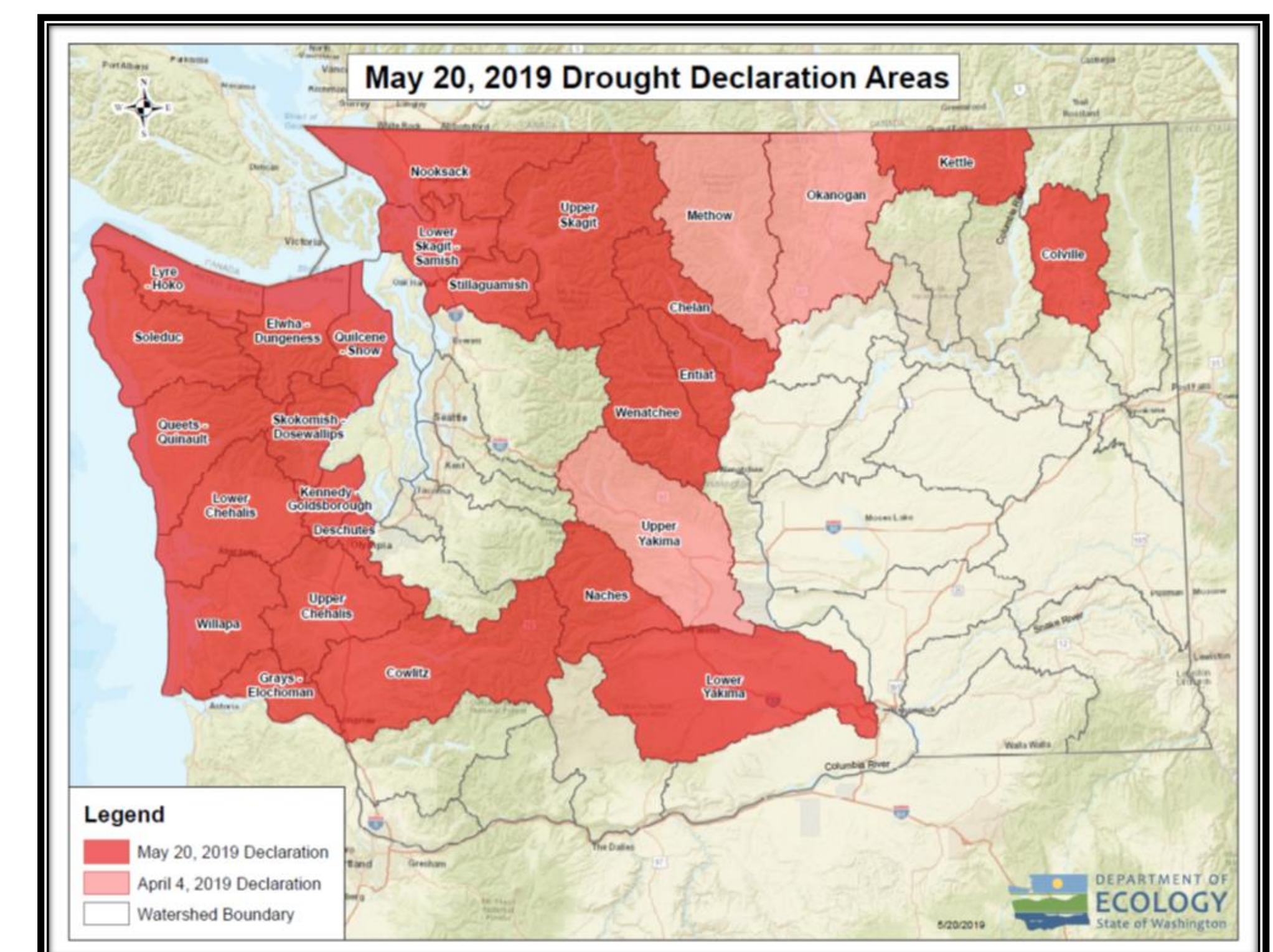
Skagit County Disaster History 1971-2018					
Disaster Number	Declaration Date	Incident Type	Title	Incident Begin Date	Incident End Date
1963	3/25/2011	Severe Storm(s)	Severe Winter Storm, Flooding, Landslides, and Mudslides	1/11/2011	1/21/2011
1825	3/2/2009	Severe Storm(s)	Severe Winter Storm, Record- and Near-Record Snow	12/12/2008	1/5/2009
1817	1/30/2009	Flood	Severe Winter Storm, Landslides, Mudslides, and Flooding	1/6/2009	1/16/2009
1734	12/8/2007	Severe Storm(s)	Severe Storms, Flooding, Landslides, and Mudslides	12/1/2007	12/17/2007
1682	2/14/2007	Severe Storm(s)	Severe Winter Storm, Landslides, and Mudslides	12/14/2006	12/15/2006
1671	12/12/2006	Severe Storm(s)	Severe Storms, Flooding, Landslides, and Mudslides	11/2/2006	11/11/2006
3227	9/7/2005	Coastal Storm	Hurricane Katrina Evacuation	8/29/2005	10/1/2005
1499	11/7/2003	Severe Storm(s)	Severe Storms and Flooding	10/15/2003	10/23/2003
1361	3/1/2001	Earthquake	Earthquake	2/28/2001	3/16/2001
1159	1/17/1997	Severe Storm(s)	Severe Winter Storms, Land- and Mud-slides, Flooding	12/26/1996	2/10/1997
1100	2/9/1996	Flood	High Winds, Severe Storms and Flooding	1/26/1996	2/23/1996
1079	1/3/1996	Severe Storm(s)	Severe Storms, High Wind, and Flooding	11/7/1995	12/18/1995
896	3/8/1991	Flood	Severe Storms and High Tides	12/20/1990	12/31/1990
883	11/26/1990	Flood	Severe Storms and Flooding	11/9/1990	12/20/1990
623	5/21/1980	Volcano	Volcanic Eruption - Mt. St. Helens	5/21/1980	5/21/1980
612	12/31/1979	Flood	Storms, High Tides, Mudslides and Flooding	12/31/1979	12/31/1979
492	12/13/1975	Flood	Severe Storms and Flooding	12/13/1975	12/13/1975
300	2/9/1971	Flood	Heavy Rains, Melting Snow and Flooding	2/9/1971	2/9/1971



Tsunami Evacuation



Earthquake Faults and Types of Soils



Drought Declarations as of May 2019

## Public Survey:

Interested in helping shape Skagit County's Hazard Mitigation Plan Update? Take our short survey by either scanning the QR code on your phone, or visit

[https://www.surveymonkey.com/r/Skagit County Mitigation Plan Survey](https://www.surveymonkey.com/r/Skagit%20County%20Mitigation%20Plan%20Survey)

