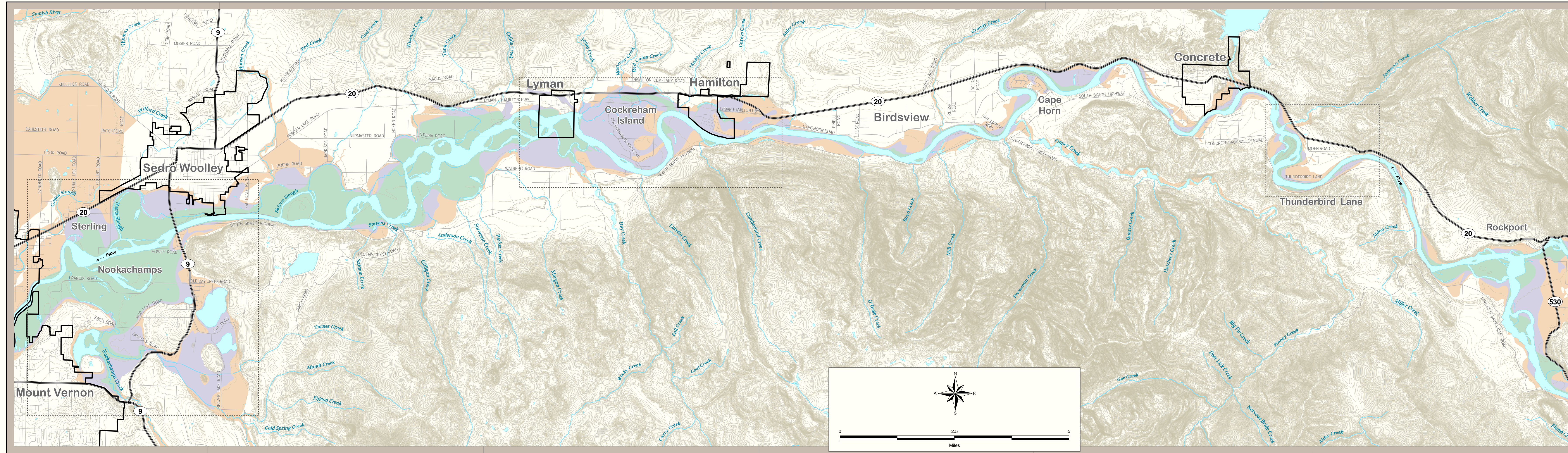


FLOOD WARNING MAP FOR THE SKAGIT RIVER VALLEY FROM NOOKACHAMPS AREA TO ROCKPORT AREA



PHASE DESCRIPTIONS

Phase 1 Flooding:

Phase 1 floods (shown as green on map) inundate low areas near the Skagit River, may cover a few small sections of roads, and occur every few years on the average. These floods generally do not cause significant damage in the Skagit River Valley. A large phase 1 flood occurred in December 1989.

Phase 2 Flooding:

Phase 2 floods (shown as purple on map) inundate a wider area and may cause significant damage. The large phase 2 flood depicted on this map is approximately what occurred in December 1975 which was estimated to be a 10-year event (a flood that would have a 10% chance of occurring on any given year)

Phase 3 Flooding:

Phase 3 floods (shown as orange on map) can cause catastrophic damage in the valley. The very large phase 3 flood depicted on this map is the FEMA mapped 100-year flood. This flood would have approximately a 1% chance of occurring on any given year. If such a flood were to occur, many hundreds of homes would be flooded, thousands of people may have to be evacuated, and numerous public facilities and businesses would be inundated. In some neighborhoods flood waters would be deep and currents swift. Many roads would become impassable and extremely dangerous to use. The 1990 & 1995 floods were smaller phase 3 floods. As a result portions of the phase 3 areas were flooded in 1990 and 1995.

Caution: Under extreme conditions a flood greater than the 100-year flood can occur.

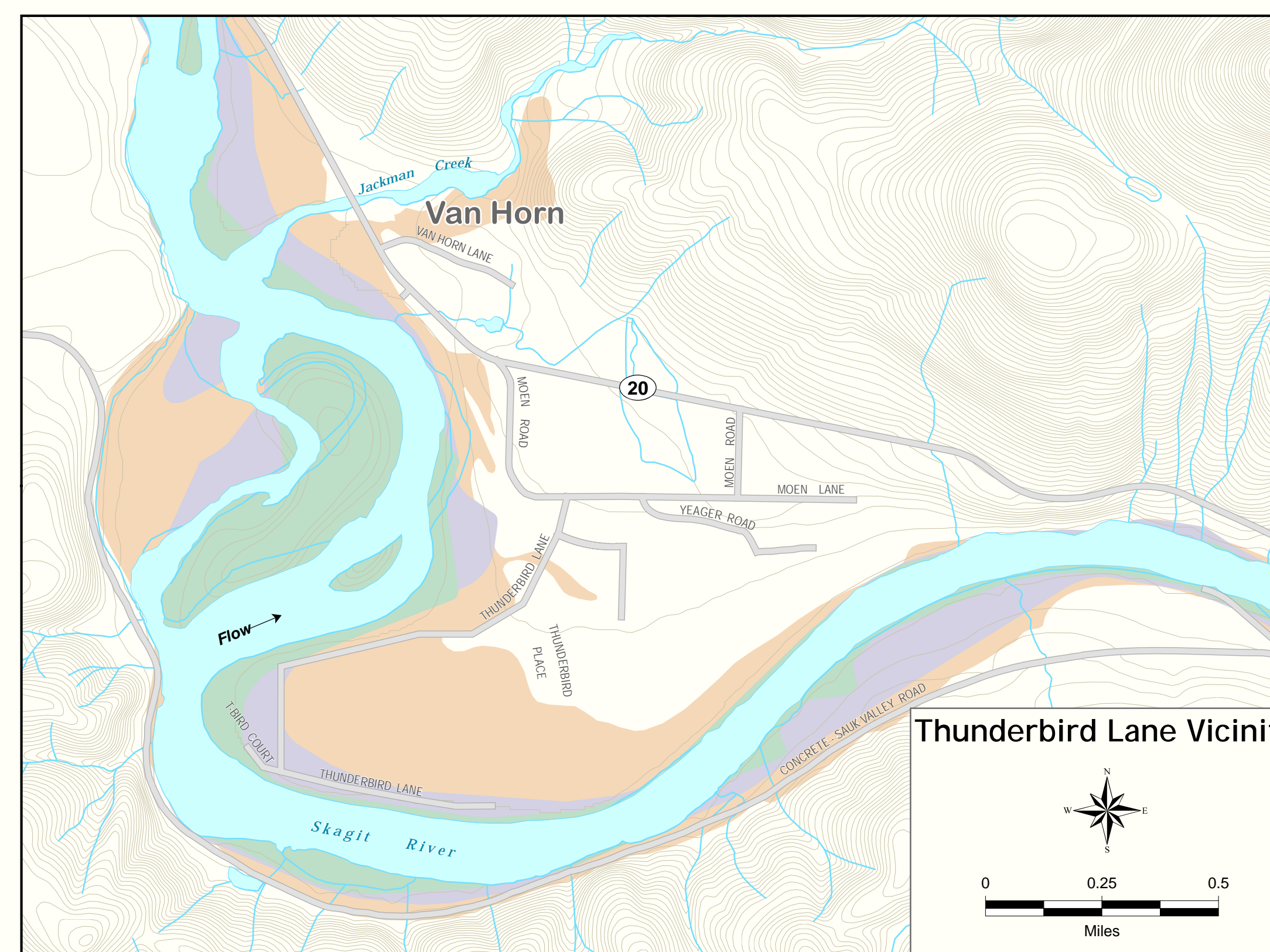
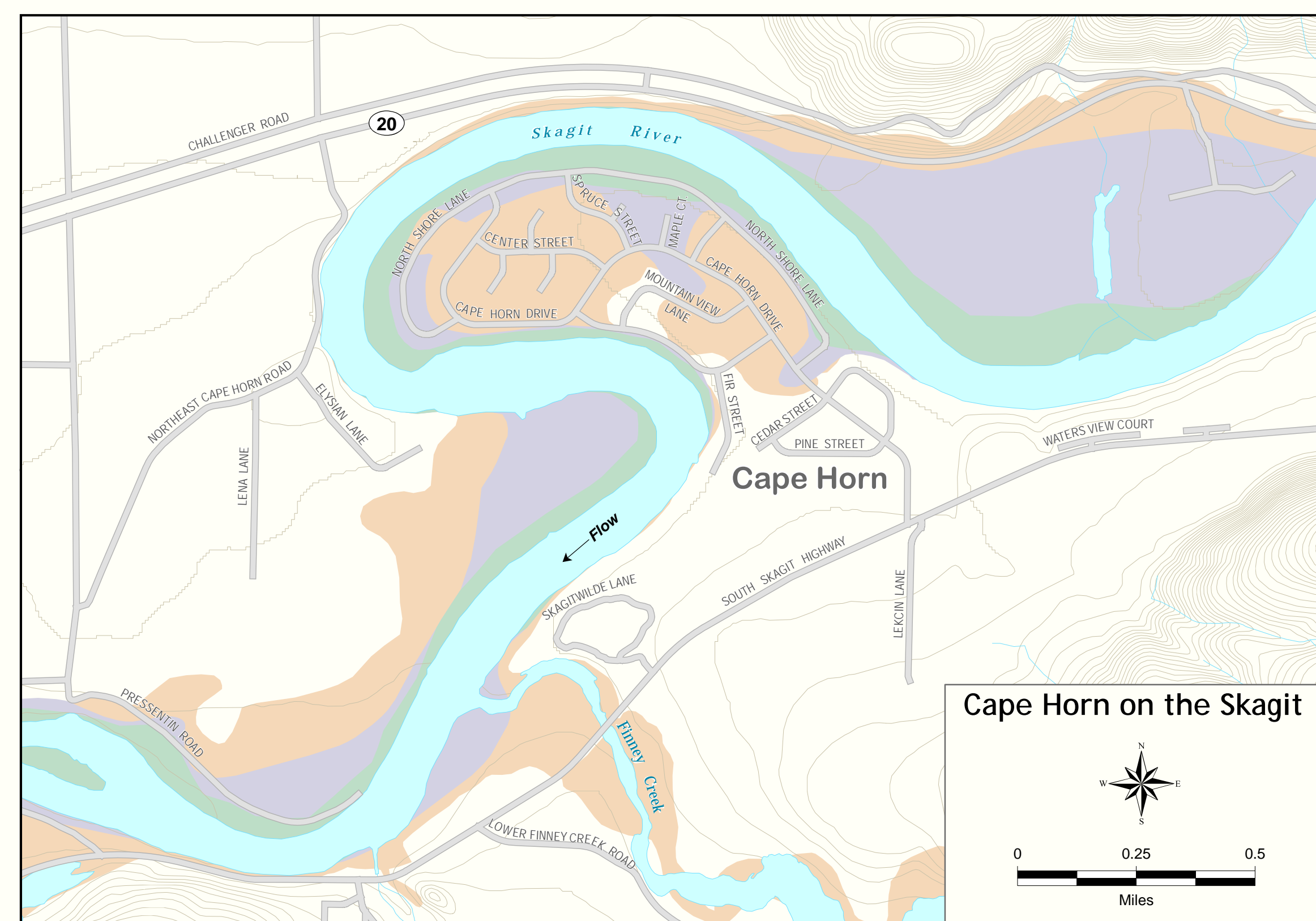
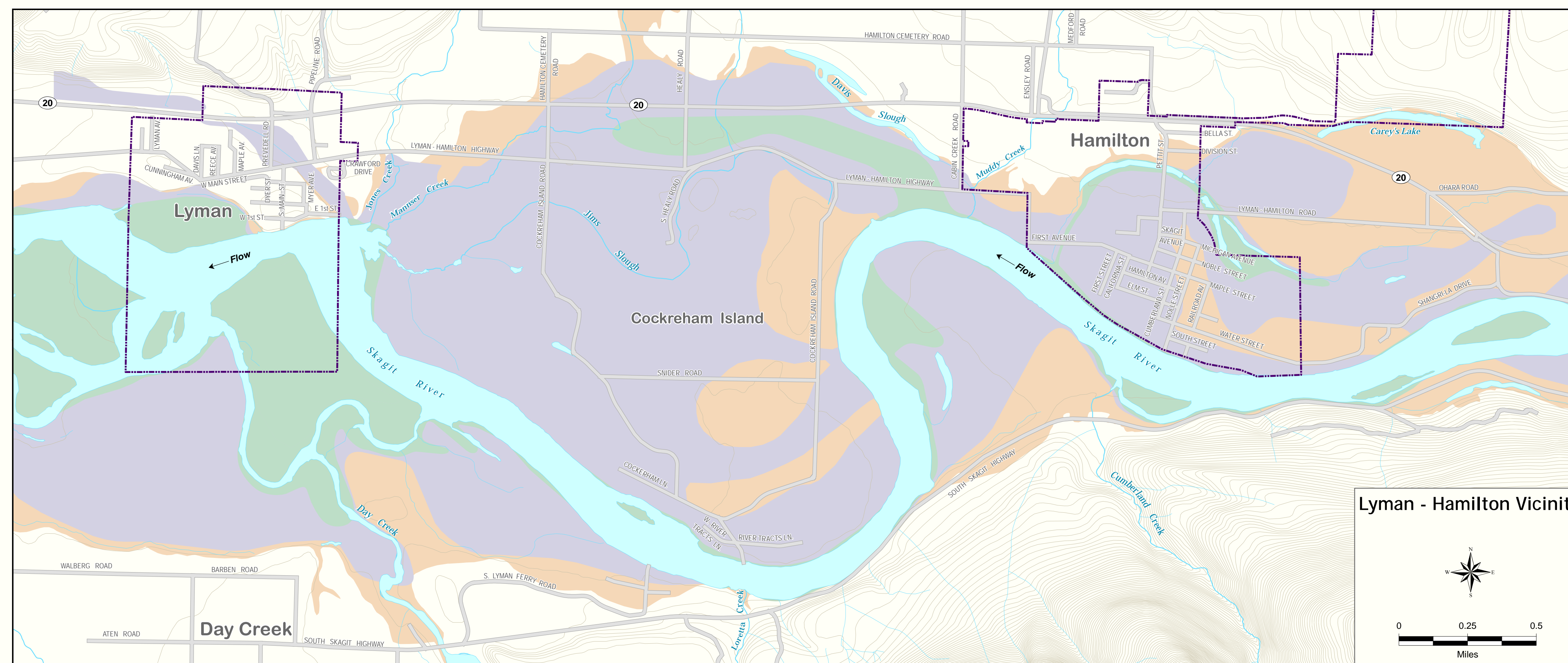
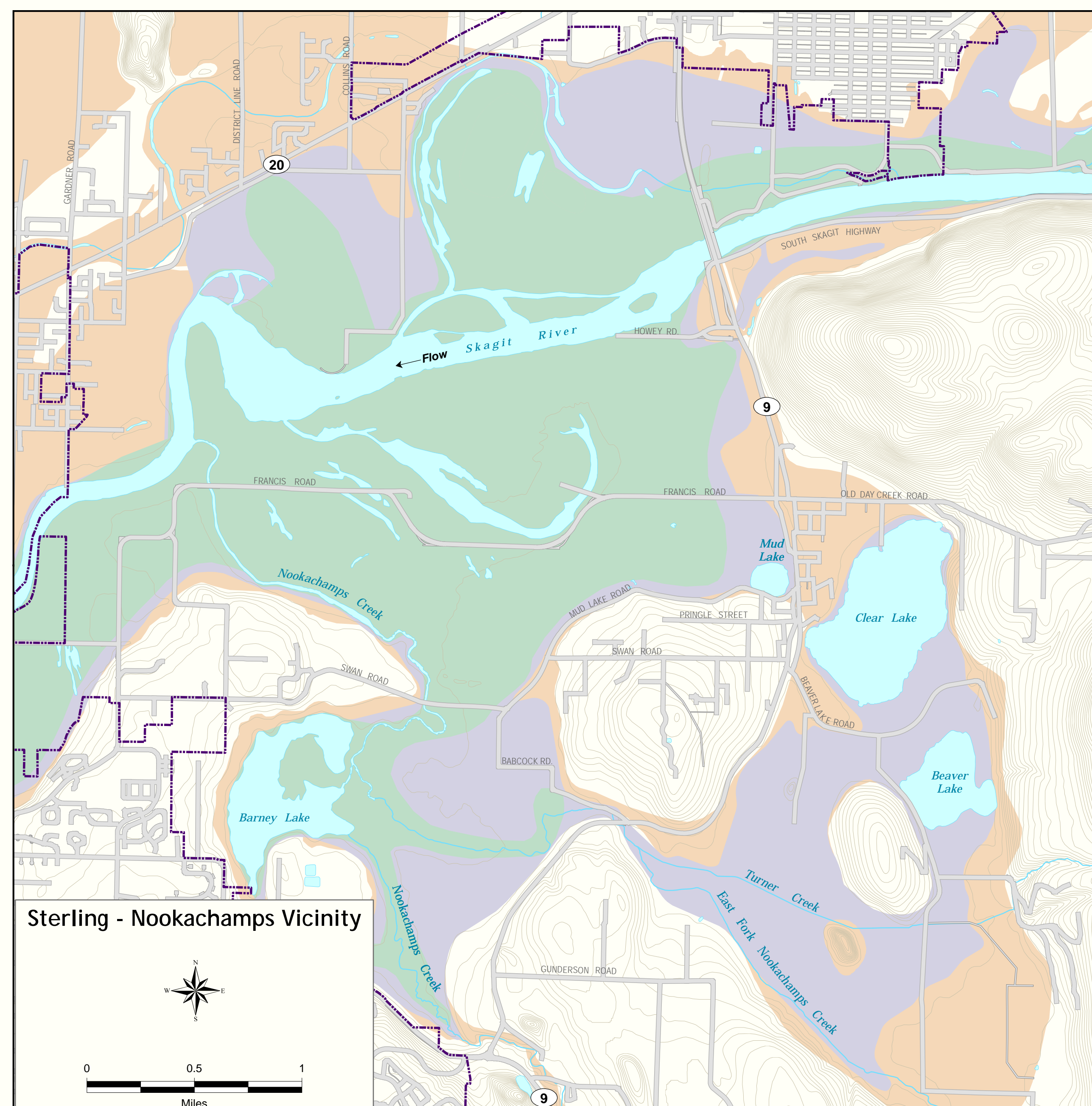
GAUGE HEIGHT AND PHASE

Skagit River Gauge near Concrete	Phase Ranges in Feet
This USGS gauge is located near the community of Concrete at river mile 54.1 on the Skagit River.	Phase 1 - 28.0 ft. to 32.0 ft.
	Phase 2 - 32.0 ft. to 37.0 ft.
	Phase 3 - 37.0 ft. to 48.8 ft.
Skagit River Gauge near Mount Vernon	Phase Ranges in Feet
This USGS gauge is located at the Riverside bridge on the main stem at river mile 17.0	Phase 1 - 28.0 ft. to 32.0 ft.
	Phase 2 - 32.0 ft. to 35.6 ft.
	Phase 3 - 35.6 ft. to 40+ ft.

Note:
Gauge heights (measured in feet) indicate level at which the flood phase begins at the gauge location. Flood severity may significantly increase as the flood moves from the upstream to the downstream locations.

Flood travel times from Concrete gauge to Mount Vernon Gauge are averages from past floods; actual travel times may vary depending on flood size, storm distribution, and other factors.

- Note 1:
The inundation limits shown on this map are for the purposes of flood emergency preparedness only. The flood limits shown are approximate and may not accurately correspond to the actual limits of any given flood due to the unique and complex nature of individual flood events.
- Note 2:
The phase areas on the map represent the areas that are likely to become inundated if the largest floods within each phase occur. Smaller floods within each phase may not inundate all of the phase area indicated.
- Note 3:
Creek flooding usually occurs prior to, and independent of, river flooding. The information on this map will not necessarily help predict creek flooding.
- Note 4:
Photographic evidence was used to map the phase 1 and phase 2 floods.
- Note 5:
This map was developed in 1996 by the U.S. Army Corps of Engineers and Skagit County Officials. For further information contact Skagit County Public Works, Surface Water Management Division.



Map Produced By: Skagit County GIS

Other Sources for Flood Information

- Skagit County Public Works Surface Water Management Div. at www.skagitcounty.net
- Skagit County Emergency Management Dept. at www.skagitcounty.net
- Federal Emergency Management Agency Hazards Page at www.fema.gov/hazard
- USGS Water Science Center at <http://lib.water.usgs.gov/training/ehs/skagit.html>
- US Army Corps of Engineers Flood Control Page at www.vtr.usace.army.mil/floodcontrol/default.htm

Town of Hamilton October 2003