

LEGEND

-  Adopted Urban Growth Area Boundary
-  Port of Skagit County Boundary
-  Commercial Developed Parcels*
-  Residential Developed Parcels*

* Status based on land use not zoning

Aerial Photo 2007

August 1, 2008



0 0.25 0.5
Miles

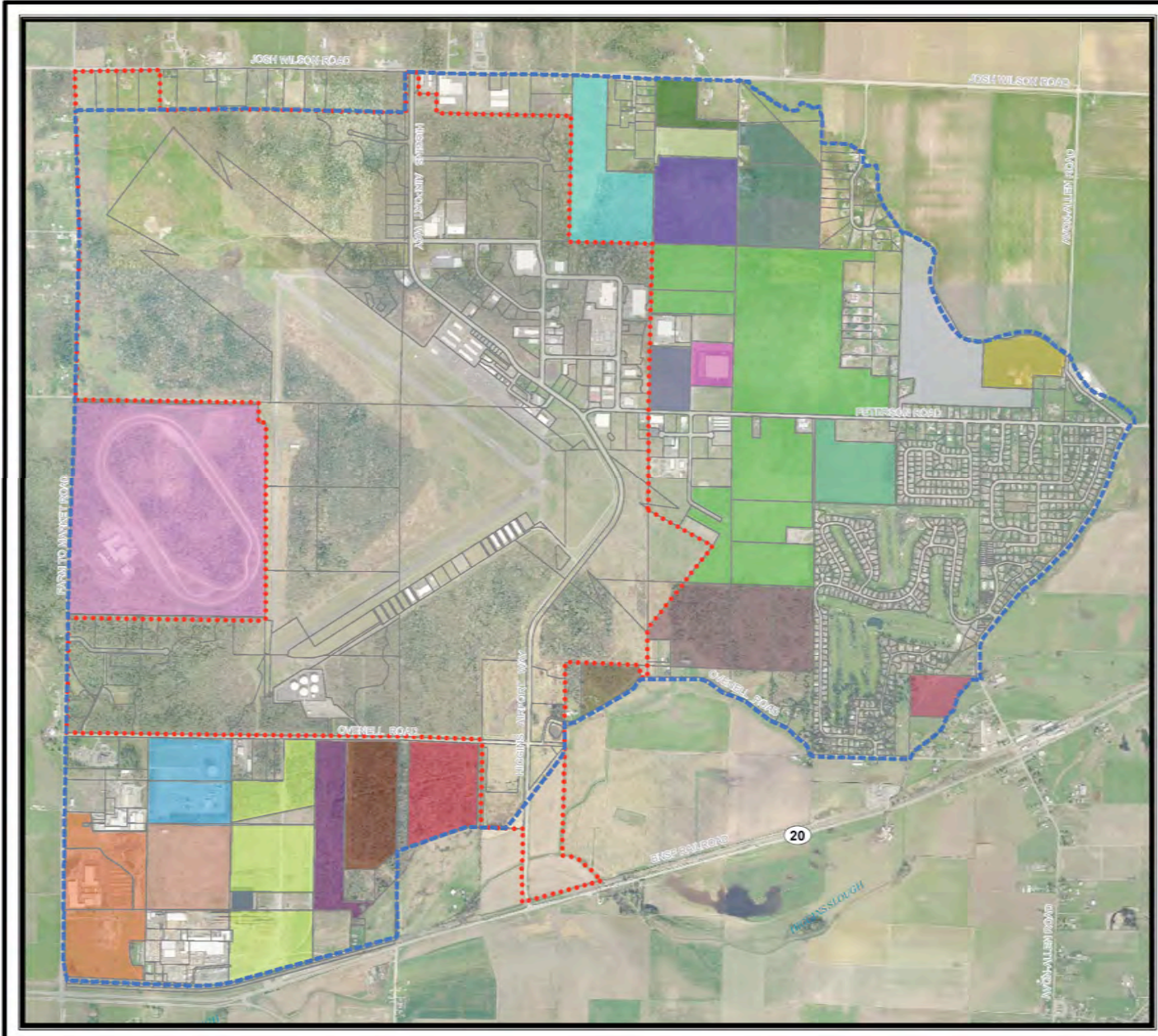




BAYVIEW RIDGE SUBAREA PLAN


Existing Development

Figure 3



LEGEND

-  Adopted Urban Growth Area Boundary
-  Port of Skagit County Boundary

 Private Large Lot Ownership
10 Acres or Larger

Aerial Photo 2007

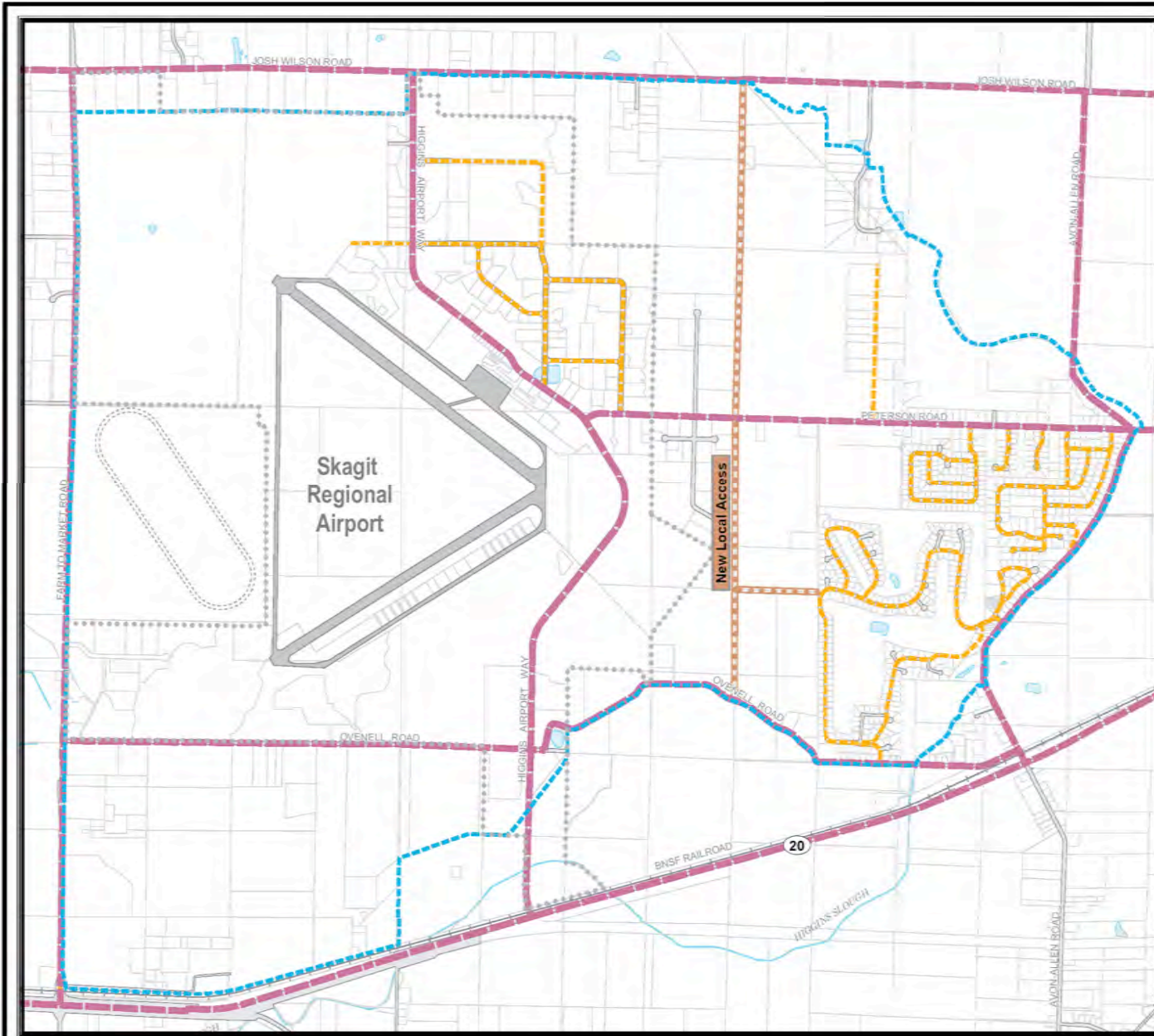
August 1, 2008



BAYVIEW RIDGE SUBAREA PLAN

Private Large Lot Ownership

Figure 4



LEGEND

-  Port of Skagit County Boundary
-  Adopted Urban Growth Area Boundary
-  Major Collector
-  Proposed New Local Access
-  Local Access

August 1, 2008

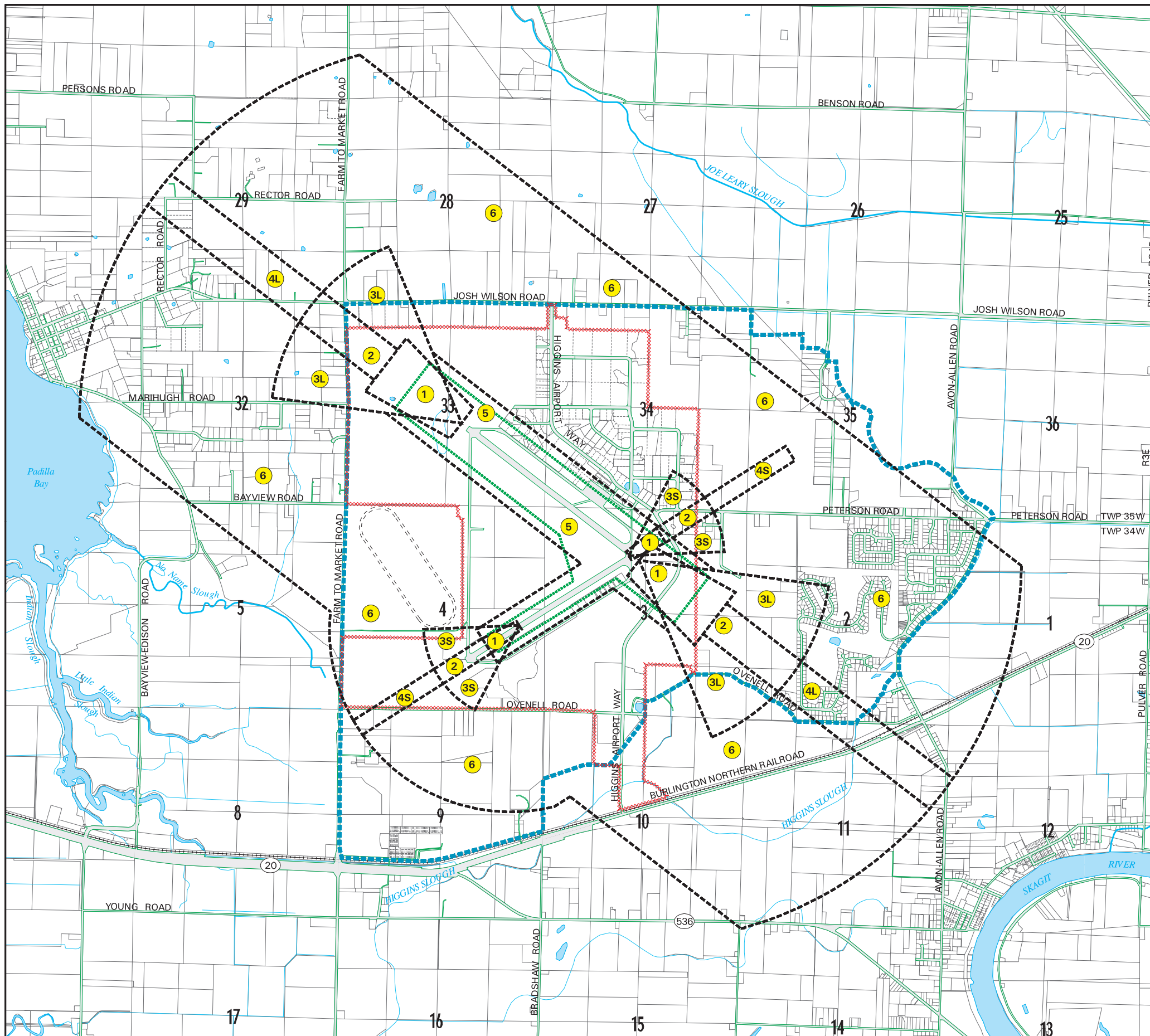









BAYVIEW RIDGE SUBAREA PLAN

Road System

Figure 9



LEGEND

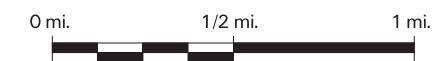
-  Subarea Plan Boundary
-  Port Of Skagit County Boundary
-  Airport Environs Zone
-  Building Restriction Zone

AIRPORT ACCIDENT SAFETY ZONES

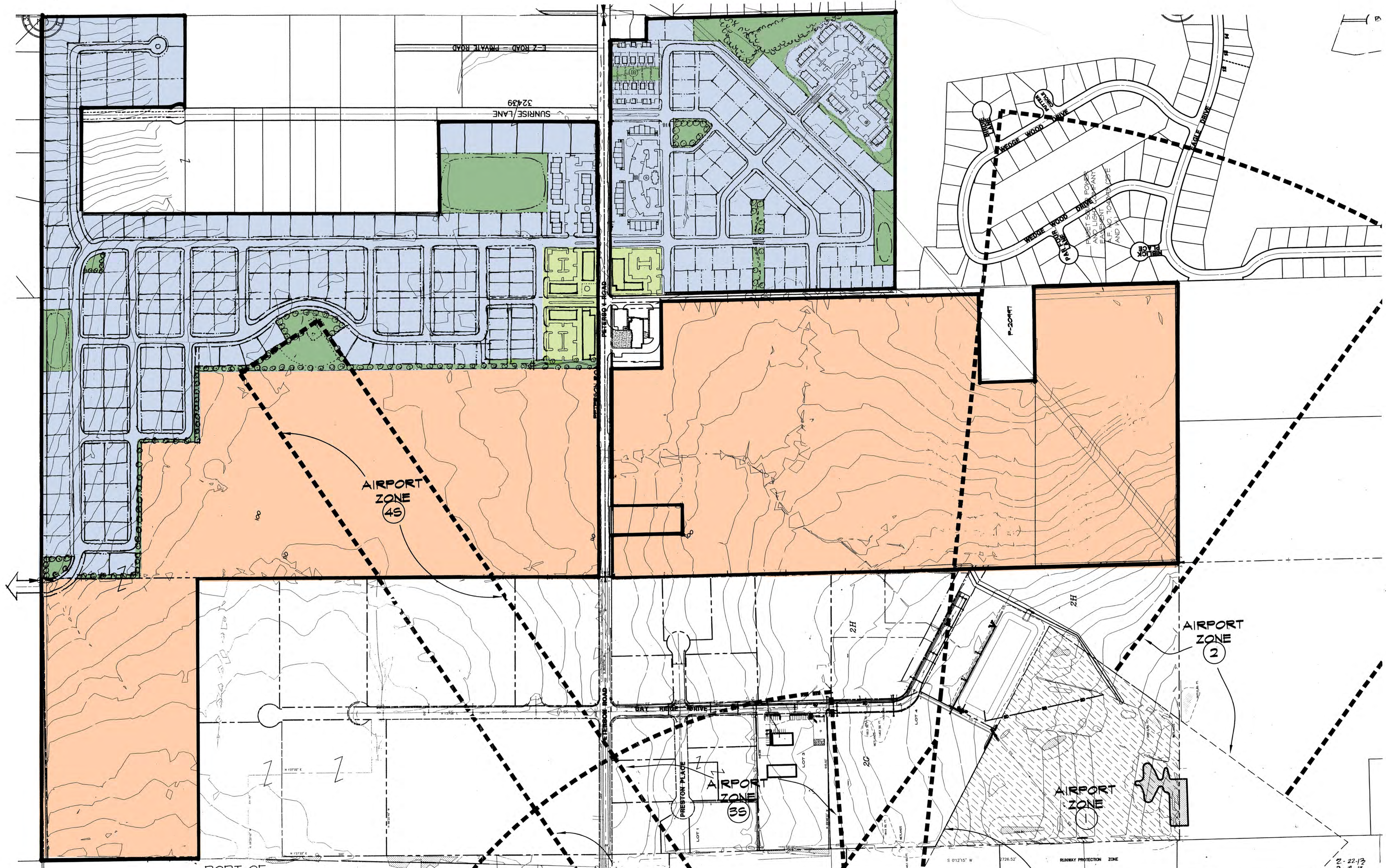
- | | |
|---|--|
|  Runway Protection Zone |  Outer Safety Zone |
|  Inner Safety Zone |  Sideline Safety Zone |
|  Inner Turning Zone (60 Degree Sector) |  Traffic Pattern Zone |

For a Description of Recommended Safety Compatibility Criteria Addressing Land Use and Densities, Open Space Requirements, and Representative Land Uses See Report Titled: *Skagit Regional Airport - Land Use Compatibility Study (Table 5)*

February 2004



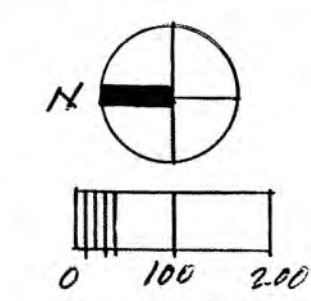
BAYVIEW RIDGE SUBAREA PLAN AIRPORT ENVIRONS OVERLAY AND SAFETY ZONES



Master Plan E- Revised
 Preliminary Development Concept
 Bayview Ridge, Skagit County, Washington
 For John Bouslog

PORT OF
 SKAGIT
 COUNTY

- BR-CC
- BR-LI
- BR-R



CHRISTENSEN
 DESIGN MANAGEMENT
 1100 1/2 AVENUE
 SEASIDE, WASHINGTON 98148
 WWW.CDMMASTERPLANNING.COM

2-22-13
 2-18-15
 2-11-18
 rev 7/22/13

CDM