

Exhibit 1-1

Public Water System Definition

Public Water Systems

- All systems except those serving only one single family residence or less than five residences on the same farm

Group A

System that regularly serves:

- 15 or more residential connections
- or**
- 25 or more people/day for 60 or more days/yr

Group B

System that serves:

- Less than 15 residential connections
- and**
- Less than 25 people/day
- or**
- 25 or more people/day during fewer than 60 days/yr

Community

- System that regularly serves 15 or more year-round residential connections, or 25 or more year-round residents (for 180 or more days/yr).

Noncommunity

- Any system that is not a community system.

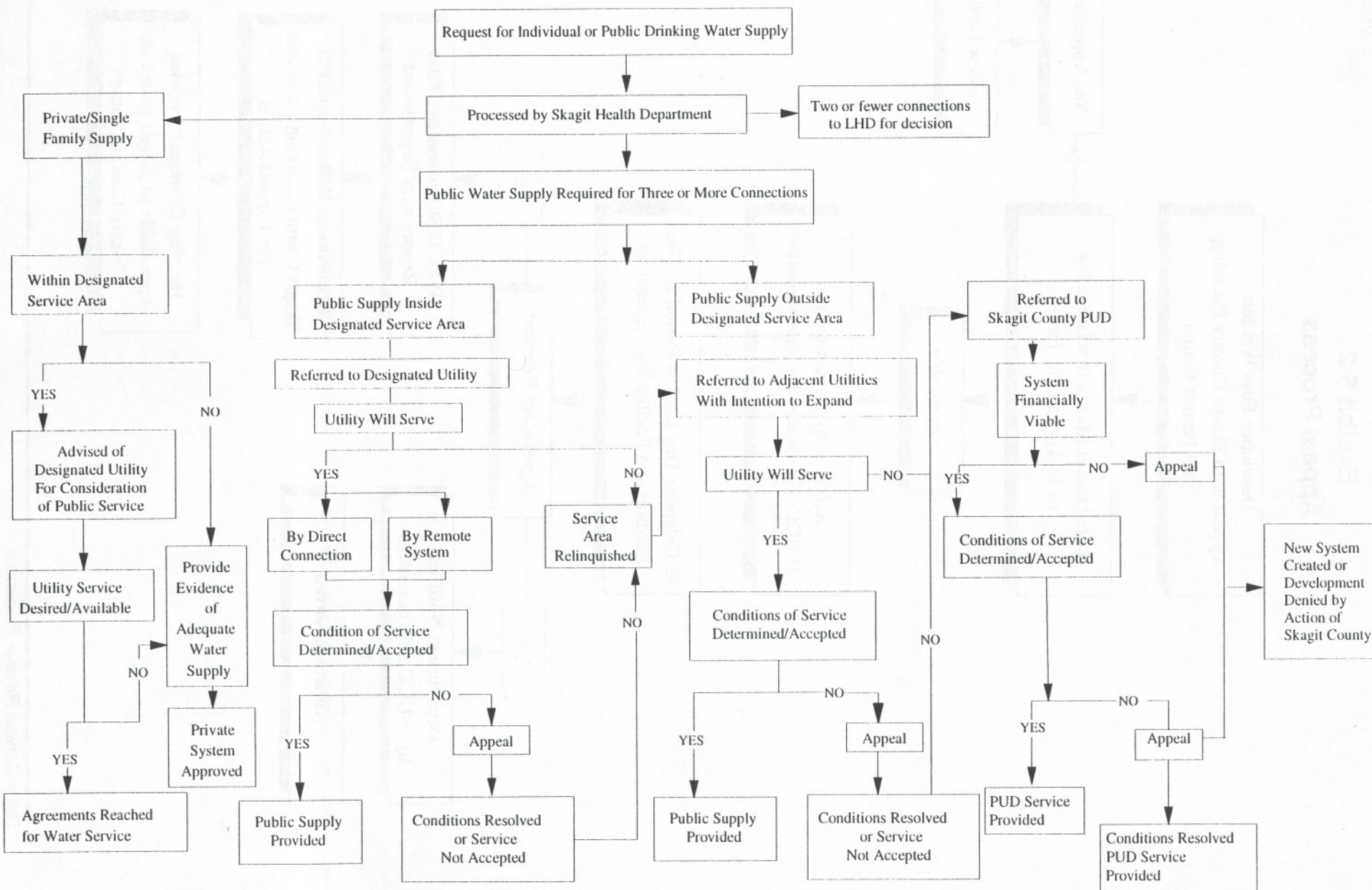
Nontransient (NTNC)

- System that serves 25 or more of the same people/day for 180 or more days/yr.

Group B

- System that serves:
 - 25 or more different people/day during 60 or more days/yr
- or**
- 25 or more of the same people/day for less than 180 days/yr and during more than 59 days/yr
- or**
- 1,000 or more people for two or more consecutive days

Exhibit 5-1 Utility Service Review Procedure



Utility Service Review Procedure

Exhibit 5-2 Appeal Process

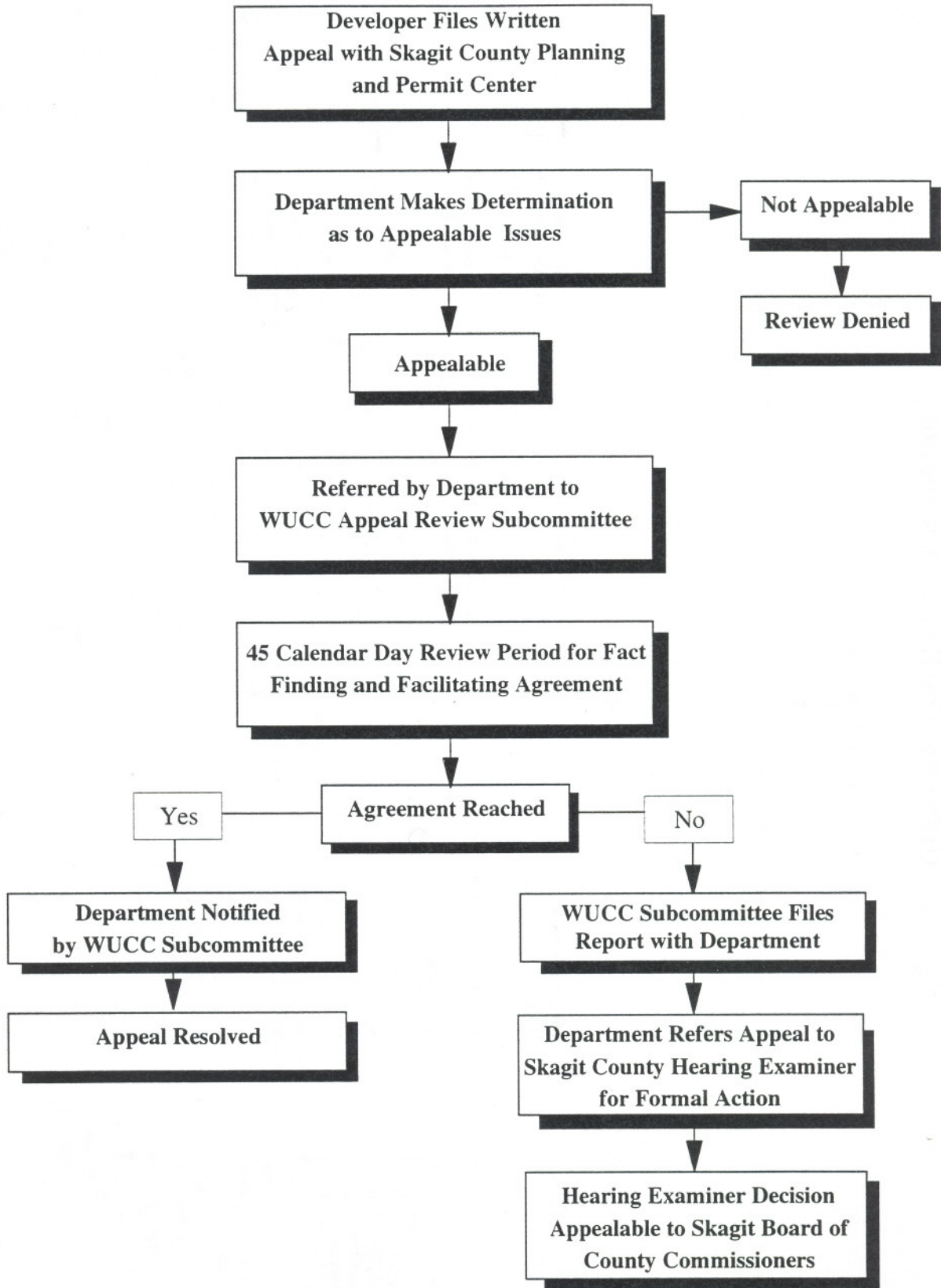


Exhibit 11-2 Skagit County CWSP Water System Plan Review

