

FIGURE 2b.

PRELIMINARY SHORELINE JURISDICTION



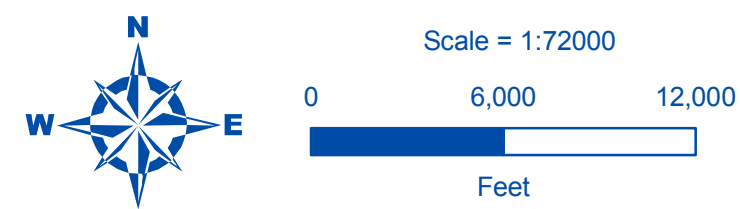
SKAGIT COUNTY SHORELINE MASTER PROGRAM

DRAFT

MAP LEGEND

- Shoreline Jurisdiction¹ (See Note 1)
- Potentially Associated Wetlands²
- SMP Streams³
- SMP Waterbodies²
- City Boundaries
- UGA Boundaries
- Tribal Boundaries⁴, 2010
- National Forests
- National Parks
- National Recreation Areas
- Railroad⁵
- County Boundary

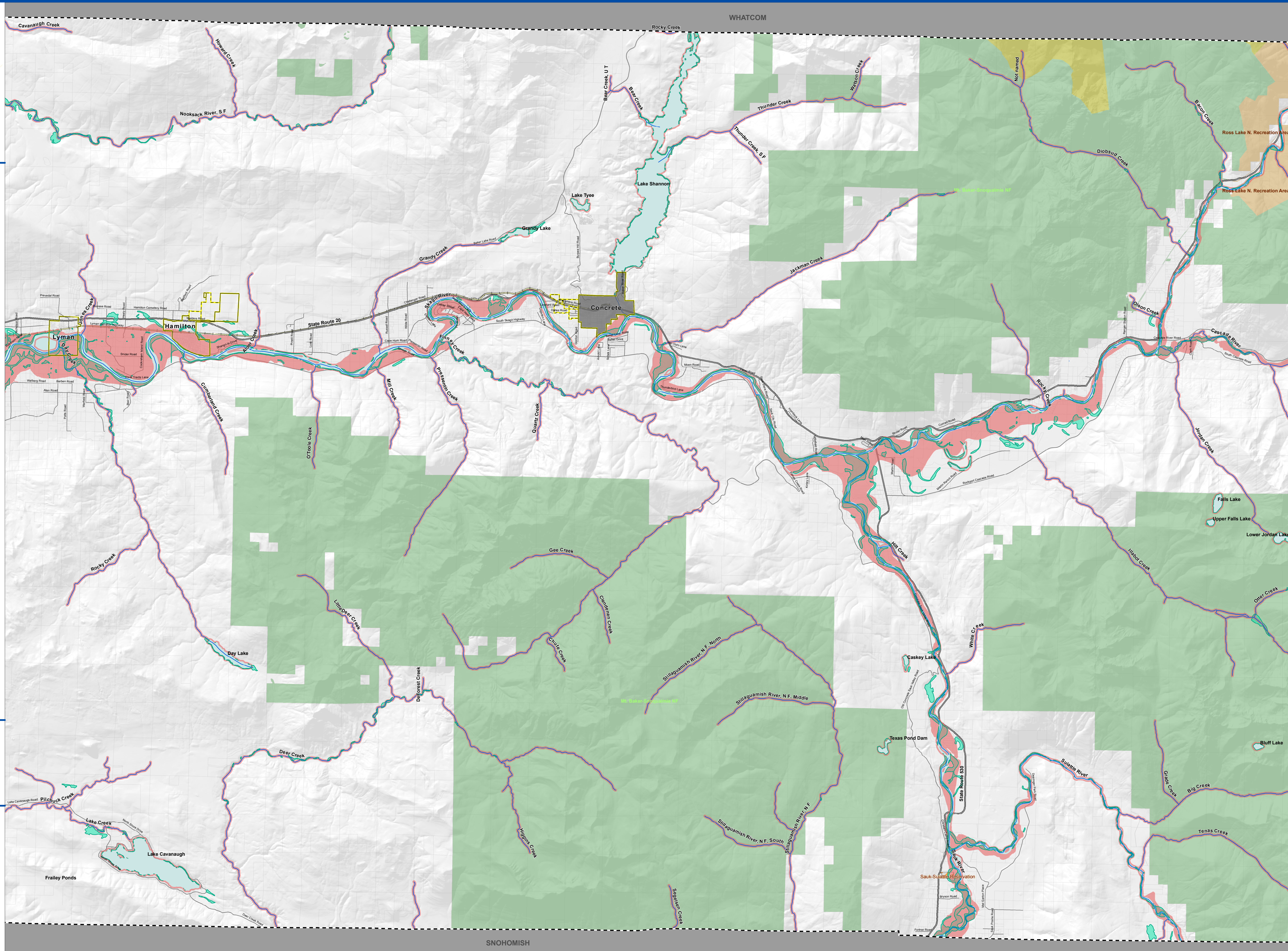
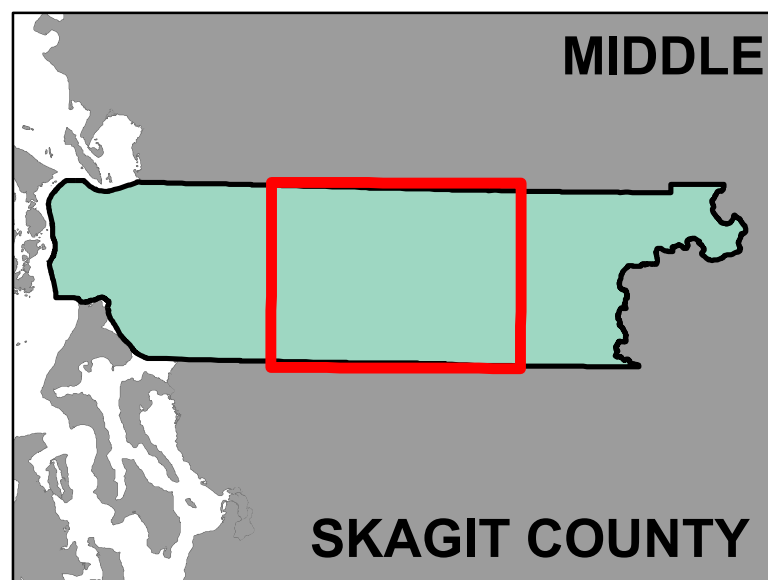
Note 1: All area waterward of OHWM, small islands, islets, rocks and reefs that are not shown on this map are included in shoreline jurisdiction.



Date: 3/21/2011
 File Name: Fig02_min_jurisdiction.mxd
 Data source:
¹The Watershed Company, 2011
²Skagit County, Washington Department of Ecology (WA DOE)
³WA DOE
⁴US Census Bureau, TIGERLine®
⁵Washington Department of Transportation



All features depicted on this map are approximate. They have not been formally delineated or surveyed and are intended for planning purposes only. Additional site-specific evaluation may be needed to confirm/ verify information shown on this map.



SNOHOMISH

Sauk-Suiattle Reservation