

FIGURE 4b.

COMPREHENSIVE LAND USE AND ZONING DESIGNATION

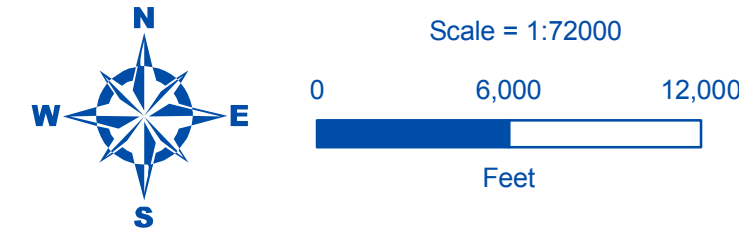


SKAGIT COUNTY SHORELINE MASTER PROGRAM

DRAFT

Comprehensive Land Use and Zoning Designation

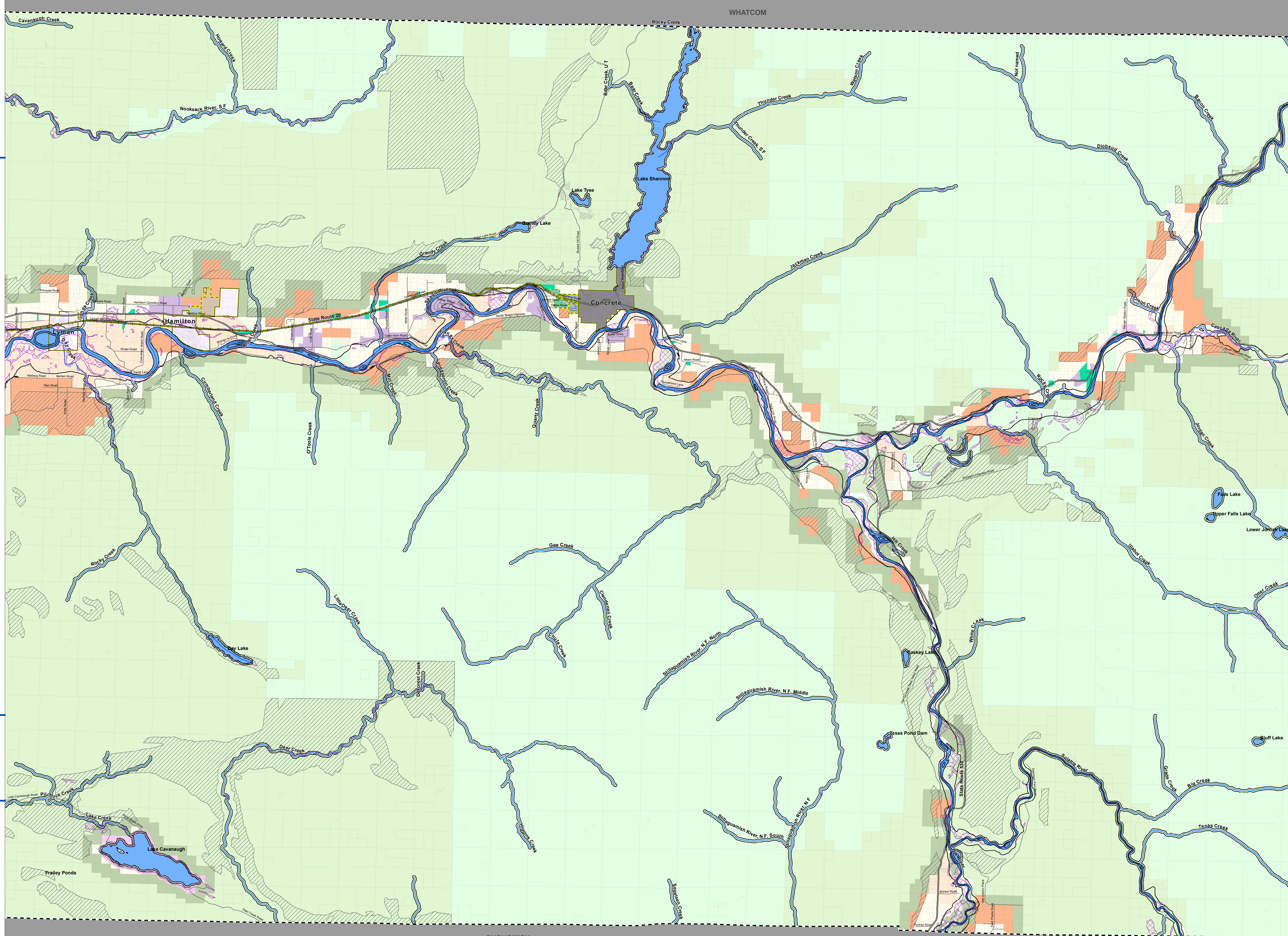
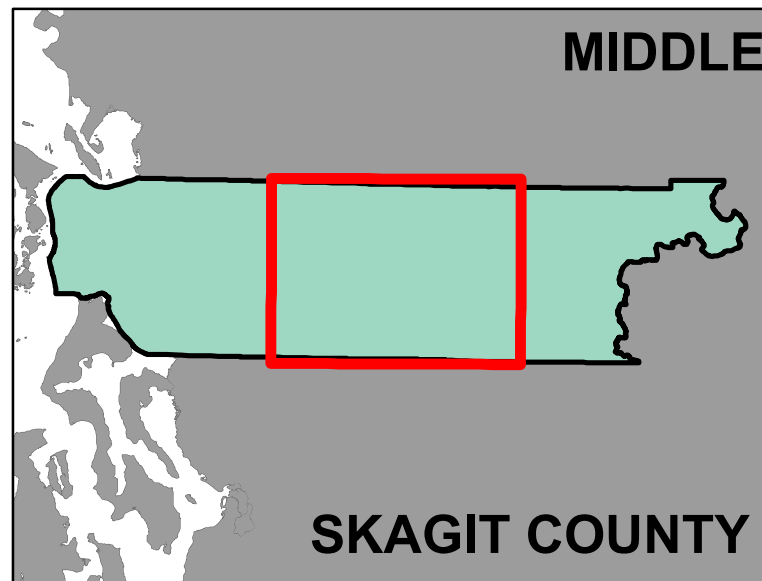
- [AVR] Aviation Related
- [BR-CC] Bayview Ridge Community Center
- [BR-HI] Bayview Ridge Heavy Industrial
- [BR-LI] Bayview Ridge Light Industrial
- [BR-R] Bayview Ridge Residential
- UGA Zoning
- [URR] Urban Reserve Residential
- [URC-I] Urban Reserve Commercial Industrial
- [URP-OS] Urban Reserve Public Open Space
- [A-UD] Anacortes UGA Development District
- [LC-UD] La Conner UGA Urban Development District
- [MV-UD] Mount Vernon Urban Development District
- [R] Residential - Swinomish UGA
- [C] Commercial - Swinomish UGA
- [H-R] Hamilton Residential
- [H-URv] Hamilton Urban Reserve
- Urban
- [CITY] Incorporated Area
- Rural
- [BR-URv] Bayview Ridge Urban Reserve
- [RI] Rural Intermediate
- [RRv] Rural Reserve
- [RVR] Rural Village Residential
- Natural Resource Lands
- [RRC-NRL] Rural Resource - NRL
- [Ag-NRL] Agricultural - NRL
- [SF-NRL] Secondary Forest - NRL
- [IF-NRL] Industrial Forest - NRL
- Commercial/Industrial
- [RB] Rural Business
- [RC] Rural Center
- [RVC] Rural Village Commercial
- [RFS] Rural Freeway Service
- [NRI] Natural Resource Industrial
- [SRT] Small-scale Recreation & Tourism
- [SSB] Small-scale Business
- [RMI] Rural Marine Industrial
- [IMPR] Master Planned Resort
- [OSRS] Public Open Space of Regional/Statewide Importance
- [MRO] Mineral Resource Overlay
- Shoreline Jurisdiction
- SMP Streams
- SMP Waterbodies
- Potentially Associated Wetlands
- City Boundaries
- UGA Boundaries
- County Boundary



Date: 3/24/2011  
File Name: Fig04\_comp\_plan\_zoning.mxd  
Data source: 'Skagit County'



All features depicted on this map are approximate. They have not been formally delineated or surveyed and are intended for planning purposes only. Additional site-specific evaluation may be needed to confirm/verify information shown on this map.



SNOHOMISH