

FIGURE 10b.

IMPERVIOUS SURFACES



SKAGIT COUNTY SHORELINE MASTER PROGRAM
UPDATE


SKAGIT COUNTY SHORELINE MASTER PROGRAM
DRAFT

MAP LEGEND

Percent Impervious¹, 2006


- 0
- 0 - 20
- 20.1 - 40
- 40.1 - 60
- 60.1 - 80
- 80.1 - 100

Shoreline Jurisdiction
SMP Streams
SMP Waterbodies
Potentially Associated Wetlands
City Boundaries
UGA Boundaries
County Boundary



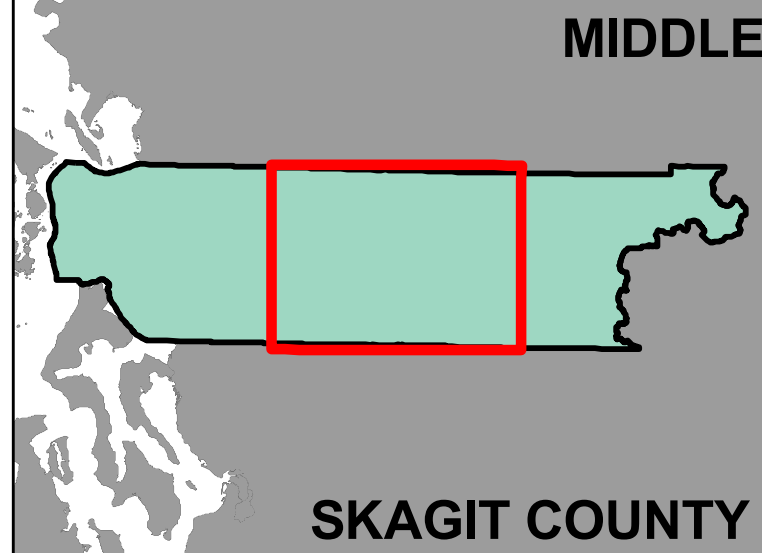
Scale = 1:72000
0 6,000 12,000
Feet

Date: 3/21/2011
File Name: Fig10_impervious.mxd
Data source: National Oceanic and Atmospheric Administration



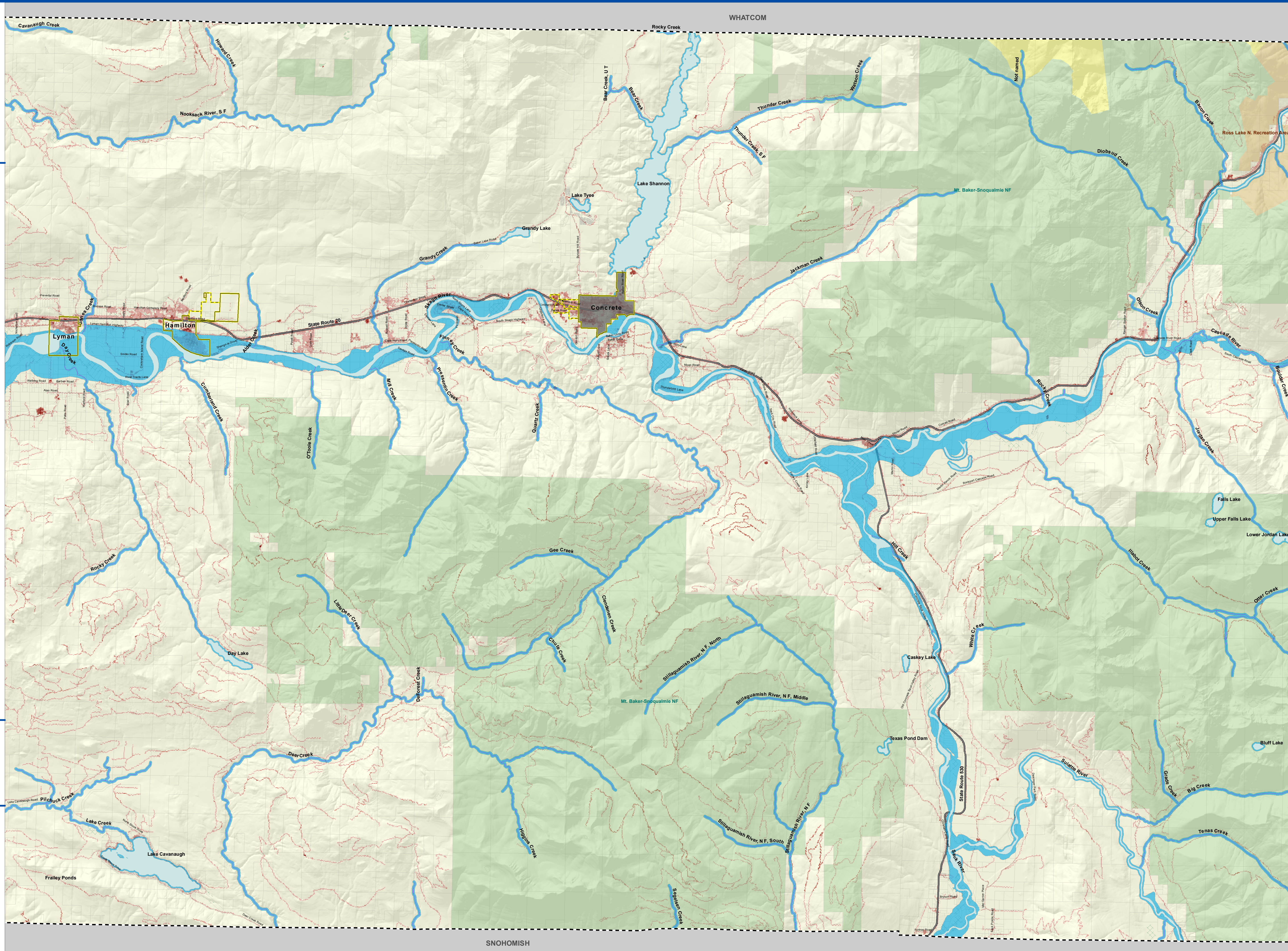
THE WATERSHED COMPANY

All features depicted on this map are approximate. They have not been formally delineated or surveyed and are intended for planning purposes only. Additional site-specific evaluation may be needed to confirm/verify information shown on this map.



MIDDLE

SKAGIT COUNTY



SNOHOMISH