

FIGURE 23b.

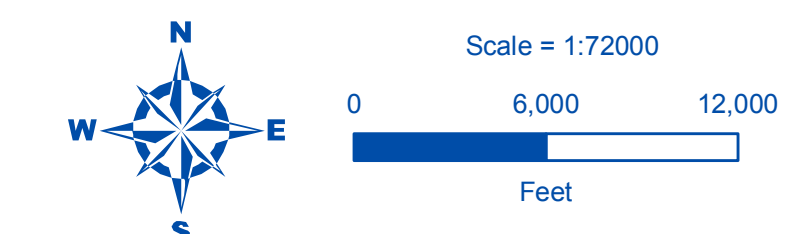
HABITATS & SPECIES - BIRDS AND MAMMALS



SKAGIT COUNTY SHORELINE MASTER PROGRAM

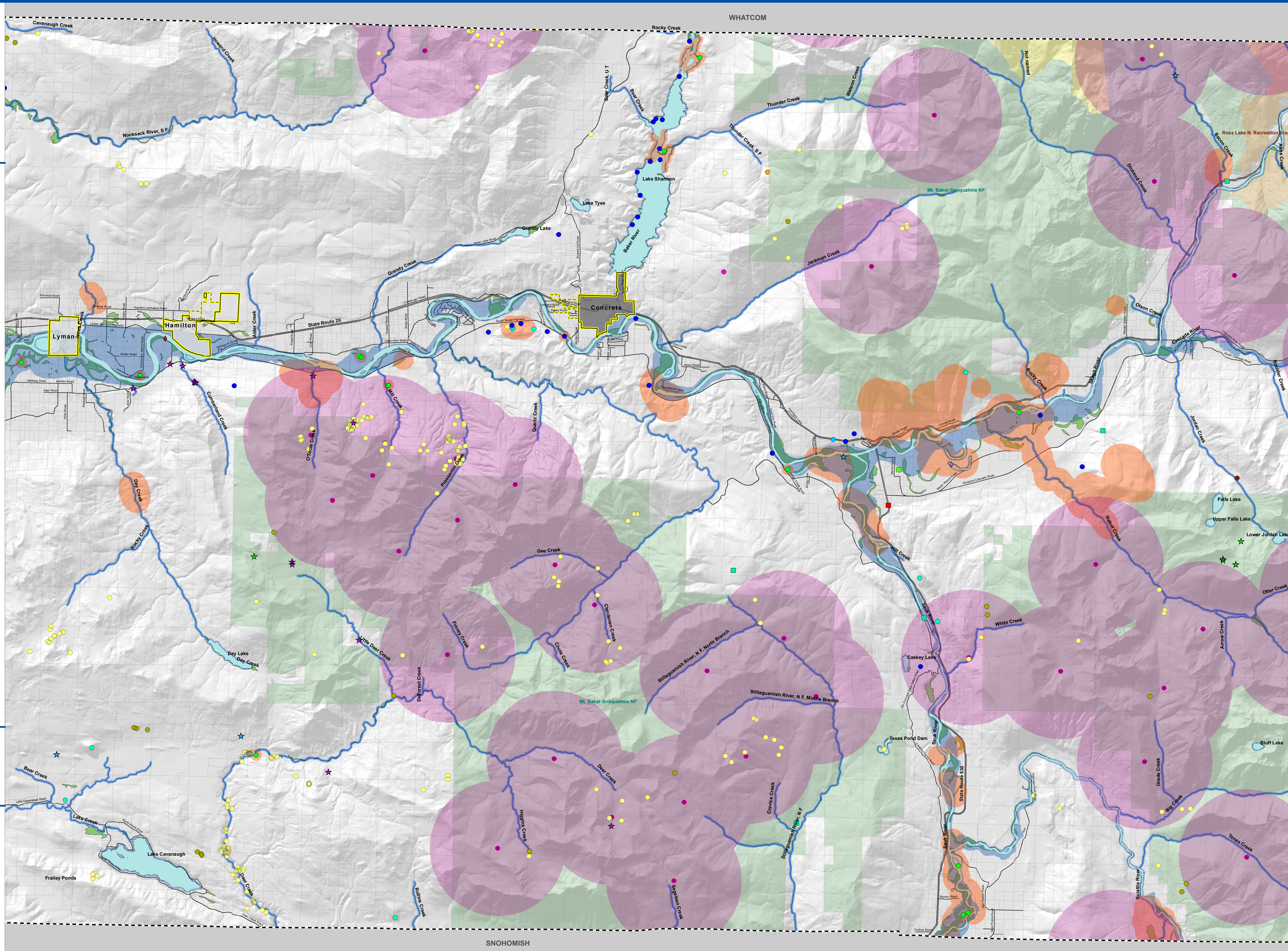
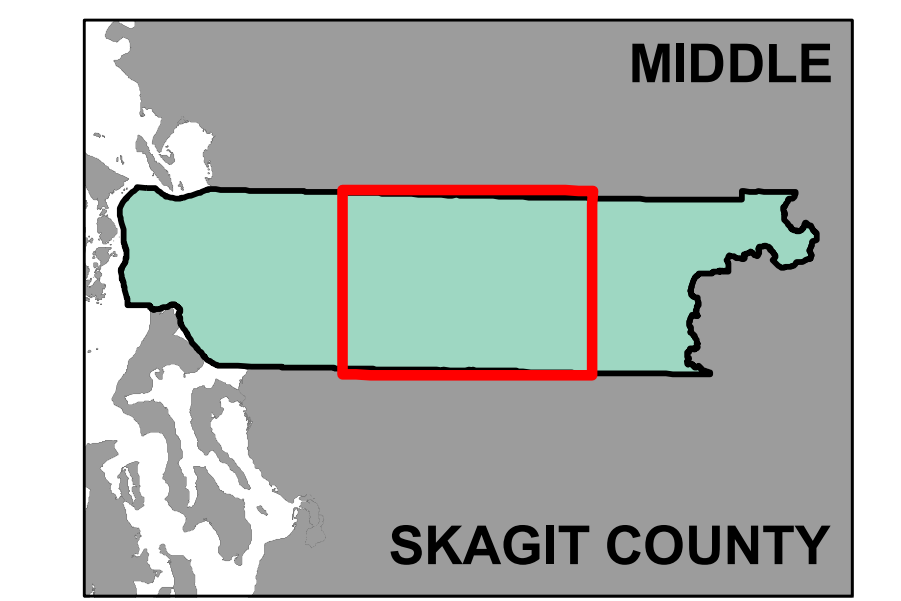
DRAFT

- MAP LEGEND**
- Shoreline Jurisdiction
 - SMP Streams
 - SMP Waterbodies
 - Potentially Associated Wetlands
 - City Boundaries
 - UGA Boundaries
 - County Boundary
 - Bald Eagle Buffer¹, 2010
 - Spotted Owl Buffer¹, 2010
 - Birds and Mammals¹, 2010
 - Big brown bat
 - California myotis
 - Little brown myotis
 - Long-eared myotis
 - Long-legged myotis
 - Townsend's Big-eared Bat
 - Yuma myotis
 - Bald eagle
 - Black oystercatcher
 - Black swift
 - Common loon
 - Golden eagle
 - Great gray owl
 - Great blue heron
 - Marbled murrelet
 - Merlin
 - Mountain quail
 - Northern goshawk
 - Osprey
 - Peregrine falcon
 - Pileated woodpecker
 - Snowy owl
 - Vaux's swift
 - Gray wolf
 - Grizzly bear
 - Lynx
 - Marten
 - Western gray squirrel
 - Wolverine
 - Cascades frog
 - Columbia spotted frog
 - Tailed frog
 - Western toad
 - Pacific lamprey
 - Salish sucker
 - Spotted Owl
 - Seal and Sea Lion Haulout Site



Date: 3/20/2011
 File Name: Fig23_habitats_birds_mammals.mxd
 Data source: ¹Washington Department of Fish and Wildlife, Skagit County

THE WATERSHED COMPANY
 All features depicted on this map are approximate. They have not been formally delineated or surveyed and are intended for planning purposes only. Additional site-specific evaluation may be needed to confirm/verify information shown on this map.



SNOHOMISH