

FIGURE 27b.

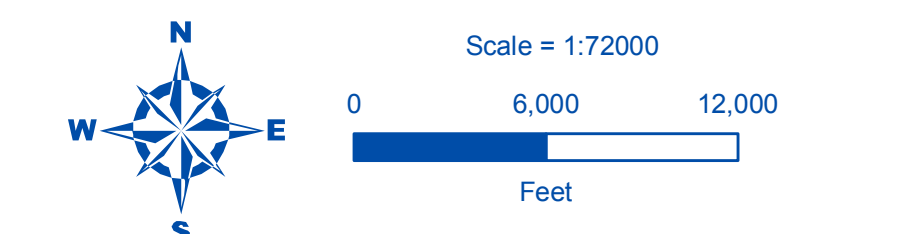
# WATER QUALITY



## SKAGIT COUNTY SHORELINE MASTER PROGRAM

DRAFT

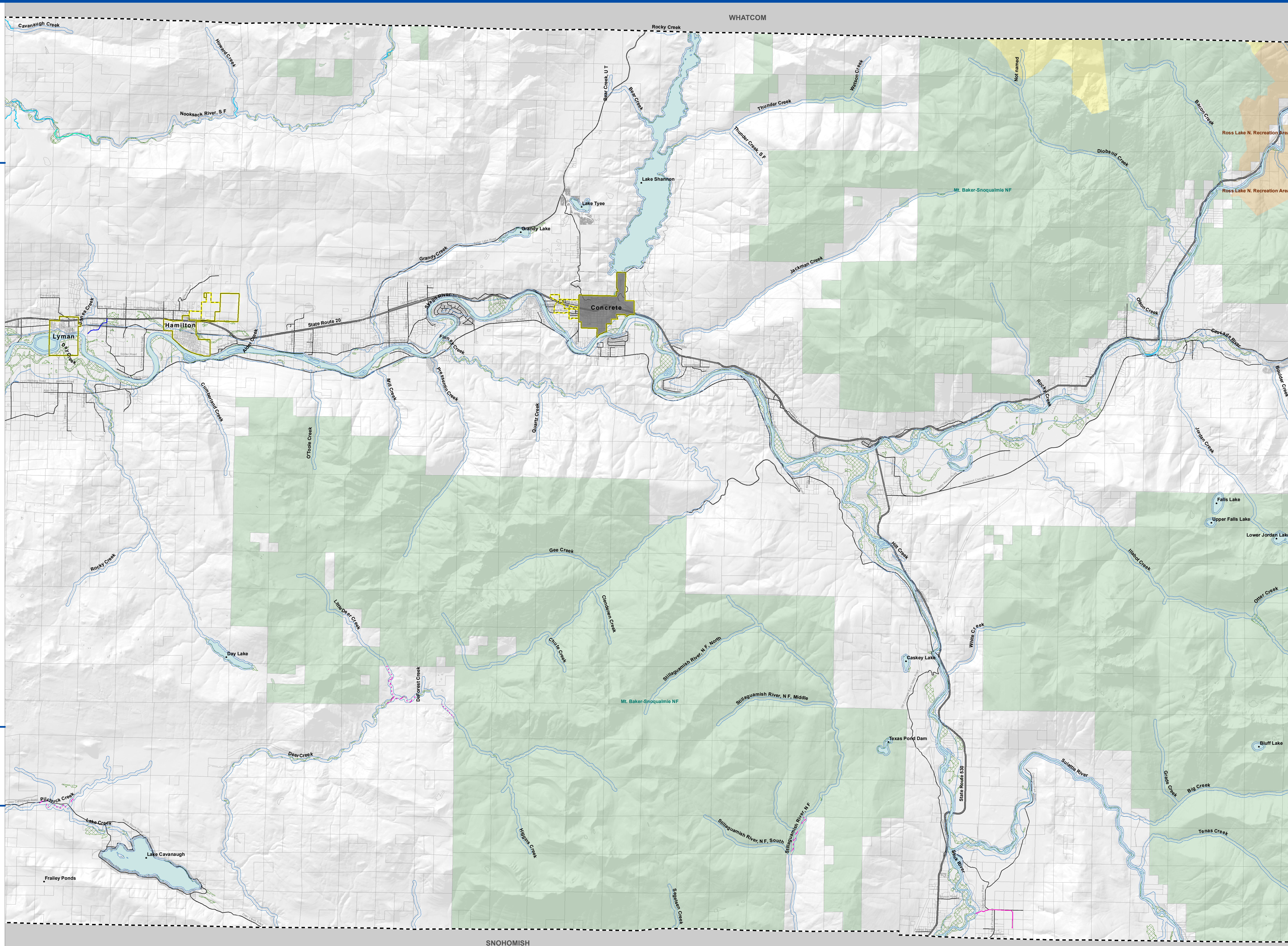
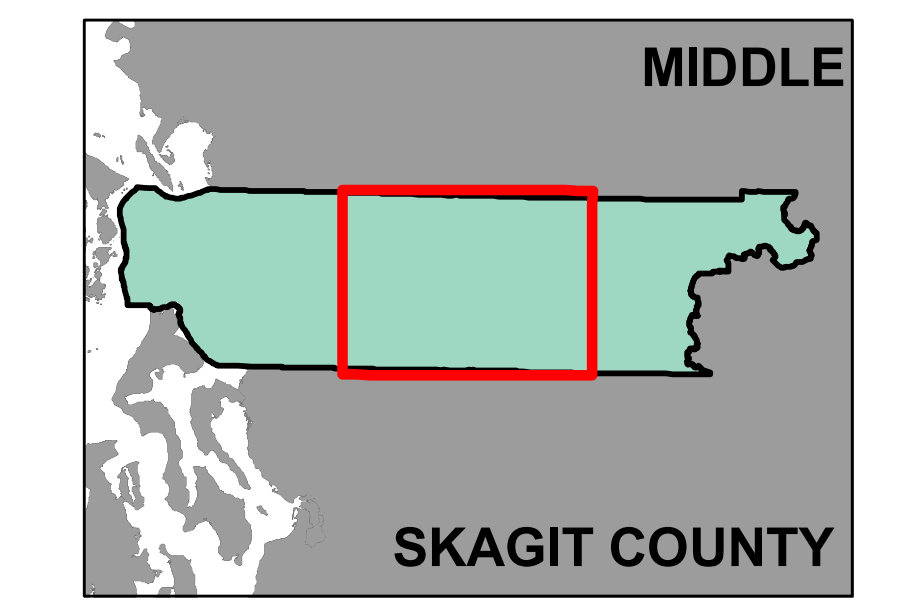
- MAP LEGEND**
- Category 5 Water<sup>1</sup>, 2008
    - Benzo[a]anthracene
    - Chrysene
    - Dissolved Oxygen
    - Fecal Coliform
    - Fine Sediment
    - PCB
    - Temperature
    - Turbidity
    - pH
  - Category 4 Waters<sup>1</sup>, 2008
    - Fecal Coliform
    - Fish Habitat
    - Invasive Exotic Species
    - Temperature
    - Total Phosphorus
  - Shoreline Jurisdiction
  - SMP Streams
  - SMP Waterbodies
  - Potentially Associated Wetlands
  - City Boundaries
  - County Boundary



Date: 3/20/2011  
 File Name: Fig25\_water\_quality.mxd  
 Data source: Washington Department of Ecology 2008 Water Quality Assessment 305(b) Report, Skagit County.  
 Note: All area waterward of OHWM, small islands, islets, rocks and reefs that are not shown on this map are included in shoreline jurisdiction.

**THE WATERSHED COMPANY**

All features depicted on this map are approximate. They have not been formally delineated or surveyed and are intended for planning purposes only. Additional site-specific evaluation may be needed to confirm/verify information shown on this map.



SNOHOMISH