

FIGURE 28b.

ECOLOGY PERMITTED SITES



SKAGIT COUNTY SHORELINE MASTER PROGRAM

DRAFT

MAP LEGEND

- Ecology Permitted Sites¹
- 01 - 401CZM Mitigation Site
- 02 - 401CZM OLD Mitigation Site
- 03 - 401CZM Project Site
- 04 - Air Qual Local Authority Reg
- 05 - Air Qual Oper Permit Source
- 06 - Air Qual Synth Minor Source
- 07 - Biosolids
- 08 - Composting
- 09 - Construction SW GP
- 10 - Dairy
- 11 - Dairy Unpermitted
- 12 - Dam Site
- 13 - Emergency/Haz Chem Rpt TIER2
- 14 - Emergency Recovery
- 15 - Enforcement Final
- 16 - General Permit Storm Water Ind
- 17 - Hazardous Waste Generator
- 18 - Hazardous Waste Planner
- 19 - Independent Cleanup
- 20 - Independent Remedial Actn Prg
- 21 - Industrial IP
- 22 - Industrial SW GP
- 23 - Land Application
- 24 - Landfill
- 25 - Local Source Control
- 26 - LUST Facility
- 27 - Moderate Risk Waste
- 28 - Municipal IP
- 29 - Municipal SW Phase II Western WA GP
- 30 - Non Enforcement Final
- 31 - ORA Project
- 32 - Recycling
- 33 - Revised Site Visit Program
- 34 - Sand and Gravel GP
- 35 - State Cleanup Site
- 36 - Storage & Handling
- 37 - Toxics Release Inventory
- 38 - Underground Storage Tank
- 39 - Upland Fish Hatchery GP
- 40 - Voluntary Cleanup Sites
- 41 - Water Treatment Plant GP
- Shoreline Jurisdiction
- ~ SMP Streams
- SMP Waterbodies
- ⊗ Potentially Associated Wetlands
- City Boundaries
- UGA Boundaries
- County Boundary

Scale = 1:72000

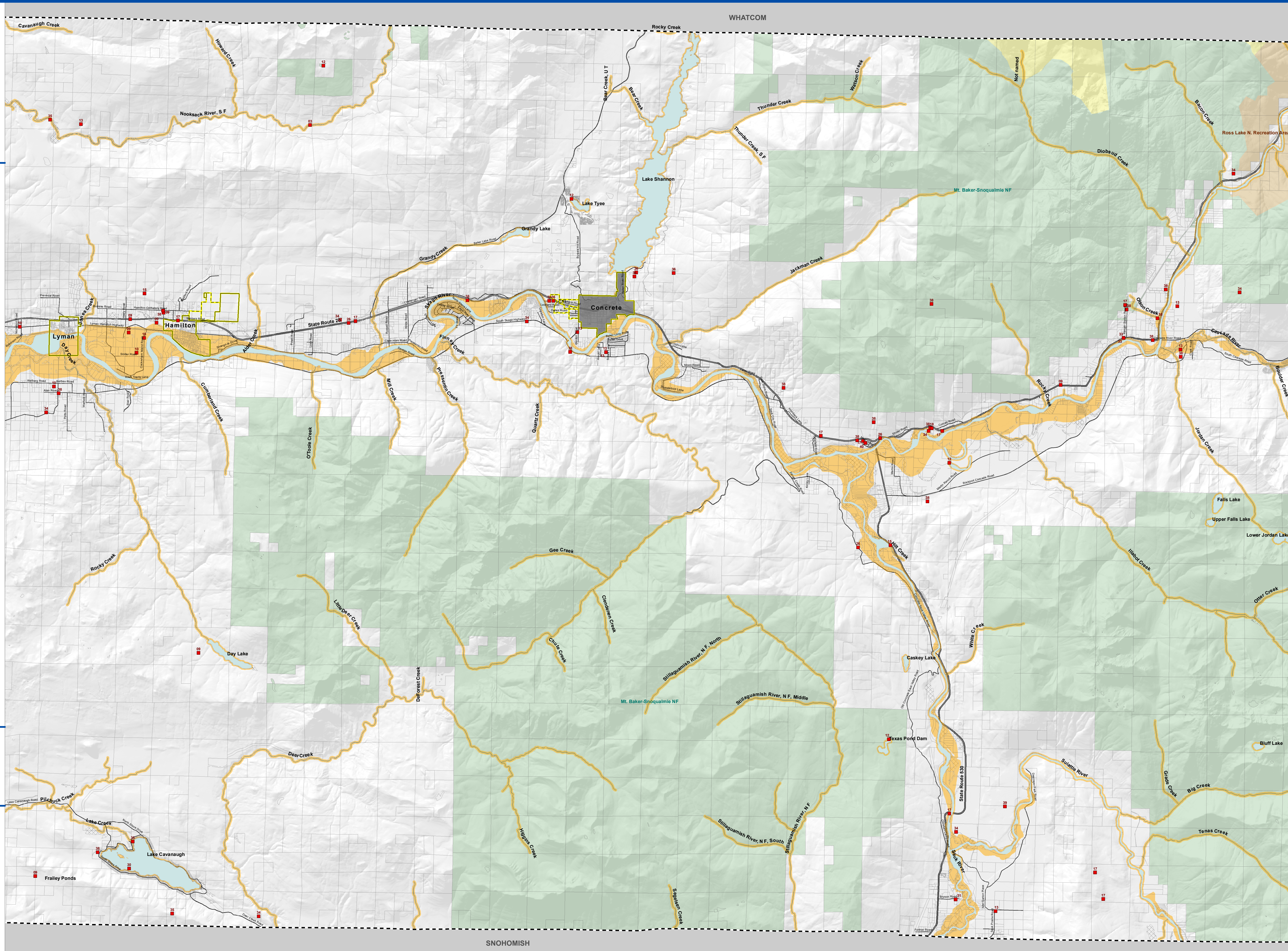
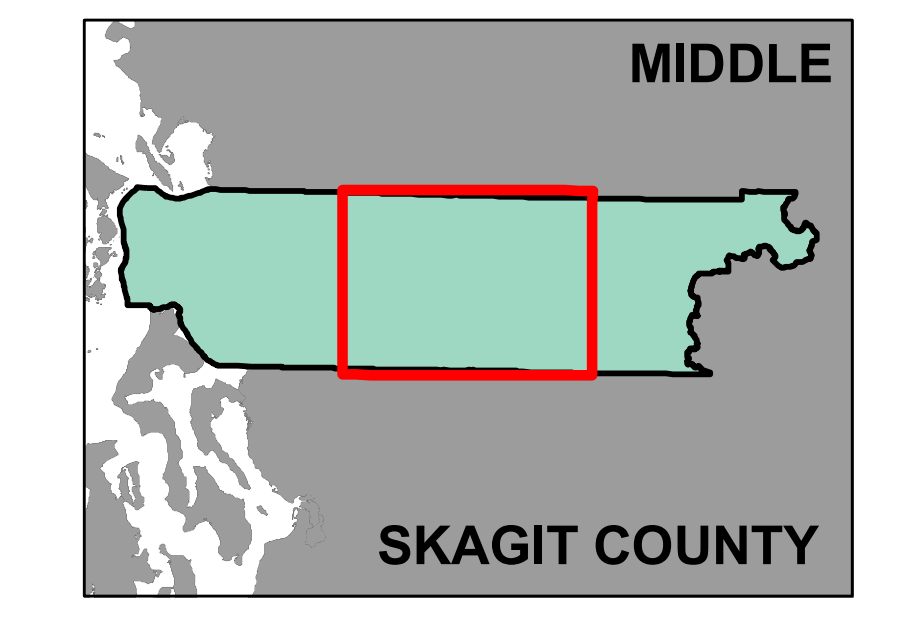
0 6,000 12,000 Feet

Date: 3/20/2011
 File Name: Fig26_ecology_permitted_sites.mxd
 Data source: Washington Department of Ecology, Skagit County

Note: All area waterward of OHWM, small islands, islets, rocks and reefs that are not shown on this map are included in shoreline jurisdiction.

THE WATERSHED COMPANY

All features depicted on this map are approximate. They have not been formally delineated or surveyed and are intended for planning purposes only. Additional site-specific evaluation may be needed to confirm/verify information shown on this map.



SNOHOMISH