

**FIGURE 15a.**

**GEOLOGIC HAZARDS**

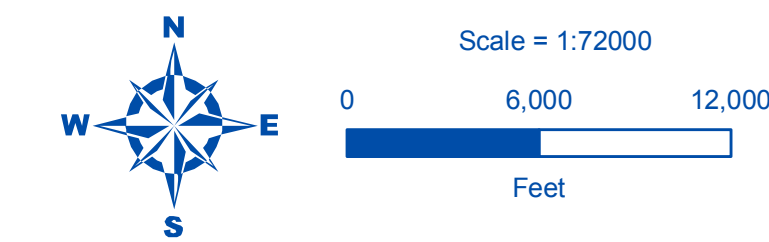


**SKAGIT COUNTY SHORELINE MASTER PROGRAM**

**DRAFT**

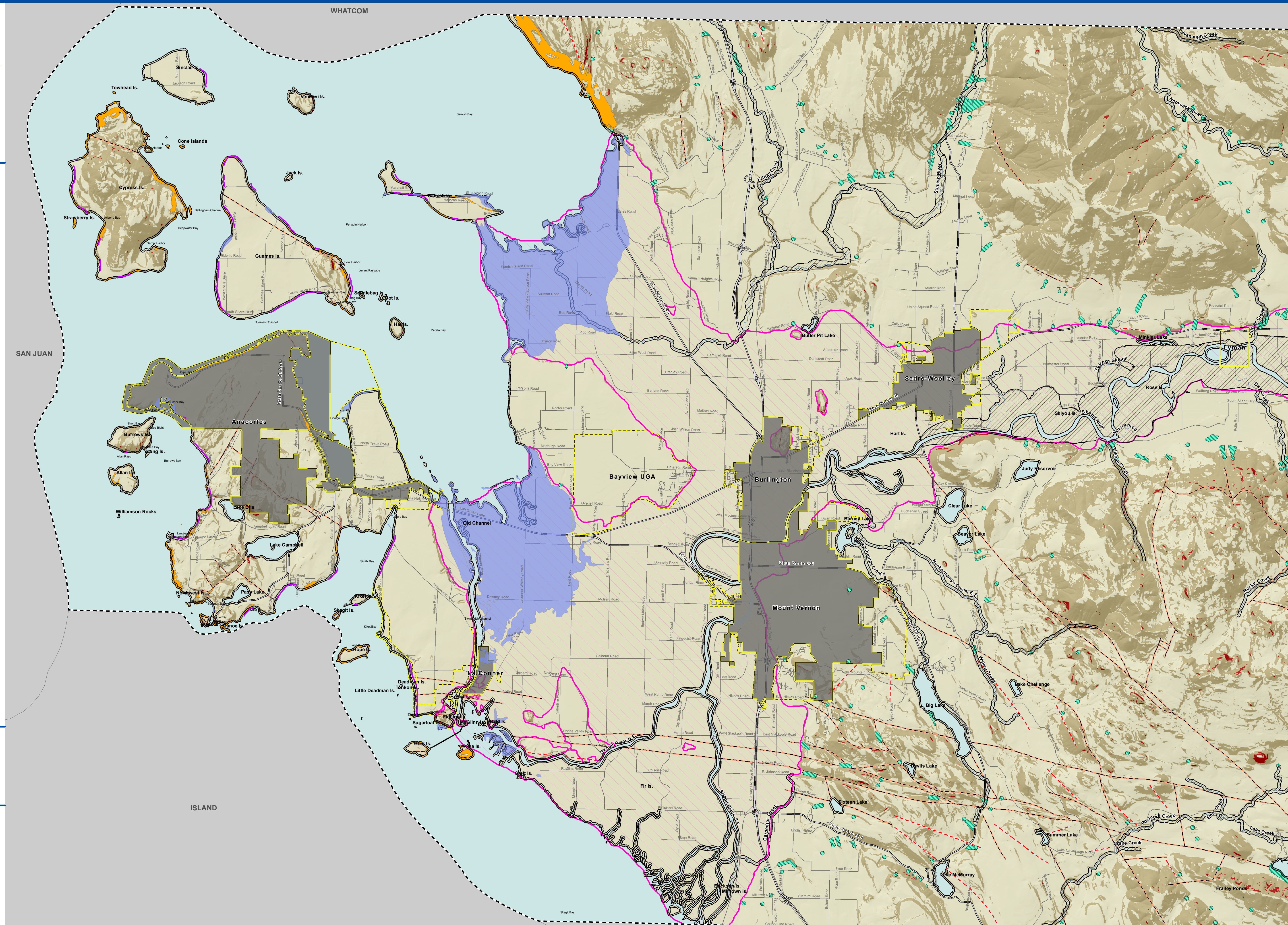
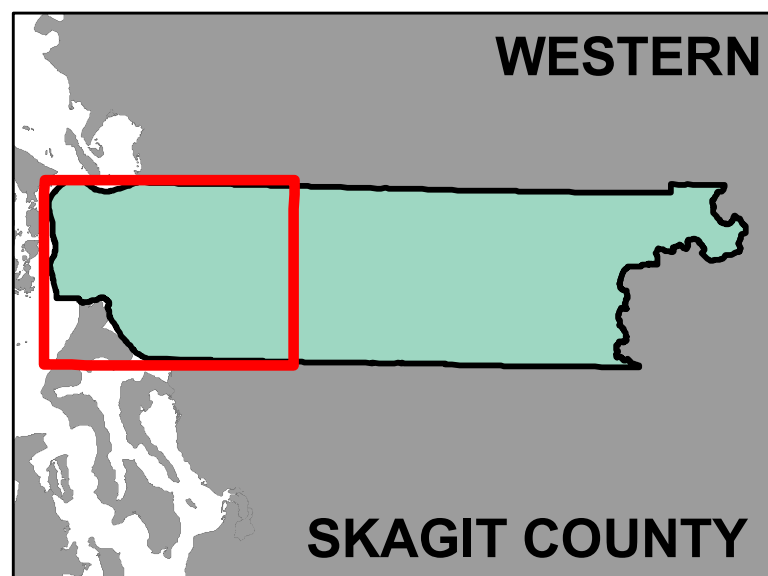
**MAP LEGEND**

- Slope Stability<sup>1</sup>
  - 0 to 15 Degree Slope
  - 15 to 40 Degree Slope
  - Greater than 40 Degree Slope
  - Unstable slope
  - Unstable-old slide
  - Unstable-recent slide
- Alluvial Fans<sup>1</sup>
- Landslide Areas<sup>1</sup>
- Fault Line<sup>2</sup>
- Fold Line<sup>2</sup>
- Tsunami Inundation<sup>2</sup>
- Channel Mitigation Zone<sup>3</sup>
- Shoreline Jurisdiction
- SMP Streams
- SMP Waterbodies
- City Boundaries
- UGA Boundaries
- County Boundary



Date: 3/22/2011  
 File Name: Fig15\_geo\_hazards.mxd  
 Data source:  
<sup>1</sup> Skagit County  
<sup>2</sup> Washington Department of Natural Resources, Geology and Earth Sciences Division  
<sup>3</sup> Washington Department of Ecology

**THE WATERSHED COMPANY**  
 Shoreline jurisdiction boundaries depicted on this map are approximate. They have not been formally delineated or surveyed and are intended for planning purposes only. Additional site-specific evaluation may be needed to confirm/verify information shown on this map.



SNOHOMISH