

FIGURE 23a.

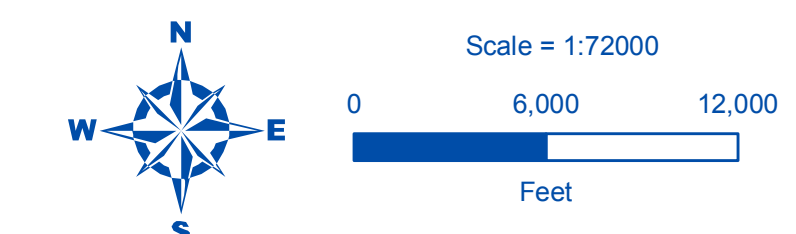
# HABITATS & SPECIES - BIRDS AND MAMMALS



## SKAGIT COUNTY SHORELINE MASTER PROGRAM

DRAFT

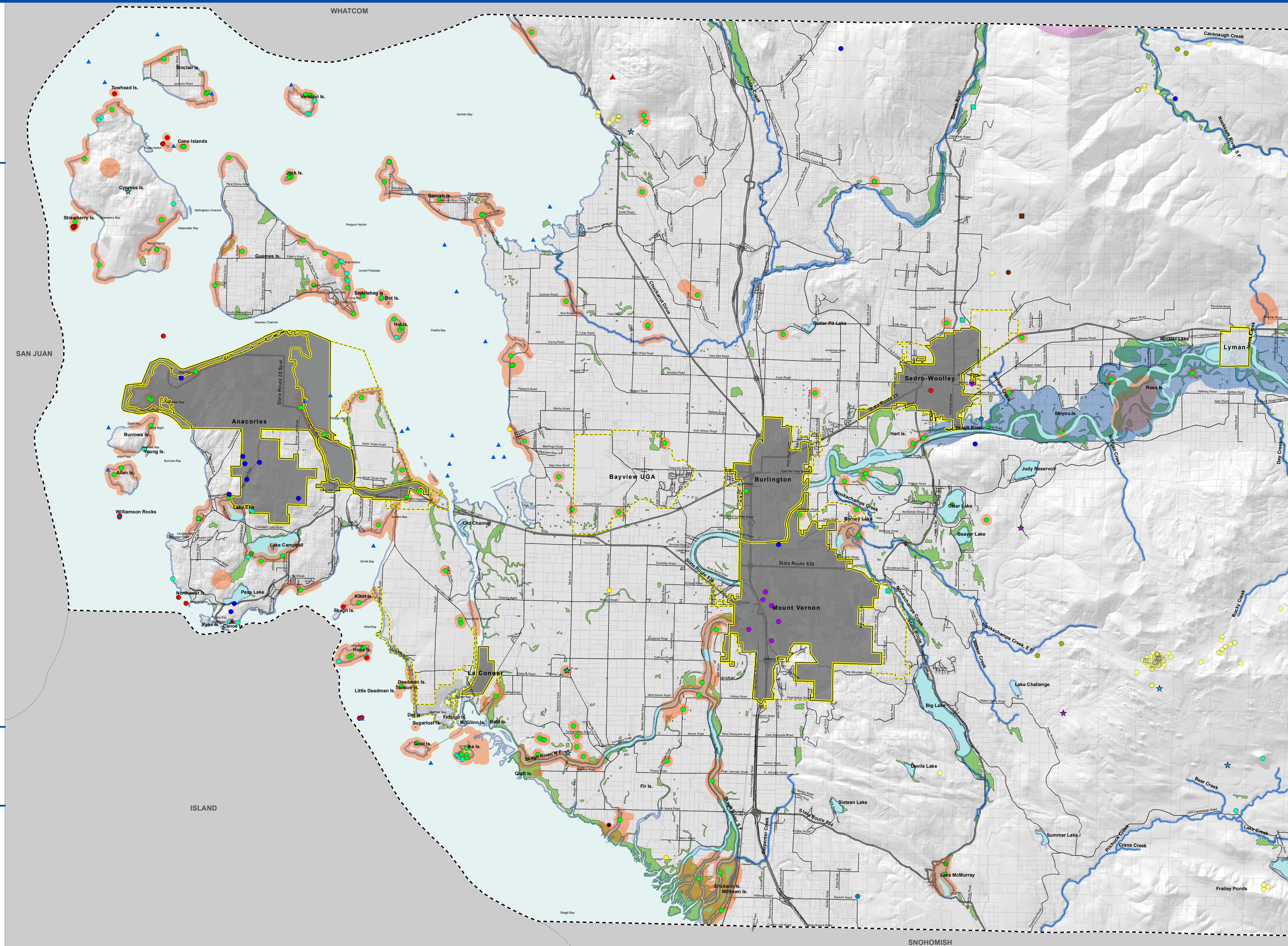
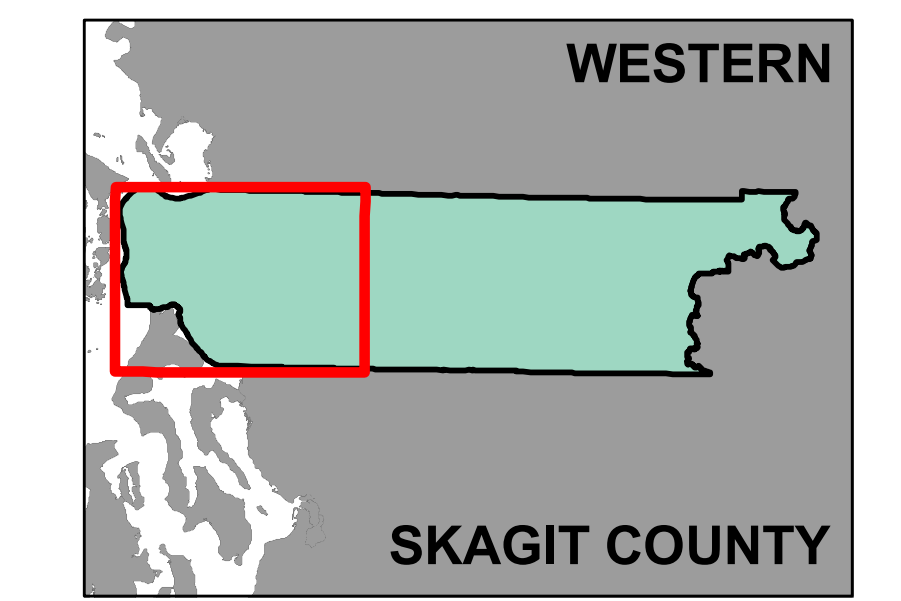
- MAP LEGEND**
- Shoreline Jurisdiction
  - SMP Streams
  - SMP Waterbodies
  - Potentially Associated Wetlands
  - City Boundaries
  - UGA Boundaries
  - County Boundary
  - Bald Eagle Buffer<sup>1</sup>, 2010
  - Spotted Owl Buffer<sup>1</sup>, 2010
  - Birds and Mammals<sup>1</sup>, 2010
  - Great gray owl
  - Great blue heron
  - Marbled murrelet
  - Merlin
  - Mountain quail
  - Northern goshawk
  - Osprey
  - Peregrine falcon
  - Pileated woodpecker
  - Snowy owl
  - Vaux's swift
  - Gray wolf
  - Grizzly bear
  - Lynx
  - Marten
  - Western gray squirrel
  - Wolverine
  - Cascades frog
  - Columbia spotted frog
  - Tailed frog
  - Western toad
  - Pacific lamprey
  - Salish sucker
  - Spotted Owl
  - Seal and Sea Lion Haulout Site



Date: 3/20/2011  
 File Name: Fig23\_habitats\_birds\_mammals.mxd  
 Data source: <sup>1</sup>Washington Department of Fish and Wildlife, Skagit County

**THE WATERSHED COMPANY**

All features depicted on this map are approximate. They have not been formally delineated or surveyed and are intended for planning purposes only. Additional site-specific evaluation may be needed to confirm/verify information shown on this map.



SNOHOMISH