

FIGURE 27 a.

WATER QUALITY

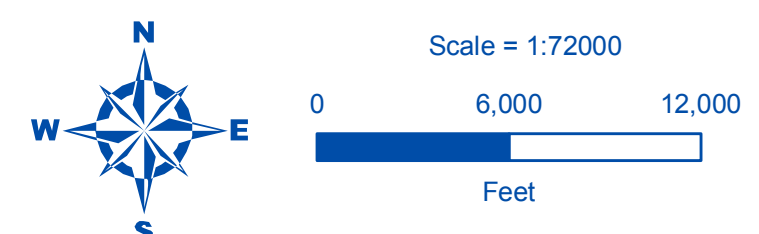


SKAGIT COUNTY SHORELINE MASTER PROGRAM

DRAFT

MAP LEGEND

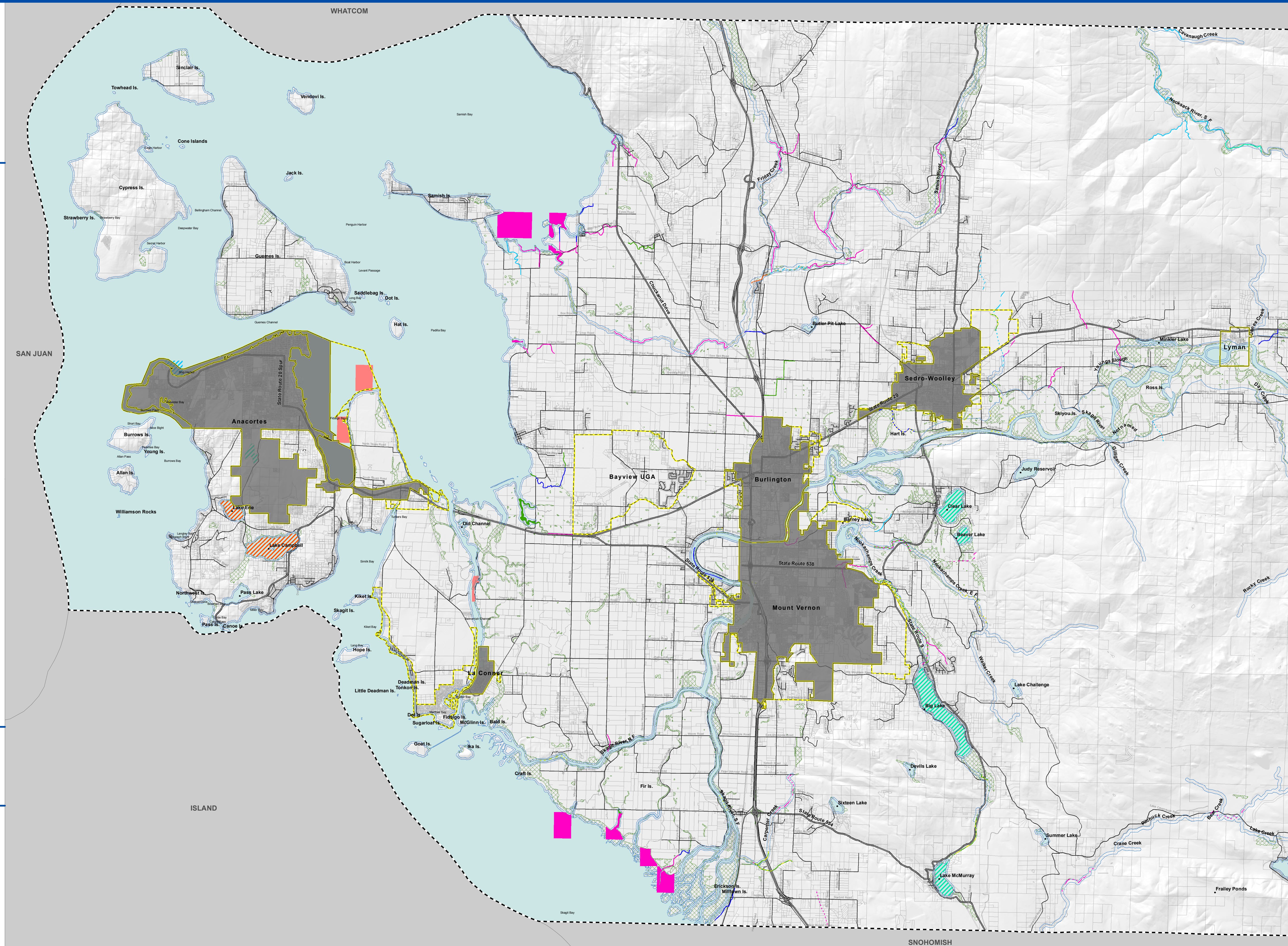
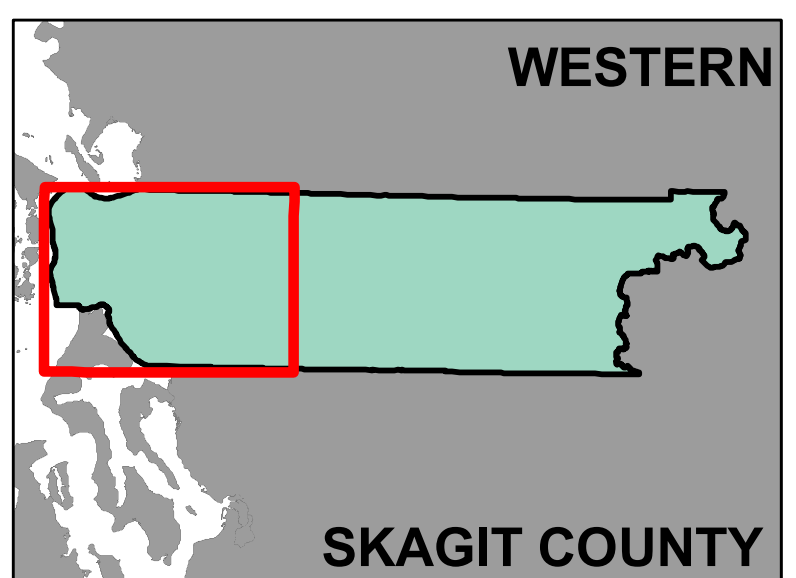
- Category 5 Water¹, 2008
- Benzo[a]anthracene
- Chrysene
- Dissolved Oxygen
- Fecal Coliform
- Fine Sediment
- PCB
- Temperature
- Turbidity
- pH
- Category 4 Waters¹, 2008
- ▨ Fecal Coliform
- ▨ Fish Habitat
- ▨ Invasive Exotic Species
- ▨ Temperature
- ▨ Total Phosphorus
- Shoreline Jurisdiction
- SMP Streams
- SMP Waterbodies
- ▨ Potentially Associated Wetlands
- ▭ City Boundaries
- ⌚ County Boundary



Date: 3/20/2011
 File Name: Fig25_water_quality.mxd
 Data source: Washington Department of Ecology 2008 Water Quality Assessment 305(b) Report, Skagit County.
 Note: All area waterward of OHWM, small islands, islets, rocks and reefs that are not shown on this map are included in shoreline jurisdiction.



All features depicted on this map are approximate. They have not been formally delineated or surveyed and are intended for planning purposes only. Additional site-specific evaluation may be needed to confirm/verify information shown on this map.



SNOHOMISH