

FIGURE 28a.

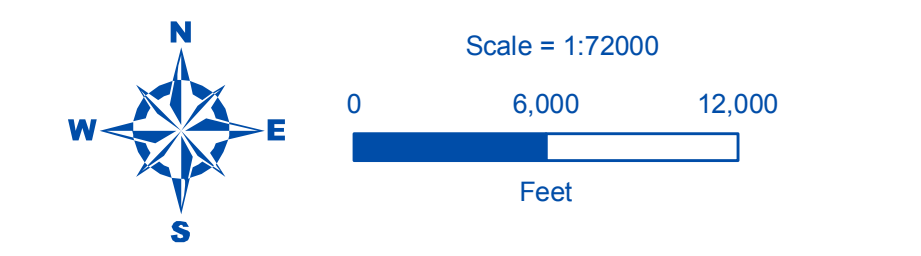
ECOLOGY PERMITTED SITES



SKAGIT COUNTY SHORELINE MASTER PROGRAM

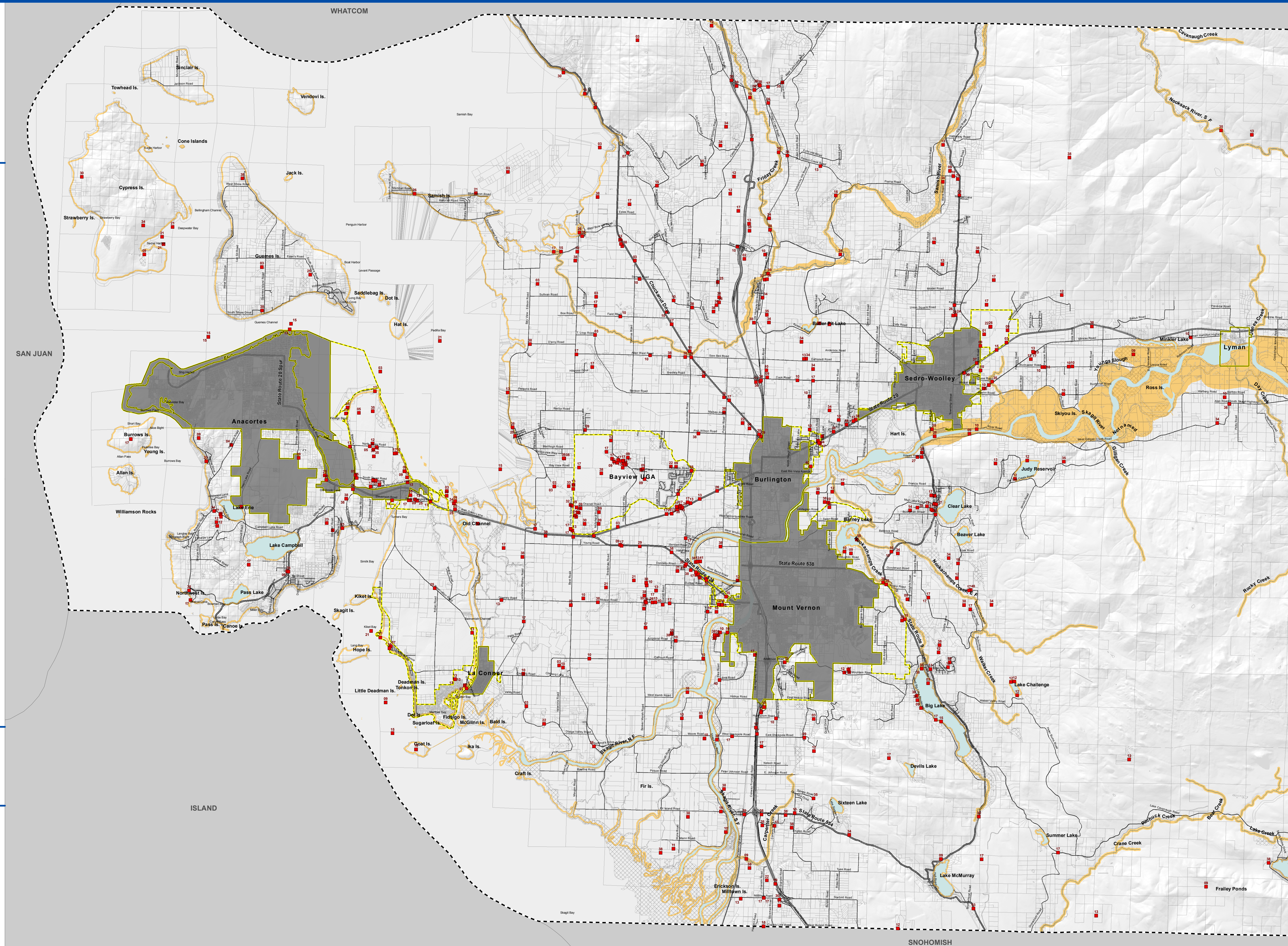
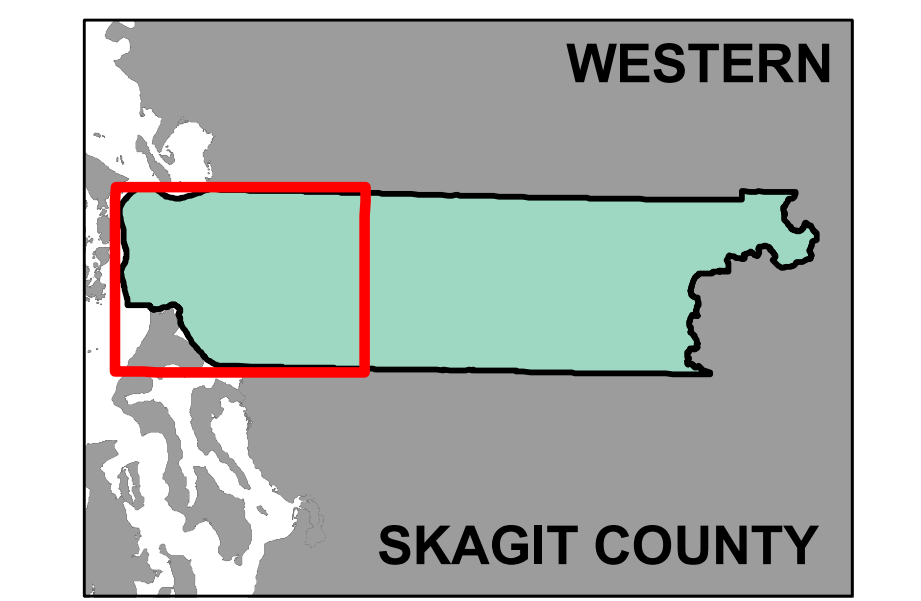
DRAFT

- MAP LEGEND**
- Ecology Permitted Sites<sup>1</sup>
  - 01 - 401CZM Mitigation Site
  - 02 - 401CZM OLD Mitigation Site
  - 03 - 401CZM Project Site
  - 04 - Air Qual Local Authority Reg
  - 05 - Air Qual Oper Permit Source
  - 06 - Air Qual Synth Minor Source
  - 07 - Biosolids
  - 08 - Composting
  - 09 - Construction SW GP
  - 10 - Dairy
  - 11 - Dairy Unpermitted
  - 12 - Dam Site
  - 13 - Emergency/Haz Chem Rpt TIER2
  - 14 - Energy Recovery
  - 15 - Enforcement Final
  - 16 - General Permit Storm Water Ind
  - 17 - Hazardous Waste Generator
  - 18 - Hazardous Waste Planner
  - 19 - Independent Cleanup
  - 20 - Independent Remedial Actn Prg
  - 21 - Industrial IP
  - 22 - Industrial SW GP
  - 23 - Land Application
  - 24 - Landfill
  - 25 - Local Source Control
  - 26 - LUST Facility
  - 27 - Moderate Risk Waste
  - 28 - Municipal IP
  - 29 - Municipal SW Phase II Western WA GP
  - 30 - Non Enforcement Final
  - 31 - ORA Project
  - 32 - Recycling
  - 33 - Revised Site Visit Program
  - 34 - Sand and Gravel GP
  - 35 - State Cleanup Site
  - 36 - Storage & Handling
  - 37 - Toxics Release Inventory
  - 38 - Underground Storage Tank
  - 39 - Upland Fish Hatchery GP
  - 40 - Voluntary Cleanup Sites
  - 41 - Water Treatment Plant GP
  - Shoreline Jurisdiction
  - ~ SMP Streams
  - SMP Waterbodies
  - ⊗ Potentially Associated Wetlands
  - City Boundaries
  - UGA Boundaries
  - County Boundary



Date: 3/20/2011  
 File Name: Fig26\_ecology\_permitted\_sites.mxd  
 Data source: Washington Department of Ecology, Skagit County  
 Note: All area waterward of OHWM, small islands, islets, rocks and reefs that are not shown on this map are included in shoreline jurisdiction.

**THE WATERSHED COMPANY**  
 All features depicted on this map are approximate. They have not been formally delineated or surveyed and are intended for planning purposes only. Additional site-specific evaluation may be needed to confirm/verify information shown on this map.



WHATCOM, SAN JUAN, ISLAND, SNOHOMISH