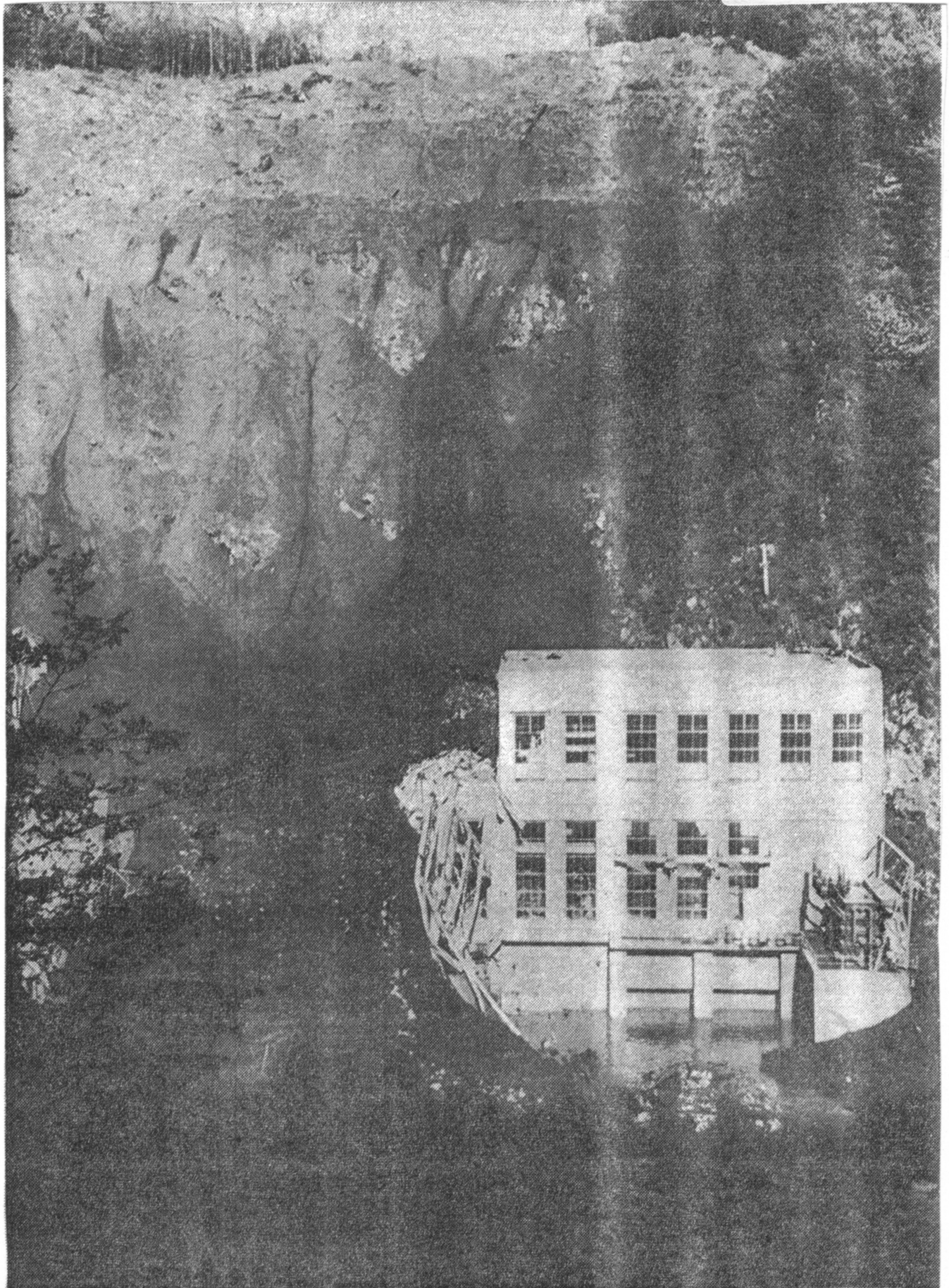


SKAGIT VALLEY HERALD

MAY 22, 1965



SKAGIT VALLEY HERALD

Skagit Valley Herald
Sat., May 22, 1965



WHERE THE SLIDES BEGAN—More than 300 feet above the Lower Baker River power house the mountain standing over the Puget Power facility reaches its peak. Here slides which took out the power house Tuesday began their devastating descent. Note the "back" which has developed around the timber line. At right is a road which was closed immediately after slide began.