



Skagit River General Investigation

Board of County Commissioners

Status Update

05/06/14

An aerial photograph of a wide river, likely the Baker River, with a bridge crossing it. The surrounding area includes residential neighborhoods, green fields, and some industrial or commercial buildings. The image is slightly faded to serve as a background for the text.

General Investigation Presentation Outline

- Overview
- Corps Planning Process
- Tentatively Selected Plan
 - Baker Project Storage
- Next Steps

General Investigation

Basin Flooding

- **1% ACE**
 - 100-yr Flood
 - 225,400 cfs at Concrete Gauge
 - ~ 45' at Concrete Gauge
- **4% ACE**
 - 25-yr Flood
 - 165,300 cfs at Concrete Gauge
 - ~ 42' at Concrete Gauge
 - Approximate level of lower basin protection
- **Recent Floods**
(Concrete Gauge)
 - 2003 (10/21)
 - 42.21'
 - 166,000 cfs
 - 1995 (11/29)
 - 41.57'
 - 160,000 cfs
 - 1990 (11/10)
 - 40.20'
 - 149,000 cfs

General Investigation Overview

- Phases
 - Reconnaissance
 - Feasibility
 - Pre-Construction Engineering and Design
 - Construction
 - Operation and Maintenance
- Goal
 - Reduce flood damages and risks to life safety over the 50 year project life



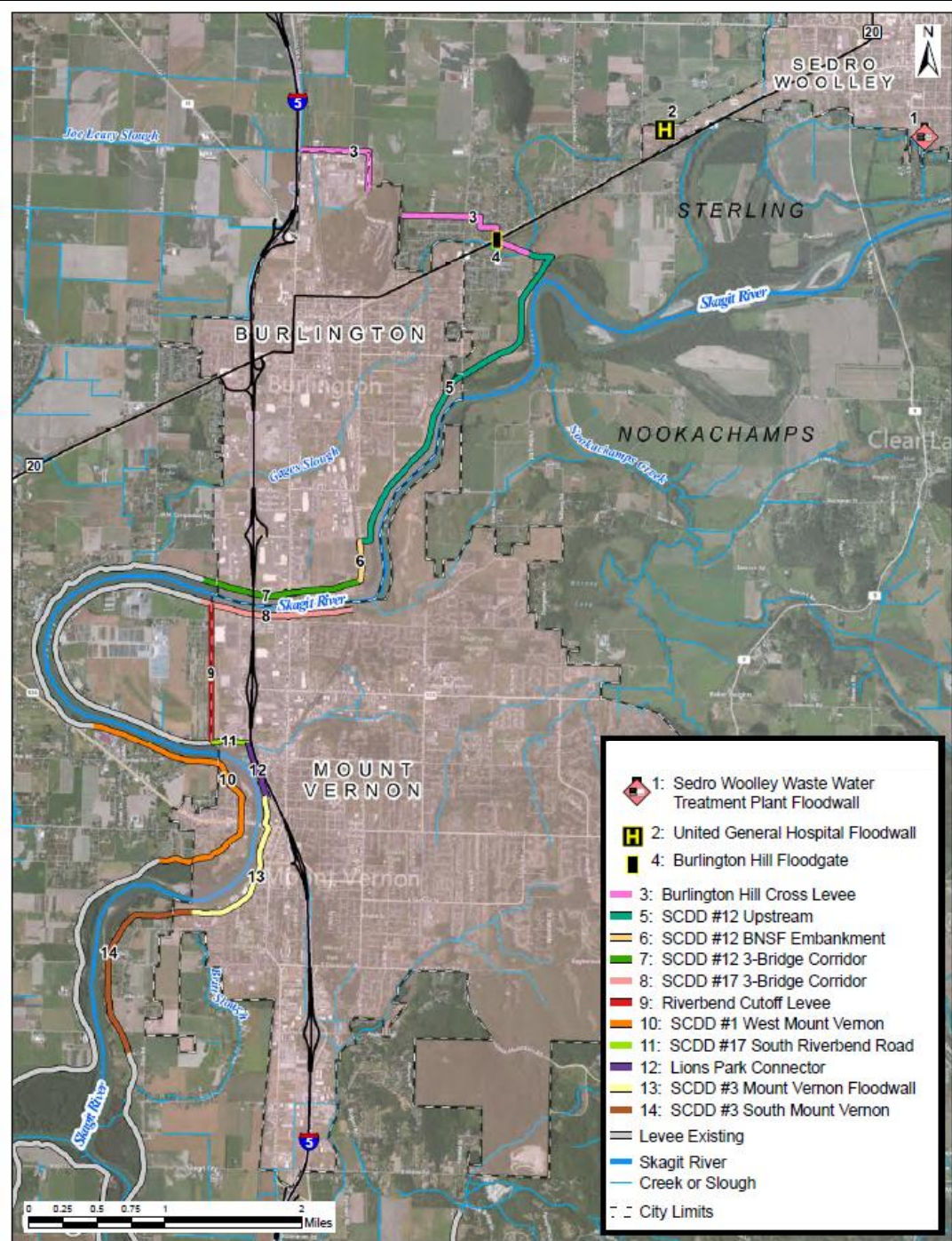
General Investigation USACE Planning Process

- Management Measures
- Preliminary Array of Alternatives
- Final Array of Alternatives
 - No Action
 - Swinomish Bypass
 - Joe Leary Slough Bypass
 - Comprehensive Urban Levee Improvement
- Measures in Common Amongst Alternatives
 - Baker Project Dam Storage
 - Site-specific floodwalls/levees, e.g. SWWWTP
 - Non-structural, e.g. Flood Warning, Gauges, Real Estate

General Investigation

Current Status

- Tentatively Selected Plan
 - Synonymous with Preferred Alternative
 - Comprehensive Urban Levee Improvement Plan
 - ~9 miles of improved levee
 - ~3 miles of new levee
 - Baker Project Dam Storage
 - Site specific measures
 - Non-structural measures



-  1: Sedro Woolley Waste Water Treatment Plant Floodwall
-  2: United General Hospital Floodwall
-  4: Burlington Hill Floodgate
-  3: Burlington Hill Cross Levee
-  5: SCDD #12 Upstream
-  6: SCDD #12 BNSF Embankment
-  7: SCDD #12 3-Bridge Corridor
-  8: SCDD #17 3-Bridge Corridor
-  9: Riverbend Cutoff Levee
-  10: SCDD #1 West Mount Vernon
-  11: SCDD #17 South Riverbend Road
-  12: Lions Park Connector
-  13: SCDD #3 Mount Vernon Floodwall
-  14: SCDD #3 South Mount Vernon
-  Levee Existing
-  Skagit River
-  Creek or Slough
- City Limits



General Investigation Baker Project Dam Storage

- Existing Hard Storage
 - 74,000 Acre Feet at Upper Baker on 11/15
 - 16,000 Acre Feet on 10/15
 - 58,000 Acre Feet on 11/15
- Additional Hard Storage Opportunity
 - FERC License 2008 107 (a) & 107 (b)
 - 74,000 Acre Feet at Upper Baker on 10/15
 - Up to 29,000 Acre Feet at Lower Baker on 10/1
 - PSE Estimates 20,000 Acre Feet available without dam modifications i.e. operational modification only

An aerial photograph of a dam and reservoir, surrounded by dense green forest. The dam is a concrete structure with a spillway, and the reservoir is a large body of water. The background is a thick forest of trees.

General Investigation

Next Steps

- Concurrent Review
 - Integrated draft Feasibility Report/EIS
 - Technical, Legal, Policy Reviews
- National Environmental Policy Act
 - 45 Public Comment Period, Federal Register
- Additional Design and Analysis
- Agency Decision Milestone
 - Final FR/EIS
- Chief's Report
 - Congressional Authorization