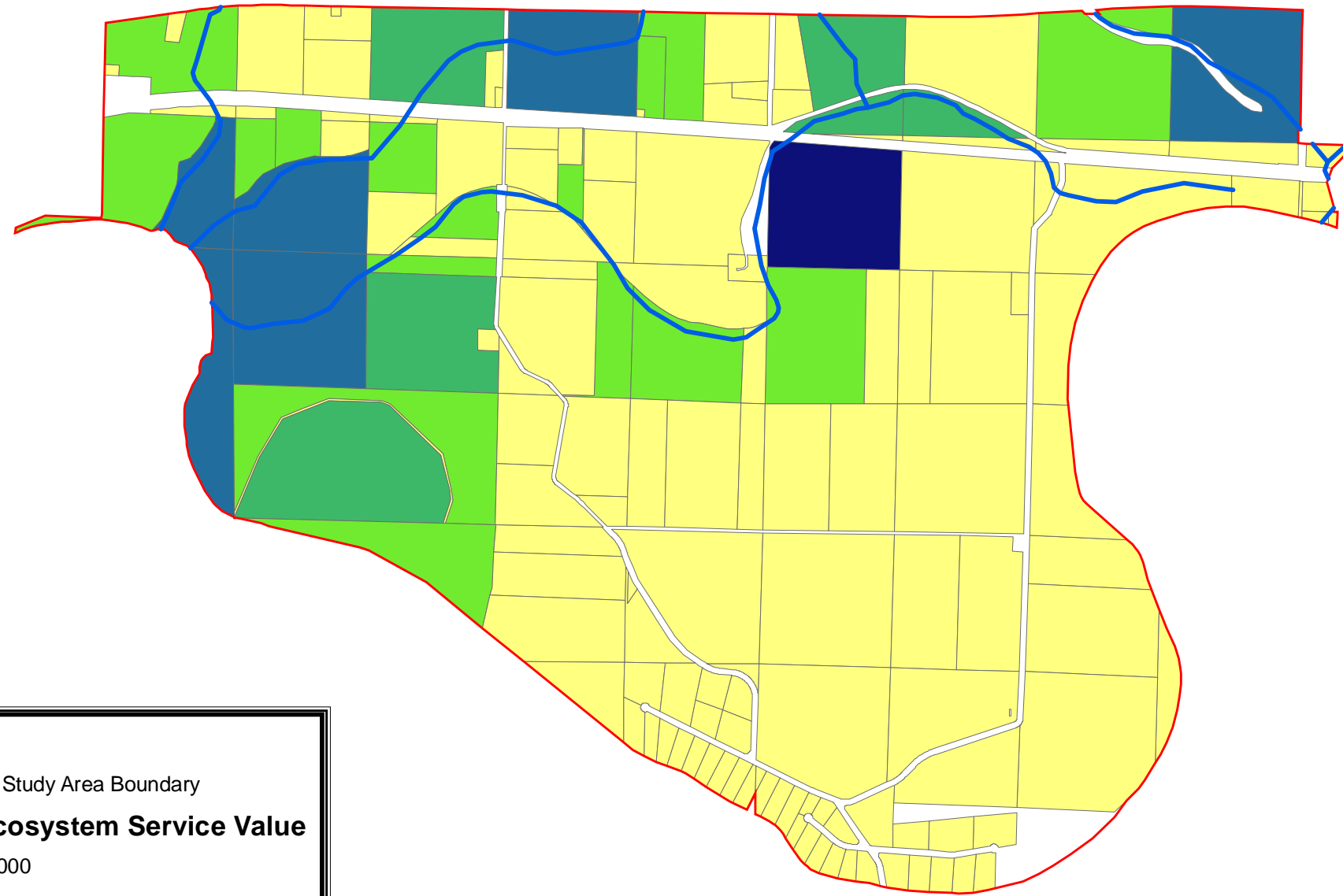


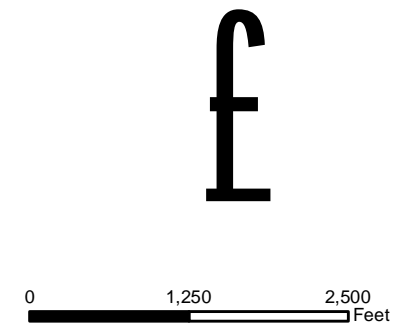
Total Ecosystem Service Value Flows by Parcel for Cockerham Island (in 2005 USD) under Current Conditions



— Creeks
 Cockerham Study Area Boundary

Current Total Ecosystem Service Value

	\$-1,011 - 5,000
	\$5,001 - 15,000
	\$15,001 - 30,000
	\$30,001 - 65,000
	\$65,001 - 72,000



\\Bellingham1\Bell11\Projects\0366_GeoEngineers\060366-01_CockerhamIsland\GISANCHOR\Figure B-2.mxd awr 04/23/2007 8:52 AM



TOTAL EXISTING ECOSYSTEM SERVICE VALUE BY PARCELS

FIGURE B - 4

Data Sources: Interstates, state routes, and roads from TIGER 2000.
 County boundaries, cities, and waterbodies from Department of Ecology.
 Ortho Photo from Skagit County
 Lambert Conformal Conic, Washington State Plane North,
 North American Datum 1983

Note: This drawing is for informational purposes. It is intended to assist in showing features discussed in an attached document. All locations are approximate. It is unlawful to copy or reproduce all or any part thereof, whether for personal use or resale, without permission.