

FIRE ALARM SYMBOL LIST

NOTE: This is a standard symbol list and not all items listed may be used.

Abbreviations		Connections / Equipment		General	
(E)	EXISTING		JUNCTION BOX		DETAIL NUMBER AND SHEET LOCATION
(N)	NEW		FIRE/SMOKE DAMPER		KEYED NOTE
(X)	DEMOLISH		FIRE/SMOKE DAMPER		SECTION NUMBER AND SHEET LOCATION
AFF	ABOVE FINISHED FLOOR				
AHJ	AUTHORITY HAVING JURISDICTION		MAGNETIC DOOR HOLDER		
ASD	AIR SAMPLING DETECTOR				
AS	AIR SAMPLING POINT				
AUX	AUXILIARY		FIRE ALARM CONTROL PANEL		
AWG	AMERICAN WIRE GAUGE		NOTIFICATION APPLINACE CIRCUIT PANEL		
BAS	BUILDING AUTOMATION SYSTEM				
BDC	BEAM DETECTOR CONTROLLER		FIRE ALARM ANNUNCIATOR PANEL		
C	CONDUIT				
CLG	CEILING		FIRE ALARM COMMUNICATOR - CELLULAR		
CO	CARBON MONOXIDE		BEAM DETECTOR CONTROLLER WITH REMOTE TEST		
COORD	COORDINATE				
dB	DECIBEL		SMOKE DETECTOR (SB = SOUNDER BASE, R = RELAY BASE)		
DIA	DIAMETER		BEAM TYPE SMOKE DETECTOR (BT = TRANSMITTER, BR = RECEIVER/REFLECTOR)		
DIV	DIVISION				
DTL	DETAIL		HEAT DETECTOR (+F = FIXED, HIGH TEMP)		
DWG	DRAWING		PULL STATION		
EA	EACH		SPRINKLER FLOW SWITCH WITH INPUT MODULE		
EMT	ELECTRICAL METALLIC TUBING		SPRINKLER TAMPER SWITCH WITH INPUT MODULE		
EVAC	EMERGENCY VOICE/ALARM COMMUNICATION SYSTEM				
FA	FIRE ALARM		SPRINKLER POST INDICATOR VALVE WITH INPUT MODULE		
FAA	FIRE ALARM ANNUNCIATOR		HORN/STROBE COMBINATION (# INDICATES MINIMUM CANDELA RATING, C = CEILING MOUNTED)		
FAC	FIRE ALARM COMMUNICATOR		STROBE, CEILING MOUNTED (# INDICATES MINIMUM CANDELA RATING)		
FACU	FIRE ALARM CONTROL UNIT		STROBE, WALL MOUNTED (# INDICATES MINIMUM CANDELA RATING)		
FACP	FIRE ALARM CONTROL PANEL				
FATC	FIRE ALARM TERMINAL CABINET				
FF	FINISHED FLOOR		ADDRESSABLE INPUT MODULE		
FMC	FLEXIBLE METAL CONDUIT		ADDRESSABLE OUTPUT MODULE		
FT	FOOT, FEET		ISOLATOR MODULE		
GAP	GRAPHIC FIRE ALARM ANNUNCIATOR		SURGE SUPPRESSOR		
HH	HANDHOLE				
HT	HEIGHT				
ID	IDENTIFICATION				
IMC	INTERMEDIATE METAL CONDUIT				
IN	INCH, INCHES				
LED	LIGHT EMITTING DIODE				
LOC	LOCAL OPERATING CONSOLE				
LV	LOW VOLTAGE				
mA	MILLIAMPERE				
MIN	MINIMUM				
MISC	MISCELLANEOUS				
N/A	NOT APPLICABLE				
NAC	NOTIFICATION APPLINACE CIRCUIT				
NTS	NOT TO SCALE				
PG	PROTECTIVE GUARD				
PNL	PANEL				
PVC	POLYVINYL CHLORIDE				
PWR	POWER				
QTY	QUANTITY				
REF	REFERENCE				
RFI	REQUEST FOR INFORMATION				
SHT	SHEET				
SIM	SIMILAR				
SLC	SIGNALING LINE CIRCUIT				
STD	STANDARD				
TBD	TO BE DETERMINED				
TYP	TYPICAL				
UG	UNDERGROUND				
UL	UNDERWRITERS LABORATORIES				
UPS	UNINTERRUPTIBLE POWER SUPPLY				
V	VOLT, VOLTS				
VFD	VARIABLE FREQUENCY DRIVE				
WG	WIREGUARD				
WP	WEATHERPROOF				

FIRE ALARM SCOPE NOTES:

- A. PROVIDE A NEW ADDRESSABLE FIRE ALARM SYSTEM THROUGHOUT THE BUILDING.
- B. PROVIDE MANUAL PULL STATIONS AT ALL BUILDING EXITS.
- C. PROVIDE AREA DETECTION THROUGHOUT CORRIDORS, SPACES OPEN TO CORRIDORS, AND ADDITIONAL SPACES AS SHOWN ON DRAWINGS.
- D. PROVIDE AUDIBLE NOTIFICATION THROUGHOUT THE BUILDING.
- E. PROVIDE VISUAL NOTIFICATION IN ALL COMMON USE AND PUBLIC SPACES.
- F. ELEVATOR IS OLD AND NOT CAPABLE OF RECALL OR ANY LIFE/SAFETY FUNCTIONS.

FIRE ALARM INSTALLATION NOTES:


- A. 2ND AND 3RD FLOOR HARD CEILINGS HAVE ACCESS ABOVE VIA HATCHES LOCATED THROUGHOUT THE FLOORS.
- B. PREFERRED RACEWAY ROUTING SHOWN IN AESTHETICALLY SENSITIVE AREAS.
- C. INSTALL CABLING CONCEALED IN WALLS AND ABOVE CEILINGS.
- D. FLUSH MOUNT DEVICES AND APPLIANCES.
- E. WHERE SURFACE MOUNT APPLIANCES OR DEVICES ARE REQUIRED, UTILIZE MATCHING MANUFACTURER BACKBOXES.
- F. WHERE SURFACE RACEWAY IS REQUIRED, PAINT TO MATCH EXISTING ADJACENT SURFACE.

FIRE ALARM DEMO NOTES:

- A. DEMOLISH THE EXISTING FIRE ALARM SYSTEM IN ITS ENTIRETY INCLUDING, BUT NOT LIMITED TO: EQUIPMENT, DEVICES, APPLIANCES, RACEWAY, AND CABLING.
- B. DEMO DRAWINGS ARE BASED ON CASUAL FIELD OBSERVATION AND MAY CONTAIN ERRORS. CONFIRM EXACT QUANTITY AND LOCATION OF EQUIPMENT, DEVICES, AND APPLIANCES ON SITE.
- C. PROVIDE BLANK FACEPLATES ON ALL EXISTING DEVICE AND APPLIANCE LOCATIONS. PAINT TO MATCH ADJACENT SURFACE.
- D. REMOVE EXISTING CONDUIT/RACEWAY ABOVE ACCESSIBLE CEILINGS AND OPEN TO STRUCTURE SPACES, CUT CONDUIT FLUSH WITH WALL, FLOOR, OR CEILING AND PATCH AND PAINT TO MATCH ADJACENT SURFACE.
- E. REMOVE ALL CABLING. EXISTING CABLING CAN NOT BE REUSED.

SHEET INDEX

FA0.0	COURTHOUSE - SYMBOL LIST AND GENERAL NOTES - FIRE ALARM
FAD2.0	COURTHOUSE - DEMO FIRST FLOOR PLAN - FIRE ALARM
FAD2.1	COURTHOUSE - DEMO SECOND FLOOR PLAN - FIRE ALARM
FAD2.2	COURTHOUSE - DEMO THIRD FLOOR PLAN - FIRE ALARM
FAD2.3	COURTHOUSE - DEMO FOURTH FLOOR PLAN - FIRE ALARM
FA2.0	COURTHOUSE - FIRST FLOOR PLAN - FIRE ALARM
FA2.1	COURTHOUSE - SECOND FLOOR PLAN - FIRE ALARM
FA2.2	COURTHOUSE - THIRD FLOOR PLAN - FIRE ALARM
FA2.3	COURTHOUSE - FOURTH FLOOR PLAN - FIRE ALARM
FA4.0	COURTHOUSE - DETAILS - FIRE ALARM



INTERFACE
ENGINEERING

PROJECT : 2022-0463
CONTACT : JAROD MYRICK

100 SW Main Street, Suite 1600
Portland, OR 97204
TEL: 503.382.2266
www.interfaceengineering.com



SKAGIT COUNTY
COURTHOUSE FIRE ALARM SYSTEM UPGRADE

205 W KINCAID ST
MOUNT VERNON, WA 98273

SHEET TITLE

COURTHOUSE -
SYMBOL LIST AND
GENERAL NOTES - FIRE
ALARM

REVISIONS		
	100% DD	08/10/22
	100% CD	10/12/22

DRAWN BY		JBM
CHECKED BY		JJR
JOB NO.		2022-0463
DATE		10/12/2022
SHEET NUMBER		

FA0.0



SKAGIT COUNTY
ADMINISTRATION BUILDING FIRE ALARM SYSTEM UPGRADE
700 S 2ND ST
MOUNT VERNON, WA 98273

SHEET TITLE
COURTHOUSE - DEMO
FIRST FLOOR PLAN -
FIRE ALARM

REVISIONS		
100% DD	08/10/22	
100% CD	10/12/22	

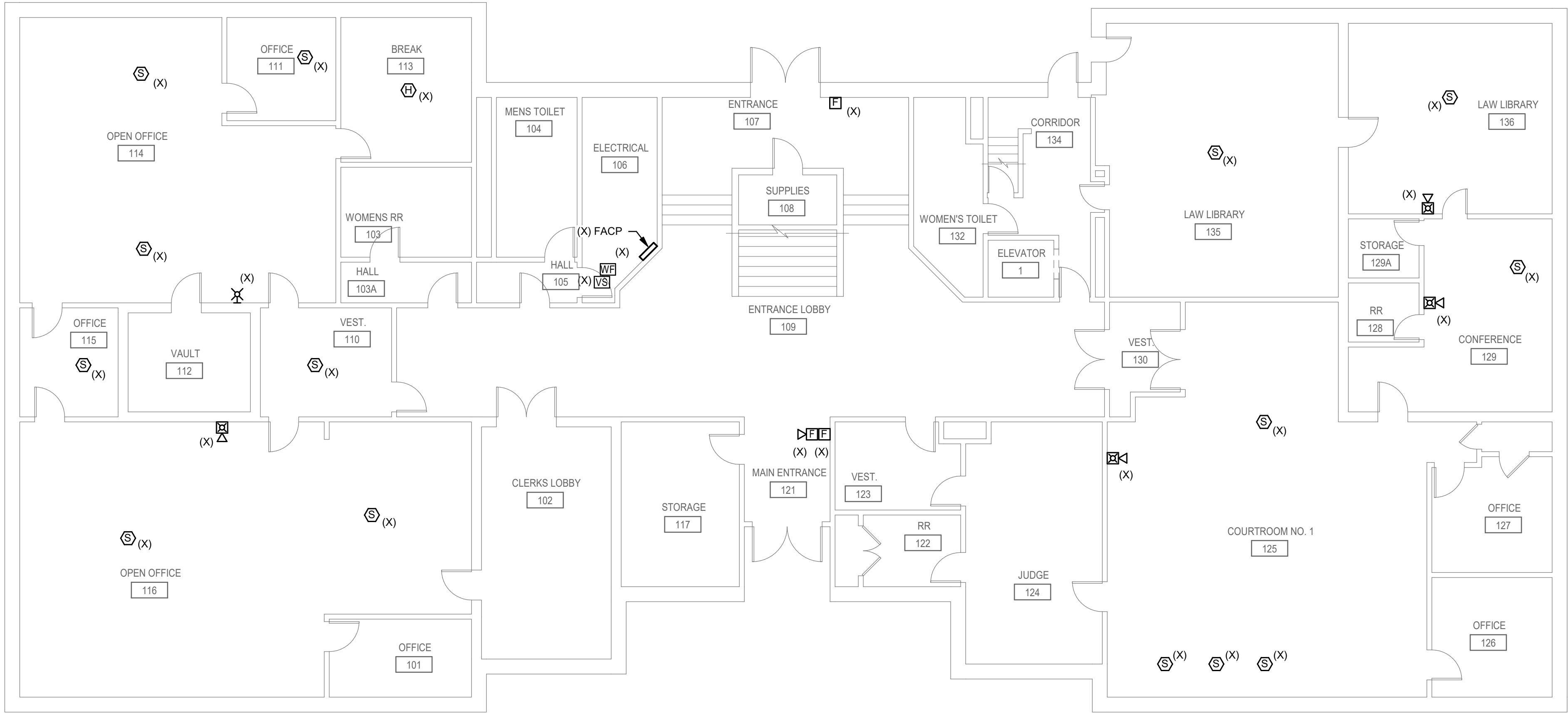
DRAWN BY
JBM

CHECKED BY
JJR

JOB NO.
2022-0463

DATE
10/12/2022

SHEET NUMBER
FAD2.0



1 FIRST FLOOR DEMO PLAN - FIRE ALARM

0' 4' 8' 16'

1/8" = 1'-0"



SKAGIT COUNTY
ADMINISTRATION BUILDING FIRE ALARM SYSTEM UPGRADE
700 S 2ND ST
MOUNT VERNON, WA 98273

SHEET TITLE
COURTHOUSE - DEMO
SECOND FLOOR PLAN -
FIRE ALARM

REVISIONS		
100% DD	08/10/22	
100% CD	10/12/22	

DRAWN BY
JBM

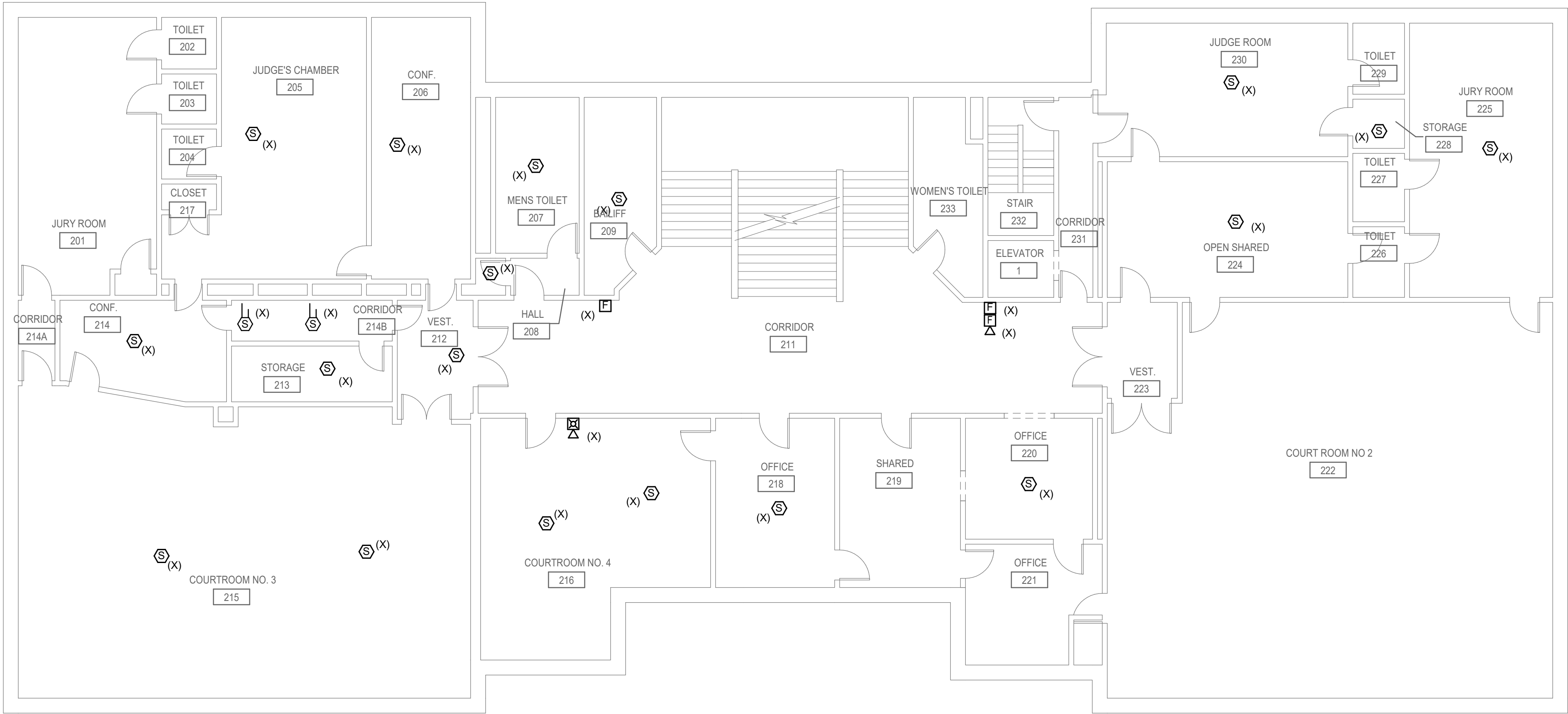
CHECKED BY
JJR

JOB NO.
2022-0463

DATE
10/12/2022

SHEET NUMBER

FAD2.1





1

SECOND FLOOR DEMO PLAN - FIRE ALARM

0' 4' 8' 16'

1/8" = 1'-0"



SKAGIT COUNTY
ADMINISTRATION BUILDING FIRE ALARM SYSTEM UPGRADE
700 S 2ND ST
MOUNT VERNON, WA 98273

SHEET TITLE
COURTHOUSE - DEMO
THIRD FLOOR PLAN -
FIRE ALARM

REVISIONS		
100% DD	08/10/22	
100% CD	10/12/22	

DRAWN BY
JBM

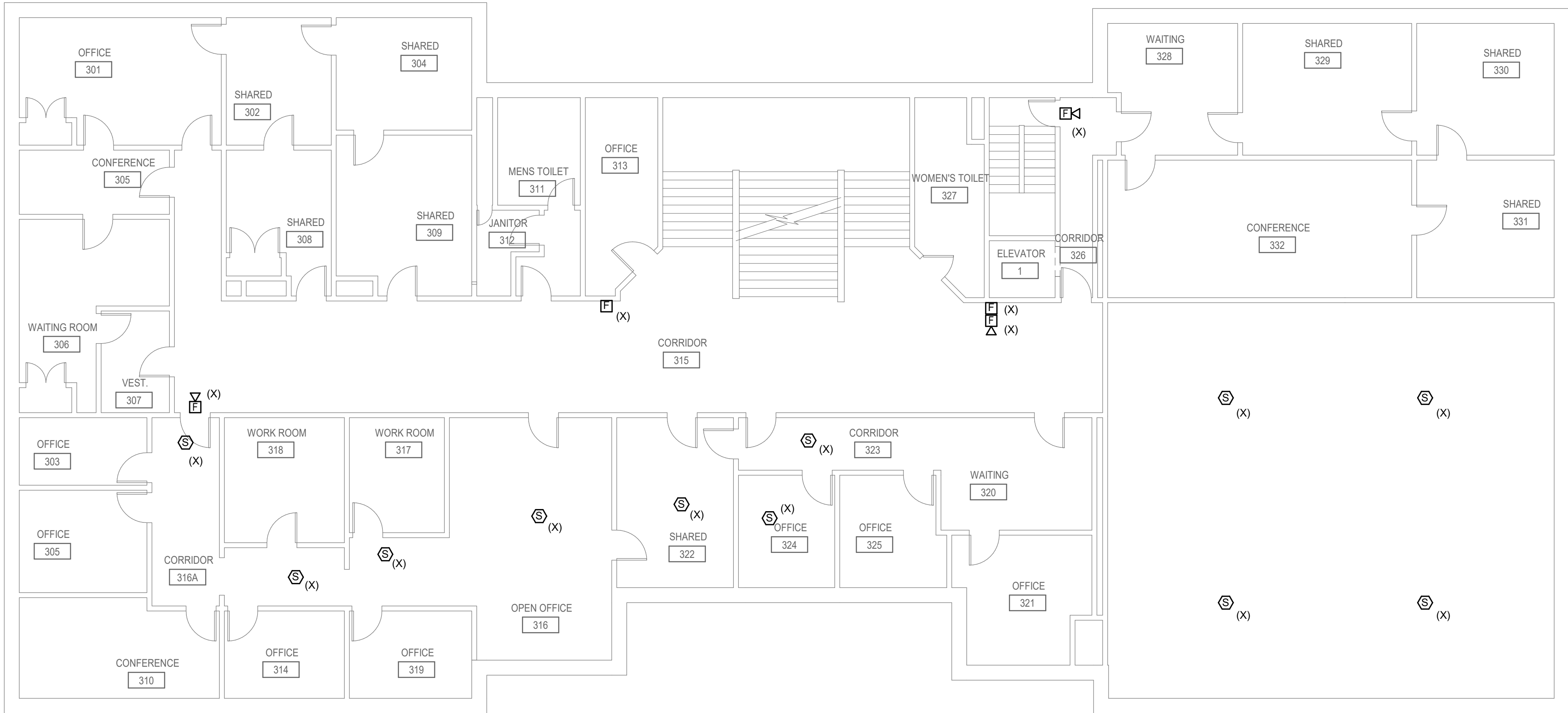
CHECKED BY
JJR

JOB NO.
2022-0463

DATE
10/12/2022

SHEET NUMBER

FAD2.2



1 THIRD FLOOR DEMO PLAN - FIRE ALARM

0' 4' 8' 16'

1/8" = 1'-0"



SKAGIT COUNTY
ADMINISTRATION BUILDING FIRE ALARM SYSTEM UPGRADE
700 S 2ND ST
MOUNT VERNON, WA 98273

SHEET TITLE

COURTHOUSE - DEMO
FOURTH FLOOR PLAN -
FIRE ALARM

REVISIONS		
100% DD	08/10/22	
100% CD	10/12/22	

DRAWN BY
JBM

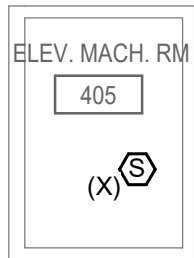
CHECKED BY
JJR

JOB NO.
2022-0463

DATE
10/12/2022

SHEET NUMBER

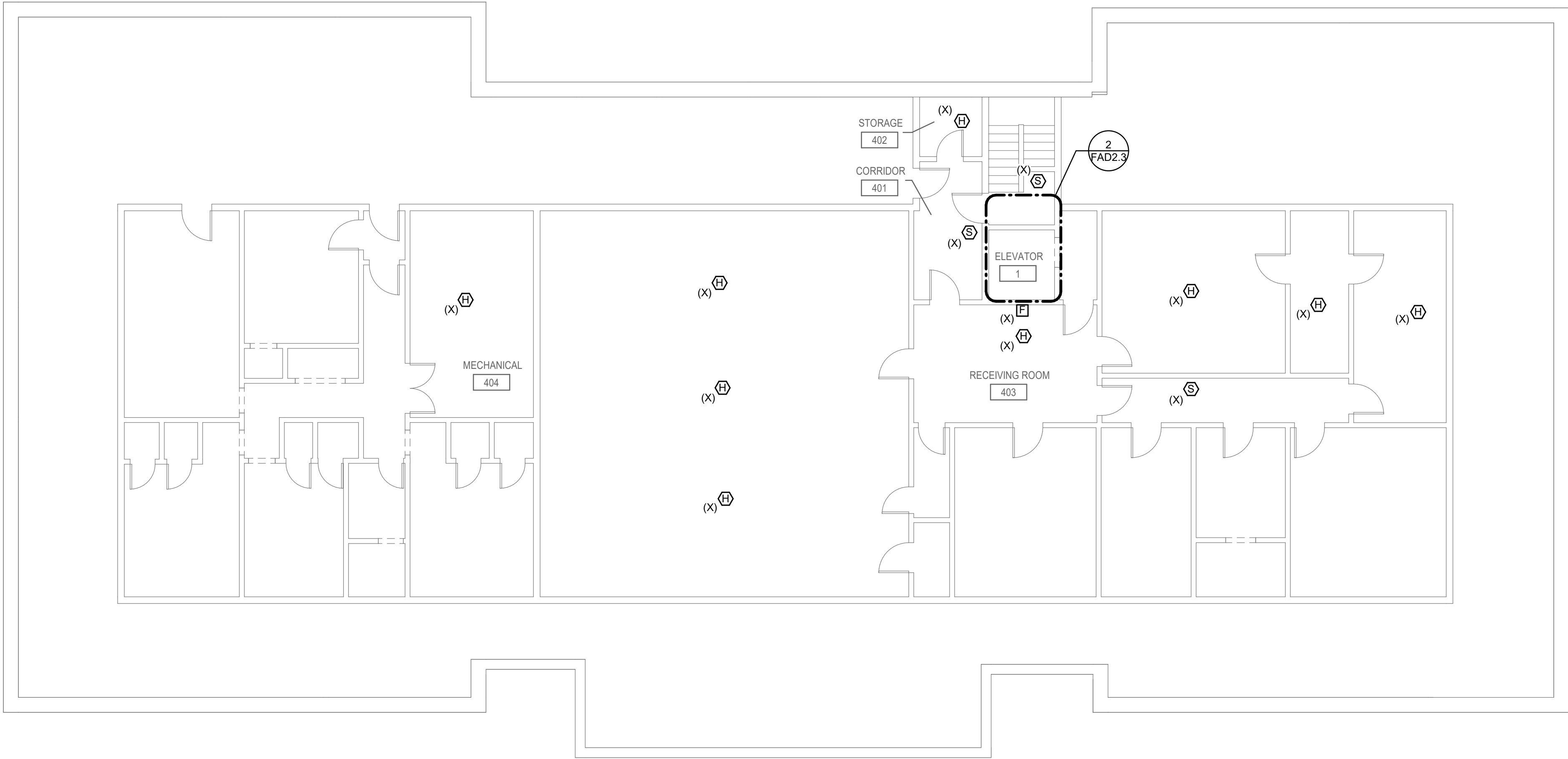
FAD2.3





2 ELEV. MACH. RM - FIRE ALARM

0' 4' 8' 16'
1/8" = 1'-0"





1 FOURTH FLOOR DEMO PLAN - FIRE ALARM

0' 4' 8' 16'
1/8" = 1'-0"

SHEET KEYNOTES

1. STUB CONDUIT ABOVE ACOUSTICAL TILE CEILING.
2. SUGGESTED SURFACE RACEWAY ROUTING. ROUTE SURFACE RACEWAY HIGH ON WALL, BELOW BEAMS.
3. SUGGESTED SURFACE RACEWAY ROUTING. COORDINATE EXACT ROUTING AND PENETRATIONS ON SITE.
4. PROVIDE 120V CIRCUIT FROM NEAREST AVAILABLE ELECTRICAL PANEL WITH SPARE CAPACITY.



PROJECT 2022-0463
CONTACT JAROD MYRICK

100 SW Main Street, Suite 1600
Portland, OR 97204
TEL: 503.382.2266
www.interfaceengineering.com



SKAGIT COUNTY
COURTHOUSE FIRE ALARM SYSTEM UPGRADE
205 W KINCAID ST
MOUNT VERNON, WA 98273

SHEET TITLE
COURTHOUSE - FIRST
FLOOR PLAN - FIRE
ALARM

REVISIONS		
100% DD	08/10/22	
100% CD	10/12/22	

DRAWN BY
JBM

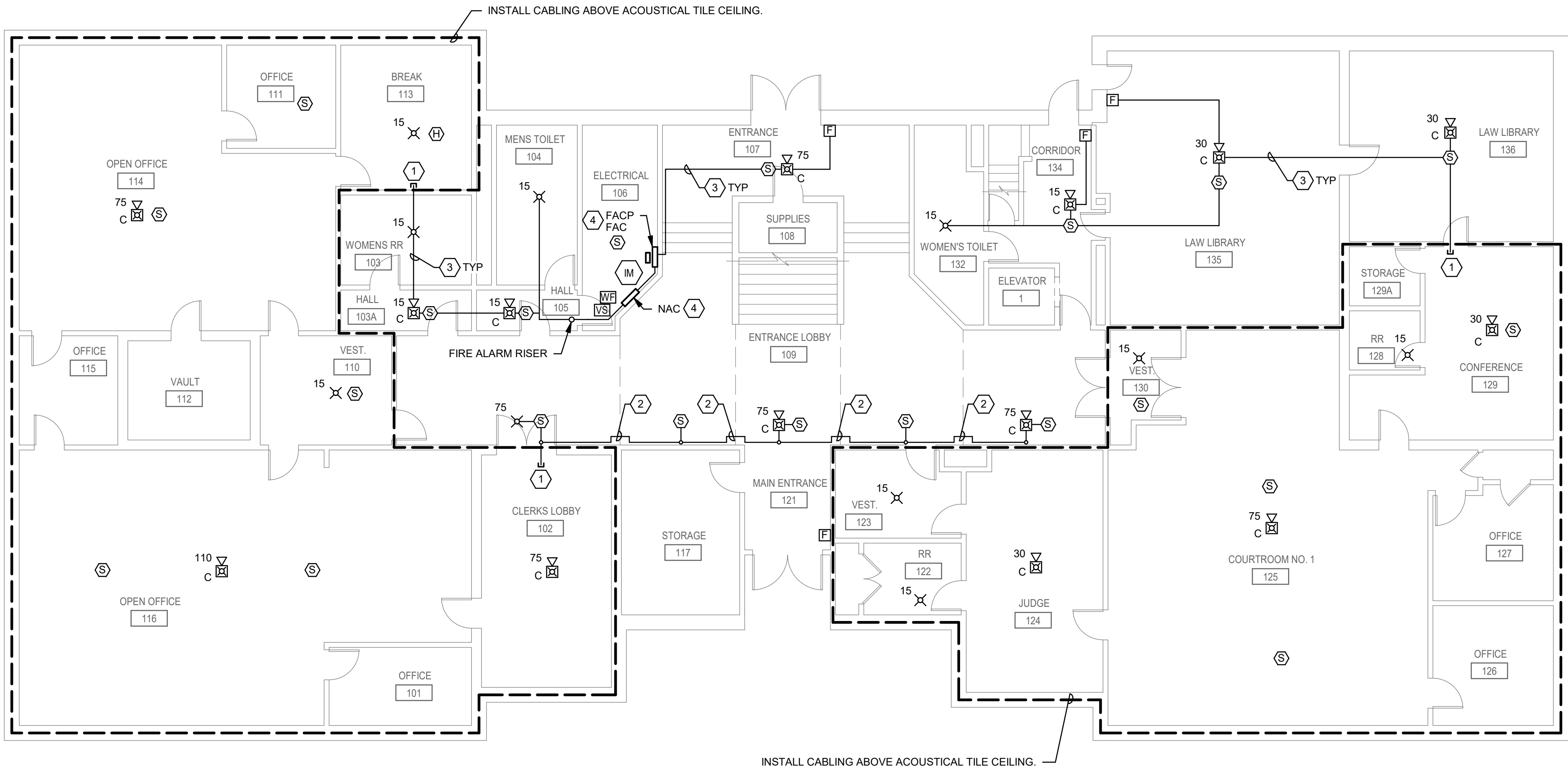
CHECKED BY
JJR

JOB NO.
2022-0463

DATE
10/12/2022

SHEET NUMBER

FA2.0



1 FIRST FLOOR PLAN - FIRE ALARM

0' 4' 8' 16'
1/8" = 1'-0"

SHEET KEYNOTES

1. INSTALL CABLING IN CRAWL SPACE ABOVE CEILING.
2. ROUTE SURFACE RACEWAY DOWN WALL FROM CEILING CRAWL SPACE, PENETRATE THROUGH WALL, AND CONNECT IN TO BACK OF APPLIANCE.
3. STUB SURFACE RAEWAY ABOVE ACOUSTICAL TILE CEILING.
4. SUGGESTED SURFACE RACEWAY ROUTING. COORDINATE EXACT ROUTING AND PENETRATIONS ON SITE.



PROJECT : 2022-0463
CONTACT : JAROD MYRICK
100 SW Main Street, Suite 1600
Portland, OR 97204
TEL: 503.382.2266
www.interfaceengineering.com



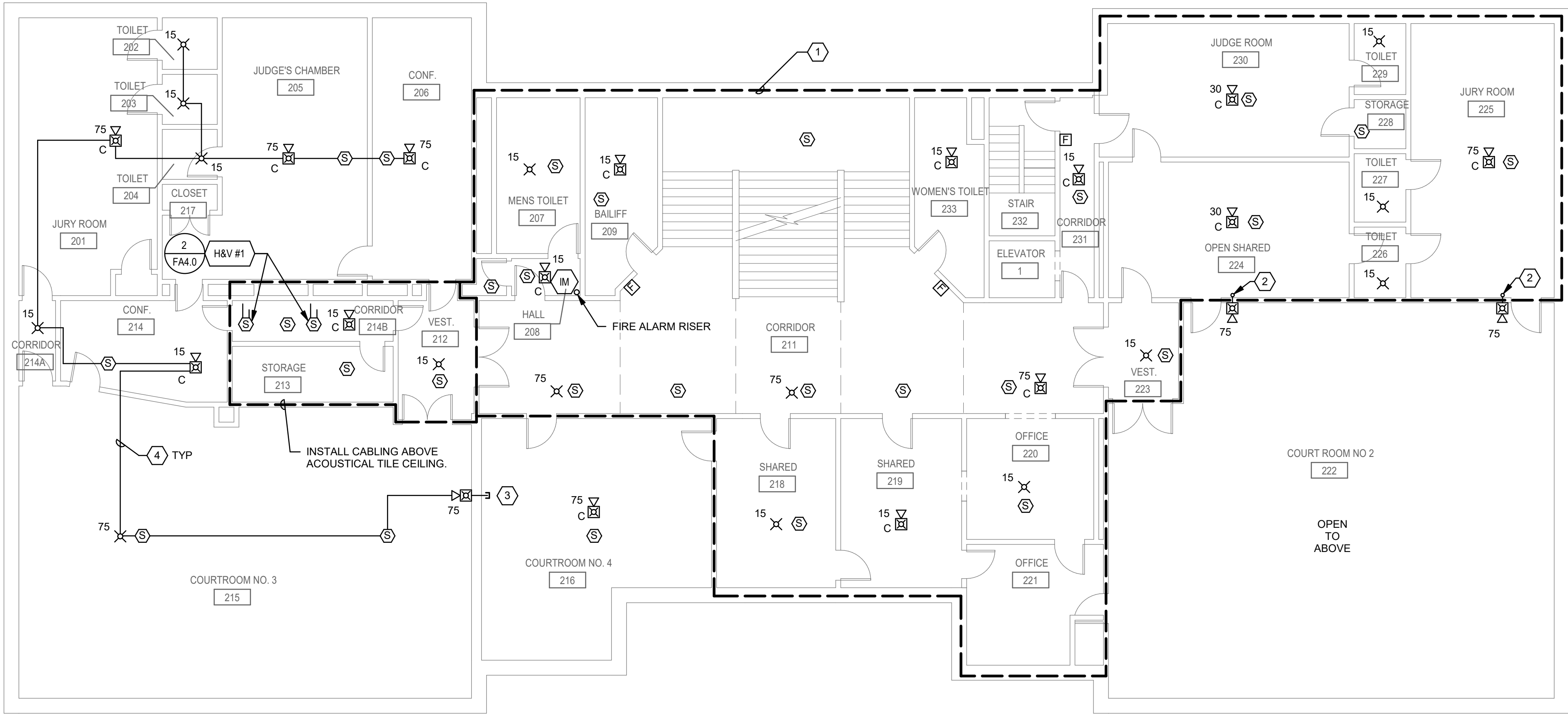
SKAGIT COUNTY
COURTHOUSE FIRE ALARM SYSTEM UPGRADE
205 W KINCAID ST
MOUNT VERNON, WA 98273

SHEET TITLE
COURTHOUSE -
SECOND FLOOR PLAN -
FIRE ALARM

REVISIONS		
100% DD	08/10/22	
100% CD	10/12/22	

DRAWN BY
JBM
CHECKED BY
JJR
JOB NO.
2022-0463
DATE
10/12/2022
SHEET NUMBER

FA2.1



1 SECOND FLOOR PLAN - FIRE ALARM

1/8" = 1'-0"

SHEET KEYNOTES

- 1. SUGGESTED SURFACE RACEWAY ROUTING. COORDINATE EXACT ROUTING AND PENETRATIONS ON SITE.
- 2. PROVIDE QUANTITY OF POWER SUPPLIES REQUIRED FOR COMPLETE SYSTEM OPERATION.
- 3. INSTALL CABLING IN CRAWL SPACE ABOVE CEILING AND/OR ACOUSTICAL TILE CEILINGS.
- 4. PROVIDE 120V CIRCUIT FROM NEAREST AVAILABLE ELECTRICAL PANEL WITH SPARE CAPACITY.



PROJECT : 2022-0463
CONTACT : JAROD MYRICK
100 SW Main Street, Suite 1600
Portland, OR 97204
TEL: 503.382.2266
www.interfaceengineering.com



SKAGIT COUNTY
COURTHOUSE FIRE ALARM SYSTEM UPGRADE
205 W KINCAID ST
MOUNT VERNON, WA 98273

SHEET TITLE
COURTHOUSE - THIRD
FLOOR PLAN - FIRE
ALARM

REVISIONS		
100% DD	08/10/22	
100% CD	10/12/22	

DRAWN BY
JBM

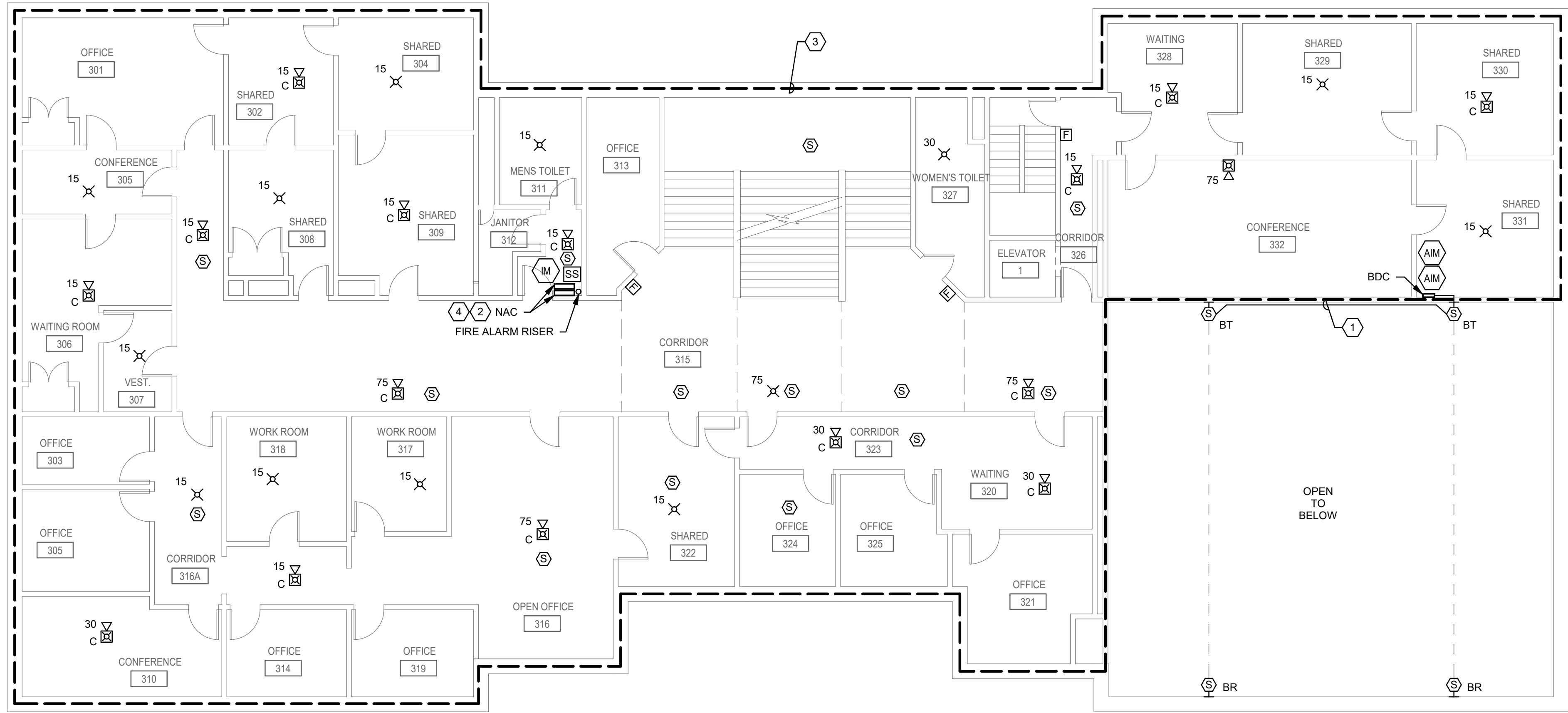
CHECKED BY
JJR

JOB NO.
2022-0463

DATE
10/12/2022

SHEET NUMBER

FA2.2



1 THIRD FLOOR PLAN - FIRE ALARM

0' 4' 8' 16'
1/8" = 1'-0"

SHEET KEYNOTES

1. ABANDONED AREA IS BEING DEMOLISHED IN A SEPARATE PROJECT AND CONVERTED TO 3RD FLOOR ROOF. NO NEW WORK THIS AREA.
2. ROUTE NEW CIRCUIT IN CONDUIT AROUND EXISTING STRUCTURE. PROVIDE WEATHERPROOF CONDUIT AND WIRING.
3. CONDUIT RISER DOWN TO 3RD FLOOR.



**INTERFACE
ENGINEERING**

PROJECT: 2022-0463
CONTACT: JAROD MYRICK

100 SW Main Street, Suite 1600
Portland, OR 97204
TEL: 503.382.2266
www.interfaceengineering.com



SKAGIT COUNTY
COURTHOUSE FIRE ALARM SYSTEM UPGRADE
205 W KINCAID ST
MOUNT VERNON, WA 98273

SHEET TITLE
COURTHOUSE -
FOURTH FLOOR PLAN -
FIRE ALARM

REVISIONS		
100% DD	08/10/22	
100% CD	10/12/22	

DRAWN BY
JBM

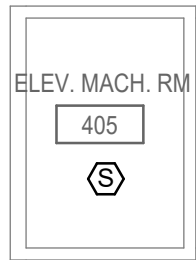
CHECKED BY
JJR

JOB NO.
2022-0463

DATE
10/12/2022

SHEET NUMBER

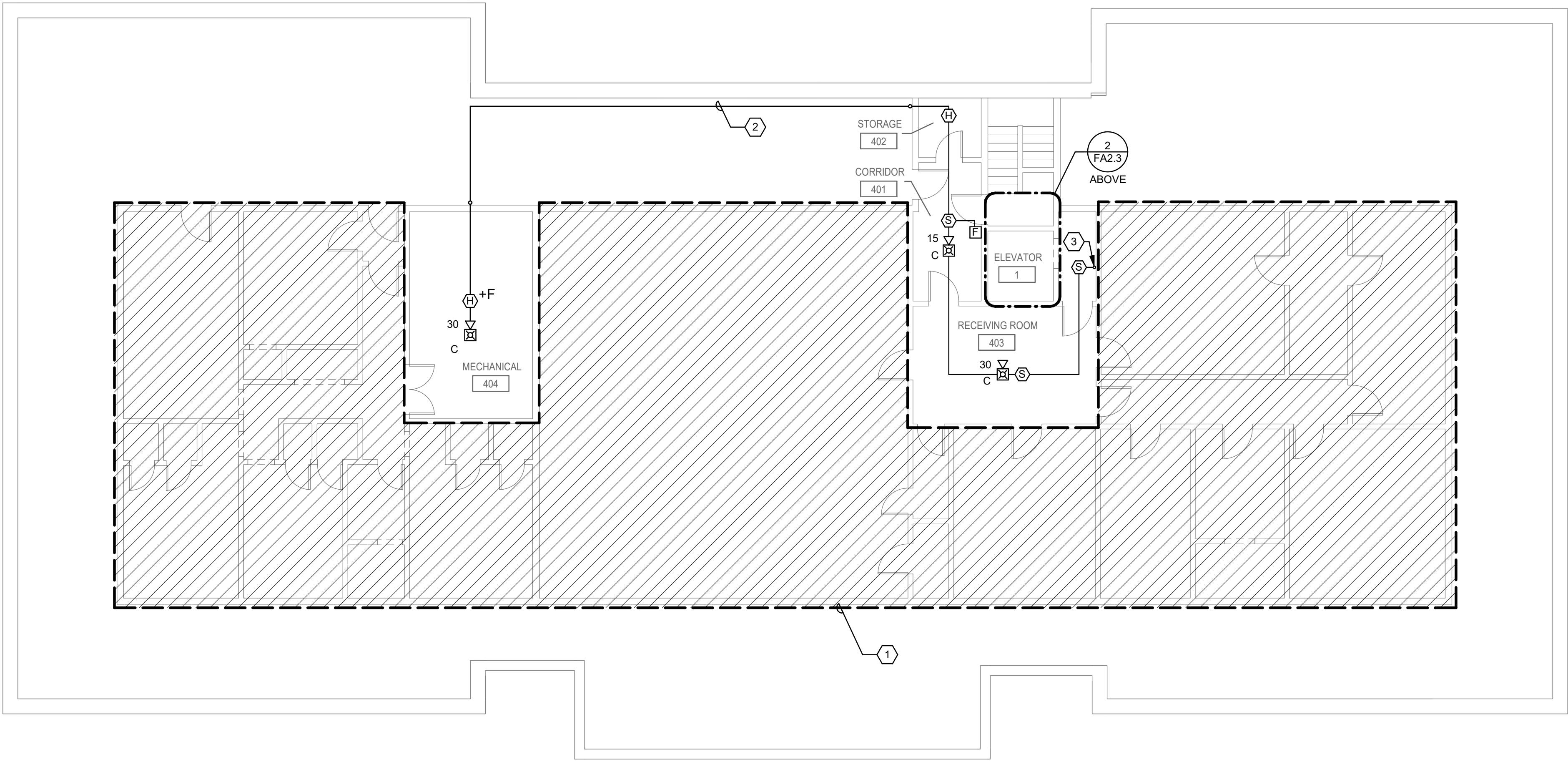
FA2.3



2 ELEV. MACH. RM - FIRE ALARM

0' 4' 8' 16'

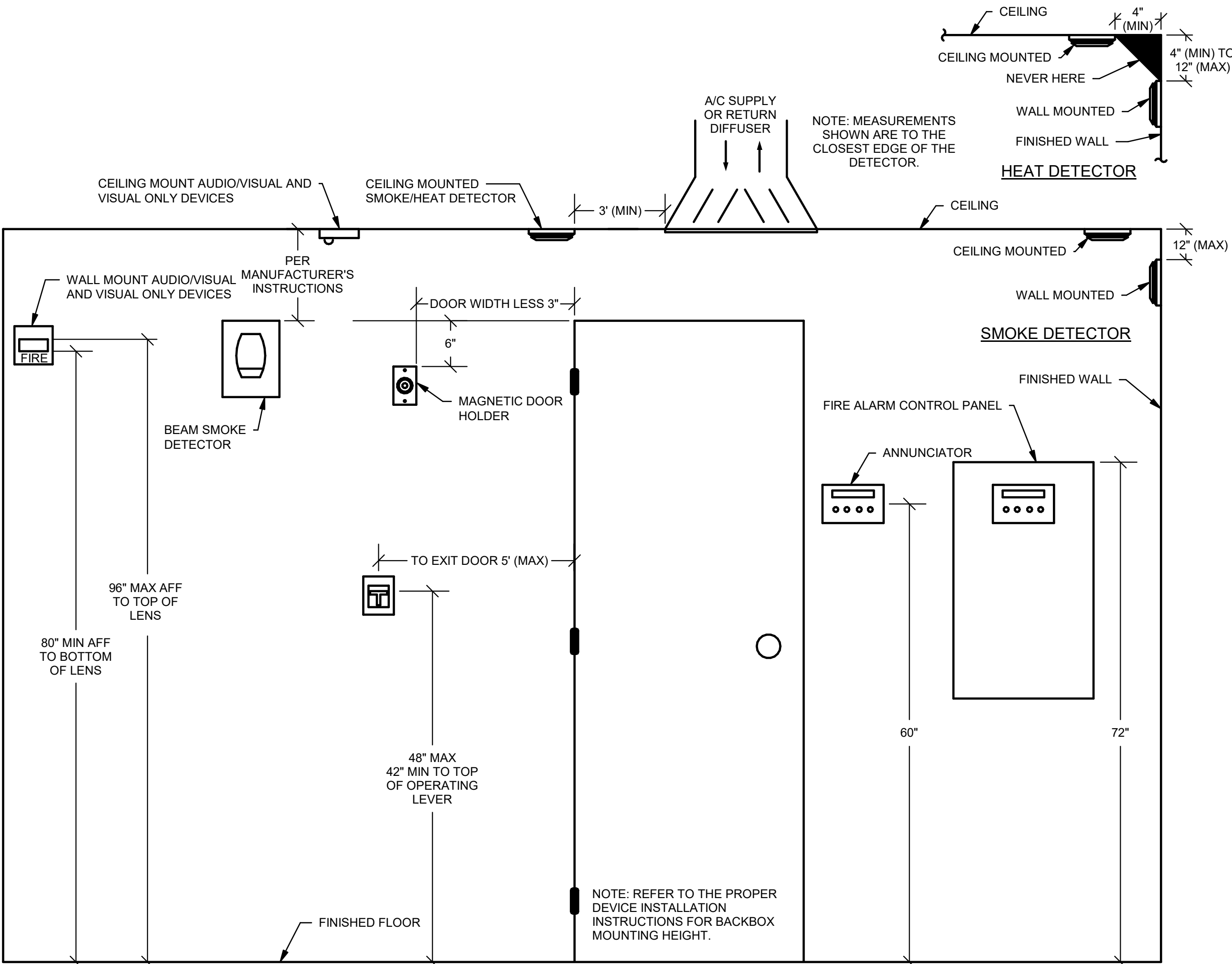
1/8" = 1'-0"



1 FOURTH FLOOR PLAN - FIRE ALARM

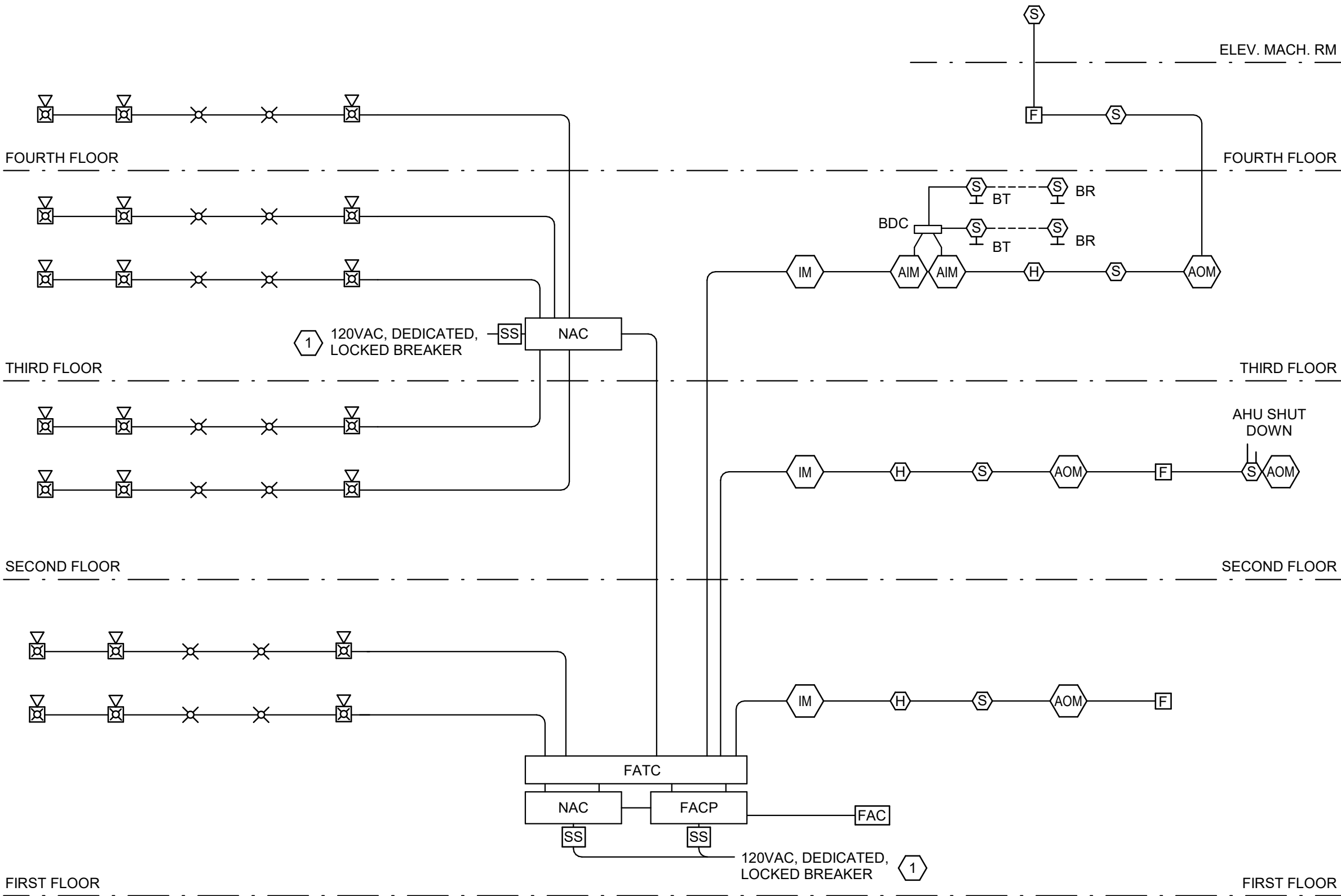
0' 4' 8' 16'

1/8" = 1'-0"



1 DEVICE MOUNTING HEIGHTS

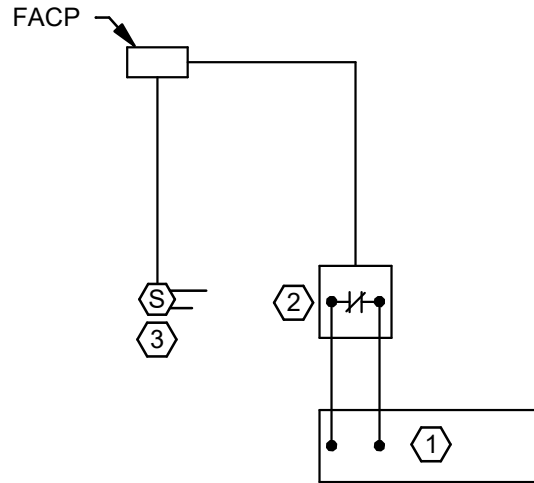
NO SCALE



3 TYPICAL RISER DIAGRAM - FIRE ALARM

NO SCALE

- DETAIL KEYNOTES
- AIR HANDLING UNIT (AHU) STARTER/VFD.
 - FIRE ALARM ADDRESSABLE RELAY. CONNECT TO EMERGENCY STOP INPUT ON FAN CONTROLLER. PROGRAM TO STOP FAN ON ACTIVATION OF ASSOCIATED SMOKE DETECTION. PROVIDE RELAY FOR EACH FAN CONTROLLER.
 - FIRE ALARM ADDRESSABLE DUCT SMOKE DETECTOR.



2 HVAC FAN SHUT DOWN DIAGRAM

NO SCALE

DETAIL GENERAL NOTES

- A. RISER IS DIAGRAMMATICAL AND ONLY SHOWS TYPICAL LAYOUT OF APPLIANCES, DEVICES AND EQUIPMENT. THE CONTRACTOR IS RESPONSIBLE FOR THE DESIGN AND INSTALLATION OF THE SYSTEM IN ACCORDANCE WITH THE SPECIFICATIONS AND ADOPTED CODES AND STANDARDS.

DETAIL KEYNOTES

- 120VAC PRIMARY POWER SOURCE SHALL BE A MECHANICALLY PROTECTED BRANCH CIRCUIT. THE CIRCUIT DISCONNECTING MEANS SHALL HAVE A RED MARKING, AND IDENTIFIED AS "FIRE ALARM CIRCUIT".



REVISIONS		
100% DD	08/10/22	
100% CD	10/12/22	

DRAWN BY	JB
CHECKED BY	JJR
JOB NO.	2022-0463
DATE	10/12/2022
SHEET NUMBER	