



CARLETTI ARCHITECTS P.S.

architecture & planning

116 EAST FIR STREET
SUITE A
MOUNT VERNON, WA. 98273

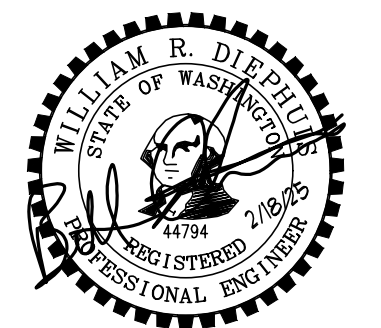
Phone: (360) 424-0394
Fax: (360) 424-5726

K ENGINEERS INC.

208 Third Street
Lynden, WA. 98264
Bus. (360) 354-4757
FAX (360) 354-6794

CONCRETE COMMUNITY CENTER
45821 RAILROAD AVENUE
CONCRETE, WA 98237

CONTACT: ERIC PETERSON
PHONE: 360-416-1176
EMAIL: epeterson@co.skagit.wa.us



2373
PROJECT NUMBER:

REVISIONS:

SHEET TITLE:

ELECTRICAL -

DEMOLITION PLAN

PJC
PROJECT ARCHITECT:

KL
DRAWN BY:

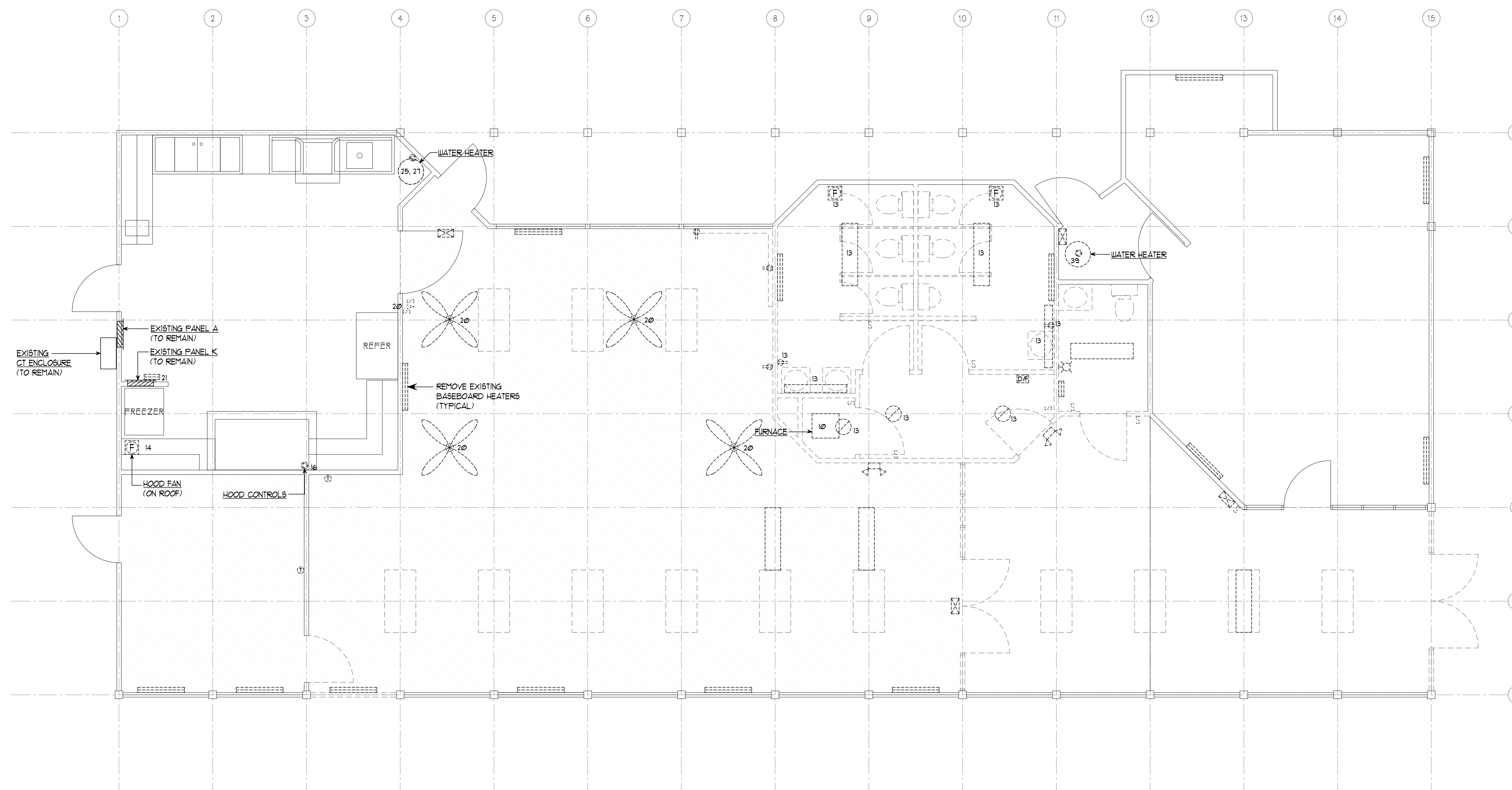
BD
CHECKED BY:

FEBRUARY 18, 2025
DATE

DATA/2373 CONCRETE CC
COMPUTER FILE NAME

E-2.0

COPYRIGHT 2025 CARLETTI ARCHITECTS, P.S.



ELECTRICAL - DEMOLITION PLAN

SCALE: 1/4"=1'-0"



CARLETTI ARCHITECTS P.S.

architecture & planning

116 EAST FIR STREET
SUITE A
MOUNT VERNON, WA. 98273

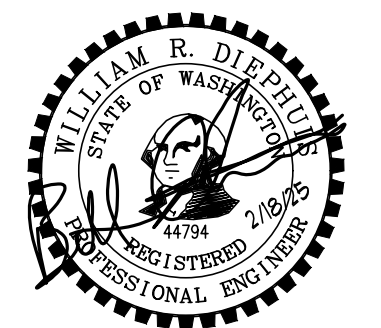
Phone: (360) 424-0394
Fax: (360) 424-5726

K ENGINEERS INC.

208 Third Street
Lynden, WA. 98264
Bus. (360) 354-4757
FAX (360) 354-6794

CONCRETE COMMUNITY CENTER
45821 RAILROAD AVENUE
CONCRETE, WA 98237

CONTACT: ERIC PETERSON
PHONE: 360-416-1176
EMAIL: epeterson@co.skagit.wa.us



2373
PROJECT NUMBER:

REVISIONS:

SHEET TITLE:

ELECTRICAL - MAIN BUILDING
POWER PLAN

PJC
PROJECT ARCHITECT.

KL
DRAWN BY:

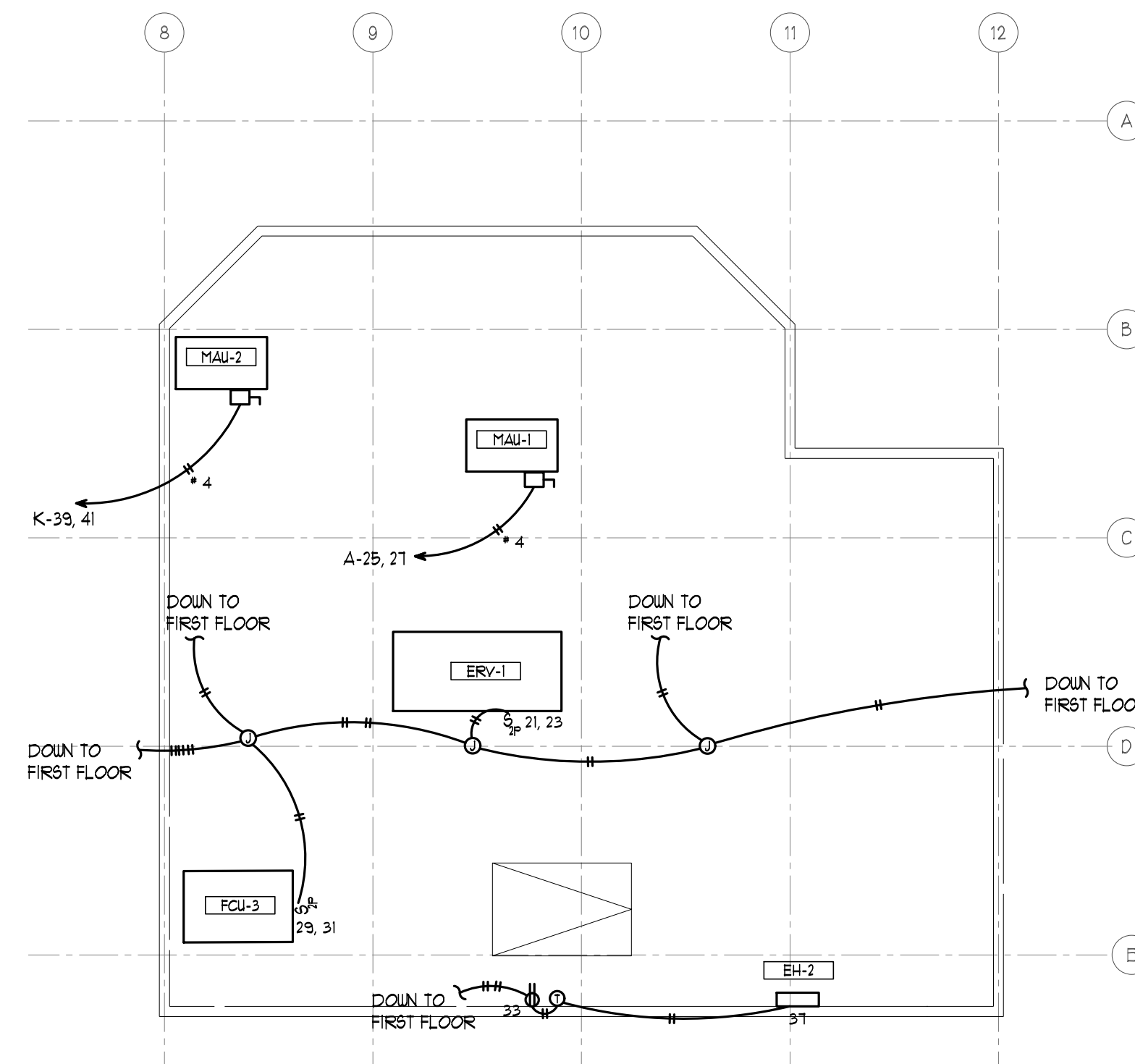
BD
CHECKED BY:

FEBRUARY 18, 2025
DATE

DATA/2373 CONCRETE CC
COMPUTER FILE NAME

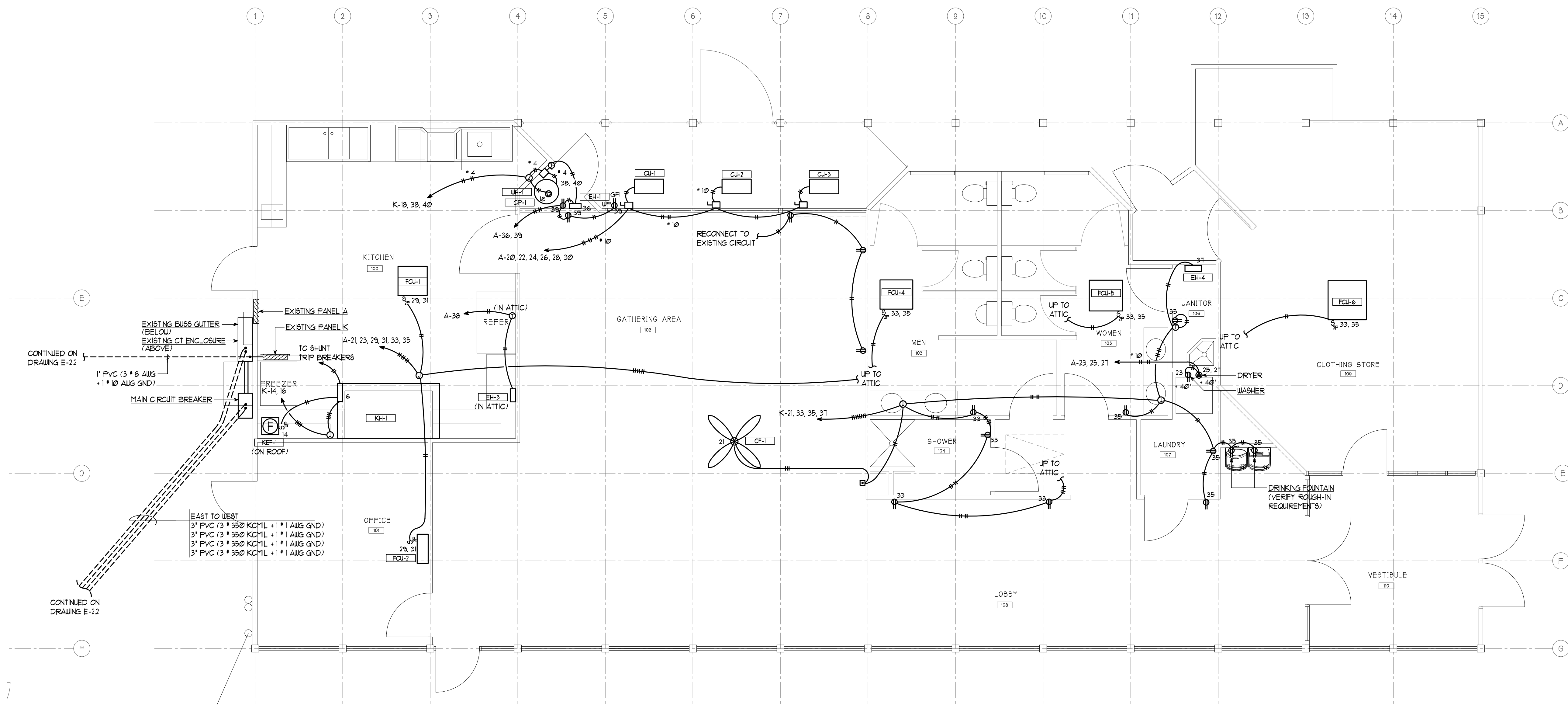
E-2.1

COPYRIGHT 2025 CARLETTI ARCHITECTS, P.S.



ELECTRICAL - ATTIC POWER PLAN

SCALE: 1/4"=1'-0"



ELECTRICAL - MAIN BUILDING POWER PLAN

SCALE: 1/4"=1'-0"





CARLETTI ARCHITECTS P.S.

architecture & planning

116 EAST FIR STREET
SUITE A
MOUNT VERNON, WA. 98273

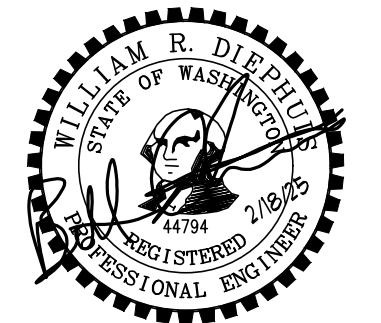
Phone: (360) 424-0394
Fax: (360) 424-5726

K ENGINEERS INC.

208 Third Street
Lynden, WA 98264
Bus. (360) 354-4757
FAX (360) 354-6794

CONCRETE COMMUNITY CENTER
45821 RAILROAD AVENUE
CONCRETE, WA 98237

CONTACT: ERIC PETERSON
PHONE: 360-416-1176
EMAIL: epeterson@co.skagit.wa.us



2373
PROJECT NUMBER:

REVISIONS:

SHEET TITLE:

ELECTRICAL - STORAGE BUILDING

DEMOLITION & POWER PLANS

PJC
PROJECT ARCHITECT:

KL
DRAWN BY:

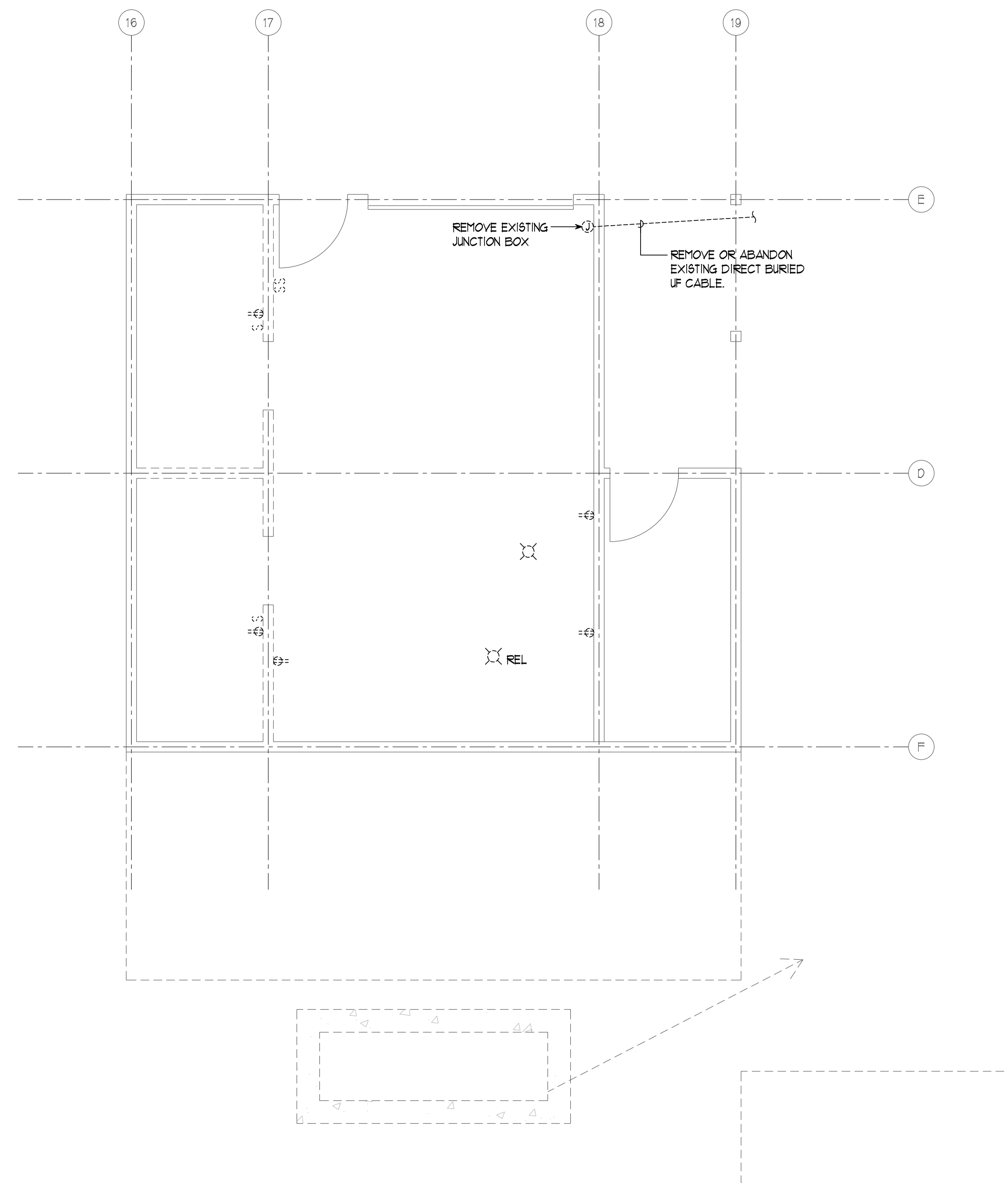
BD
CHECKED BY:

FEBRUARY 18, 2025
DATE

DATA/2373 CONCRETE CC
COMPUTER FILE NAME

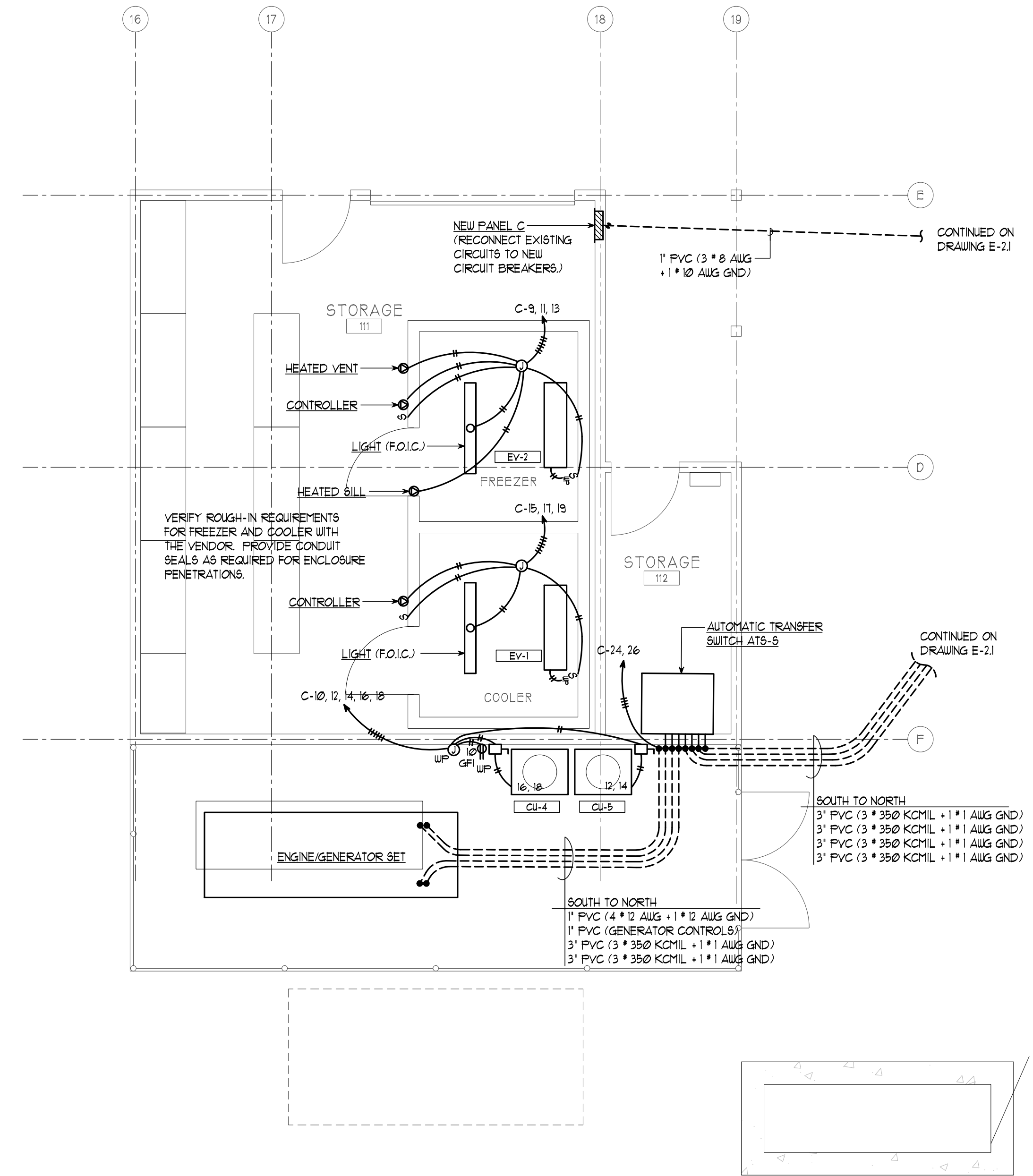
E-2.2

COPYRIGHT 2025 CARLETTI ARCHITECTS, P.S.



ELECTRICAL - STORAGE BUILDING DEMOLITION PLAN

SCALE: 1/4"=1'-0"



ELECTRICAL - STORAGE BUILDING POWER PLAN

SCALE: 1/4"=1'-0"



CARLETTI ARCHITECTS P.S.

architecture & planning

116 EAST FIR STREET
SUITE A
MOUNT VERNON, WA. 98273

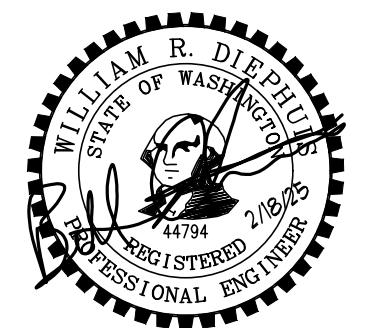
Phone: (360) 424-0394
Fax: (360) 424-5726

K ENGINEERS INC.

209 Third Street
Lynden, WA. 98264
Bus. (360) 354-4757
FAX (360) 354-6794

CONCRETE COMMUNITY CENTER
45821 RAILROAD AVENUE
CONCRETE, WA 98237

CONTACT: ERIC PETERSON
PHONE: 360-416-1176
EMAIL: epeterson@co.skagit.wa.us



2373
PROJECT NUMBER.

REVISIONS:

SHEET TITLE:

ELECTRICAL - MAIN BUILDING

LIGHTING PLAN

PJC
PROJECT ARCHITECT.

KL
DRAWN BY:

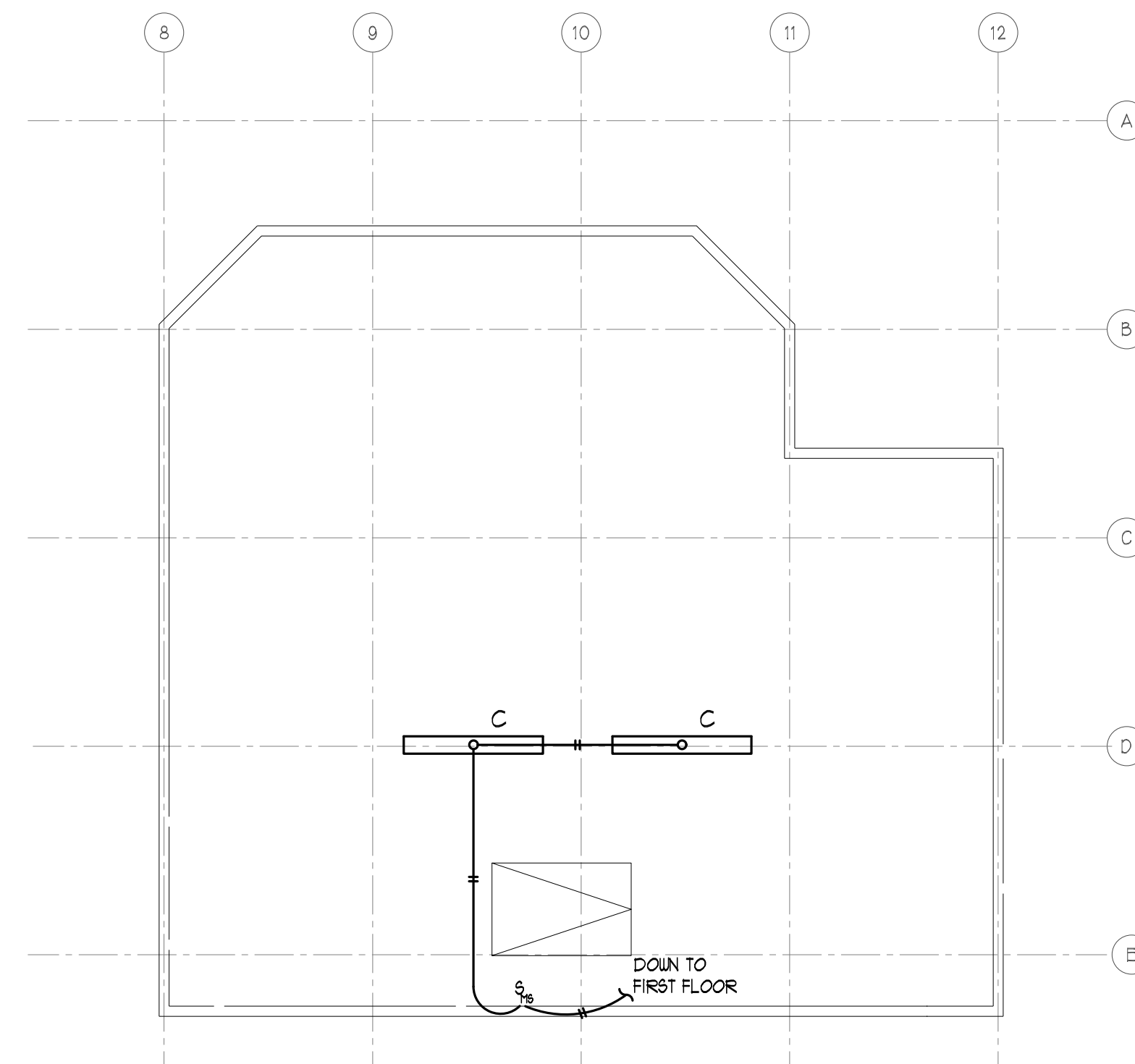
BD
CHECKED BY:

FEBRUARY 18, 2025
DATE

DATA/2373 CONCRETE CC
COMPUTER FILE NAME

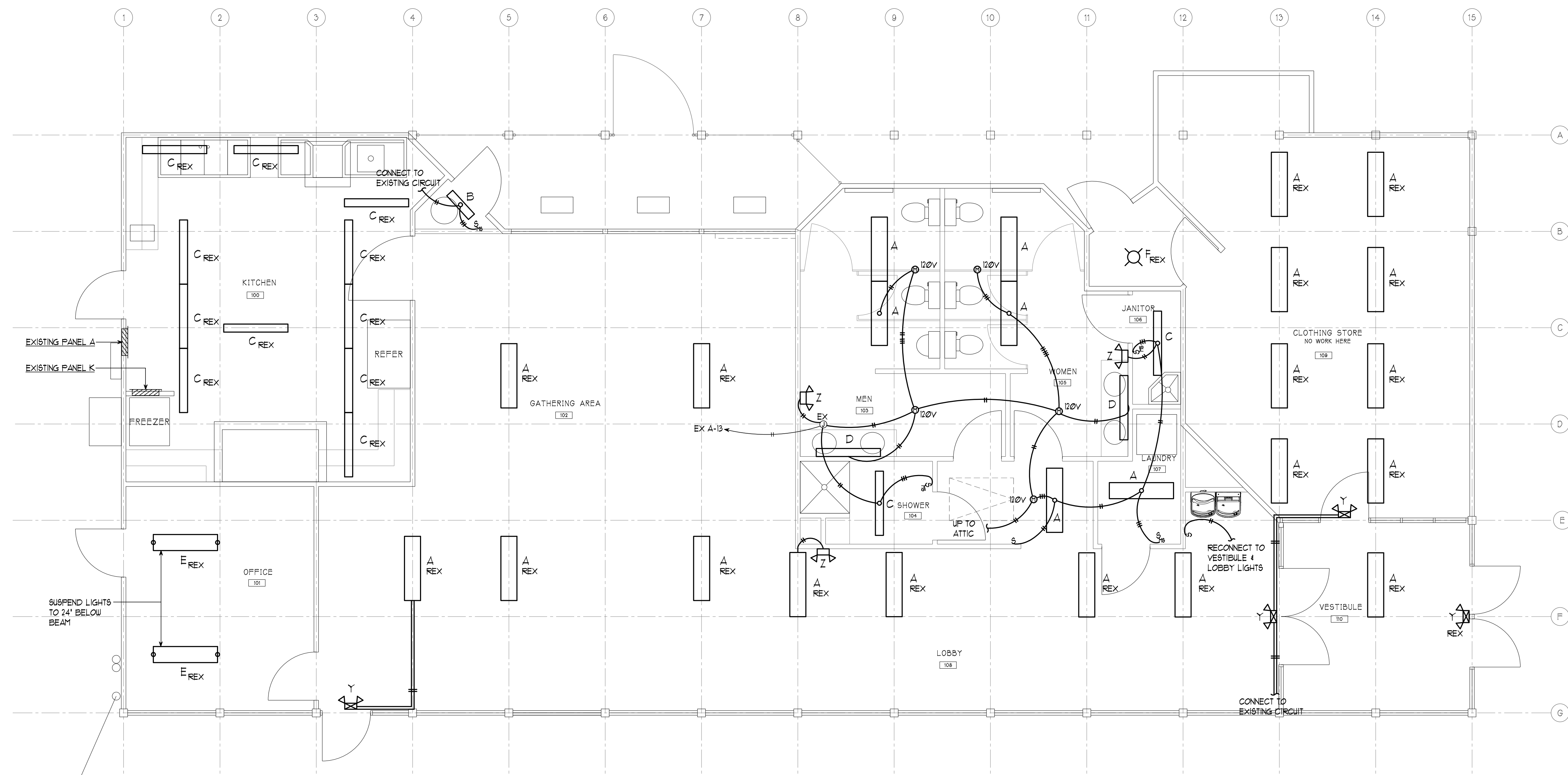
E-3.1

COPYRIGHT 2025 CARLETTI ARCHITECTS, P.S.



ELECTRICAL - ATTIC LIGHTING PLAN

SCALE: 1/4"=1'-0"



ELECTRICAL - MAIN BUILDING LIGHTING PLAN

SCALE: 1/4"=1'-0"





CARLETTI ARCHITECTS P.S.

architecture & planning

116 EAST FIR STREET
SUITE A
MOUNT VERNON, WA. 98273

Phone: (360) 424-0394
Fax: (360) 424-5726

K ENGINEERS INC.

208 Third Street
Lynden, WA. 98264
Bus. (360) 354-4757
FAX (360) 354-6794

CONCRETE COMMUNITY CENTER
45821 RAILROAD AVENUE
CONCRETE, WA 98237

CONTACT: ERIC PETERSON
PHONE: 360-416-1176
EMAIL: epeterson@co.skagit.wa.us



2373
PROJECT NUMBER:

REVISIONS:

SHEET TITLE:

ELECTRICAL - STORAGE BUILDING

LIGHTING PLAN & LIGHTING FIXTURE

SCHEDULE

PJC
PROJECT ARCHITECT.

KL
DRAWN BY:

BD
CHECKED BY:

FEBRUARY 18, 2025
DATE

DATA/2373 CONCRETE CC
COMPUTER FILE NAME

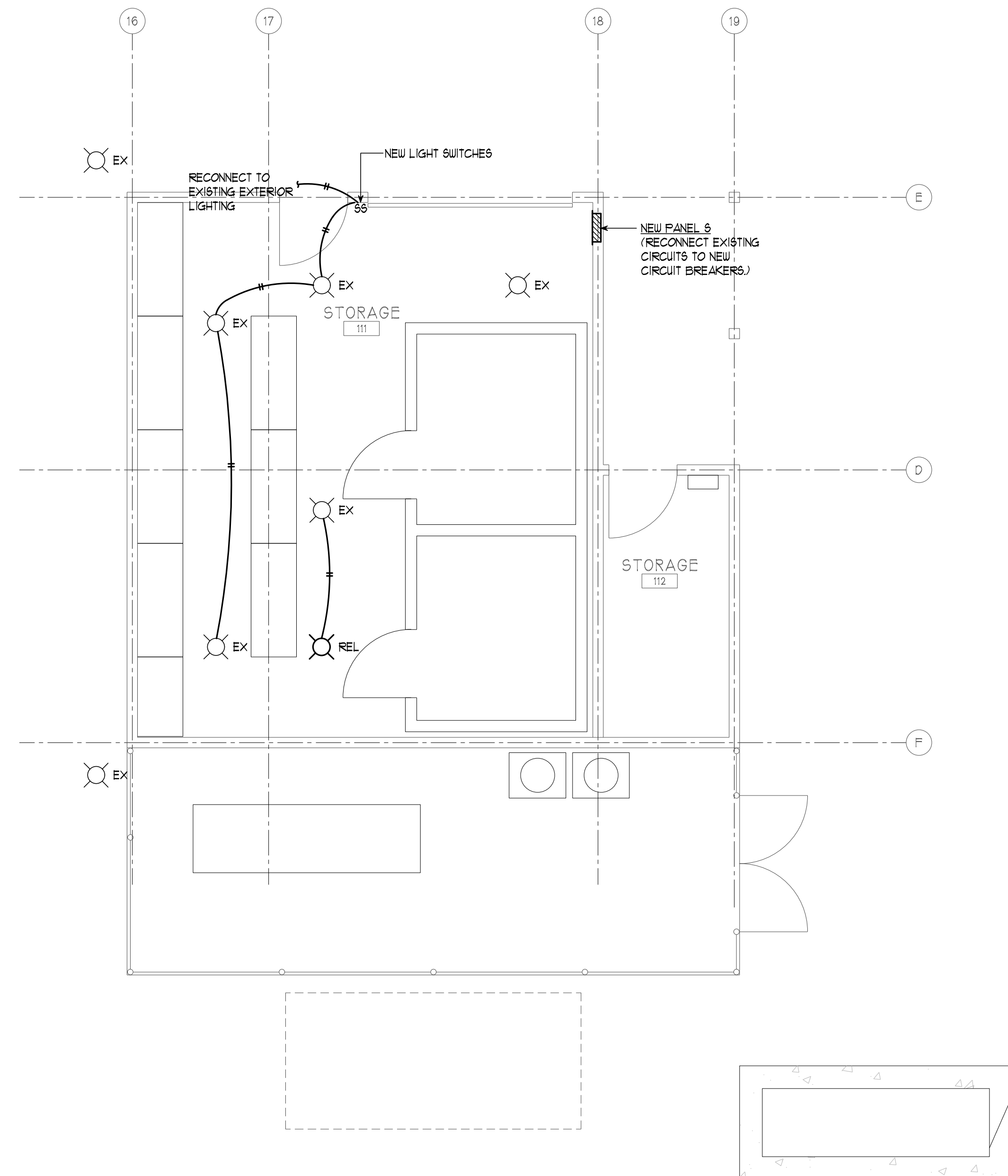
E-3.2

COPYRIGHT 2025 CARLETTI ARCHITECTS, P.S.

LIGHTING FIXTURE SCHEDULE										
TYPE	DESCRIPTION	DIMENSION	MOUNTING	COLOR TEMP.	LUMENS	VOLTS	DIMMING	MANUFACTURER & CAT. NO. (OR APPROVED EQUAL)	LOADS	
									WATT	VA
A	LED VOLUMETRIC WRAPAROUND, DAMP LOCATION, WHITE PAINTED STEEL HOUSING, WITH ACRYLIC DIFFUSE LENS.	4' LONG	SURFACE	3500K	3000	120	NONE	COLUMBIA CRW4-LSCS LITHONIA STL4-30L-LP835 WILLIAMS 39-4-S-L30/835-A ILP-FNW4-30-35-01	25	26
B	LED LENSED STRIP LIGHT, DAMP LOCATION, WIDE DISTRIBUTION, WHITE PAINTED STEEL HOUSING AND ACRYLIC LENS.	2' LONG	SURFACE	3500K	2400	UNV	NONE	COLUMBIA MPS2-35LW-CW-ED DAYBRITE FSS-2-30L-835 LITHONIA ZL1D-L24-2500LM-FST-35K-80CRI-WH METALUX 25NLED-LD5-26SL-LW-L835-CD WILLIAMS 75R-L30-835-DRV	20	21
C	LED LENSED STRIP LIGHT, DAMP LOCATION, WIDE DISTRIBUTION, WHITE PAINTED STEEL HOUSING AND ACRYLIC LENS.	4' LONG	SURFACE	3500K	3100	UNV	NONE	COLUMBIA MPS4-35VW-CW-E DAYBRITE FSS-4-30L-835 LITHONIA ZL1D-L48-3000LM-FST-35K-80CRI-WH METALUX 48NLED-LD5-30SL-LW-L835-CD WILLIAMS 75R-4-L30-835-DRV	25	26
D	LED BATHROOM BRACKET, DAMP LOCATION, WHITE PAINTED STEEL HOUSING WITH ACRYLIC LENS.	4" x 4.5" x 4.5"	WALL	3500K	2200	120	NONE	LITHONIA VL4-20L-EZ1-LP835 LUMENWERX QUAWWHLO-SW-80-550-35-4-D1-1-DRM-W METALUX 48CLED-LD4-20SL-F-L835-CD-1 WILLIAMS SLF-4-L26-835-HA-DRV METALUX 4VT2-LD5-6-L835-CD1-WL	21	22
E	LED VOLUMETRIC WRAPAROUND, DAMP LOCATION, WHITE PAINTED STEEL HOUSING, WITH ACRYLIC DIFFUSE LENS & AIRCRAFT CABLE SUSPENSION KIT.	4' LONG	PENDANT	3500K	3000	120	NONE	COLUMBIA RW4-30VW-FAW-E-CM24SCF3-KIT LITHONIA STL4-30L-LP835-208XVT WILLIAMS 39-4-S-L30/835-A-AC/D24 ILP-FNW4-30-35-01-HB-24-18Y-PAD	25	26
F	LED FLUSH MOUNT ROUND DISC, WHITE COLOR HOUSING WITH POLYCARBONATE LENS.	7" ROUND	CEILING	3000K	820	120	NONE	SATCO NUVO S9331 ASL SAS-7-WHITE-13.5-3000K-D7 ESSENTIAL SMT-3K7-14-9000W DALI5 CFL-EDR09-WH LITON LCMFD7RW30	14	14
G	LED ENCLOSED & GASKETED, WET LOCATIONS, WHITE FIBERGLASS HOUSING, IP68 RATED, WITH GASKETED IMPACT RESISTANT ACRYLIC LENS.	4' LONG	SURFACE	3500K	6000	120	NONE	COLUMBIA LXEM-4-35-HL-E DAYBRITE DWAE70L-835-4 LITHONIA FEM48-6000L-MAFI-MD-35K-80CRI METALUX 4VT2-LD5-6-DR-L835-CD1-WL WILLIAMS 96-4-L62/835-HAFR	60	63
Y	LED COMBINATION LIGHTED EXIT SIGN & EMERGENCY LIGHTING UNIT, SINGLE FACE, UNIVERSAL MOUNT, WHITE WITH GREEN LETTERS, POLYCARBONATE OR THERMOPLASTIC HOUSING, LED LAMPS, SELF CONTAINED NI-CAD	10" x 12"	UNIVERSAL	N/A	N/A	120	NONE	CHLORIDE CLC-N-GW DUAL-LITE EVC-U-G-W1 EMERGH-LITE ELXN400-G-2LED-AD EXITRONIX GVLEDC-51-WH-G2 LITHONIA LHGM-SW-G-G-SD SURE-LITES APC-7-G	5	8
Z	LED EMERGENCY LIGHTING UNIT, WALL MTD., WHITE THERMOPLASTIC HOUSING, COMPACT LOW PROFILE DESIGN, WITH 2 ADJUSTABLE LED HEADS & BUILT-IN DIAGNOSTICS.	11" x 8" x 3.5"	WALL	N/A	700	120	NONE	CHLORIDE CLU2NW DUAL-LITE EV4D1 EMERGH-LITE EL-2RHL-AD EXITRONIX NFT-W-G2 LITHONIA ELM4L-SDRT SURE-LITES SEL60-SD	5	8

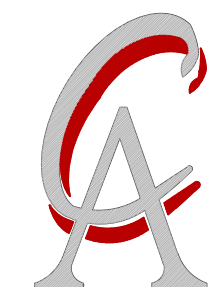
NOTES:

- CONTRACTOR & LIGHTING FIXTURE SUPPLIER SHALL VERIFY DESCRIPTION, MOUNTING REQUIREMENTS, CATALOG NUMBERS, ETC. MATCH. ADVISE ENGINEER OF ANY CONFLICTS OR DISCREPANCIES.
- ALL LED 0-10V DIMMING DRIVERS SHALL BE COMPATIBLE WITH MOTON CONTROLLERS, PHOTO-CONTROLLERS, DIMMER SWITCHES, ETC.



ELECTRICAL - STORAGE BUILDING LIGHTING PLAN

SCALE: 1/4"=1'-0"



CARLETTI ARCHITECTS P.S.

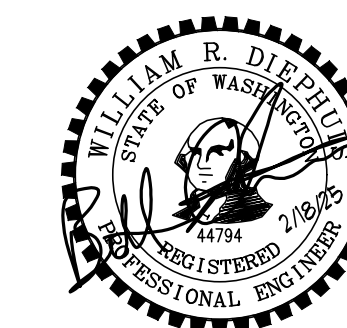
architects & planning
116 EAST FIR STREET
SUITE A
MOUNT VERNON, WA 98273

Phone: (360) 424-0394
Fax: (360) 424-5726

K ENGINEERS INC.
209 Third Street
Lynden, WA 98264
Bus. (360) 354-4757
FAX (360) 354-6794

CONCRETE COMMUNITY CENTER
45821 RAILROAD AVENUE
CONCRETE, WA 98237

CONTACT: ERIC PETERSON
PHONE: 360-416-1176
EMAIL: epeterson@co.skaqit.wa.us



2373
PROJECT NUMBER:

REVISIONS:

SHEET TITLE:

ELECTRICAL - POWER SYSTEM

RISER DIAGRAM & PANEL

SCHEDULES

PJC
PROJECT ARCHITECT.

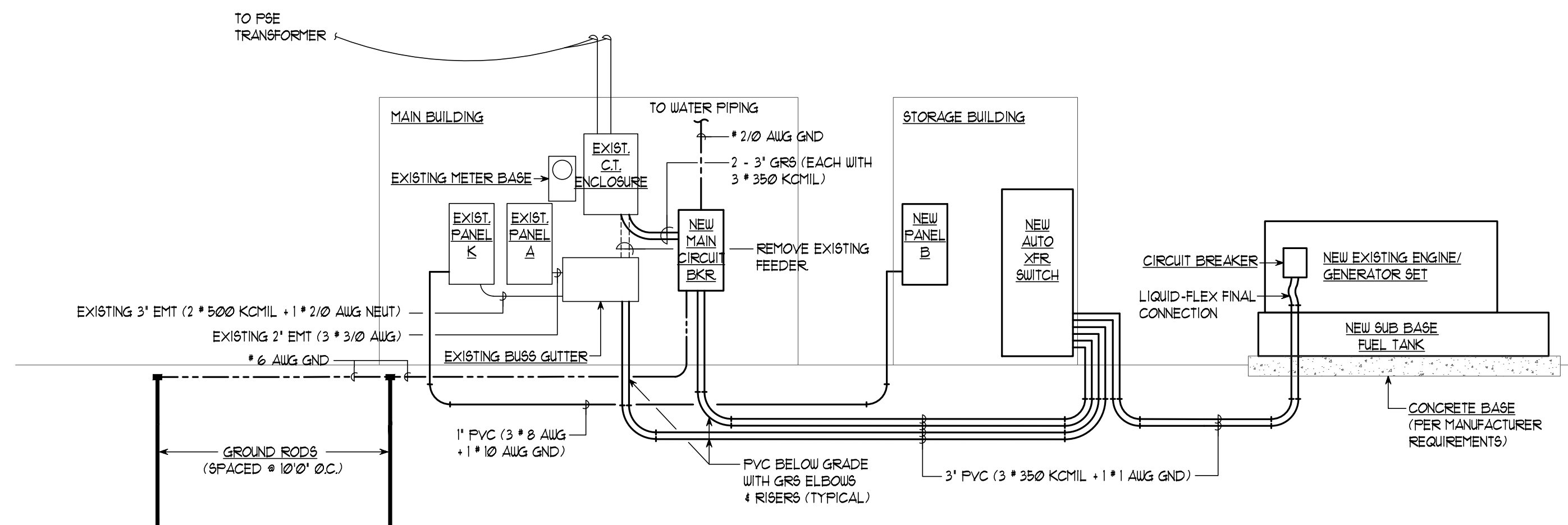
KL
DRAWN BY:

BD
CHECKED BY:

FEBRUARY 18, 2025
DATE

DATA/2373 CONCRETE CC
COMPUTER FILE NAME

E-6.1



POWER SYSTEM RISER DIAGRAM

NO SCALE

Table with columns: EXISTING CURRENT TRANSFORMER ENCLOSURE, SPECIAL PROVISIONS, ELECTRICAL LOAD CALCULATION, CONN. LOAD (VA), DEMAND FACTOR, DEMAND LOAD (VA).

Table with columns: NEW MAIN CIRCUIT BREAKER, SPECIAL PROVISIONS, ELECTRICAL LOAD CALCULATION, CONN. LOAD (VA), DEMAND FACTOR, DEMAND LOAD (VA).

Table with columns: NEW ENGINE-GENERATOR SET, CONTROLS, ELECTRICAL LOAD CALCULATION, CONN. LOAD (VA), DEMAND FACTOR, DEMAND LOAD (VA).

Table with columns: NEW AUTOMATIC TRANSFER SWITCH, METERS (DOOR MOUNTED), ELECTRICAL LOAD CALCULATION, CONN. LOAD (VA), DEMAND FACTOR, DEMAND LOAD (VA).

Table with columns: EXISTING BUS GUTTER, SPECIAL PROVISIONS, ELECTRICAL LOAD CALCULATION, CONN. LOAD (VA), DEMAND FACTOR, DEMAND LOAD (VA).

Table with columns: NEW PANEL C, FEEDER/BRANCH CIRCUIT DEVICES, ELECTRICAL LOAD CALCULATION, CONN. LOAD (VA), DEMAND FACTOR, DEMAND LOAD (VA).

Table with columns: CONN. LOAD (VA), FEEDER/BRANCH CIRCUIT DESCRIPTION, NOTE, BKR AMP/P, CKT NO, BUS (PHASE), CKT NO, BKR AMP/P, FEEDER/BRANCH CIRCUIT DESCRIPTION, NOTE, CONN. LOAD (VA).

Table with columns: EXISTING PANEL A (EXISTING CONDITIONS), VOLTAGE, TYPE, ENCL. MOUNTING, FEEDER/BRANCH CIRCUIT DEVICES, ELECTRICAL LOAD CALCULATION, CONN. LOAD (VA), DEMAND FACTOR, DEMAND LOAD (VA).

Table with columns: CONN. LOAD (VA), FEEDER/BRANCH CIRCUIT DESCRIPTION, NOTE, BKR AMP/P, CKT NO, BUS (PHASE), CKT NO, BKR AMP/P, FEEDER/BRANCH CIRCUIT DESCRIPTION, NOTE, CONN. LOAD (VA).

Table with columns: EXISTING PANEL A (NEW WORK), VOLTAGE, TYPE, ENCL. MOUNTING, FEEDER/BRANCH CIRCUIT DEVICES, ELECTRICAL LOAD CALCULATION, CONN. LOAD (VA), DEMAND FACTOR, DEMAND LOAD (VA).

Table with columns: CONN. LOAD (VA), FEEDER/BRANCH CIRCUIT DESCRIPTION, NOTE, BKR AMP/P, CKT NO, BUS (PHASE), CKT NO, BKR AMP/P, FEEDER/BRANCH CIRCUIT DESCRIPTION, NOTE, CONN. LOAD (VA).

- NOTES: (1) EXISTING CIRCUIT MOVED TO PANEL C AND CIRCUIT BREAKER MADE SPARE. (2) EXISTING CIRCUIT REMOVED AND CIRCUIT BREAKER MADE SPARE. (3) MODIFIED EXISTING CIRCUIT ON EXISTING CIRCUIT BREAKER. (4) NEW CIRCUIT & CIRCUIT BREAKER TO REPLACE EXISTING. (5) NEW CIRCUIT CONNECTED TO EXISTING CIRCUIT BREAKER. (6) ALL OTHER CIRCUITS ARE EXISTING TO REMAIN.

Table with columns: EXISTING PANEL K (EXISTING CONDITIONS), VOLTAGE, TYPE, ENCL. MOUNTING, FEEDER/BRANCH CIRCUIT DEVICES, ELECTRICAL LOAD CALCULATION, CONN. LOAD (VA), DEMAND FACTOR, DEMAND LOAD (VA).

Table with columns: CONN. LOAD (VA), FEEDER/BRANCH CIRCUIT DESCRIPTION, NOTE, BKR AMP/P, CKT NO, BUS (PHASE), CKT NO, BKR AMP/P, FEEDER/BRANCH CIRCUIT DESCRIPTION, NOTE, CONN. LOAD (VA).

Table with columns: EXISTING PANEL K (NEW WORK), VOLTAGE, TYPE, ENCL. MOUNTING, FEEDER/BRANCH CIRCUIT DEVICES, ELECTRICAL LOAD CALCULATION, CONN. LOAD (VA), DEMAND FACTOR, DEMAND LOAD (VA).

Table with columns: CONN. LOAD (VA), FEEDER/BRANCH CIRCUIT DESCRIPTION, NOTE, BKR AMP/P, CKT NO, BUS (PHASE), CKT NO, BKR AMP/P, FEEDER/BRANCH CIRCUIT DESCRIPTION, NOTE, CONN. LOAD (VA).

- NOTES: (1) EXISTING CIRCUIT REMOVED AND CIRCUIT BREAKER MADE SPARE. (2) MODIFIED EXISTING CIRCUIT ON EXISTING CIRCUIT BREAKER. (3) NEW CIRCUIT & CIRCUIT BREAKER IN EXISTING SPACE. (4) NEW CIRCUIT CONNECTED TO EXISTING SPARE CIRCUIT BREAKER. (5) ALL OTHER CIRCUITS ARE EXISTING TO REMAIN.