


# Skagit County's Water Quality Monitoring Program – a state perspective

**Skagit County Public Meeting 12-6-07**



**Sally Lawrence, TMDL Lead  
Washington Department of Ecology  
Northwest Regional Office, Bellevue**

# Overview

- ◆ Ecology's role in protecting waters of the state
  - ◆ Purpose and design of the water quality monitoring program
  - ◆ What does it tell us?
  - ◆ Next steps
- 

# Ecology's role in protecting water quality

- ◆ Federal Clean Water Act delegates to state:
  - Administer NPDES program (point sources)
  - Establish water quality standards
  - TMDLs – program with local govt, orgs to clean up point & nonpoint sources



# Skagit's WQ Monitoring Program

- ◆ Designed to answer the question, "Are current land uses (Ag & others) doing harm to the water?"
- ◆ Fair – uses scientific approach instead of assuming problems everywhere
- ◆ Local review & Ecology review
- ◆ The data are "credible"

# Washington State's Credible Data Policy

- ◆ RCW 90.48-585 (2004)
  - Follow QA/QC during sampling & analysis
  - Samples are representative of conditions at time of sampling
  - Number of samples adequate
  - Methods & protocols – scientifically acceptable

# Dissolved Oxygen in Skagit Area Rivers, Streams

(partial list based on Feb 2007  
Skagit Public Works Annual Water Quality Monitoring Report)

## Meet Standards

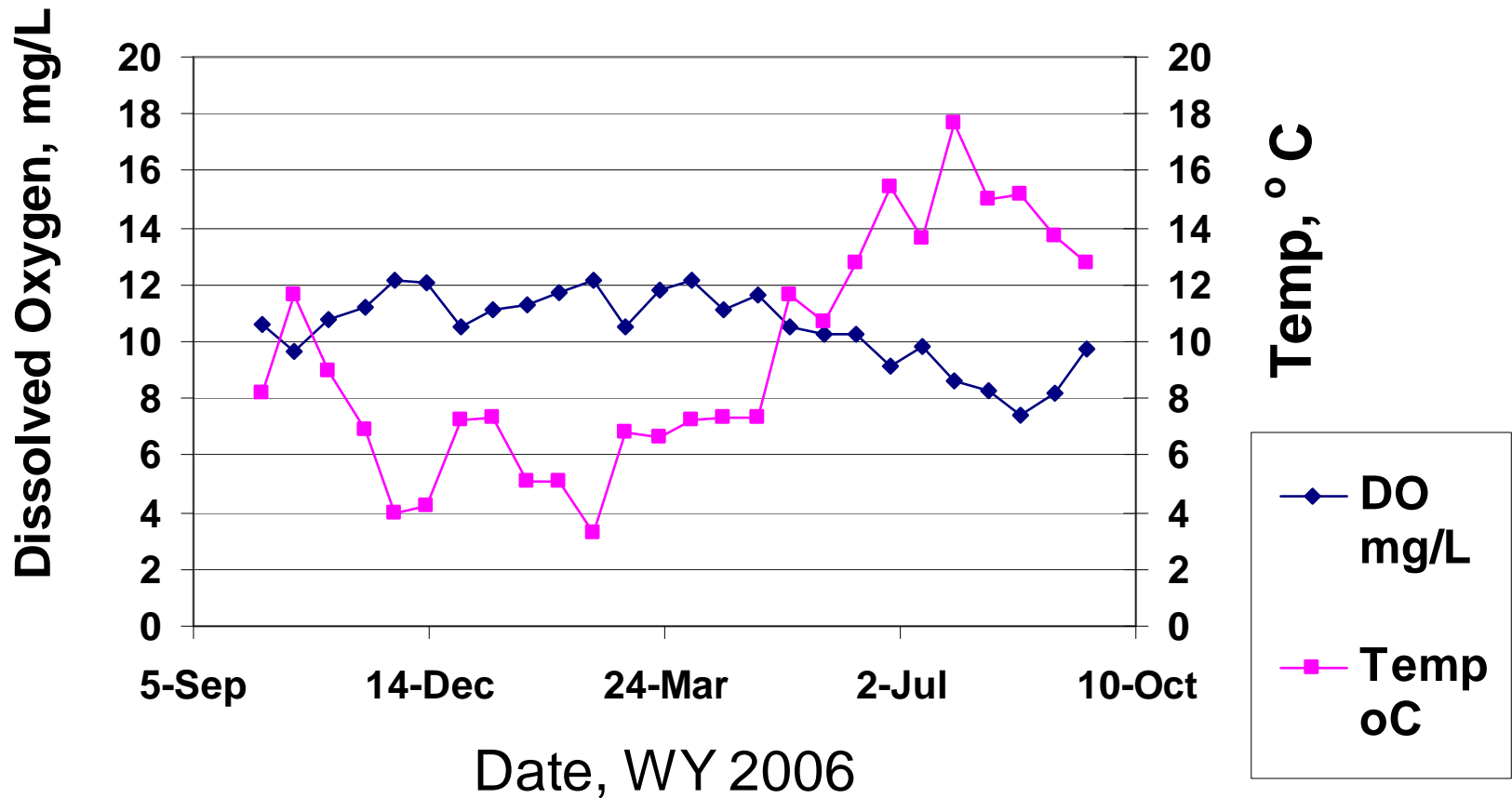
- ◆ All mainstem, North Fork & South Fork
- ◆ Hansen Creek
- ◆ Wiseman, Coal
- ◆ Friday Creek at Prairie Rd
- ◆ Samish R –Thos Rd
- ◆ Lake, Fisher creeks
- ◆ Thomas Crk at F & S Grade Rd

## Do Not Meet Standards

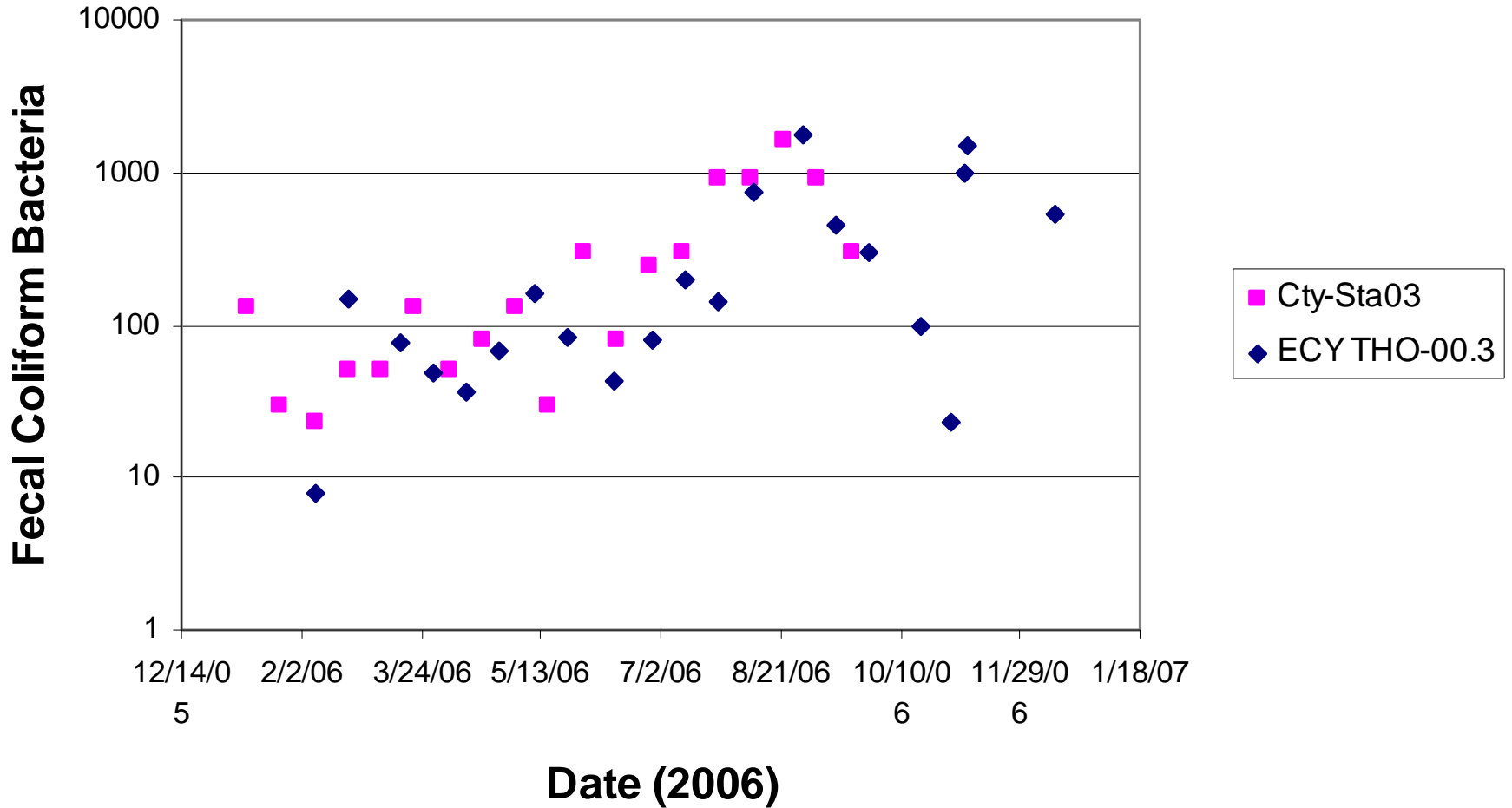
- ◆ Thomas Creek at Hwy 99
- ◆ Samish River – Hwy 9
- ◆ Nookachamps Creek
- ◆ Mannser Creek
- ◆ Carpenter Creek/Hill Ditch

# Dissolved Oxygen Levels Are Reduced When Streams Are Warm

## Hansen Creek at Hoehn Rd



## 2-2. Comparison of Skagit County 03 and ECY THO-00.3 (County used MPN and ECY used MF)





# What Do the Data Tell Us?

## Next Steps

- ◆ Some sampling locations not in compliance with state standards
- ◆ Zero trend (no change) is not a “pass” if standards not met
- ◆ Adaptive management requires County follow-up:
  - Review land uses & flow
    - Contact with landowners
    - Education and technical assistance
    - Most people want to be good stewards



Contact information:  
Sally Lawrence, Ecology  
[slaw461@ecy.wa.gov](mailto:slaw461@ecy.wa.gov) (4250 649-7036)